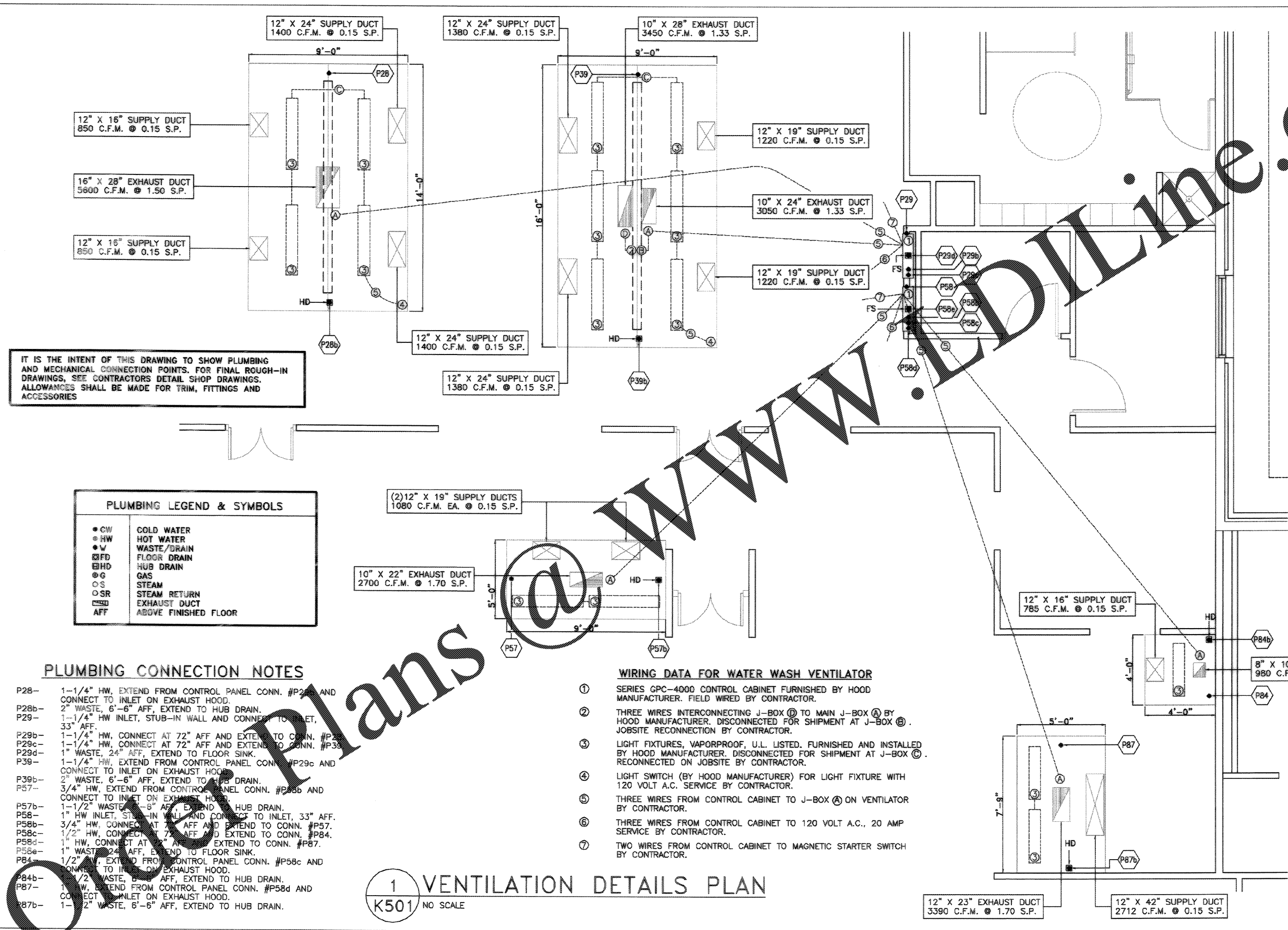


www.onlinedrawings.com



IT IS THE INTENT OF THIS DRAWING TO SHOW PLUMBING AND MECHANICAL CONNECTION POINTS. FOR FINAL ROUGH-IN DRAWINGS, SEE CONTRACTORS DETAIL SHOP DRAWINGS. ALLOWANCES SHALL BE MADE FOR TRIM, FITTINGS AND ACCESSORIES

PLUMBING LEGEND & SYMBOLS	
● CW	COLD WATER
● HW	HOT WATER
● W	WASTE/DRAIN
⊠ FD	FLOOR DRAIN
⊠ HD	HUB DRAIN
⊠ G	GAS
⊠ S	STEAM
⊠ SR	STEAM RETURN
⊠ ED	EXHAUST DUCT
⊠ AFF	ABOVE FINISHED FLOOR

**PLUMBING CONNECTION NOTES**

- P28- 1-1/4" HW, EXTEND FROM CONTROL PANEL CONN. #P28 AND CONNECT TO INLET ON EXHAUST HOOD.
- P28b- 2" WASTE, 6'-6" AFF, EXTEND TO HUB DRAIN.
- P29- 1-1/4" HW INLET, STUB-IN WALL AND CONNECT TO INLET, 33" AFF.
- P29b- 1-1/4" HW, CONNECT AT 72" AFF AND EXTEND TO CONN. #P29c.
- P29c- 1-1/4" HW, CONNECT AT 72" AFF AND EXTEND TO CONN. #P39.
- P29d- 1" WASTE, 24" AFF, EXTEND TO FLOOR SINK.
- P39- 1-1/4" HW, EXTEND FROM CONTROL PANEL CONN. #P29c AND CONNECT TO INLET ON EXHAUST HOOD.
- P39b- 2" WASTE, 6'-6" AFF, EXTEND TO HUB DRAIN.
- P57- 3/4" HW, EXTEND FROM CONTROL PANEL CONN. #P58b AND CONNECT TO INLET ON EXHAUST HOOD.
- P57b- 1-1/2" WASTE, 6'-6" AFF, EXTEND TO HUB DRAIN.
- P58- 1" HW INLET, STUB-IN WALL AND CONNECT TO INLET, 33" AFF.
- P58b- 3/4" HW, CONNECT AT 72" AFF AND EXTEND TO CONN. #P84.
- P58c- 1/2" HW, CONNECT AT 72" AFF AND EXTEND TO CONN. #P84.
- P58d- 1" HW, CONNECT AT 72" AFF AND EXTEND TO CONN. #P87.
- P58e- 1" WASTE, 24" AFF, EXTEND TO FLOOR SINK.
- P84- 1/2" HW, EXTEND FROM CONTROL PANEL CONN. #P58c AND CONNECT TO INLET ON EXHAUST HOOD.
- P84b- 1-1/2" WASTE, 6'-6" AFF, EXTEND TO HUB DRAIN.
- P87- 1" HW, EXTEND FROM CONTROL PANEL CONN. #P58d AND CONNECT TO INLET ON EXHAUST HOOD.
- P87b- 1-1/2" WASTE, 6'-6" AFF, EXTEND TO HUB DRAIN.

- WIRING DATA FOR WATER WASH VENTILATOR**
- ① SERIES GPC-4000 CONTROL CABINET FURNISHED BY HOOD MANUFACTURER. FIELD WIRED BY CONTRACTOR.
  - ② THREE WIRES INTERCONNECTING J-BOX ① TO MAIN J-BOX ② BY HOOD MANUFACTURER. DISCONNECTED FOR SHIPMENT AT J-BOX ②. JOBSITE RECONNECTION BY CONTRACTOR.
  - ③ LIGHT FIXTURES, VAPORPROOF, U.L. LISTED. FURNISHED AND INSTALLED BY HOOD MANUFACTURER. DISCONNECTED FOR SHIPMENT AT J-BOX ③. RECONNECTED ON JOBSITE BY CONTRACTOR.
  - ④ LIGHT SWITCH (BY HOOD MANUFACTURER) FOR LIGHT FIXTURE WITH 120 VOLT A.C. SERVICE BY CONTRACTOR.
  - ⑤ THREE WIRES FROM CONTROL CABINET TO J-BOX ④ ON VENTILATOR BY CONTRACTOR.
  - ⑥ THREE WIRES FROM CONTROL CABINET TO 120 VOLT A.C., 20 AMP SERVICE BY CONTRACTOR.
  - ⑦ TWO WIRES FROM CONTROL CABINET TO MAGNETIC STARTER SWITCH BY CONTRACTOR.

1 VENTILATION DETAILS PLAN  
K501 NO SCALE

Glick/Boehm, & Associates, Inc. 247 Meeting Street, Suite 200 Charleston, S.C. 29403 (803) 777-6377				
DRAWING REVISIONS Description 1 1/2" WASTE, 6'-6" AFF, EXTEND TO HUB DRAIN	Date 11/11	Drawn By J. Miller	Checked By J. Miller	Title VENTILATION DETAILS
CHARLESTON AIR FORCE BASE DINING FACILITY VENTILATION DETAILS		APPROVED: <i>[Signature]</i> ETD FOR COMMANDER, WAFB		
Naval Facilities Engineering Command Southern Division Charleston, South Carolina		RECORD DRAWING DATE 7/27/04 CODE LB. NO. 80091 DRAWING SIZE: 11" x 17" D SPEC. NO. 86-98-0939 CONSTR. CONTR. NO. N62467-98-C-0939 NAVFAC DRAWING NO. 5357935 SHEET 110 OF 194		
K501		K501		