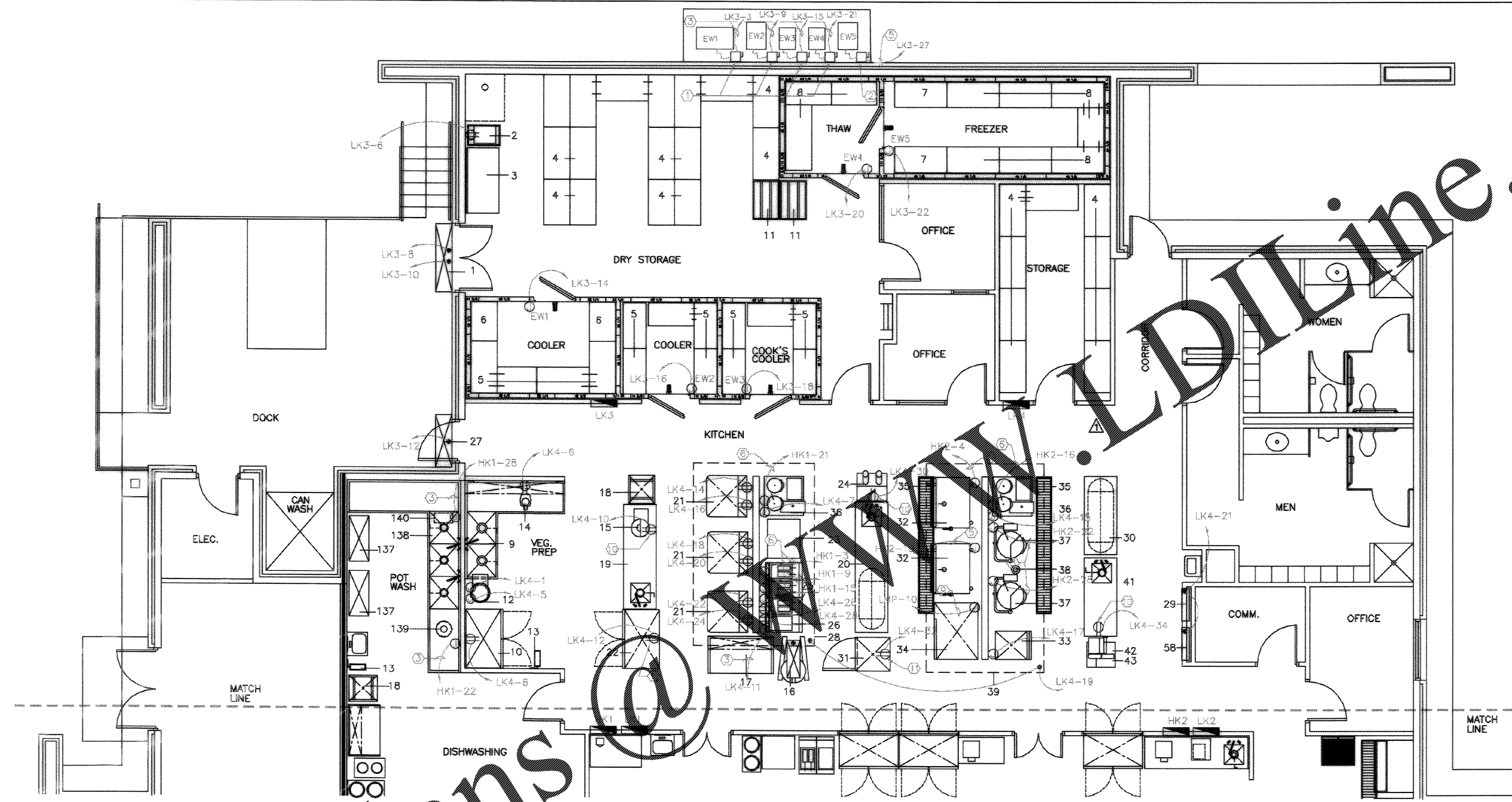


Order Plans



KITCHEN AND SERVERY ELECTRICAL PLAN

1/4" = 1'-0"

KEY NOTE (APPLIES TO E402 AND E403 ONLY)

- | | |
|-----------------------------------|---|
| ① DISCONNECT SWITCH, 30/3/3R/20AF | ⑩ 3-#4/0, 1-#4GND, 2 1/2" C |
| ② DISCONNECT SWITCH, 60/3/3R/40AF | ⑪ MOUNT RECEPTACLE 8" A.F.F. ON 2 RIGID STEEL CONDUITS |
| ③ 1-#2, 1-#10GND, 1 1/2" C | ⑫ RECEPTACLE ON S.D. CORD FROM CEILING @ 80" A.F.F. |
| ④ 1-#10, 1-#10GND, 3/4" C | ⑬ RECEPTACLE, 30A, 208V, 1Ø |
| ⑤ 3-#10, 1-#10GND, 3/4" C | ⑭ RECEPTACLE, 30A, 480V, 3Ø |
| ⑥ 3-#8, 1-#10GND, 3/4" C | ⑮ RECEPTACLE, 40A, 480V, 3Ø |
| ⑦ 3-#8, 1-#8GND, 1" C | ⑯ MOUNT RECEPTACLE 10" A.F.F. ON 2 RIGID STEEL CONDUITS |
| ⑧ 3-#2, 1-#8GND, 1 1/4" C | |



RECORD DRAWING DATE	9/27/04
CODE I.D. NO.	80851
DRAWING SIZE	D
SPEC. NO.	06-88-0938
CONSTR. CONTR. NO.	N62467-98-C-0939
NAVFAC DRAWING NO.	3358004
SHEET	119 OF 184

E-402

DESIGN/REVISIONS	DATE	BY	CHKD BY
1 AS-BUILT DRAWING CONNECTIONS	10/14/04	ALLEN	ALLEN

CHARLESTON AIR FORCE BASE	CHARLESTON, SOUTH CAROLINA
DINING FACILITY	
KITCHEN AND SERVERY ELECTRICAL PLAN	
APPROVED	DATE
RD/MS/PL	10/14/04

Naval Facilities Engineering Command
Southern Division
Charleston, South Carolina