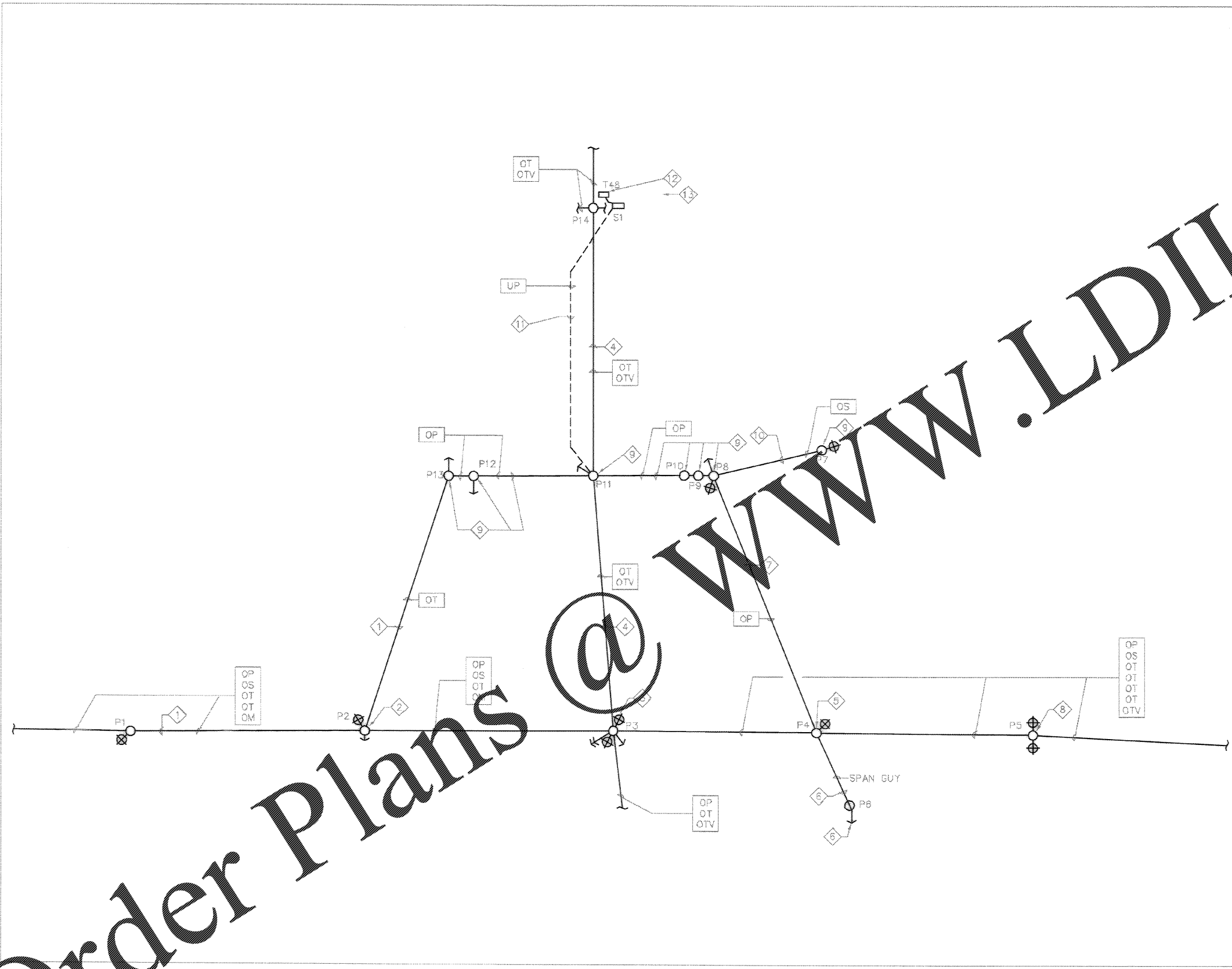


Order Plans



SITE DEMOLITION PLAN  
SCALE: 1" = 40'

KEYED DEMOLITION NOTES (THIS SHEET ONLY)

- 1 ABANDONED OVERHEAD TELEPHONE CIRCUIT FROM P1 TO P2 AND FROM P2 TO P13 TO BE REMOVED BY GOVERNMENT PRIOR TO THE START OF CONSTRUCTION.
- 2 REMOVE FLOODLIGHT AND REMOVE DOWNWIRE AND ANCHOR ON P2.
- 3 REMOVE FLOODLIGHT AND REMOVE 3 DOWNWIRE AND 3 ANCHORS ON P3. STREET LIGHT IS TO REMAIN.
- 4 OVERHEAD TELEPHONE AND OVERHEAD TELEVISION CIRCUITS FROM P3 TO P11 AND FROM P11 TO P14 TO BE REMOVED BY THE GOVERNMENT PRIOR TO THE START OF CONSTRUCTION.
- 5 REMOVE FLOODLIGHT ON P4. REMOVE POLE IN ITS ENTIRETY AFTER NEW POLE P4 IS IN PLACE.
- 6 REMOVE SPAN GUY FROM P4 TO P5. REMOVE CLASS 3, 30' STUB POLE P6. REMOVE DOWNWIRE AND ANCHOR.
- 7 REMOVE OVERHEAD PRIMARY FROM P4 TO P8.
- 8 REMOVE FLOODLIGHT ON P5. STREETLIGHT IS TO REMAIN.
- 9 REMOVE POLES P7, P8, P9, P10, P11, P12 AND P13 IN THEIR ENTIRETY, INCLUDING DOWN GUYS AND ANCHORS. REMOVE OVERHEAD PRIMARY FROM P8 TO P9, FROM P9 TO P10, FROM P10 TO P11, FROM P11 TO P12 AND FROM P12 TO P13.
- 10 REMOVE OVERHEAD SECONDARY FROM P7 TO P8.
- 11 REMOVE UNDERGROUND PRIMARY CABLES FROM P11 TO SWITCH S1 AND FROM SWITCH S1 TO TRANSFORMER T48. CONCRETE ENCASED DUCT MAY BE ABANDONED IN PLACE.
- 12 REMOVE 500KVA PAD MOUNTED TRANSFORMER T48. TURN OVER TO GOV'T. (ADDITIVE BID ITEM)
- 13 REMOVE BLDG. 467 IN ITS ENTIRETY. (ADDITIVE BID ITEM)

GENERAL NOTES

1. SCHEDULE ALL DEMOLITION TO OCCUR AFTER NEW CIRCUIT TO SWITCH S1 IS IN PLACE AND OPERATING.

SITE LEGEND

- EXISTING UNDERGROUND CIRCUIT/WIRES (SEE LETTER DESIGNATION FOR TYPES).
- EXISTING OVERHEAD CIRCUIT/WIRES (SEE LETTER DESIGNATION FOR TYPES).
- NEW UNDERGROUND DUCT AND CIRCUIT.
- OP OVERHEAD PRIMARY.
- OS OVERHEAD SECONDARY.
- OT OVERHEAD TELEPHONE.
- OTV OVERHEAD TELEVISION.
- UP UNDERGROUND PRIMARY
- OM OVERHEAD MESSENGER WIRE
- OC OS OT INDICATES COMBINATION OF CIRCUITS/WIRES.
- EXISTING DOWN GUY.
- EXISTING POLE.
- NEW POLE.

(Click/Boehm & Assoc. 247 Meeting St. Charleston, S.C. 29401 TEL: 778-1111 FAX: 778-1111 WWW.CLICKBOEHM.COM SUBMITTED BY (FIRM NAME) - TITLE TERMINAL BRANCH P/E	
DRAWING REVISIONS Description Rev.	Prep. By Date Appr. By Date
AS-BUILT DRWG. NO CORRECTIONS	
CHARLESTON AIR FORCE BASE CHARLESTON, SOUTH CAROLINA DINING FACILITY ELECTRICAL SITE DEMOLITION PLAN APPROVED: <i>[Signature]</i> DATE: 8/27/04 ED FOR COMMANDER, MAFSC	
Naval Facilities Engineering Command Southern Division Charleston, South Carolina	
SOUTH CAROLINA EPIC ENGINEERING INC. No. 000289 STATE OF SOUTH CAROLINA PROFESSIONAL ENGINEER No. 7188 CHARLES ALLEN	
RECORD DRAWING DATE 9/27/04 CODE LIB. NO. 80081 DRAWING SIZE: D SPEC. NO. D6-88-0938 CONSTR. CONTR. NO. N62467-88-C-0838 NAVFAC DRAWING NO. 5357994 SHEET 159 OF 184	
E-101	