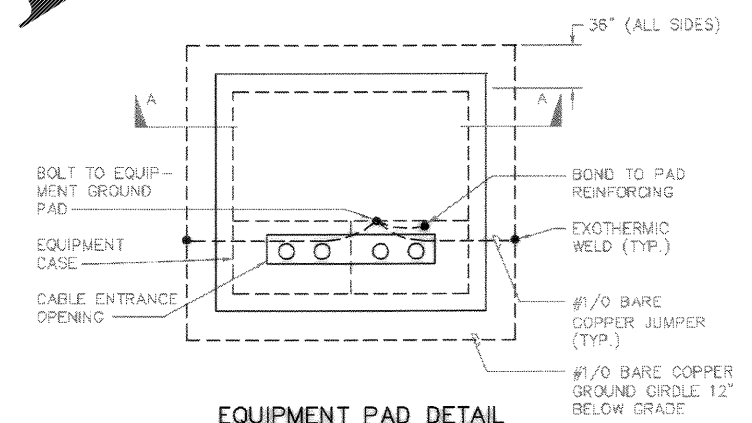


LEGEND

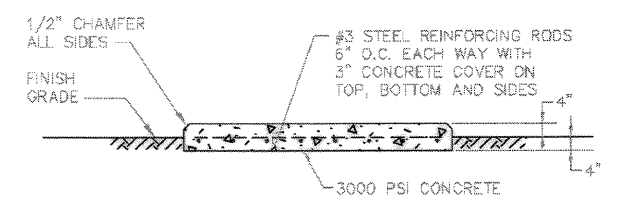
- ⎓ A ENCLOSED FLUORESCENT FIXTURE, LETTER INDICATES TYPE, APPROXIMATE DIMENSIONS AS INDICATED.
- ⎓ A LIGHT FIXTURE PROVIDED WITH EMERGENCY BATTERY INVERTER TO OPERATE 1 LAMP WHEN NORMAL POWER FAILS, CONNECT INVERTER TO UNSWITCHED CIRCUIT CONDUCTOR.
- A OPEN FLUORESCENT FIXTURE, LETTER INDICATES TYPE.
- ⊕ A CEILING MOUNTED FIXTURE, LETTER INDICATES TYPE.
- ⊕ A WALL MOUNTED FIXTURE, LETTER INDICATES TYPE.
- ⊕ A POLE MOUNTED FIXTURE, LETTER INDICATES TYPE.
- ⊕ A FLOODLIGHT/SPOTLIGHT TYPE FIXTURE, LETTER INDICATES TYPE.
- ⊕ EXIT SIGN, BLACKENED AREA(S) INDICATE FACE(S), DIRECTIONAL ARROWS AS INDICATED.
- ⊕ EMERGENCY LIGHTING UNIT WITH NUMBER OF HEADS INDICATED.
- EM LIGHT FIXTURE IDENTIFIER, INDICATES FIXTURE WITH EMERGENCY BATTERY INVERTER TO OPERATE 1 LAMP WHEN NORMAL POWER FAILS, CONNECT INVERTER TO UNSWITCHED CIRCUIT CONDUCTOR.
- NL LIGHT FIXTURE IDENTIFIER, INDICATES FIXTURE CONNECTED TO UNSWITCHED NIGHT LIGHT CIRCUIT.
- \$ SWITCH, 20 AMP, 120-277V, AC (48" A.F.F. UNLESS NOTED OTHERWISE).
SUBSCRIPT: NONE - SINGLE POLE
 3 - 3 WAY
 4 - 4 WAY
 P - WITH PILOT LIGHT
 D - DIMMER (1000 WATTS UNLESS NOTED OTHERWISE)
 M - MOTOR RATED (COORDINATE WITH MOTOR)
 a - LOWER CASE LETTER DENOTES SWITCH THAT CONTROLS LIGHT FIXTURE(S) OR CIRCUIT WITH CORRESPONDING LOWER CASE LETTER
- DISCONNECT SWITCH, UNLESS NOTED OTHERWISE RATING SHALL BE 30 AMP/2 POLE/NEMA 1/NON FUSED (30/2/1/NF). 20AF - INDICATES 20 AMP FUSE. (FUSES SHALL BE DUAL ELEMENT, TIME DELAY, CURRENT LIMITING).
- MP DISCONNECT SWITCH (FURNISHED UNDER DIVISION 15 - INSTALLED AND WIRED UNDER DIVISION 16).
- ⊕ MAGNETIC MOTOR STARTER, SIZED TO MATCH MOTOR PROVIDED.
- ⊕ COMBINATION MAGNETIC MOTOR STARTER, SIZED TO MATCH MOTOR PROVIDED.
- T₁ DRY TYPE TRANSFORMER "T1".
- ⊕ ELECTRIC MOTOR, NUMBER, WHERE INCLUDED, INDICATES HORSEPOWER, (PROVIDED UNDER DIVISION 15 - WIRED UNDER DIVISION 16).
- ⊕ DUPLEX RECEPTACLE OUTLET, 20 AMP, 125V AC, 2 POLE, 3 WIRE, GROUNDING (18" A.F.F. UNLESS NOTED OTHERWISE).
SUBSCRIPT: WP - WEATHERPROOF
EWC - ELECTRIC WATER COOLER

- ⊕ DUPLEX RECEPTACLE OUTLET, SEE ABOVE, MOUNT 6" ABOVE COUNTER. ORIENT WITH GROUND PRONG UP.
- ⊕ DUPLEX RECEPTACLE OUTLET, SEE ABOVE, GROUND FAULT CIRCUIT INTERRUPTER (GFCI). ORIENT WITH GROUND PRONG UP.
- ⊕ DUPLEX RECEPTACLE OUTLET, SEE ABOVE, GFCI, MOUNT 6" ABOVE COUNTER. ORIENT WITH GROUND PRONG UP.
- ⊕ SPECIAL RECEPTACLE OUTLET, RATING AS INDICATED, (18" A.F.F. UNLESS NOTED OTHERWISE).
- ⊕ JUNCTION BOX, COORDINATE WITH EQUIPMENT (18" A.F.F. UNLESS NOTED OTHERWISE).
- ▼ CHARLESTON TYPE "C" COMMUNICATIONS OUTLET CONSISTING OF ONE TELEPHONE JACK ONLY (MOUNT 18" A.F.F.)
- ▼ CHARLESTON TYPE "C" COMMUNICATIONS OUTLET CONSISTING OF ONE TELEPHONE JACK ONLY (MOUNT 6" ABOVE COUNTER)
- ▼ W CHARLESTON TYPE "D" COMMUNICATIONS OUTLET CONSISTING OF ONE TELEPHONE JACK ONLY (MOUNT 52" A.F.F. FOR WALL PHONE)
- ▼ CHARLESTON TYPE "B" COMMUNICATIONS OUTLET CONSISTING OF ONE TELEPHONE JACK & ONE COMPUTER JACK (MOUNT 18" A.F.F.)
- ▼ CHARLESTON TYPE "B" COMMUNICATIONS OUTLET CONSISTING OF ONE TELEPHONE JACK & ONE COMPUTER JACK (MOUNT 6" A.F.F.)
- ▼ CHARLESTON TYPE "G" COMMUNICATIONS OUTLET CONSISTING OF ONE COMPUTER JACK ONLY (MOUNT 18" A.F.F.)
- ▼ CHARLESTON TYPE "G" COMMUNICATIONS OUTLET CONSISTING OF ONE COMPUTER JACK ONLY (MOUNT 6" ABOVE COUNTER)
- ▼ CHARLESTON TYPE "F" COMMUNICATIONS OUTLET CONSISTING OF ONE TV OUTLET ONLY (MOUNT 18" A.F.F.)
- ⊕ DUPLEX RECEPTACLE OUTLET, SEE ABOVE, FLUSH FLOOR MOUNTED.
- P1 POWER PANEL "P1".
- TB1 TELEPHONE BACKBOARD "TB1".
- PC PHOTOCELL (1000 WATTS UNLESS NOTED OTHERWISE).
- M HOUR METER.
- P1-21 INDICATES BRANCH CIRCUIT 21 TO PANEL "P1".
- ⊕ BRANCH CIRCUIT, ARROW INDICATES HOMERUN, CROSS LINES INDICATE NUMBER OF CONDUCTORS, GROUNDING CONDUCTOR IS NOT SHOWN BUT SHALL BE PROVIDED IN ALL CIRCUITS (2#12, #12G, 1/2" UNLESS NOTED OTHERWISE).
- ⊕ FLEXIBLE CONDUIT EQUIPMENT CONNECTION (WITH CIRCUIT CONDUCTORS).
- ⊕ CONDUIT STUBBED OFF.

- ⊕ PA SYSTEM CEILING MOUNTED SPEAKER.
- ⊕ H PA SYSTEM CEILING MOUNTED SPEAKER - HIGH OUTPUT
- ⊕ M PA SYSTEM MICROPHONE OUTLET WITH JACK
- ⊕ W PA SYSTEM WALL MOUNTED SPEAKER.
- ⊕ KEYED NOTE IDENTIFIER
- ⊕ KEYED NOTE IDENTIFIER
- WP WEATHERPROOF



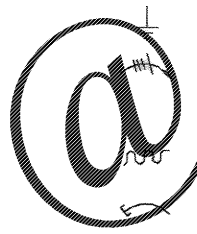
EQUIPMENT PAD DETAIL
SCALE: NONE



SECTION A-A
SCALE: NONE

- NOTES:**
1. ADJUST PAD DIMENSIONS TO ACCOMMODATE ACTUAL EQUIPMENT PROVIDED.
 2. PROVIDE 6" COMPACTED GRAVEL BASE BELOW PAD.
 3. WHERE METAL CONDUIT IS USED, BOND TO GROUNDING SYSTEM/GROUND GRDLE.

Order Plans



www.LDILine.com

| | | | |
|---|---|--|---|
| DRAWING REVISIONS Description 1 AS-BUILT | Prep By: <i>[Signature]</i> Date: <i>[Date]</i> App'd: <i>[Signature]</i> | Click/Borish & Associates 217 Meeting Street Charleston, S.C. 29403 (803) 732-4377 FAX: (803) 732-4378 WWW.CLICKBORISH.COM SUBMITTED BY: (PWA NUMBER) ALLIEN TERRYSON BRAND | CHARLESTON AIR FORCE BASE CHARLESTON, SOUTH CAROLINA DINING FACILITY ELECTRICAL LEGEND & SITE DETAIL APPROVED: <i>[Signature]</i> DATE: 9/27/04 DESIGNED FOR COMMANDER, NAVFAC |
| Naval Facilities Engineering Command Southern Division Charleston, South Carolina | | | |
| RECORD DRAWING DATE: 9/27/04 CODE LIB. NO. 80051 DRAWING SIZE: D SPEC. NO. D6-98-0338 CONSTR. CONTR. NO. N62467-88-C-0338 NAVFAC DRAWING NO. 5357993 SHEET 138 OF 154 | | E-001 | |