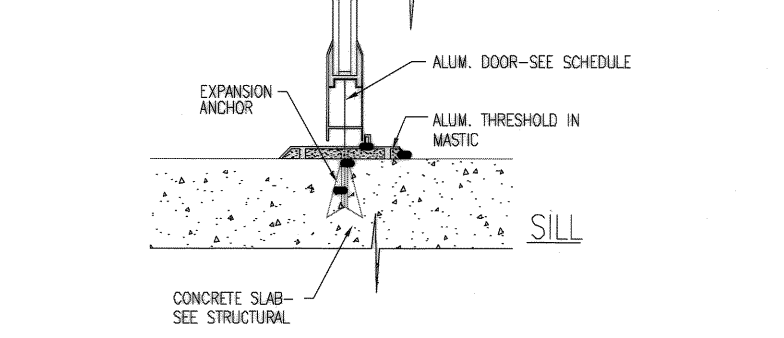
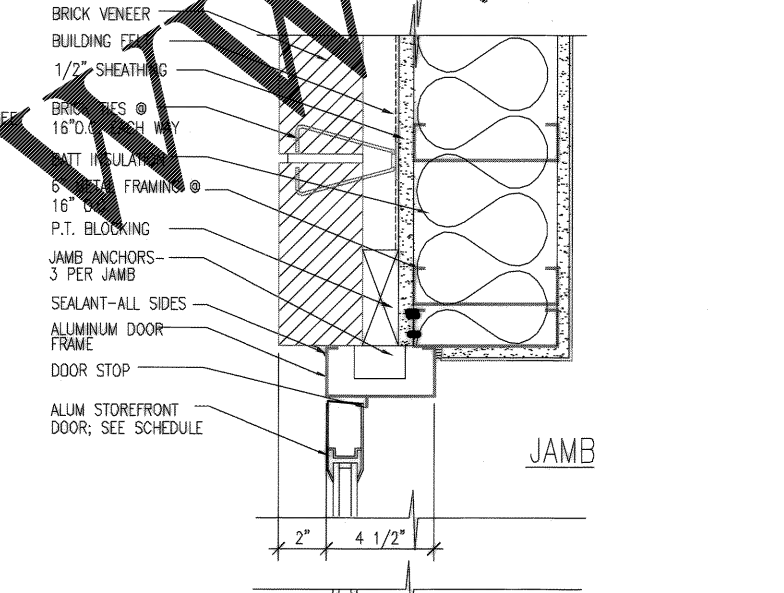
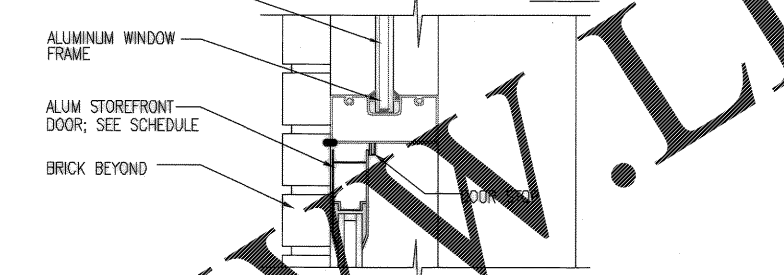
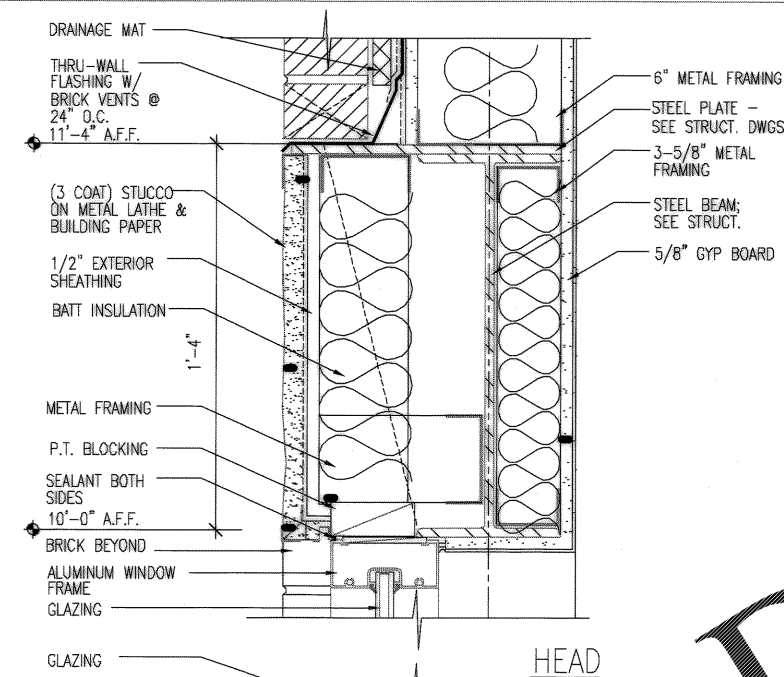
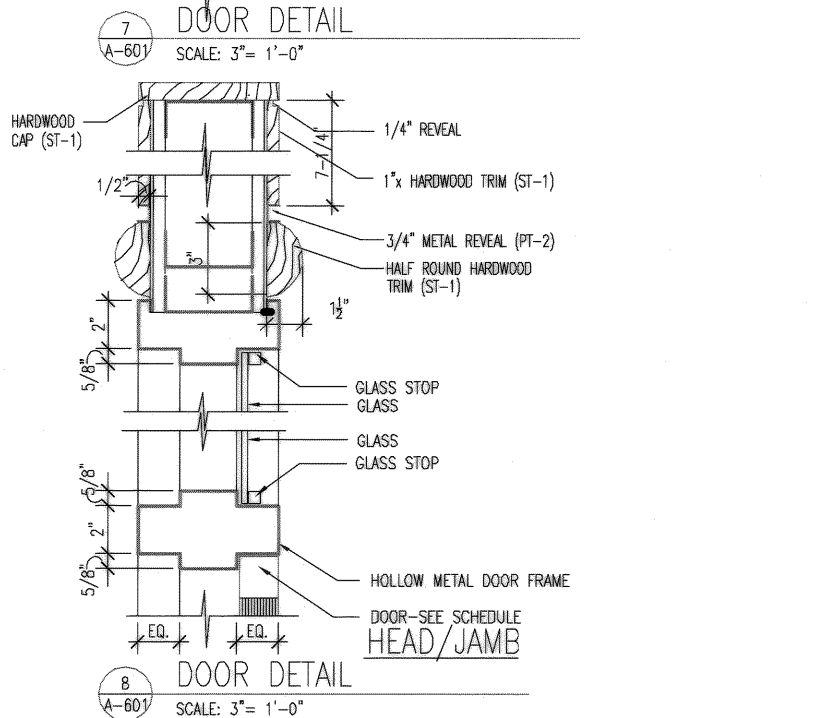
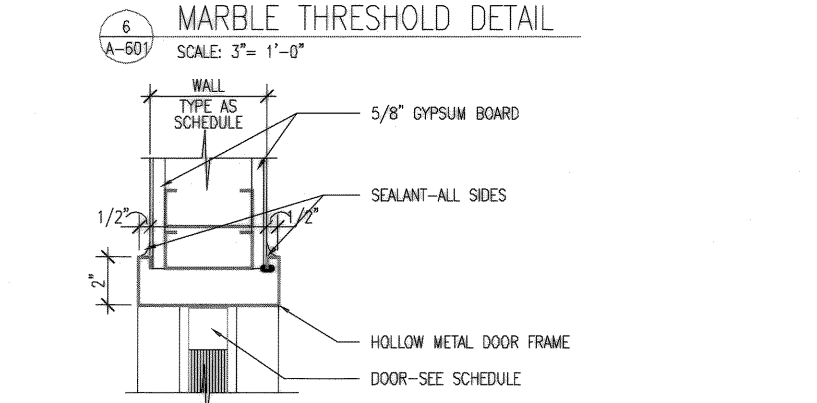
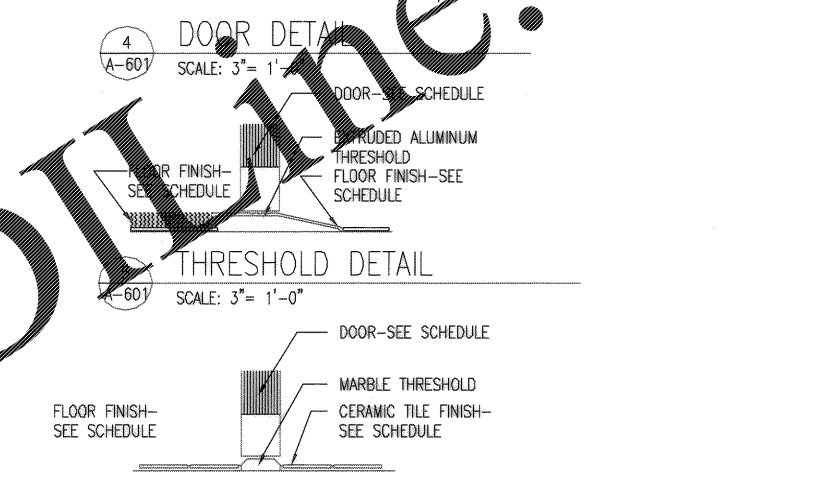
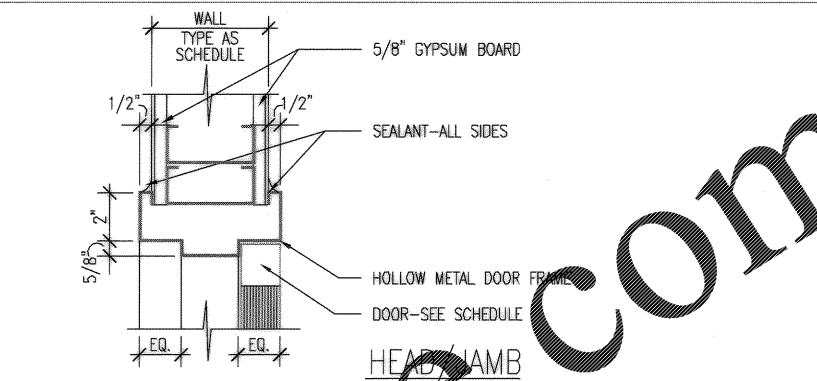


1 DOOR DETAIL SCALE: 3" = 1'-0"
 2 DOOR DETAIL SCALE: 3" = 1'-0"
 3 STOREFRONT DETAIL SCALE: 3" = 1'-0"



4 DOOR DETAIL SCALE: 3" = 1'-0"
 5 DOOR DETAIL SCALE: 3" = 1'-0"
 6 DOOR DETAIL SCALE: 3" = 1'-0"
 7 DOOR DETAIL SCALE: 3" = 1'-0"



8 DOOR DETAIL SCALE: 3" = 1'-0"
 9 DOOR DETAIL SCALE: 3" = 1'-0"
 10 DOOR DETAIL SCALE: 3" = 1'-0"
 11 DOOR DETAIL SCALE: 3" = 1'-0"

Order Plans @

WWW.LDLINE.COM

DRAWING REVISIONS		Prep By	Date	Apprv.	DATE
Description		5/11/04	5/11/04	BOEHM	5/11/04
NO CORRECTIONS					
AS-BUILT DRWG. NO CORRECTIONS					
Rev.					
SUBMITTED BY (FIRM MEMBER-TITLE)		JGT		CH ENGR	
TECHNICAL BRANCH		BOEHM		BOEHM	
DATE		5/11/04		ME. RES. 9-22-98	
APPROVED		BOEHM		P.E.	
CHARLESTON AIR FORCE BASE		CHARLESTON, SOUTH CAROLINA		EFD FOR COMMANDER, NAFAAC	
DINING FACILITY		DOOR DETAILS			
Naval Facilities Engineering Command		Southern Division		Charleston, South Carolina	
STATE OF SOUTH CAROLINA		CLICK/BOEHM & ASSOCIATES, INC.		REGISTERED ARCHITECT	
RECORD DRAWING DATE		9/27/04			
CODE B. NO. 80091					
DRAWING SIZE: D					
SPEC. NO. 05-98-09.39					
CONSTR. CONTR. NO. N62467-98-C-0939					
NAFAAC DRAWING NO. 5357914					
SHEET 89 OF 194					