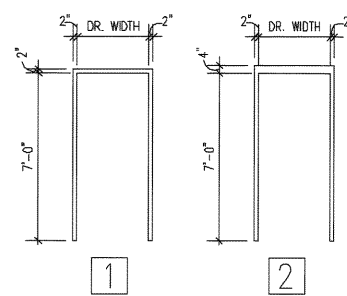
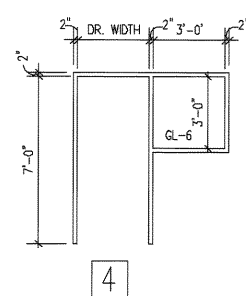
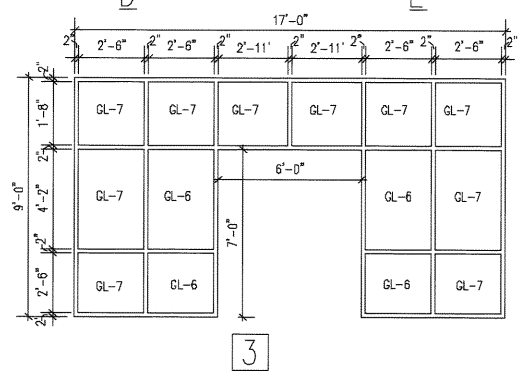


DOOR TYPES



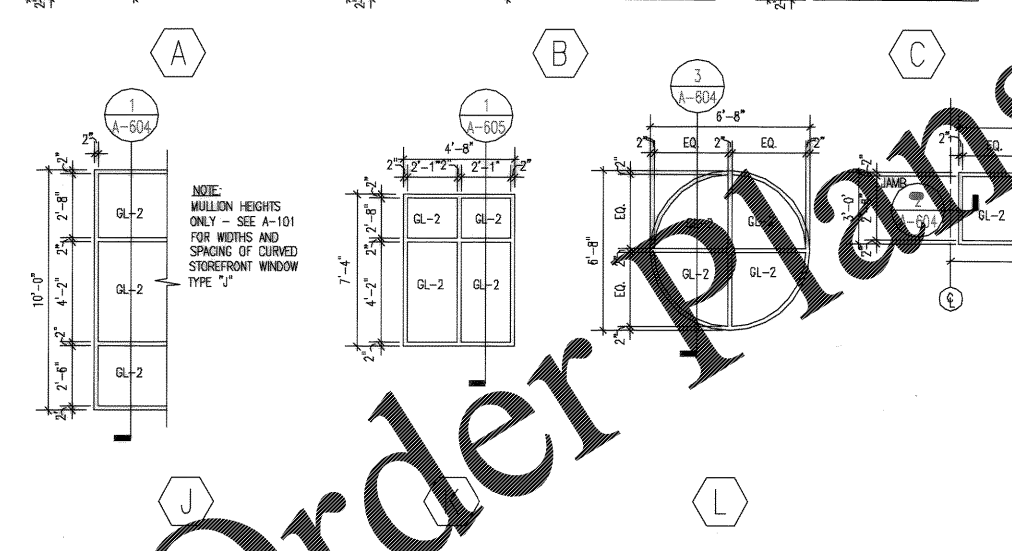
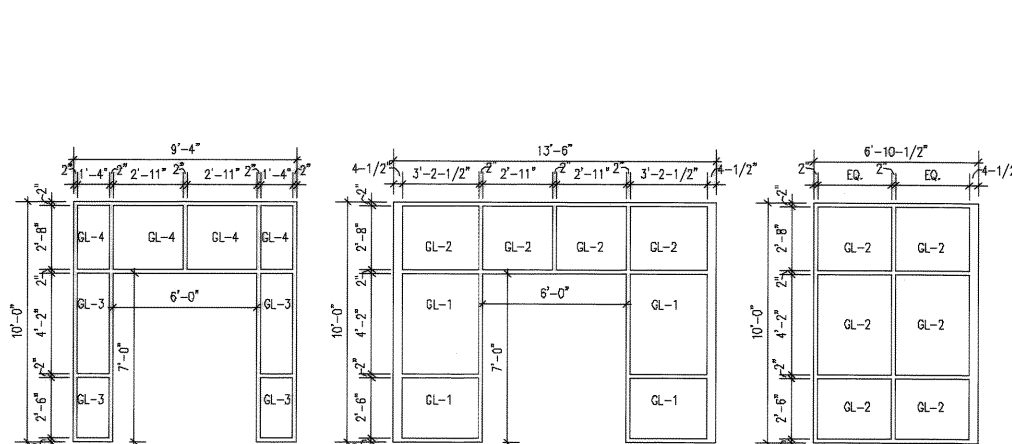
HOLLOW METAL FRAME TYPES



ABBREVIATIONS
 ALUM - ALUMINUM
 SCW - SOLID CORE WOOD
 HM - HOLLOW METAL
 ST - STAIN
 PT - PAINT
 FF - FACTORY FINISH
 STL - STEEL

NOTES
 SEE FINISH SCHEDULE
 ON SHEET A-602 FOR
 PAINT COLORS (PT-#)

NUMBER	TYPE	MATL	WIDTH	HEIGHT	THICK	FIN	U-CU	UL	HDW	FTYPE	FMATL	FFIN	DETAIL	REMARKS
101A	A	ALUM	PR3'-0"	7'-0"	1 3/4"	FF	-	-	1	H	ALUM	FF	3/A-603	GLASS TYPE GL-5
101B	C	SCW	PR3'-0"	7'-0"	1 3/4"	ST-1	-	-	13	-	WD	ST-1	0001-B	GLASS TYPE GL-5
102A	A	ALUM	PR3'-0"	7'-0"	1 3/4"	FF	-	-	1	F	ALUM	FF	5/A-503 SIM.	GLASS TYPE GL-5
102B	C	SCW	PR3'-0"	7'-0"	1 3/4"	ST-1	-	-	12	3	HM	PT-2	6/A-603	-
103A	A	ALUM	PR3'-0"	7'-0"	1 3/4"	FF	-	-	1	H	ALUM	FF	3/A-603	GLASS TYPE GL-5
103B	C	SCW	PR3'-0"	7'-0"	1 3/4"	ST-1	-	-	13	-	WD	ST-1	0001-B	-
104	A	ALUM	PR3'-0"	7'-0"	1 3/4"	FF	-	-	2	A	ALUM	FF	1/A-607 SIM	GLASS TYPE GL-5
105	-	-	4'-0"	7'-0"	-	-	-	-	-	-	ALUM	PT-1	7/A-603 SIM	CASED OPENING
106	A	ALUM	PR3'-0"	7'-0"	1 3/4"	FF	-	-	2	A	ALUM	FF	3/A-603 SIM	GLASS TYPE GL-5
107	B	SCW	3'-0"	7'-0"	1 3/4"	ST-1	-	-	3	1	HM	PT-1	4/A-603	THRESHOLD 5/A-603
108	B	SCW	3'-0"	7'-0"	1 3/4"	ST-1	-	-	3	1	HM	PT-1	4/A-603	THRESHOLD 5/A-603
109	-	-	3'-6"	7'-0"	-	-	-	-	3	-	WD	ST-1	3/A-607 SIM.	CASED OPENING-NO DOOR
110	B	SCW	3'-0"	7'-0"	1 3/4"	ST-1	-	-	4	1	HM	PT-1	4/A-603	THRESHOLD 5/A-603
111	-	-	-	7'-0"	-	-	-	-	-	-	WD	ST-1	3/A-607	CASED OPENING-NO DOOR
112A	-	-	4'-0"	7'-0"	-	-	-	-	1	-	HM	PT-1	7/A-603 SIM.	CASED OPENING-NO DOOR
112B	-	-	3'-6"	7'-0"	-	-	-	-	1	-	HM	PT-1	7/A-603 SIM.	CASED OPENING-NO DOOR
113	F	HM	PR1'-10"	7'-0"	1 3/4"	PT-1	-	-	11	1	HM	PT-1	7/A-603 SIM.	CASED OPENING
114	-	-	-	7'-0"	-	-	-	-	-	-	WD	ST-1	3/A-607	CASED OPENING-NO DOOR
115	B	HM	3'-0"	7'-0"	1 3/4"	PT-1	-	-	8	1	HM	PT-1	4/A-603	THRESHOLD 5/A-603
116	B	HM	PR3'-0"	7'-0"	1 3/4"	PT-4	-	-	7	2	HM	PT-4	1/A-603	-
117	B	HM	3'-0"	7'-0"	1 3/4"	PT-1	-	-	10	1	HM	PT-1	4/A-603	-
119A	F	HM	PR1'-10"	7'-0"	1 3/4"	PT-1	-	-	11	1	HM	PT-1	7/A-603	-
119B	F	HM	PR1'-10"	7'-0"	1 3/4"	PT-1	-	-	11	1	HM	PT-1	7/A-603	-
119C	B	-	3'-0"	7'-0"	-	-	-	-	-	-	HM	PT-1	7/A-603 SIM.	CASED OPENING-NO DOOR
120	B	HM	3'-6"	7'-0"	1 3/4"	PT-1	-	-	5	1	HM	PT-1	4/A-603	-
121	B	HM	3'-0"	7'-0"	1 3/4"	PT-1	-	-	8	1	HM	PT-1	4/A-603	THRESHOLD 5/A-603
122	B	HM	3'-0"	7'-0"	1 3/4"	PT-1	-	-	8	1	HM	PT-1	4/A-603	THRESHOLD 5/A-603
123	D	HM	3'-0"	7'-0"	1 3/4"	PT-1	-	-	4	-	HM	PT-1	4/A-603	-
124	D	HM	3'-0"	7'-0"	1 3/4"	PT-1	-	-	3	-	HM	PT-1	4/A-603	-
126	B	HM	3'-0"	7'-0"	1 3/4"	PT-1	-	-	2	-	HM	PT-4	1/A-603	-
127	B	HM	3'-0"	7'-0"	1 3/4"	PT-1	-	-	1	-	HM	PT-1	4/A-603	-
128	B	HM	3'-0"	7'-0"	1 3/4"	PT-1	-	-	4	-	HM	PT-1	4/A-603	-
129	B	HM	3'-0"	7'-0"	1 3/4"	PT-1	-	-	4	-	HM	PT-1	4/A-603	-
130A	B	HM	3'-0"	7'-0"	1 3/4"	PT-1	-	-	5	1	HM	PT-1	4/A-603	-
130B	B	HM	PR2'-6"	7'-0"	1 3/4"	PT-4	-	-	7	2	HM	PT-4	1/A-603	-
131	B	HM	3'-0"	7'-0"	1 3/4"	PT-4	-	-	6	2	HM	PT-4	1/A-603	-
133	B	HM	3'-0"	7'-0"	1 3/4"	PT-4	-	-	9	2	HM	PT-4	1/A-603	-
134	A	ALUM	PR3'-0"	7'-0"	1 3/4"	FF	-	-	1	B	ALUM	FF	2/A-607	GLASS TYPE GL-5
135	A	ALUM	PR3'-0"	7'-0"	1 3/4"	FF	-	-	1	B	ALUM	FF	2/A-607	GLASS TYPE GL-5
C100	E	STL	10'-0"	7'-0"	-	-	-	-	-	-	STL	PT-4	2/A-606	-
C101	B	HM	3'-0"	7'-0"	1 3/4"	PT-4	-	-	6	2	HM	PT-4	2/A-603	-
C102	B	HM	3'-0"	7'-0"	1 3/4"	PT-4	-	-	6	2	HM	PT-4	2/A-603	-



ALUMINUM STOREFRONT FRAME TYPES

WINDOW TYPES

LOUVER TYPES

SEE SPECIFICATIONS
 SECTION 08800 FOR
 GLASS TYPES (GL-#)

RECORD DRAWING DATE: 9/27/04
 CODE I.D. NO.: 80091
 DRAWING SIZE: D
 SPEC. NO. 05-98-0939
 CONSTR. CONTR. NO.: NS2467-98-C-0939
 NAVFAC DRAWING NO.: 5357912
 SHEET 87 OF 194

APPROVED: [Signature] DATE: 5/1/04
 ED FOR COMMANDER, NAVFAC

CHARLESTON AIR FORCE BASE
 CHARLESTON, SOUTH CAROLINA
 DINING FACILITY
 DOOR & FRAME TYPES

Naval Facilities Engineering Command
 Southern Division
 Charleston, South Carolina

STATE OF SOUTH CAROLINA
 CLK/BOEHM & ASSOCIATES, INC.
 CHARLESTON
 NO. B-80006
 REGISTERED ARCHITECT

Rev. Description Date Apprd. Prepr By
 1 DRWG. CORRECTED TO AS-BUILT 5/1/04 R/W
 2 CLK/BOEHM & ASSOCIATES, INC. 5/1/04 R/W
 3 CLK/BOEHM & ASSOCIATES, INC. 5/1/04 R/W

DRYING REVISIONS
 Description Date Apprd. Prepr By
 1 CLK/BOEHM & ASSOCIATES, INC. 5/1/04 R/W
 2 CLK/BOEHM & ASSOCIATES, INC. 5/1/04 R/W
 3 CLK/BOEHM & ASSOCIATES, INC. 5/1/04 R/W

DATE: 5/1/04
 TIME: 9:25 AM
 SUBMITTED BY (FIRM MEMBER-TITLE): CLK/BOEHM & ASSOCIATES, INC.
 247 Meeting Street, Suite 100 (803) 577-6377
 Charleston, S.C. 29401
 DR. CLK/BOEHM & ASSOCIATES, INC.
 CH ENGR