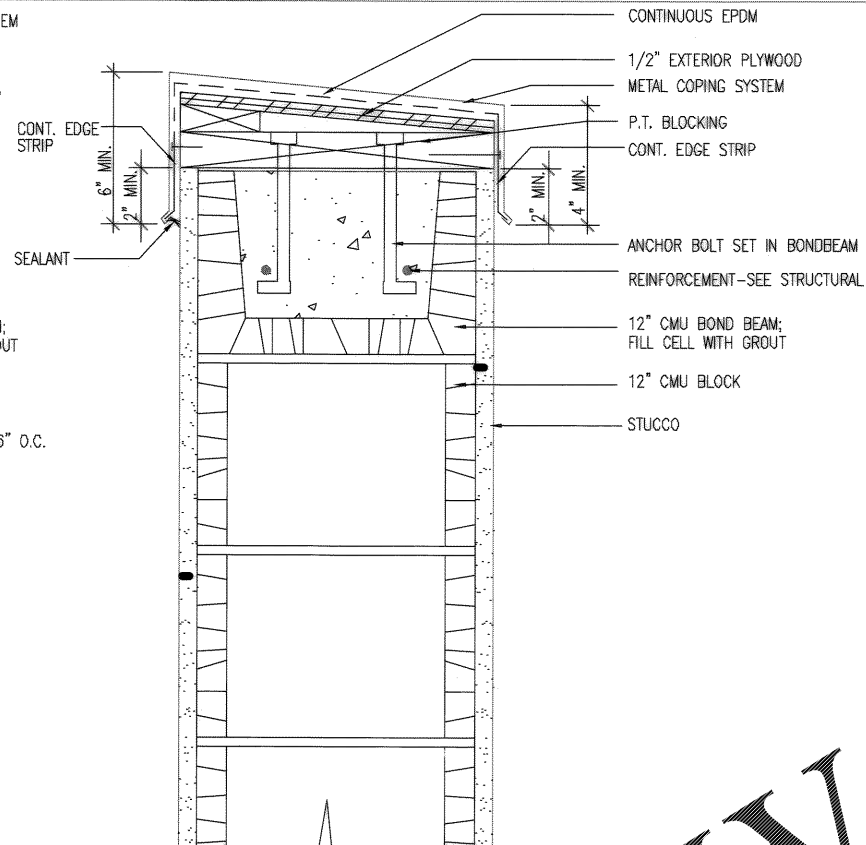
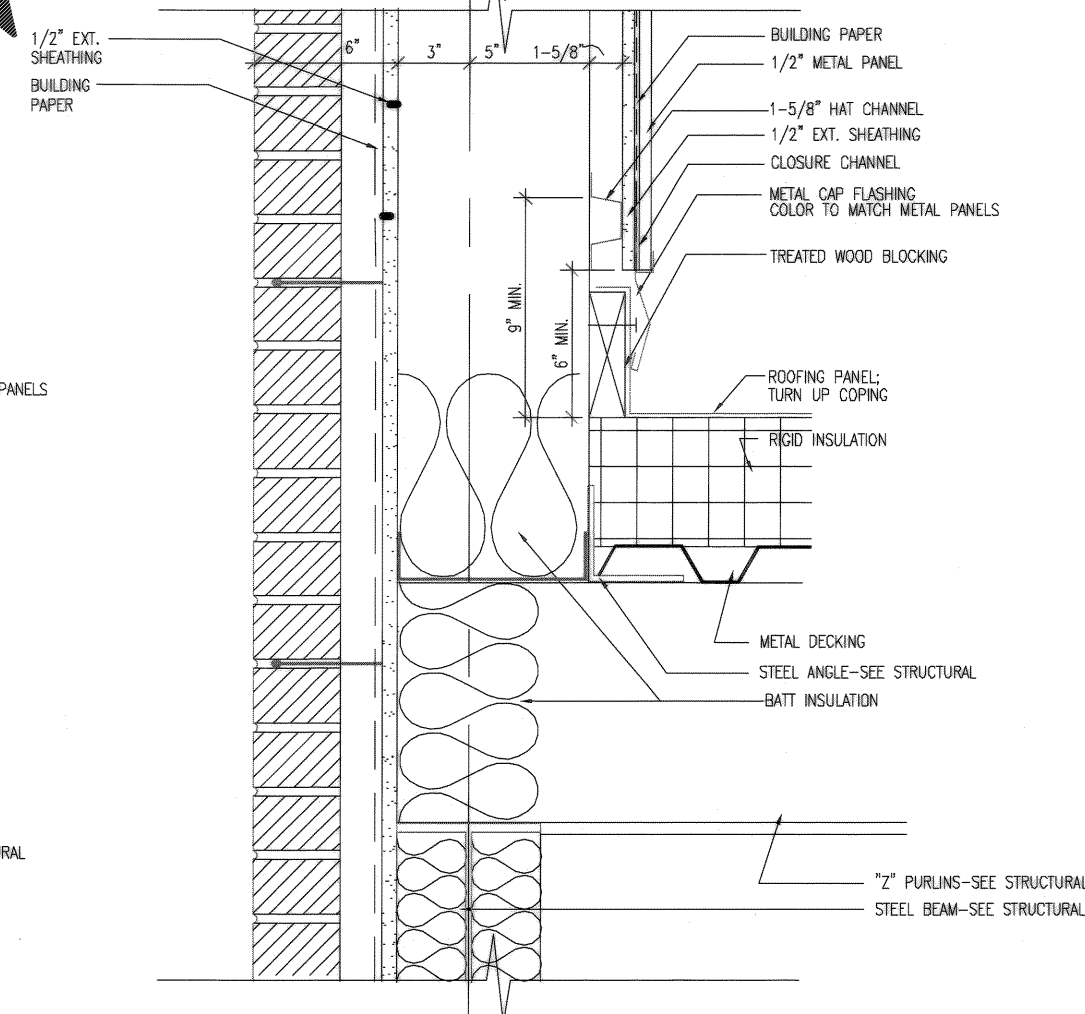
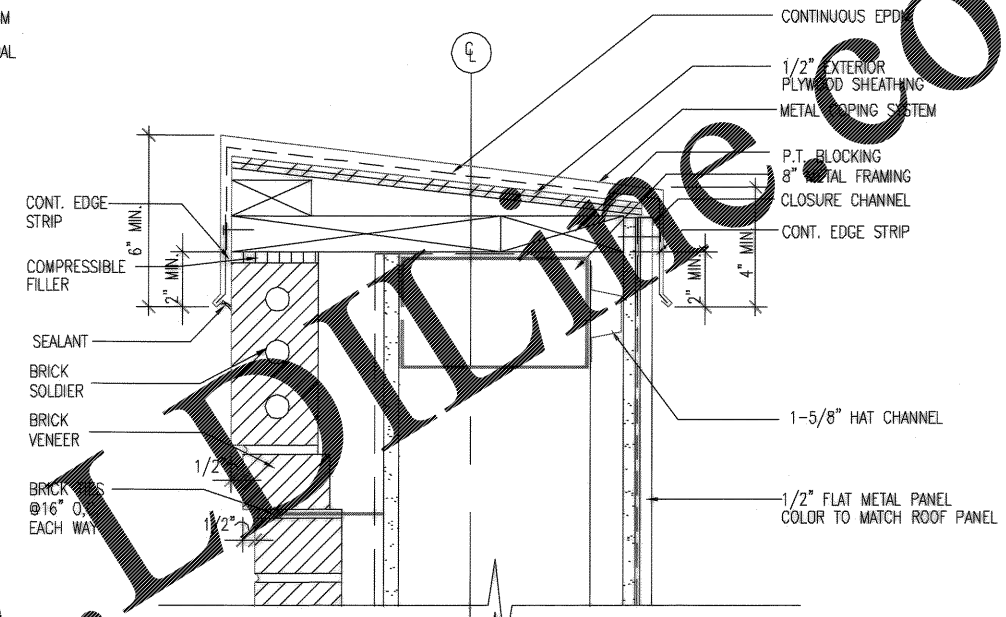


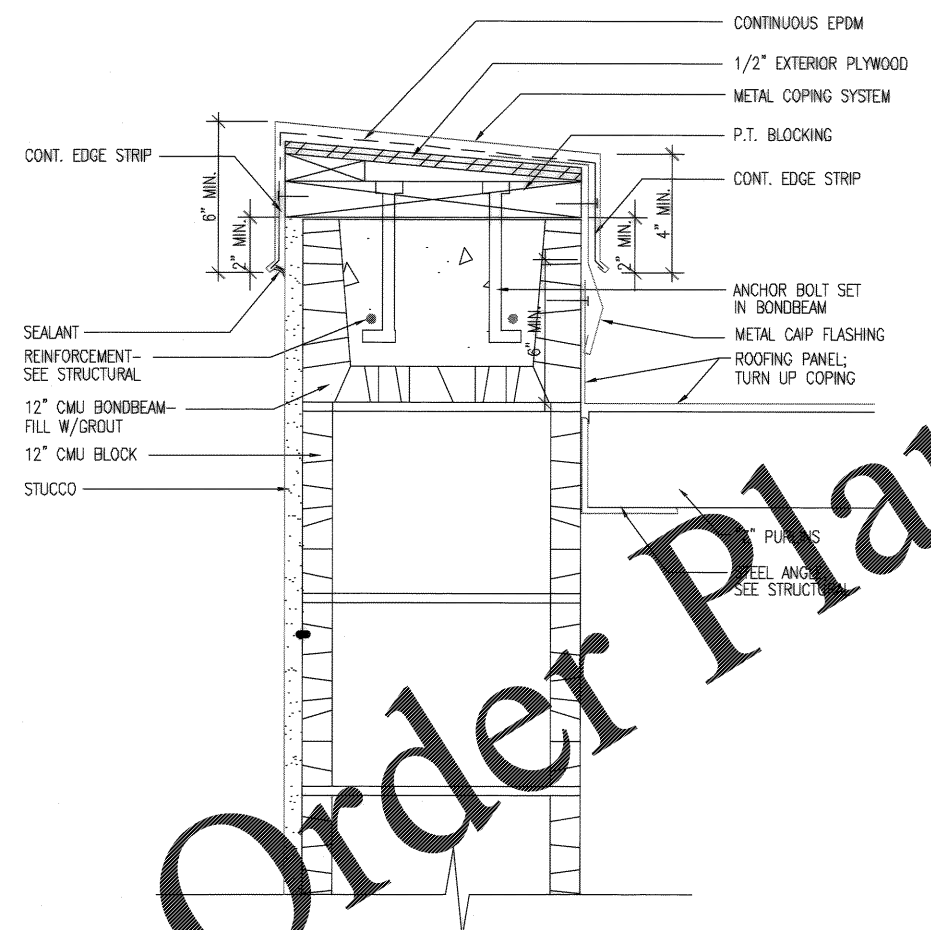
1 PARAPET DETAIL
A-305 SCALE: 3" = 1'-0"



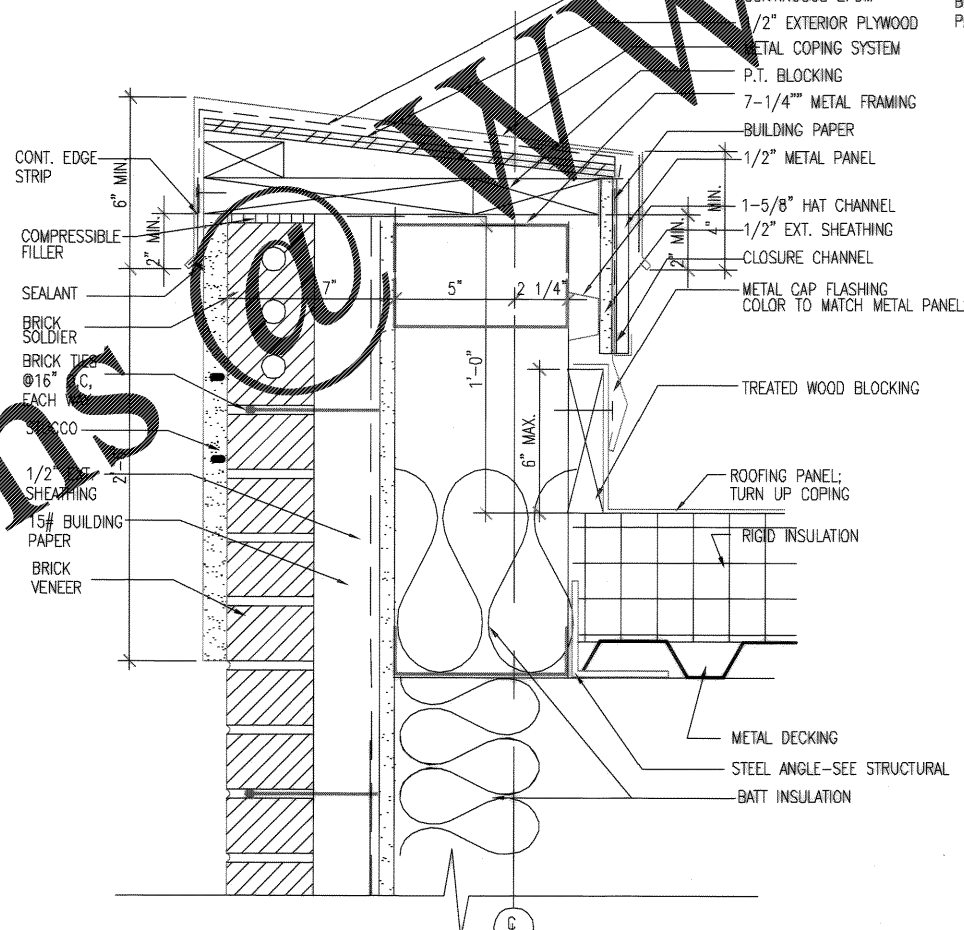
2 PARAPET DETAIL
305 SCALE: 3" = 1'-0"



5 PARAPET DETAIL
305 SCALE: 3" = 1'-0"



3 PARAPET DETAIL
305 SCALE: 3" = 1'-0"



4 PARAPET DETAIL
305 SCALE: 3" = 1'-0"

Order Plans @ WWW.LDLINE.COM

NOTE:
SEE 5/A-501 FOR TYPICAL
PARAPET JOINT DETAIL

DRAWING REVISIONS Description Date Appr.	DRWG. CORRECTED TO AS-BUILT 1/14/04 1/14/04 1/14/04	PREP BY JST JST JST	CHECKED BY BOEHM BOEHM BOEHM	PROJECT NO. 100 100 100	DRAWING NO. 577-6377 577-6377 577-6377
CHARLESTON AIR FORCE BASE DINING FACILITY SECTION DETAILS					
APPROVED: <i>[Signature]</i> DATE: 5/16/04 ETD FOR COMMANDER, NAVFAC					
NOVAL FACILITIES ENGINEERING COMMAND Southern Division Charleston, South Carolina					
RECORD DRAWING DATE: 9/27/04 CODE I.D. NO.: 80091 DRAWING SIZE: D SPEC. NO.: 06-98-0939 CONSTR. CONTR. NO.: NB2467-9B-C-0939 NAVFAC DRAWING NO.: 5357907 SHEET: 82 OF 194					
A-502					