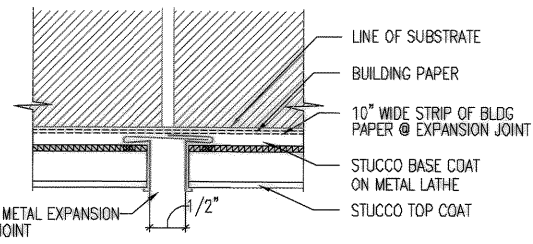


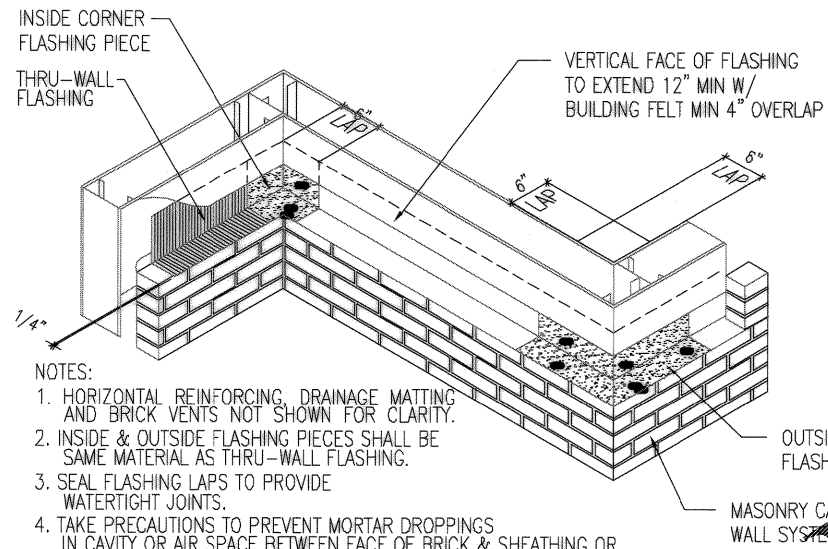
NOTES:

1. HORIZONTAL REINFORCING, DRAINAGE MATTING AND BRICK VENTS NOT SHOWN FOR CLARITY.
2. END DAM FLASHING PIECES SHALL BE SAME MATERIAL AS THRU-WALL FLASHING.
3. SEAL FLASHING LAPS TO PROVIDE WATERTIGHT JOINTS
4. DETAIL SIMILAR WHERE BASE FLASHING ABUTS DOOR FRAMES & OTHER TERMINATIONS.

1 TYPICAL LINTEL FLASHING DETAIL
SCALE: 3/4" = 1'-0"



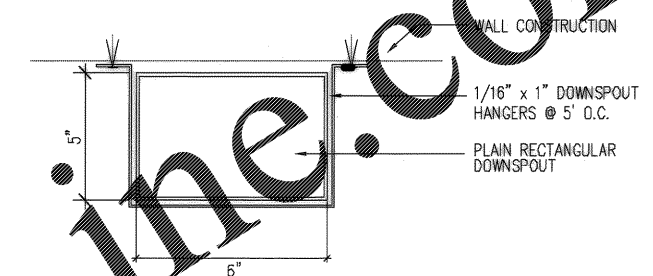
2 BRICK & STUCCO EXPANSION JOINT DETAILS
SCALE: 3/8" = 1'-0"



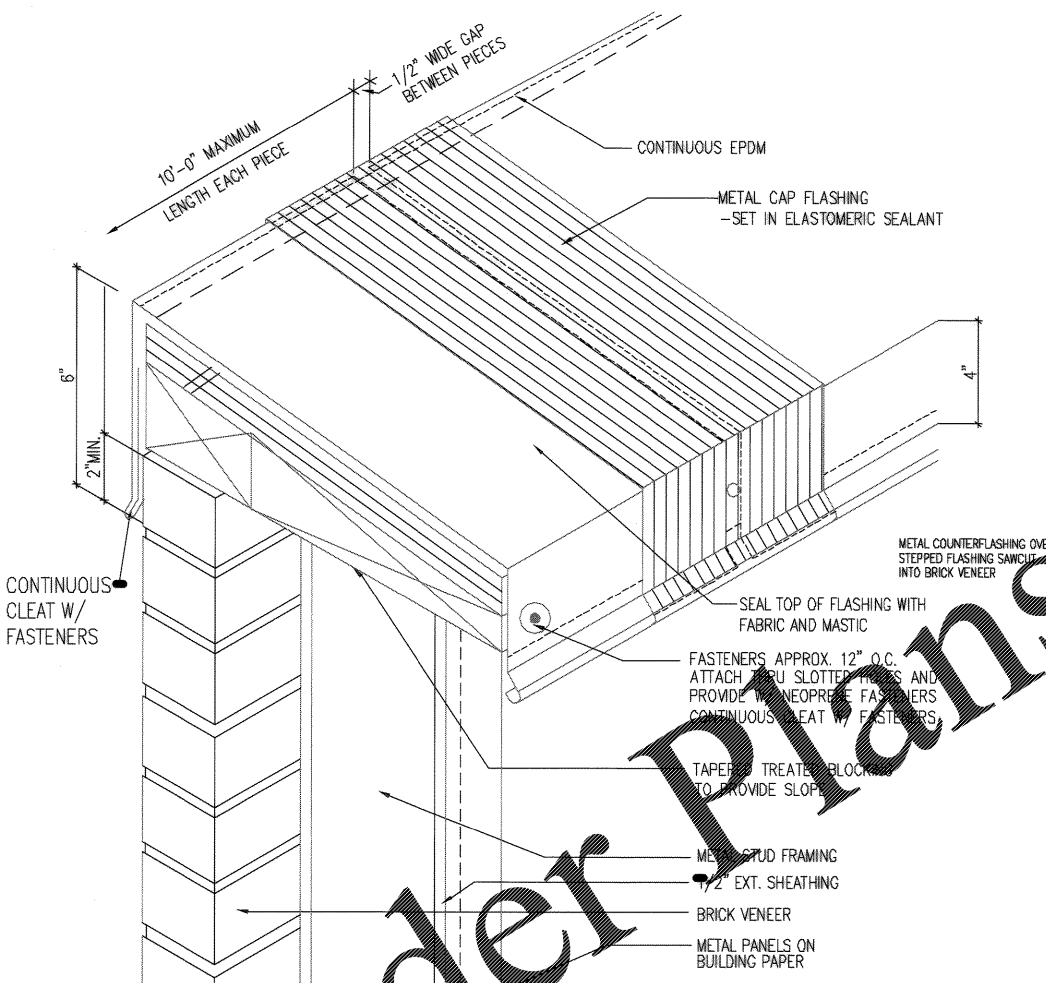
NOTES:

1. HORIZONTAL REINFORCING, DRAINAGE MATTING AND BRICK VENTS NOT SHOWN FOR CLARITY.
2. INSIDE & OUTSIDE FLASHING PIECES SHALL BE SAME MATERIAL AS THRU-WALL FLASHING.
3. SEAL FLASHING LAPS TO PROVIDE WATERTIGHT JOINTS.
4. TAKE PRECAUTIONS TO PREVENT MORTAR DROPPINGS IN CAVITY OR AIR SPACE BETWEEN FACE OF BRICK & SHEATHING OR CONCRETE BLOCK BY TAPERING THE FRESHLY LAID BED OF MORTAR BACK FROM THE EDGE ON THE CAVITY SIDE, SO THAT THE EXTRUSION OF MORTAR THAT OCCURS WHEN THE UNIT IS PLACED DOES NOT CAUSED A PROTRUSION INTO THE CAVITY. INSTALL WEEP-HOLE VENTILATORS AT ALL WATERPROOFED EDGES.

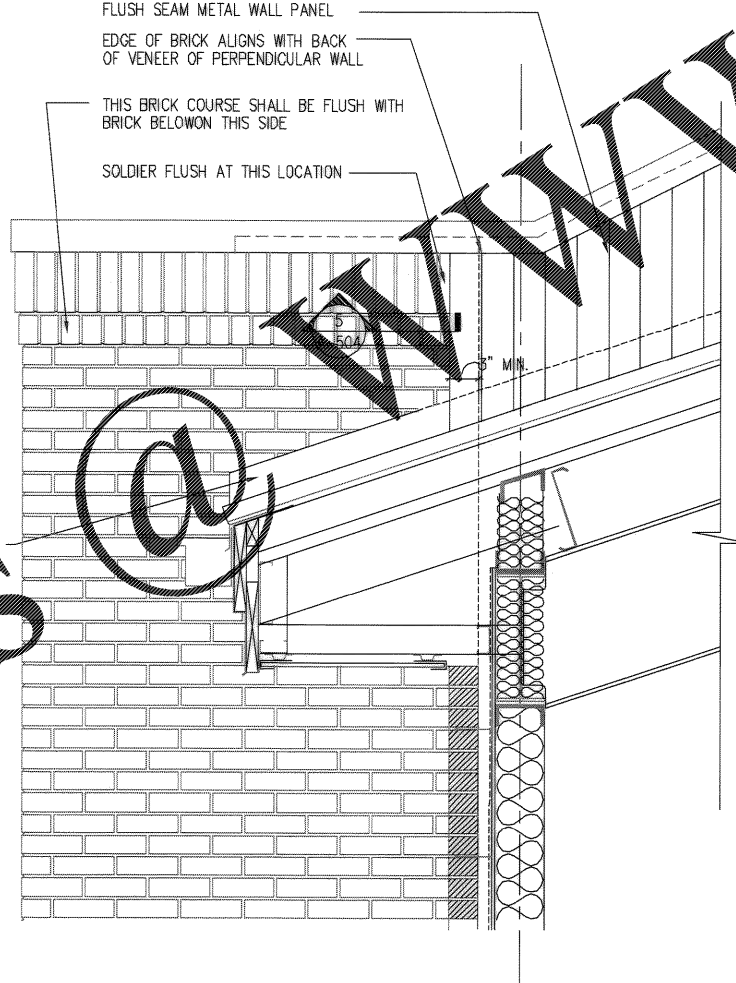
3 BASE FLASHING DETAIL @ METAL STUDS
SCALE: NONE



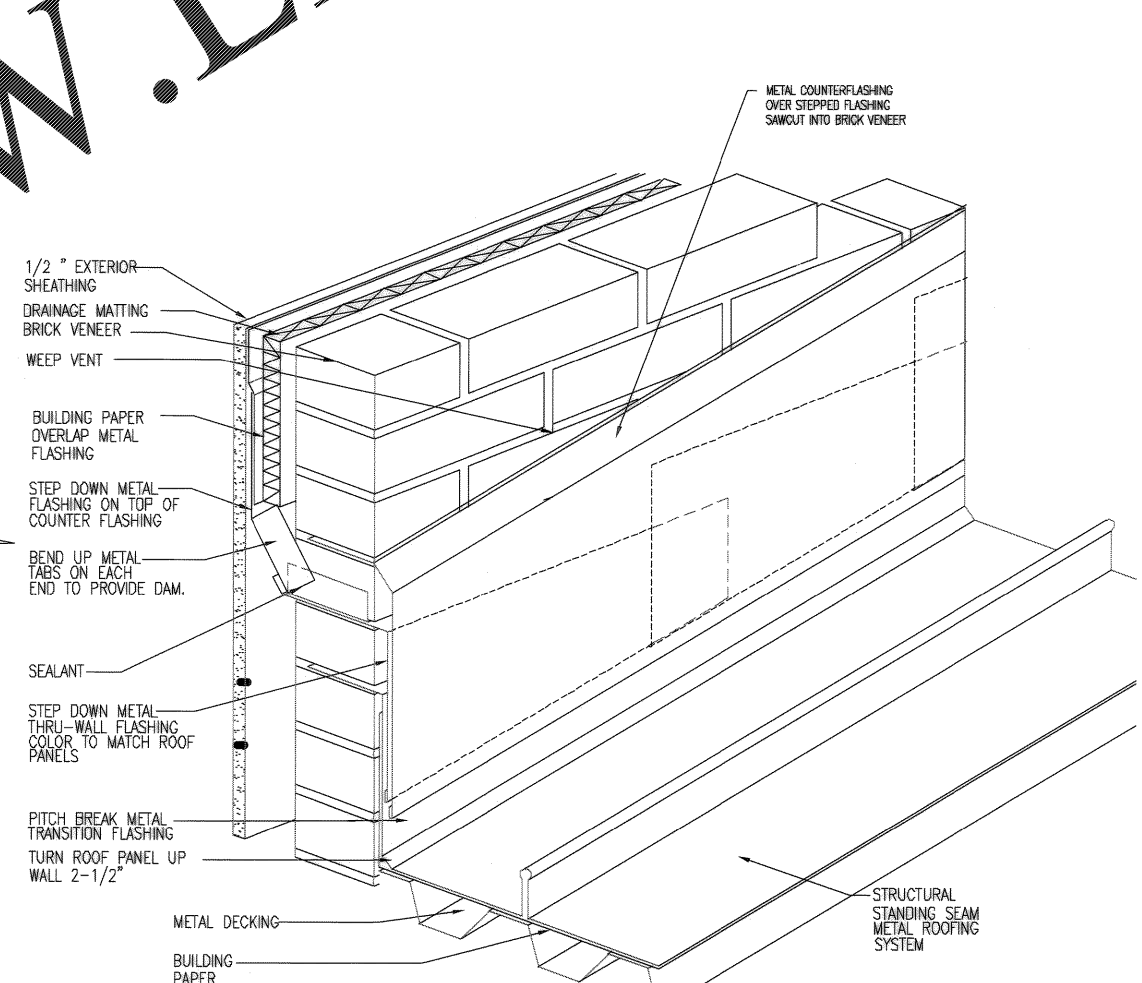
4 DOWNSPOUT DETAIL
SCALE: 3/8" = 1'-0"



5 TYPICAL PARAPET FLASHING DETAIL
SCALE: 3/4" = 1'-0"



6 PARAPET FLASHING ELEVATION
SCALE: 3/4" = 1'-0"



7 STEP FLASHING ELEVATION
SCALE: 3/4" = 1'-0"

Order Plans @ www.LDILine.com

Glick/Boehm & Associates, Inc. 247 Meeting Street, Suite 100 Charleston, S.C. 29401 (803) 577-6577 FAX: (803) 577-6578 WWW.LDILINE.COM	
DRAWING REVISIONS Description Date By App'd Rev. 1 AS-BUILT DIRC. NO CORRECTIONS 1/16/04 RMB/BOEHM	PREPARED BY: RMB/BOEHM CHECKED BY: BOEHM SUBMITTED BY: (FIRM MEMBER-TITLE): DATE: 5/11/04 SHEET: 81 OF 194 A-501
CHARLESTON AIR FORCE BASE DINING FACILITY EXTERIOR DETAILS	CHARLESTON, SOUTH CAROLINA APPROVED: RDM/Boehm, PE DATE: 5/11/04 ETD FOR COMMANDER, NAVFAC
Naval Facilities Engineering Command Southern Division Charleston, South Carolina	STATE OF SOUTH CAROLINA Glick/Boehm & Associates, Inc. CHARLESTON NO. B-90005 REGISTERED ARCHITECT
RECORD DRAWING DATE: 9/27/04 CODE I.D. NO.: 80091 DRAWING SIZE: D SPEC. NO. 06-98-0939 CONSTR. CONTR. NO.: N62467-9B-C-0939 NAVFAC DRAWING NO.: 5357906	SHEET 81 OF 194 A-501 48-114