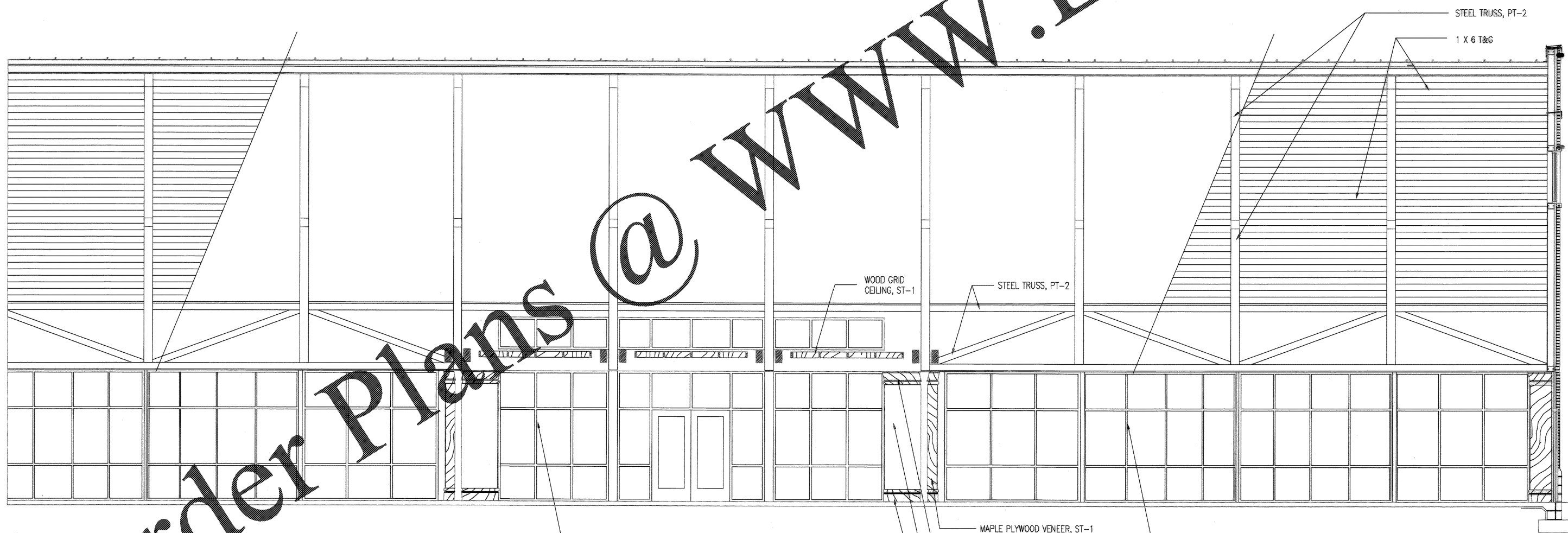
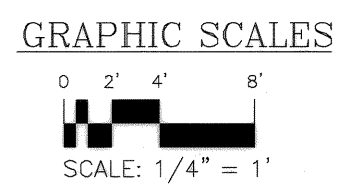


1
A102
INTERIOR ELEVATION
SCALE: 1/4" = 1'-0"



2
A102
INTERIOR ELEVATION
SCALE: 1/4" = 1'-0"



CHARLESTON AIR FORCE BASE CHARLESTON, SOUTH CAROLINA
 DINING FACILITY
 INTERIOR ELEVATIONS
 APPROVED: *RD* DATE: *5/14/04* ETD FOR COMMANDER, NAVFAC

Naval Facilities Engineering Command
 Southern Division
 Charleston, South Carolina

Glick/Boehm & Associates, Inc.
 247 Meeting Street, Suite 100
 Charleston, S.C. 29401 (803) 577-6377
 REGISTERED ARCHITECT
 NO. B-80008

RECORD DRAWING DATE: *9/27/04*
 CODE ID NO.: 80091
 DRAWING SIZE: D
 SPEC. NO. 08-9B-0939
 CONSTR. CONTR. NO. N62467-9B-C-0939
 NAVFAC DRAWING NO. 5357904
 SHEET 79 OF 194

A-406
 468-116