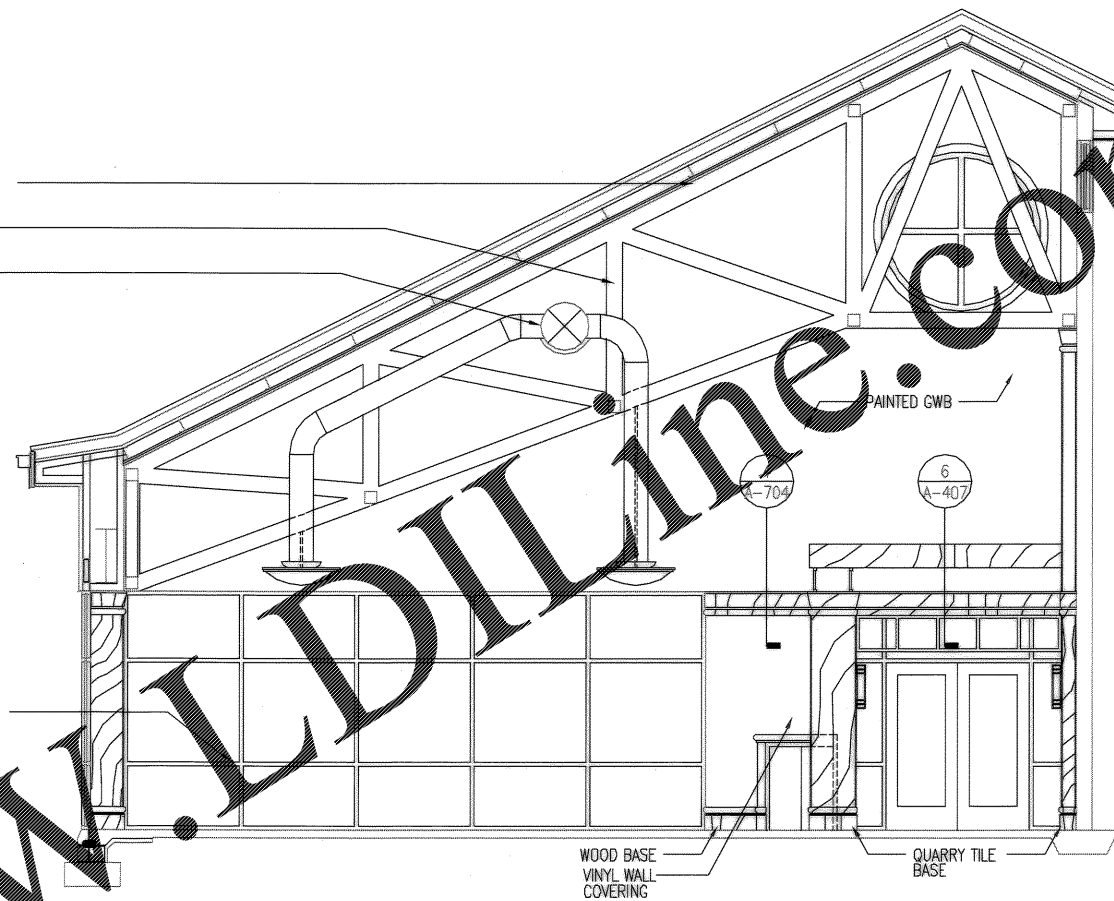
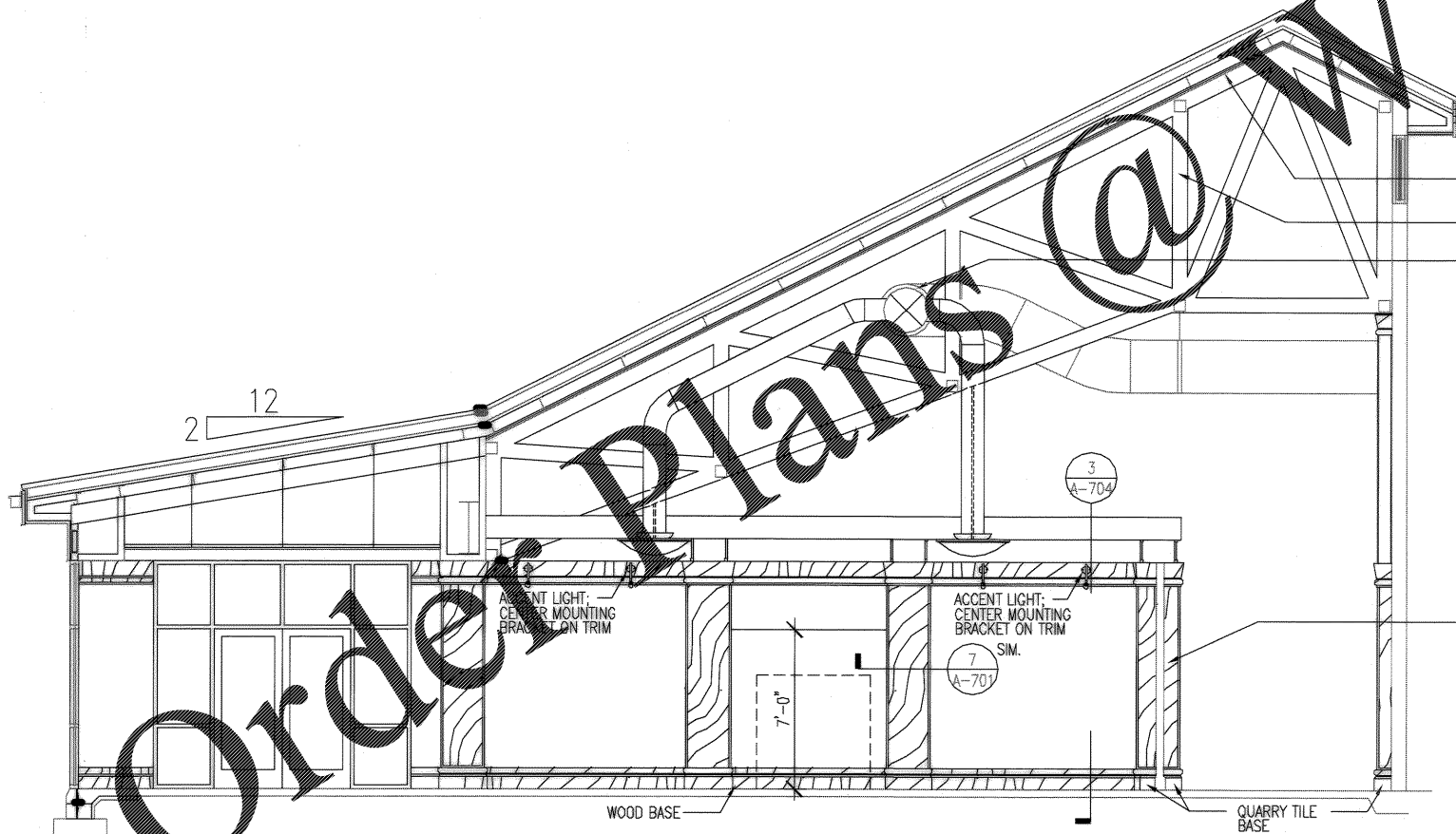


1 INTERIOR ELEVATION  
SCALE: 1/4" = 0'



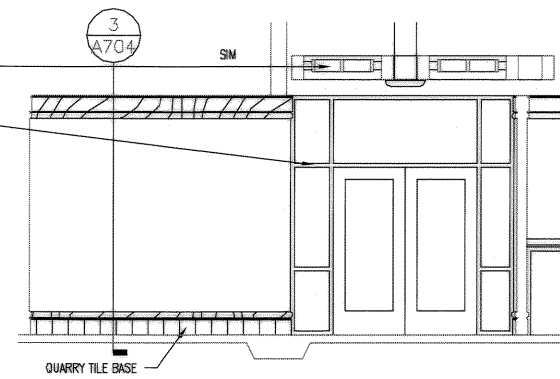
3 INTERIOR ELEVATION  
SCALE: 1/4" = 0'



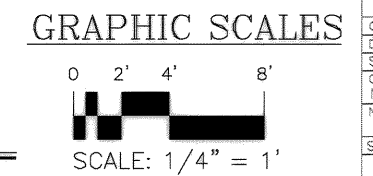
2 INTERIOR ELEVATION  
SCALE: 1/4" = 0'

- 1x6 T&G WOOD SIDING, ST-1
- STEEL TRUSS, PT-2
- MECHANICAL DUCT, PT-3

- WOOD GRID CEILING, ST-1
- HOLLOW METAL FRAME
- MAPLE PLYWOOD VENEER, ST-1



4 INTERIOR ELEVATION  
SCALE: 1/4" = 0'



Charleston Air Force Base  
 Charleston, South Carolina  
 Dining Facility  
 Interior Elevations  
 APPROVED: *Click/Boehm* PE  
 DATE: 9/2/11  
 EFD FOR COMMANDER, NAIFAC

Rev.	Description	Date	By	Appr.
1	AS-BUILT DRWG. NO CORRECTIONS	9/1/11	Click/Boehm	Click/Boehm

DRAWING REVISIONS  
 DICK/BOEHM & ASSOCIATES, INC.  
 247 Meeting Street, Suite 100  
 Charleston, S.C. 29401 (803) 577-6377  
 ARCHITECT  
 SUBMITTED BY (FIRM MEMBER/TITLE):  
 DATE: 9-22-11  
 W/PRES: 9-22-11  
 CH ENGR: BOEHM  
 DR: BOEHM  
 BR: BOEHM

STATE OF SOUTH CAROLINA  
 CLICK/BOEHM & ASSOCIATES, INC.  
 CHARLESTON  
 NO. B-80006  
 REGISTERED ARCHITECT

RECORD DRAWING DATE: 9/2/11  
 CODE: 1.D. NO. 80091  
 DRAWING SIZE: D  
 SPEC. NO. 06-98-0939  
 CONSTR. CONTR. NO. N62467-98-C-0939  
 NAVFAC DRAWING NO. 5357902  
 SHEET 77 OF 194

A-404