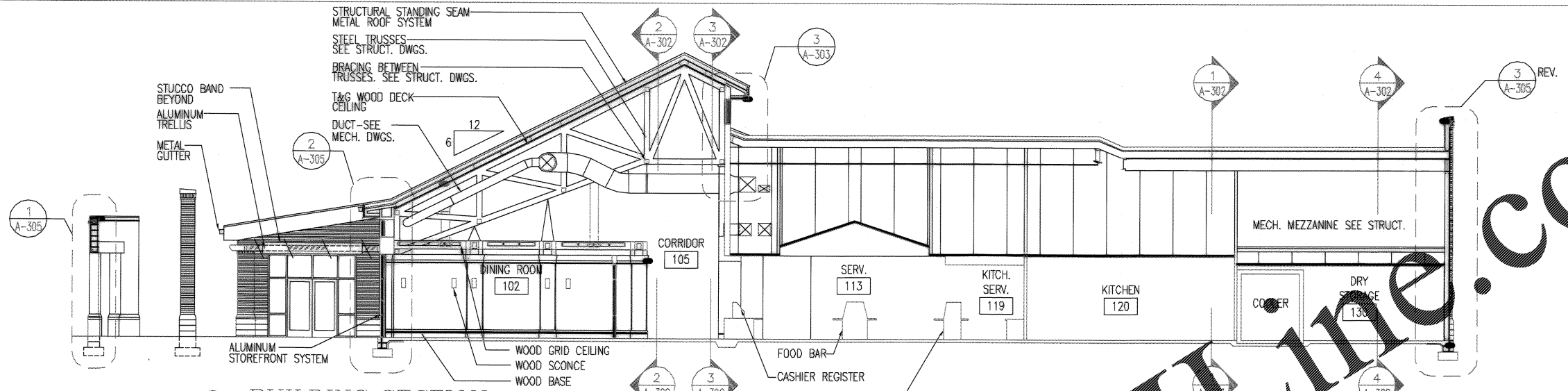
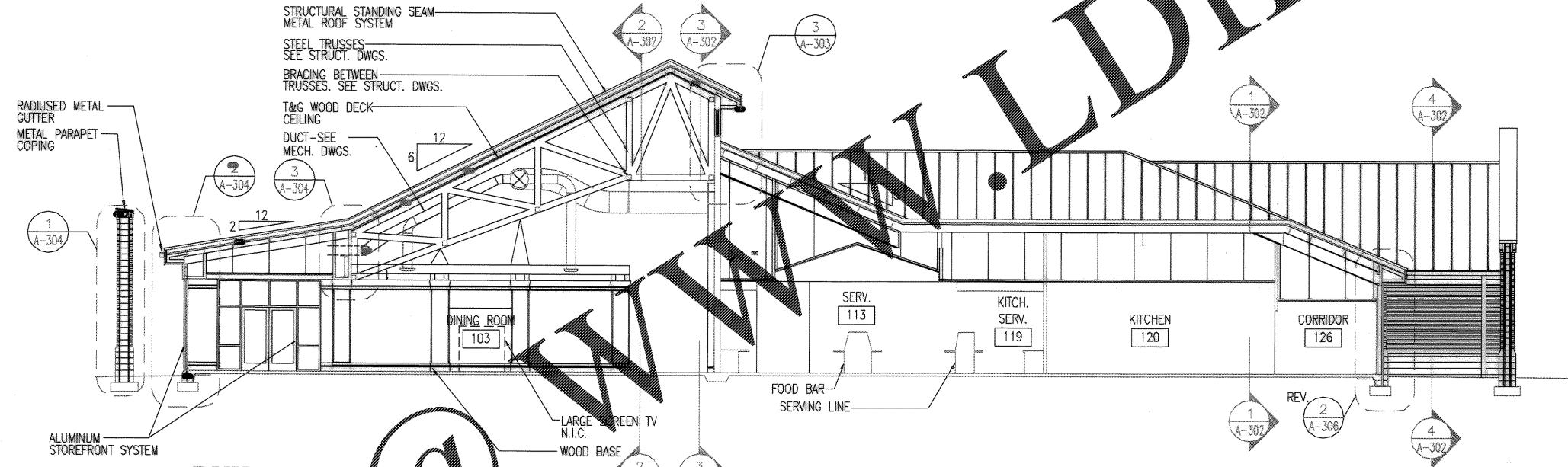


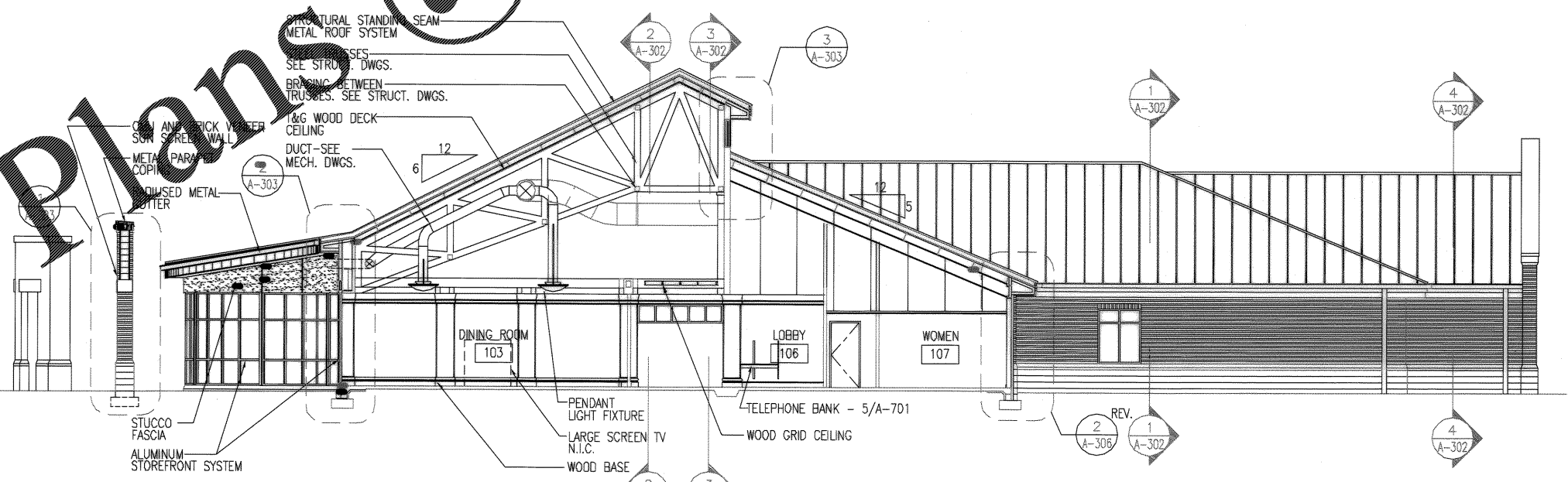
Order Plans @ www.LDOnline.com



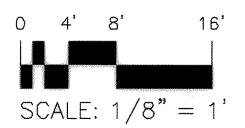
BUILDING SECTION
 1/8"=1'-0" * A-102, A-103, A-104, A-201, A-202, A-203, A-301



BUILDING SECTION
 1/8"=1'-0" * A-102, A-103, A-104, A-201, A-202, A-203, A-301



BUILDING SECTION
 1/8"=1'-0" * A-102, A-103, A-104, A-201, A-202, A-203, A-301



Glick/Boehm & Associates, Inc. 247 Meeting Street, Suite 100 Charleston, S.C. 29401 (803) 577-6377 BOEHM JCS/SMM OF ENR DATE: 9-25-84 ME. RES. 9-25-84	
DRAWING REVISIONS Description Rev. 1 CORR. CORRECTED TO AS-BUILT DATE: 9/11/84 BY: BOEHM APPROV.	APPROVED FOR COMMANDER, NAVFAC DATE: 5/11/84 PE
CHARLESTON AIR FORCE BASE CHARLESTON, SOUTH CAROLINA DINING FACILITY BUILDING SECTIONS	APPROVED FOR COMMANDER, NAVFAC DATE: 5/11/84 PE
Naval Facilities Engineering Command Southern Division Charleston, South Carolina	STATE OF SOUTH CAROLINA Glick/Boehm & Associates, Inc. CHARLESTON NO. B-80006 REGISTERED ARCHITECT
RECORD DRAWING DATE: 9/27/84 CODE I.D. NO.: 80091 DRAWING SIZE: D SPEC. NO. 06-9B-0939 CONSTR. CONTR. NO. N62467-9B-C-0939 NAVFAC DRAWING NO. 5357891 SHEET 66 OF 194	A-301 468-129