

EXTERIOR FINISH SCHEDULE

STANDING SEAM METAL ROOF:	MANUFACTURER'S STANDARD DARK BRONZE
STUCCO:	COLOR TO MATCH FEDERAL STANDARD 595A - 37769 (LIGHT BEIGE).
BRICK:	RIGHTEX BRICK #223 - FLASHED RED WIRE CUT SOUTHERN BRICK #355 - FLASHED RED WIRE CUT PALMETTO BRICK - WIRE CUT FULL RANGE
SPLIT FACE CMU:	LIGHT BEIGE
METAL DOORS & FRAMES:	COLOR TO MATCH FEDERAL STANDARD 595B - 10062 (DARK BRONZE).
MISC. METALS, HANDRAILS, CONDUITS, ETC.	COLOR TO MATCH FEDERAL STANDARD 595B 10062 (DARK BRONZE).
ALUMINUM STOREFRONT & WINDOWS:	DARK BRONZE
SOFFITS:	WHITE
ROOFTOP EQUIPMENT:	PAINT TO MATCH ROOF COLOR
FACIAS, GUTTERS AND DOWNSPOUTS:	MANUFACTURER'S STANDARD DARK BRONZE
ALUMINUM TRELLIS	DARK BRONZE

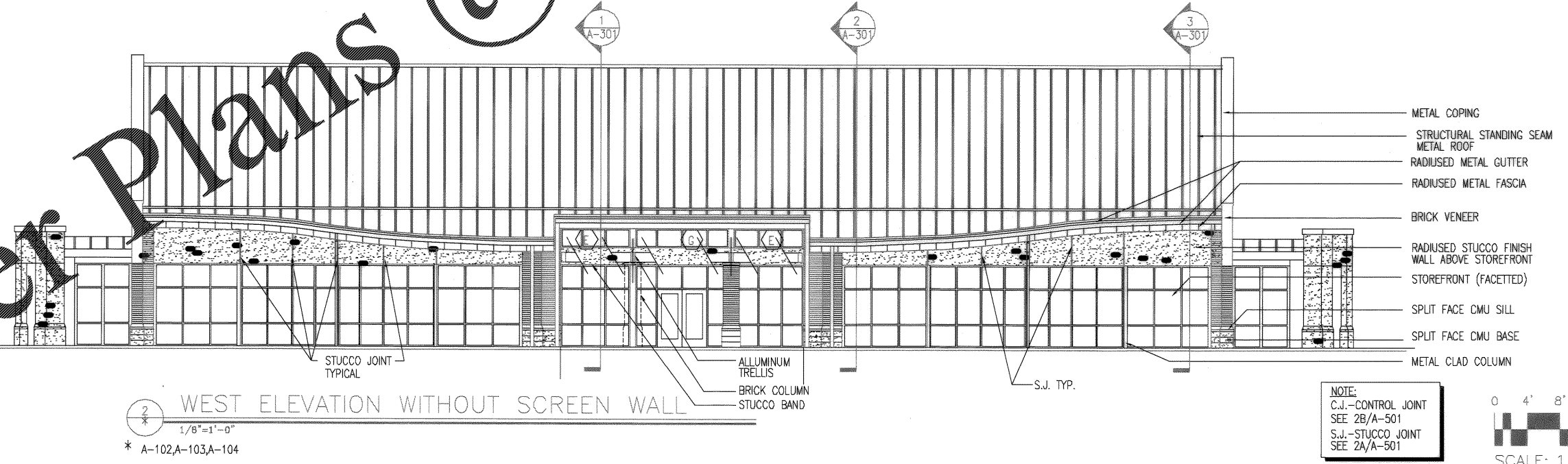
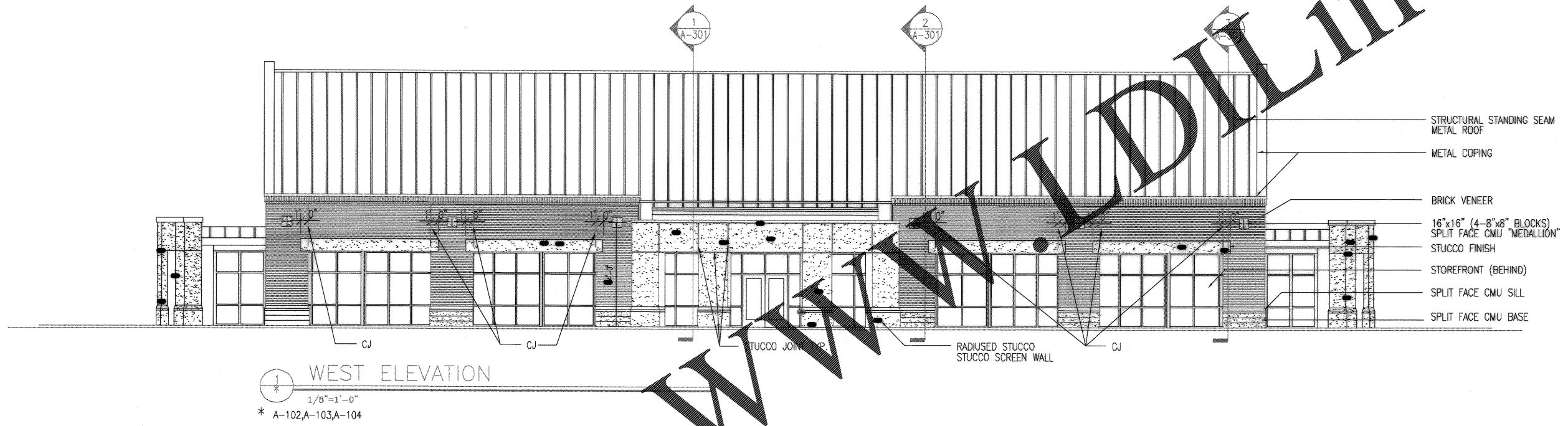
Rev.	Date	Appr'd.	Prep. By	Description
1	5/14/04	[Signature]	AKH	AS-BUILT BRNG. NO CORRECTIONS

CHARLESTON AIR FORCE BASE
 DINING FACILITY
 EXTERIOR ELEVATIONS
 DATE: 5/14/04
 APPROVED: [Signature] EFD FOR COMMANDER, NAVFAC

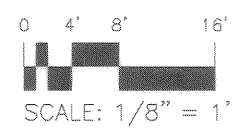
Naval Facilities Engineering Command
 Southern Division
 Charleston, South Carolina

STATE OF SOUTH CAROLINA
 CLICK/BOEHM & ASSOCIATES, INC.
 CHARLESTON NO. B-80006
 REGISTERED ARCHITECT

RECORD DRAWING DATE: 9/27/04
 CODE I.D. NO.: 80091
 DRAWING SIZE: D
 SPEC. NO. 08-98-0939
 CONSTR. CONTR. NO. N62467-98-C-0939
 NAVFAC DRAWING NO. 5357888
 SHEET 63 OF 194
A-201



NOTE:
 C.J. - CONTROL JOINT
 SEE 2B/A-501
 S.J. - STUCCO JOINT
 SEE 2A/A-501



Order Plans @ www.worldline.com