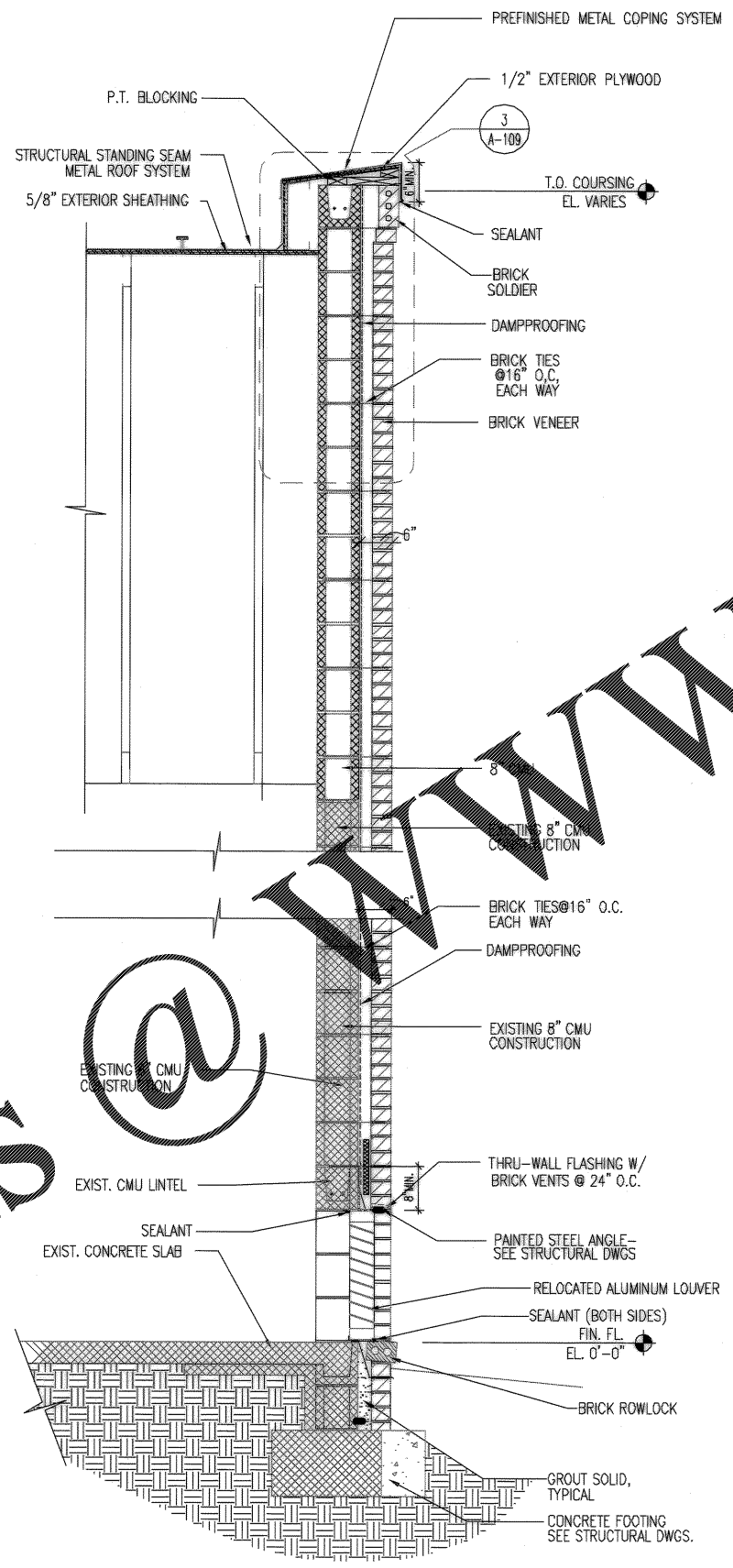


1 WALL SECTION
A-108 3/4"=1'-0"



2 WALL SECTION
A-108 3/4"=1'-0"

WWW.LDILine.com

Order Plans

CHARLESTON AIR FORCE BASE CHARLESTON, SOUTH CAROLINA DINING FACILITY EXISTING CHILLER BUILDING - DETAILS APPROVED: <i>R. Davis</i> DATE: 5/11/84 ETD FOR COMMANDER, NAVFAC		Click/Boehm & Associates, Inc. 247 Meeting Street, Suite 100 Charleston, S.C. 29401 (803) 577-6377 CHK: BOEHM DR: DRK CH ENGR: CH ENGR DATE: 3-2-84 VICE PRES: 3-2-84	
DRAWING REVISIONS Description Rev. 1 AS-BUILT DRWG. NO CORRECTIONS	Prep By: <i>AJH</i> Date: <i>5/11/84</i> App'd: <i>AJH</i> Date: <i>5/11/84</i>	Revisions Description Rev. 1 AS-BUILT DRWG. NO CORRECTIONS	Submitted by (Firm Member-Title): Technical Branch:
Naval Facilities Engineering Command Southern Division Charleston, South Carolina		STATE OF SOUTH CAROLINA CLICK/BOEHM & ASSOCIATES, INC. CHARLESTON NO. B-8006 REGISTERED ARCHITECT	
RECORD DRAWING DATE: 9/27/84 CODE I.D. NO.: 80091 DRAWING SIZE: D SPEC. NO. 06-98-0939 CONSTR. CONTR. NO. N62467-98-C-0939 NAVFAC DRAWING NO. 5357885 SHEET 60 OF 194		A-107	