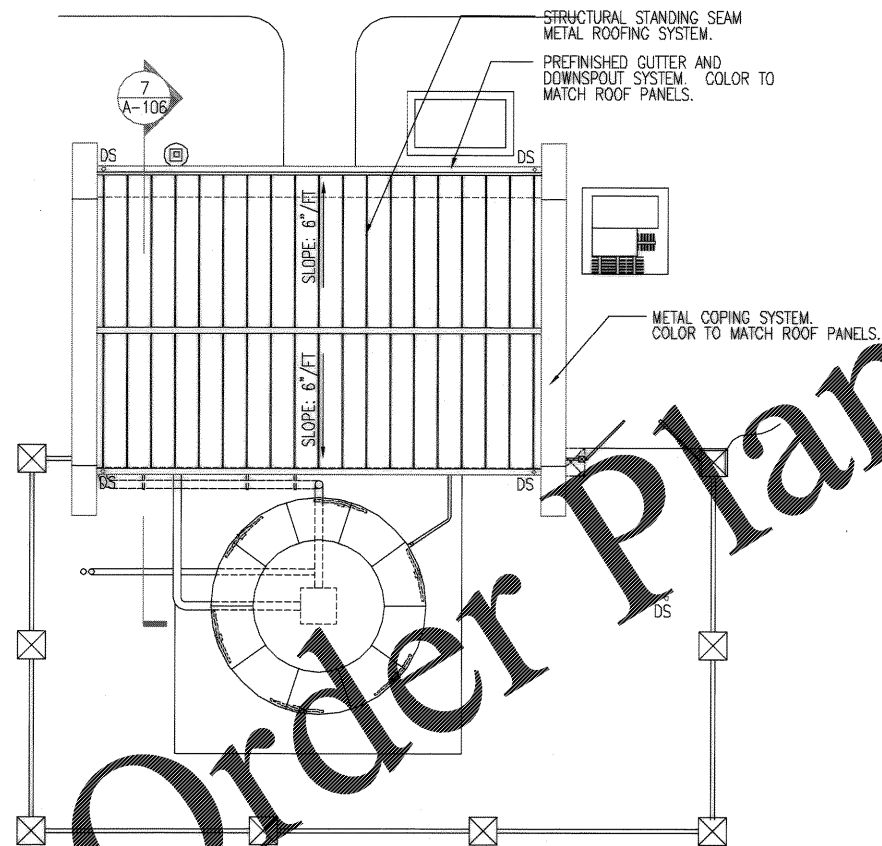
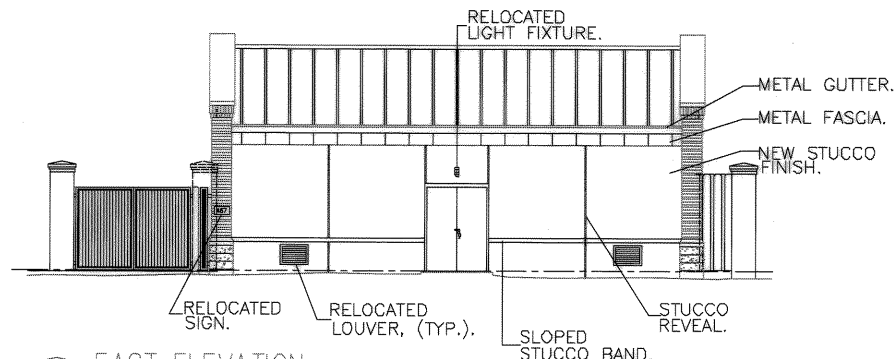


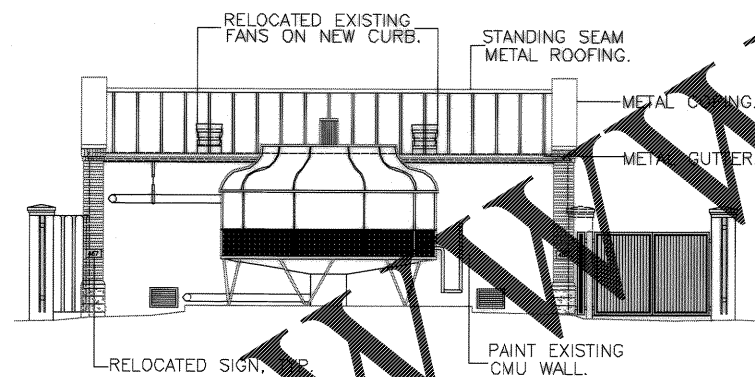
1 EXISTING CHILLER IMPROVEMENT PLAN
A-106 SCALE: 1/8"=1'-0"



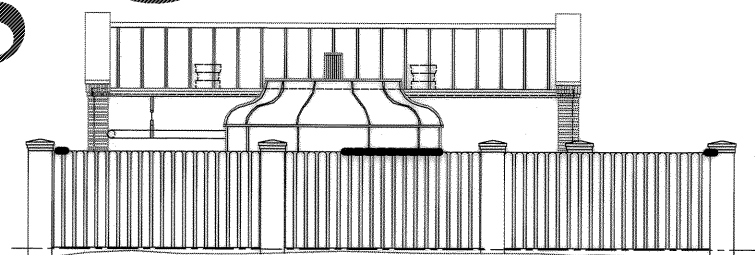
1 EXISTING CHILLER IMPROVEMENT ROOF PLAN
A-106 SCALE: 1/8"=1'-0"



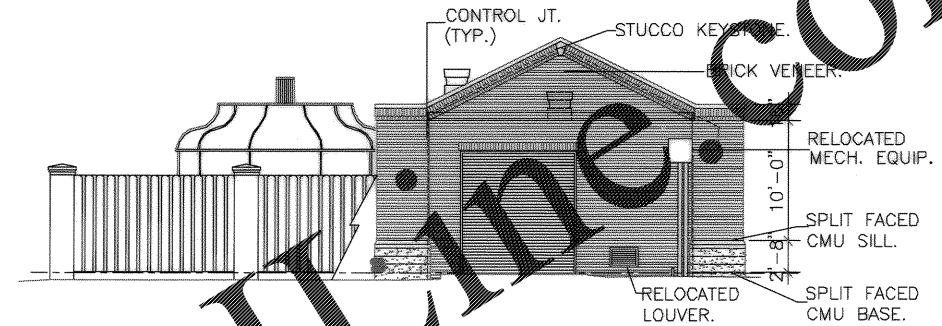
2 EAST ELEVATION
A-106 SCALE: 1/8"=1'-0"



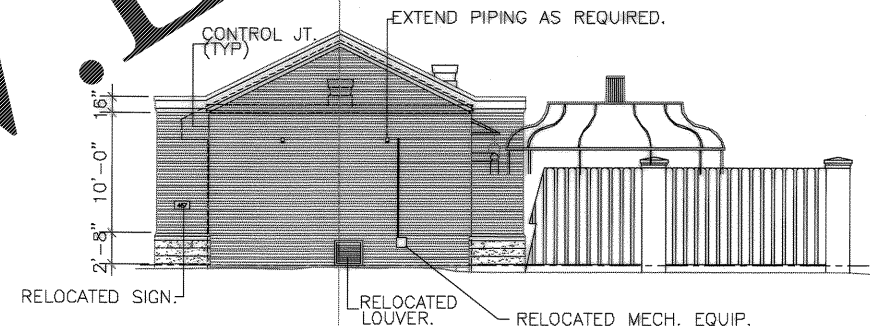
4 WEST ELEVATION
A-106 SCALE: 1/8"=1'-0"



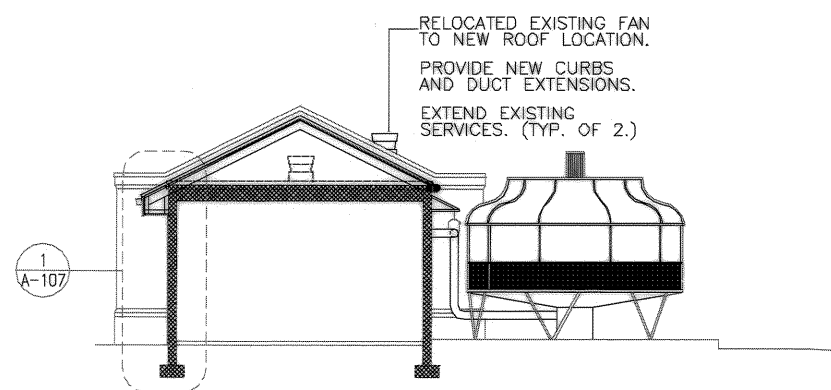
6 WEST ELEVATION
A-106 SCALE: 1/8"=1'-0"



3 SOUTH ELEVATION
A-106 SCALE: 1/8"=1'-0"

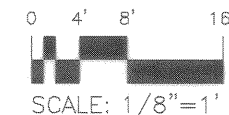


5 NORTH ELEVATION
A-106 SCALE: 1/8"=1'-0"



7 SECTION
A-106 SCALE: 1/8"=1'-0"

NOTE: 1. IMPROVEMENTS TO THE EXISTING CHILLER BUILDING IS PART OF THE BASE BID.
2. IF THE CHILLER PLANT REPLACEMENT OPTION IS CHOSEN, ALL WORK SHOWN ON THIS SHEET WILL BE OMITTED.



Rev.	Description	Prep By	Date	Appr.
1	AS-BUILT DRWG. NO CORRECTIONS	JC	11/14/04	JC

DRAWING REVISIONS

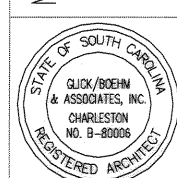
CHARLESTON AIR FORCE BASE CHARLESTON, SOUTH CAROLINA

DINING FACILITY

EXISTING CHILLER BUILDING-IMPROVEMENTS

APPROVED: *R.D. [Signature]* DATE: 5/14/04 ETD FOR COMMANDER, NAIFAC

Naval Facilities Engineering Command
Southern Division
Charleston, South Carolina



RECORD DRAWING DATE	9/27/04
CODE I.D. NO.	80091
DRAWING SIZE	D
SPEC. NO. 06-98-0939	
CONSTR. CONTR. NO.	N62467-98-C-0939
NAVFAC DRAWING NO.	5357884
SHEET	59 OF 194

A-106