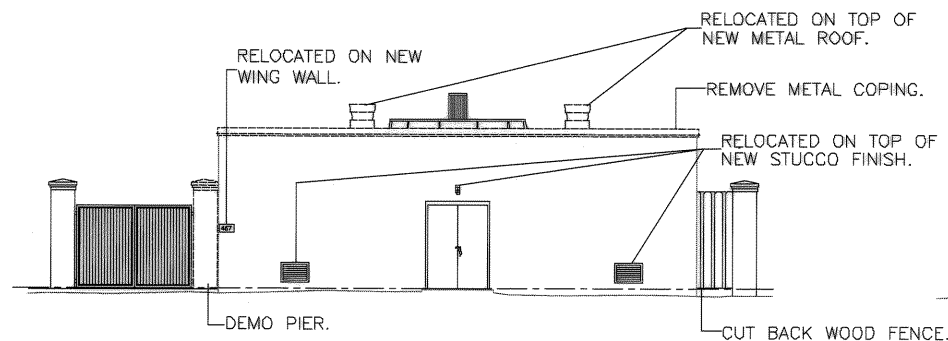
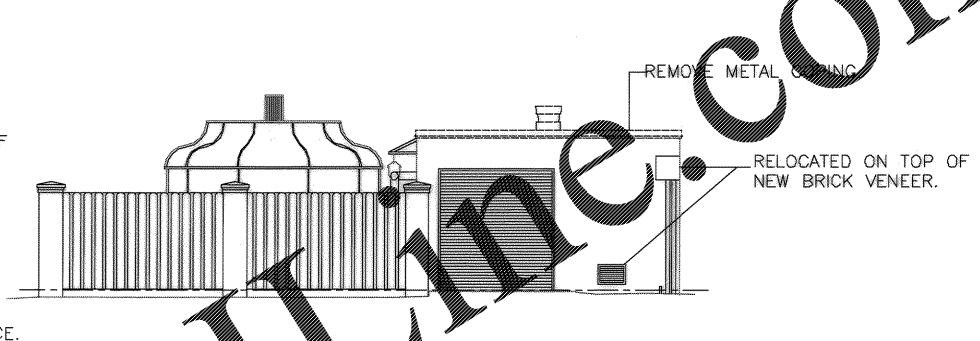


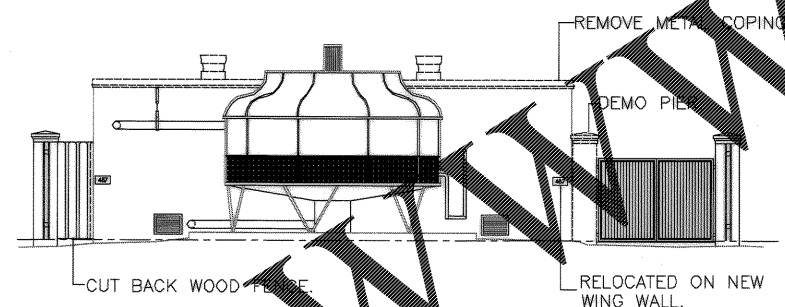
1 EXISTING CHILLER BUILDING PLAN
A-106 SCALE: 1/8"=1'-0"



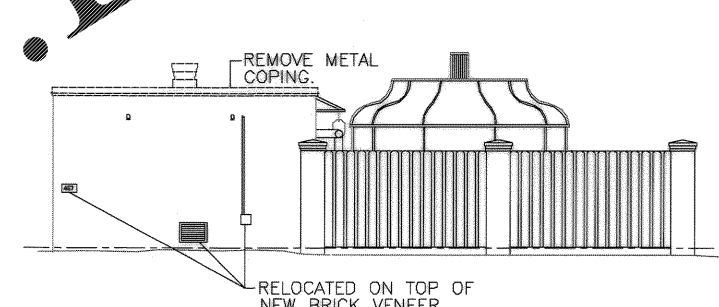
2 EAST ELEVATION
A-105 SCALE: 1/8"=1'-0"



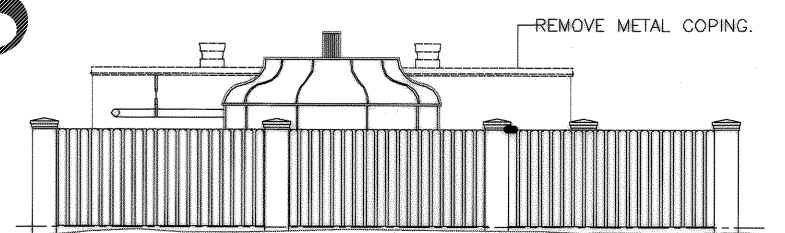
3 SOUTH ELEVATION
A-105 SCALE: 1/8"=1'-0"



4 WEST ELEVATION
A-105 SCALE: 1/8"=1'-0"



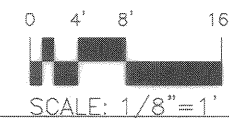
5 NORTH ELEVATION
A-105 SCALE: 1/8"=1'-0"



6 WEST ELEVATION
A-105 SCALE: 1/8"=1'-0"

NOTE:

1. THE CHILLER PLANT REPLACEMENT OPTION INCLUDES THE DEMOLITION OF THIS ENTIRE BUILDING, AND INCLUDES BUT IS NOT LIMITED TO THE DEMOLITION OF FENCING, CONCRETE PADS, AND MECHANICAL EQUIPMENT.
2. NOTES ON THE DRAWINGS ABOVE ARE PART OF THE BASE BID.
3. LEAD PAINT IS PRESENT ON CMU WALLS. SEE SPECIFICATION SECTION 00300. CONTRACTOR SHALL COMPLY WITH 29CFR-1926.26 AND SUBMIT APPROVAL FOR DISPOSAL AT APPROPRIATE LANDFILL.



Rev.	Date	Appr.	Prep. By	DRN	CHK	DATE	DESCRIPTION
1	5/14/04	J.C.	J.C.	J.C.	J.C.	5/14/04	AS-BUILT DRWG. NO CORRECTIONS
DRAWING REVISIONS							
Description							
Submitted by (FIRM MEMBER-TITLE)							
DATE							
WE. PAGES							
TECHNICAL BRANCH							
FTE							

CHARLESTON AIR FORCE BASE
CHARLESTON, SOUTH CAROLINA
DINING FACILITY
EXISTING CHILLER BUILDING-DEMOLITION
APPROVED *R.D. Mans* DATE 5/14/04 ETD FOR COMMANDER, NAVFAC

Naval Facilities Engineering Command
Southern Division
Charleston, South Carolina



RECORD DRAWING DATE	9/27/04
CODE T.O. NO.	90091
DRAWING SIZE	D
SPEC. NO.	06-98-0939
CONSTR. CNTR. NO.	N62467-98-C-0939
NAVFAC DRAWING NO.	5357883
SHEET	58 OF 194
A-105	

Order Plans @