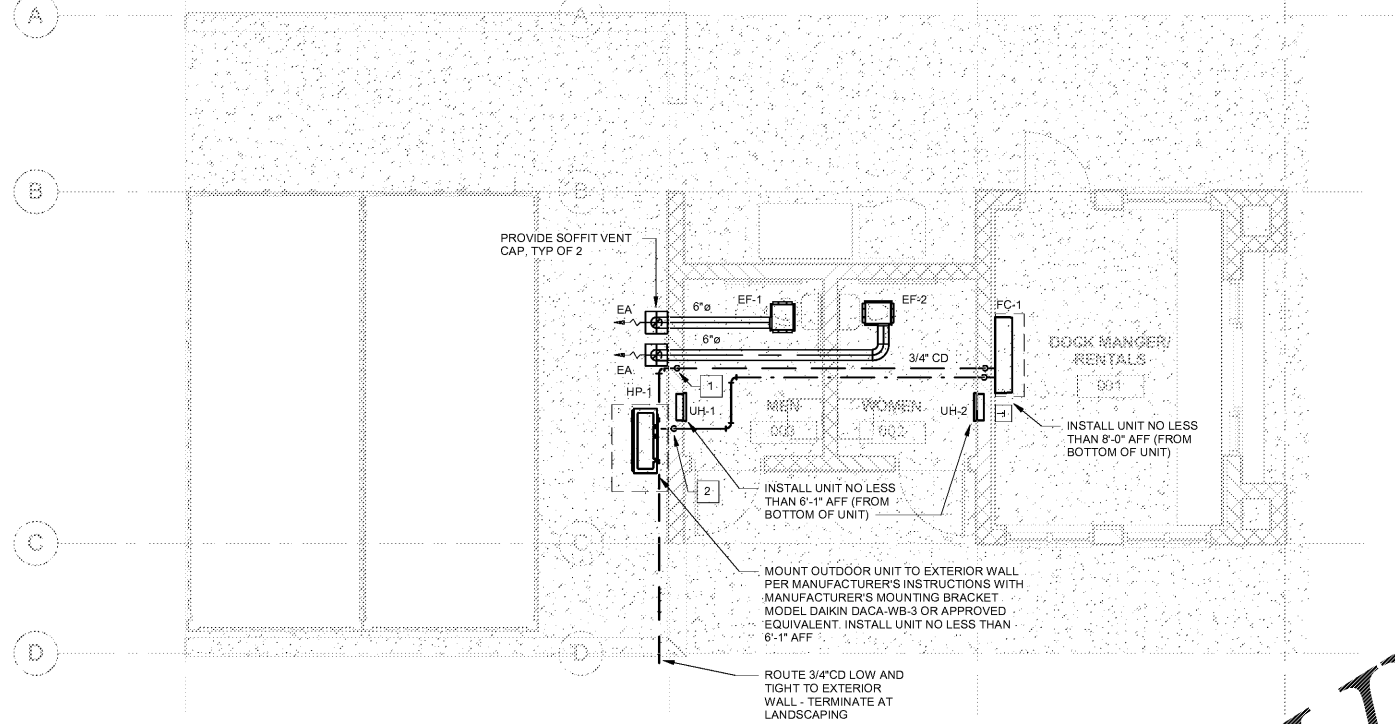


ALL DESIGNS, DRAWINGS AND SPECIFICATIONS DEPICTED ON THIS SHEET ARE PROPERTY OF COAST ARCHITECTS, INC. COPYRIGHT © 2018 ANY UNAUTHORIZED USE OR REPRODUCTION IS SUBJECT TO LEGAL PROSECUTION. POSSESSION IN ANY FORM CONSTITUTES ACCEPTANCE OF THESE CONDITIONS.



1 MECHANICAL PLAN
1/4" = 1'-0"

MECHANICAL LEGEND

- ø DIAMETER
- AFF ABOVE FINISHED FLOOR
- CFM CUBIC FEET PER MINUTE
- EA EXHAUST AIR
- EF EXHAUST FAN
- FC FAN COIL UNIT
- HP HEAT PUMP
- UH UNIT HEATER
- CONDENSATE LINE, CD
- - - REFRIGERANT LINES, R
- REMOTE TEMPERATURE SENSOR TO THE CENTRAL BAS
- DIRECTION OF AIRFLOW

MECHANICAL GENERAL NOTES

- G1 PROVIDE LABOR, MATERIALS AND EQUIPMENT TO COMPLETE THE HVAC WORK INDICATED ON THE DRAWINGS AND AS REQUIRED BY LOCAL CODES AND ORDINANCES.
- G2 FURNISH AND INSTALL HEATING AND COOLING UNITS AS INDICATED ON THE DRAWINGS.
- G3 FABRICATE AND INSTALL DUCTWORK IN ACCORDANCE WITH SMACNA STANDARDS.
- G4 INSTALL CONTROL SYSTEM COMPLETE WITH WIRING, COMPONENTS, ETC., TO PERFORM CONTROL SEQUENCE AS PER FACTORY RECOMMENDATIONS.
- G5 INSTALL AND CONNECT THE HVAC SYSTEM IN STRICT ACCORDANCE WITH LOCAL CODES, ORDINANCES AND THE LATEST EDITION OF THE SOUTH CAROLINA BUILDING CODE AND SOUTH CAROLINA MECHANICAL CODE.
- G6 ADJUST CONTROLS AND EQUIPMENT FOR PROPER OPERATION. LUBRICATE AND CLEAN EQUIPMENT PRIOR TO ACCEPTANCE OF BUILDING BY OWNER.
- G7 COORDINATE WORK WITH THE ELECTRICAL INSTALLER.
- G8 FURNISH THE OWNER WITH OPERATING MANUALS AND MAINTENANCE INSTRUCTIONS FOR EQUIPMENT INSTALLED.
- G9 GUARANTEE WORK INSTALLED UNDER THE CONTRACT TO BE FREE FROM DEFECTIVE WORKMANSHIP AND MATERIALS, USUAL WEAR EXPECTED. SHOULD SUCH DEFECTS DEVELOP WITHIN A PERIOD OF ONE YEAR AFTER ACCEPTANCE OF THE BUILDING BY THE OWNER, REPAIR AND/OR REPLACE DEFECTIVE ITEMS AND DAMAGE, RESULTING FROM FAILURE OF THESE ITEMS, AT NO EXPENSE WHATSOEVER TO THE OWNER. PROVIDE FIVE (5) YEAR COMPRESSOR WARRANTY.

DRAWING NOTES

- 1 3/4" CD DOWN IN WALL TO DISCHARGE LOW TO LANDSCAPING. INSULATE ENTIRE LENGTH WITH 3/4" CLOSED CELL ELASTOMERIC PIPE INSULATION. SEAL WALL PENETRATION WATER TIGHT.
- 2 A REFRIGERANT LIQUID AND SUCTION LINE IS REQUIRED. ONLY ONE REFRIGERANT LINE IS SHOWN FOR CLARITY.

SPLIT SYSTEM HEAT PUMP SCHEDULE														
SYMBOL	SYSTEM TYPE	INDOOR SECTION			COOLING CAPACITY @95°F (MBTUH)			HEATING SECTION		SYS. VOLTS	MCA	MOCP	FILTER	DESIGN BASIS
		TOTAL CFM	AIR ENTR.	E.S.P. I.W.G.	TOTAL	SENS.	EER	TYPE	CAP.					
FC-1	WALL MOUNTED	417	75.0DB/64.0WB	-	9.0	-	-	R410	9.0 MBH	208/1/60	0.2	-	WASHABLE	DAIKIN FTX09NMVJU
HP-1	OUTDOOR UNIT	-	-	-	9.0	8.2	12.5	R410	9.0 MBH	208/1/60	12.1	-	-	DAIKIN RX09NMVJU

- NOTES:**
- UNIT SHALL BE CONTROLLED BY FIELD MOUNTED DDC CONTROLLER THROUGH CENTRAL BUILDING AUTOMATION SYSTEM (BAS).
 - PROVIDE SHOP DRAWINGS PREPARED BY MANUFACTURER TO INCLUDE CONTROL WIRING DIAGRAM, POWER WIRING DIAGRAM AND REFRIGERANT PIPING DIAGRAM. DIAGRAMS SHALL INCLUDE SIZING AND ESTIMATED LENGTHS.
 - PROVIDE FAN COIL UNIT WITH AN INTEGRAL CONDENSATE PUMP.

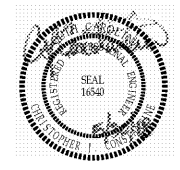
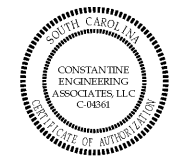
EXHAUST FAN SCHEDULE									
SYMBOL	MFR	MODEL	CFM	WATT (W)	DRIVE	FAN RPM	MOTOR WATT (W)	VOLTS/PHASE	CONTROL
EF-1,2	GREENHECK	SP-B80	75	0.125	DIRECT	900	19 W	115-1	LIGHT SWITCH

- NOTES:**
- PROVIDE EXHAUST FANS WITH AN INTEGRAL DISCONNECT SWITCH.

UNIT HEATER SCHEDULE									
SYMBOL	TYPE	CFM	KW	BTUH	TEMP RISE	FAN TYPE	AMPS	VOLTS/PHASE/HZ	DESIGN BASIS
UH-1,2	ELECTRIC	100	1.5	5,120	47°F	CENTRIFUGAL	12.5	115/1/60	Q-MARK AWH3150F

- NOTES:**
- PROVIDE WALL MOUNTING BRACKET AND REMOTE THERMOSTAT.
 - PROVIDE ALL UNIT HEATERS WITH AN INTEGRAL DISCONNECT SWITCH.

coast architects
671 St. Andrews Blvd., Charleston, SC 29407
Phone: 843.763.7064 Fax: 843.763.7061
www.coastarchitects.net



CONSTANTINE ENGINEERING ASSOCIATES, LLC
1438 Savannah Hwy., Charleston, SC 29407
Phone: 843.629.7979, Fax: 843.629.9811

BOATING CENTER REDEVELOPMENT - SWAIN BOATING CENTER
H09-9617-PG-C
CITADEL
11 HAMMOND AVENUE
CHARLESTON, SC

Revisions	
Rev. No.	Rev. Date

DRAWN BY: TJR
CHECKED BY: CJC
DATE: 06.01.2018

COAST PROJECT NO: 17-069

MECHANICAL PLAN

3.M101

BID DOCUMENTS