

ALL DESIGNS, DRAWINGS AND SPECIFICATIONS DEPICTED ON THIS SHEET ARE PROPERTY OF COAST ARCHITECTS, INC. COPYRIGHT © 5/30/2018 ANY UNAUTHORIZED USE OR REPRODUCTION IS SUBJECT TO LEGAL PROSECUTION. POSSESSION IN ANY FORM CONSTITUTES ACCEPTANCE OF THESE CONDITIONS.

H
G
F
E
D
C
B
A

Order Plans @ WWW.LDILINE.COM

PLUMBING FIXTURE SCHEDULE

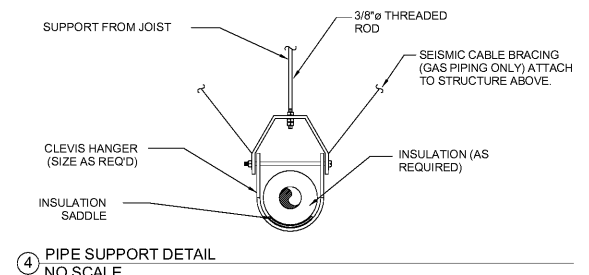
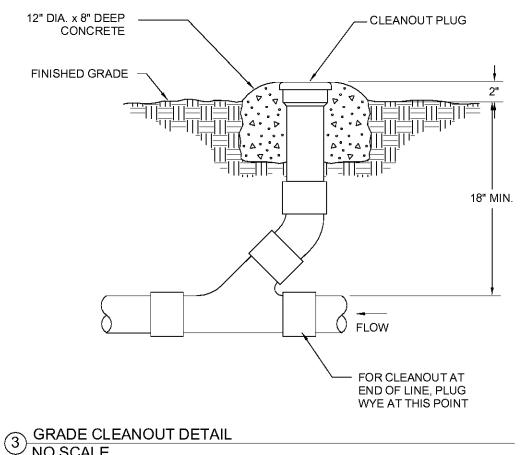
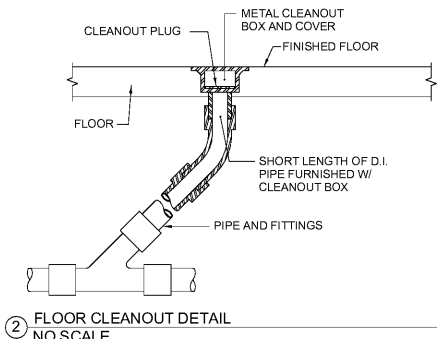
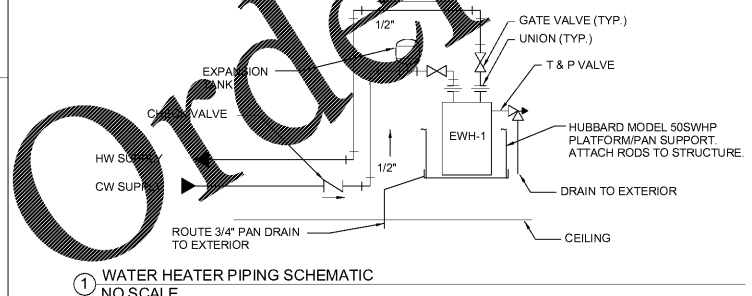
NOTE: MODELS SHOWN ARE BASIS OF DESIGN. EQUIVALENT PRODUCTS BY OTHER MANUFACTURER'S MAY BE ACCEPTED.

MARK	DESCRIPTION	MFR	MODEL	CW	HW	WASTE	VENT	NOTES
P1	ADA WATER CLOSET FLUSH VALVE	KOHLER	HIGHLINE K-4405	1"	-	3"	2"	1.28 GPF WC WITH BATTERY POWERED AUTOMATIC FLUSH VALVE, KOHLER MODEL K-10956-SV, AND K-4731-C SEAT
P2	ADA LAVATORY WALL HUNG	KOHLER	PINOIR K-2028	1/2"	1/2"	1 1/2"	1 1/2"	INCLUDE KOHLER CORALAIS K-15583 FAUCET
GCO	GRADE CLEANOUT	ZURN	Z-1400-NL	-	-	3"	-	
WH	FROST PROOF WALL HYDRANT	WATTS	LFFHB	3/4"	-	-	-	

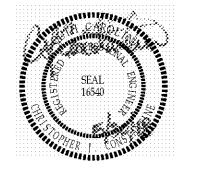
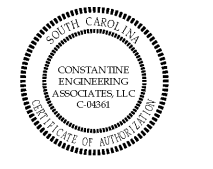
ELECTRIC WATER HEATER SCHEDULE

NOTE: MODELS SHOWN ARE BASIS OF DESIGN. EQUIVALENT PRODUCTS BY OTHER MANUFACTURER'S MAY BE ACCEPTED.

MARK	MFR	MODEL	VOLTS	PHASE	WATTS	RECOVERY @ 100' RISE	NOTES
EW-1	A.O. SMITH	DEL-6	120V	1	1500	6	1. INCLUDE DRAIN PAN, EXPANSION TANK, HW PIPE LOOP, T&P DRAIN AND AUTOMATIC CLOSURE VALVE IN THE EVENT OF TANK FAILURE



coast architects
671 St. Andrews Blvd Charleston, SC 29407
Phone: 843.763.7064 Fax: 843.763.7061
www.coastarchitects.net



CONSTANTINE ENGINEERING ASSOCIATES, LLC
1438 Savannah Hwy #111, Charleston, SC 29407
Phone: 843.629.7979, Fax: 843.624.9784

BOATING CENTER REDEVELOPMENT - SWAIN BOATING CENTER
H09-9617-PG-C

CITADEL
11 HAMMOND AVENUE
CHARLESTON, SC

Revisions

Rev. No.	Rev. Date

DRAWN BY: TJR
CHECKED BY: CJC
DATE: 06.01.2018
COAST PROJECT NO: 17-069

PLUMBING SCHEDULES & DETAILS
3.P201

BID DOCUMENTS