

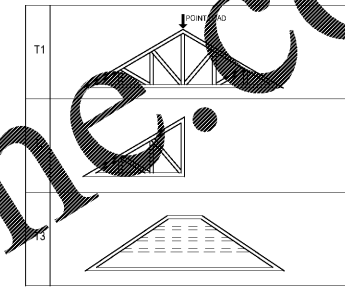
ALL DESIGNS, DRAWINGS AND SPECIFICATIONS DEPICTED ON THIS SHEET ARE PROPERTY OF COAST ARCHITECTS, INC. COPYRIGHT © 2018 ANY UNAUTHORIZED USE OR REPRODUCTION IS SUBJECT TO LEGAL PROSECUTION. POSSESSION IN ANY FORM CONSTITUTES ACCEPTANCE OF THESE CONDITIONS.

ROOF FRAMING PLAN NOTES

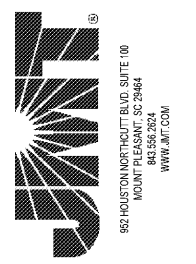
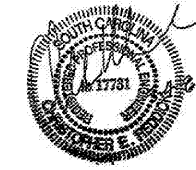
- : INDICATES THE DIRECTION THE DECK IS SPANNING.
- T/S : INDICATES TOP OF STEEL BEAM REFERENCED FROM ELEVATION [0'-0"]
- NOTE 1: SEE TYPICAL DETAILS ON SHEETS 0.S501 THROUGH 0.S505

**DOCK HOUSE - BUILDING 3
TRUSS LEGEND**

- NOTE 1: TRUSSES DESIGNED BY OTHERS. ATTACH EACH VALLEY TRUSS TO THE COMMON TRUSSES BELOW USING (1) SIMPSON VTC2 VALLEY TRUSS CLIP AT EACH END OF EACH VALLEY TRUSS.
- NOTE 2: TRUSS BEARING ELEVATIONS TO BE DETERMINED BY ARCHITECT AND TRUSS DESIGNER.



coast architects
671 St. Andrews Blvd., Charleston, SC 29407
Phone: 843.763.7064 Fax: 843.763.7061
www.coastarchitects.net



**BOATING CENTER REDEVELOPMENT -
SWAIN BOATING CENTER**

CITADEL
11 HAMMOND AVENUE
THE MILITARY COLLEGE OF SOUTH CAROLINA

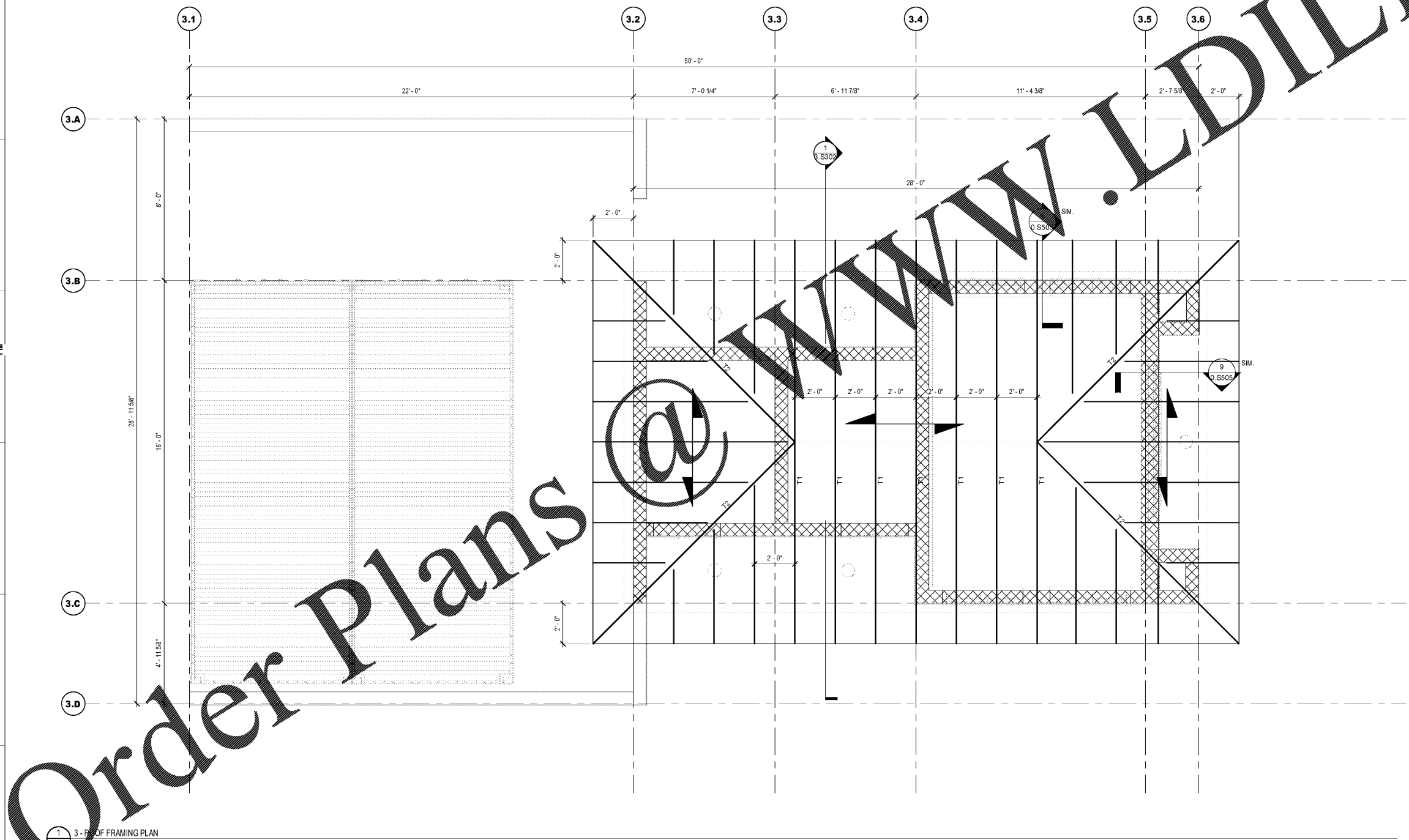
Revisions	
Rev. No.	Rev. Date

DRAWN BY: BE
CHECKED BY: CR
DATE: 06.01.2018
COAST PROJECT NO: 1722.00

**ROOF FRAMING
PLAN**

3.S103

BID DOCUMENTS



Order Plans

1 3-FR OF FRAMING PLAN
3.S103 35' x 49'