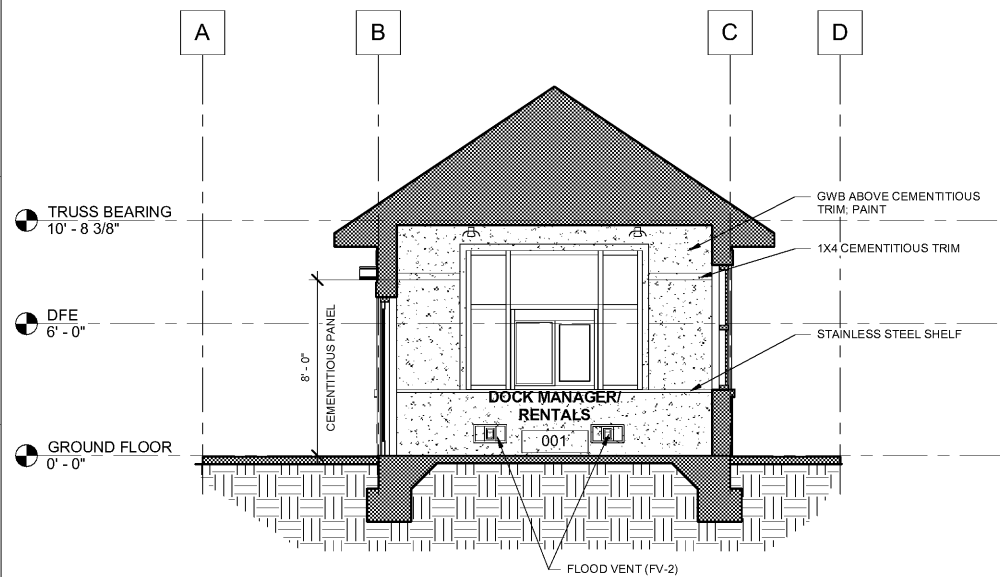
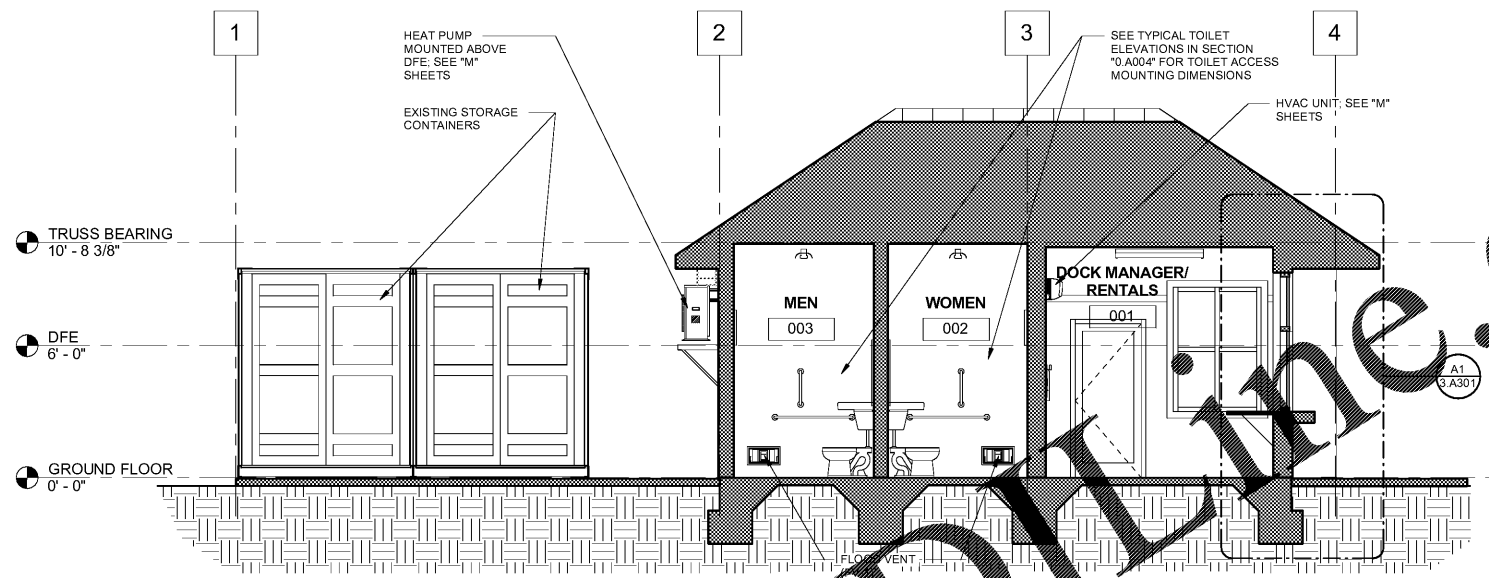


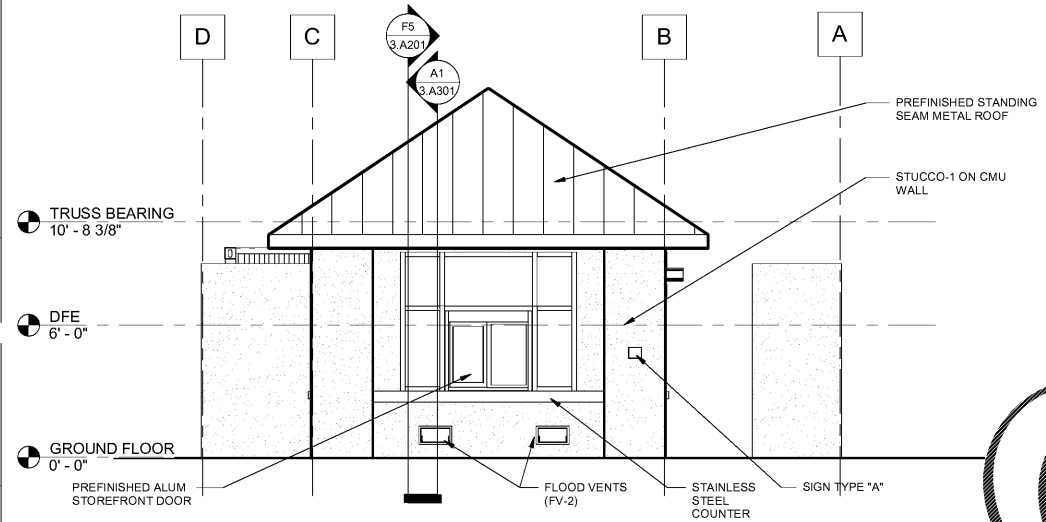
ALL DESIGNS, DRAWINGS AND SPECIFICATIONS DEPICTED ON THIS SHEET ARE PROPERTY OF COAST ARCHITECTS, INC. COPYRIGHT © 2018 ANY UNAUTHORIZED USE OR REPRODUCTION IS SUBJECT TO LEGAL PROSECUTION. POSSESSION IN ANY FORM CONSTITUTES ACCEPTANCE OF THESE CONDITIONS.



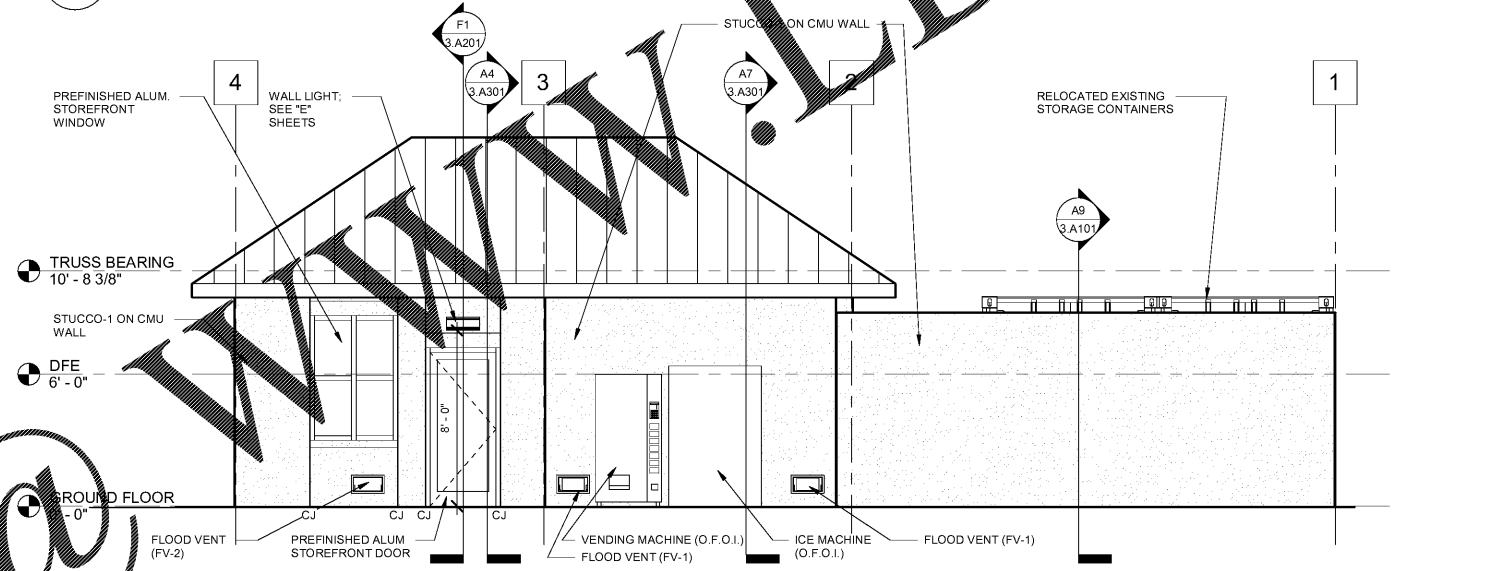
F1 CROSS SECTION
3.A201 SCALE: 1/4" = 1'-0"



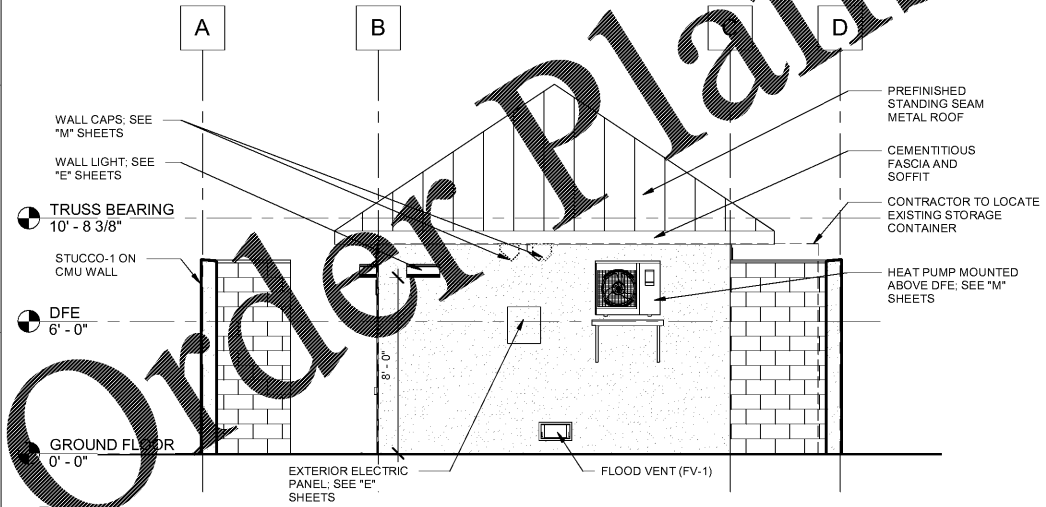
F5 LONGITUDINAL SECTION
3.A201 SCALE: 1/4" = 1'-0"



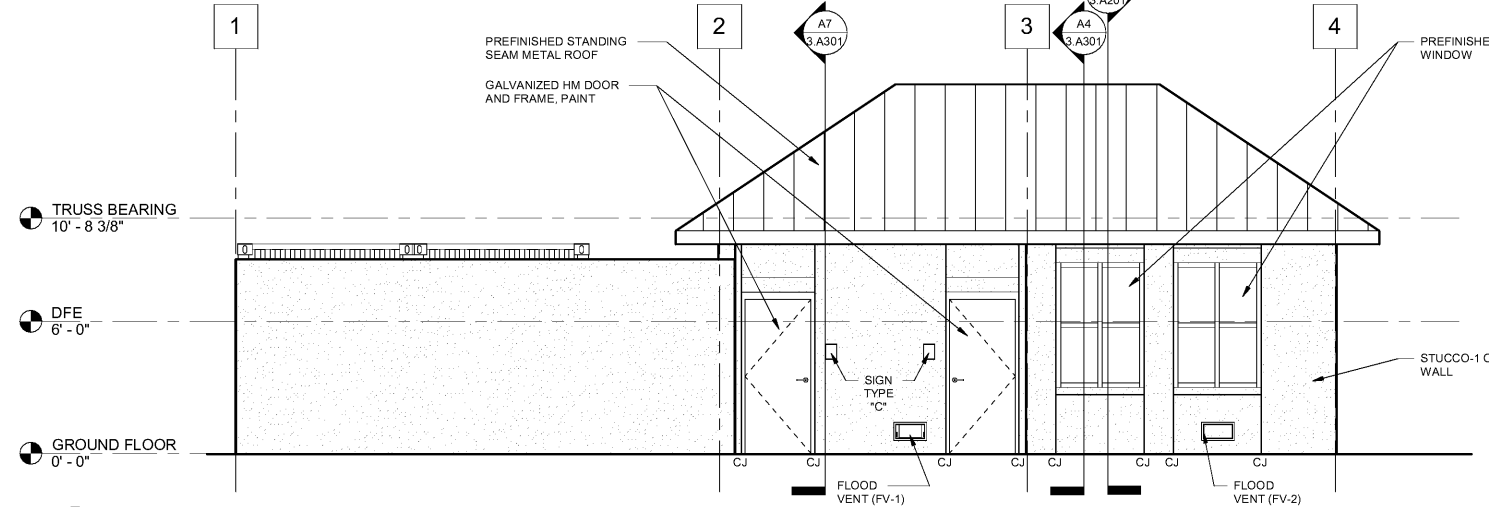
C1 DOCK HOUSE SOUTH ELEVATION
3.A201 SCALE: 1/4" = 1'-0"



C5 DOCK HOUSE EAST ELEVATION
3.A201 SCALE: 1/4" = 1'-0"



A1 DOCK HOUSE NORTH ELEVATION
3.A201 SCALE: 1/4" = 1'-0"

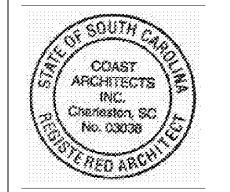


A5 DOCK HOUSE WEST ELEVATION
3.A201 SCALE: 1/4" = 1'-0"

Order Plans

WWW.DLINE.CO

coast architects
671 St. Andrews Blvd., Charleston, SC 29407
Phone: 843.763.7064 Fax: 843.763.7061
www.coastarchitects.net



BOATING CENTER REDEVELOPMENT - SWAIN BOATING CENTER
H09-9617-PG-C
CITADEL
11 HAMMOND AVENUE
CHARLESTON, SC

Revisions	
Rev. No.	Rev. Date

DRAWN BY: LWM
CHECKED BY: FAM
DATE: 06.01.2018
COAST PROJECT NO: 1722.00
DOCK HOUSE EXT. ELEVATIONS & BUILDING SECTIONS
3.A201

BID DOCUMENTS