

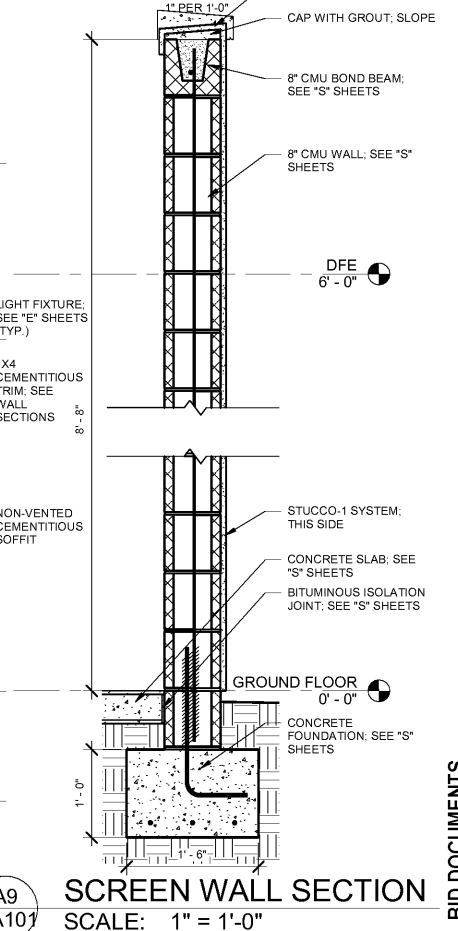
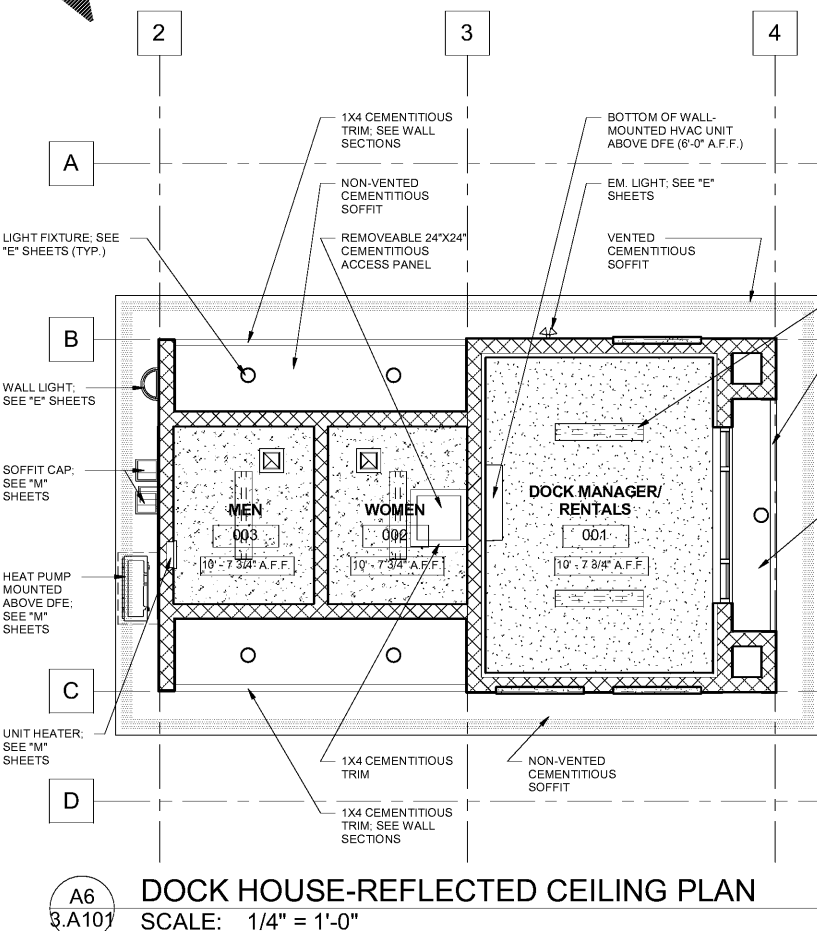
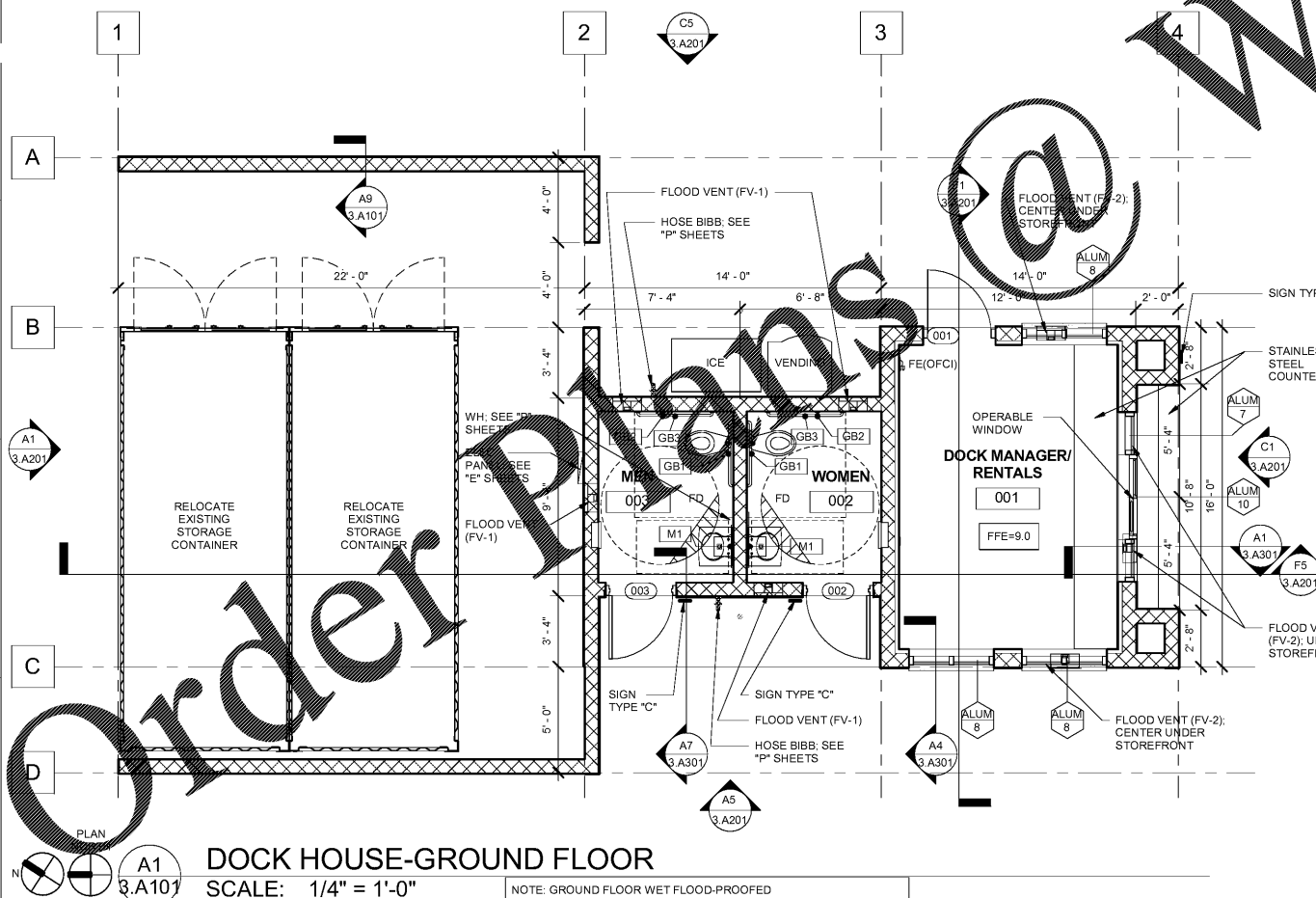
ALL DESIGNS, DRAWINGS AND SPECIFICATIONS DEPICTED ON THIS SHEET ARE PROPERTY OF COAST ARCHITECTS, INC. COPYRIGHT © 2018 ANY UNAUTHORIZED USE OR REPRODUCTION IS SUBJECT TO LEGAL PROSECUTION. POSSESSION IN ANY FORM CONSTITUTES ACCEPTANCE OF THESE CONDITIONS. 10:37:31 AM

BID ALT. NO. 3

1. SEE GENERAL NOTES AND LEGEND ON SHEET 0.A001
2. SEE RCP NOTES ON SHEET 1.A103
3. SEE SHEET 0.A401 FOR DOOR SCHEDULE
4. SEE SHEET 0.A004 FOR SIGN TYPES
5. THE DOCKHOUSE, SHOWN ON ALL SHEETS WITH THE PREFIX 3 (I.E. 3.A101)
6. THE GENERAL CONTRACTOR AND SUBCONTRACTORS SHALL PRICE THE WORK SHOWN IN THIS BID ALTERNATE AS A COMPLETE AND SEPARATE SUM TO BE SHOWN ON THE BID FORM
7. THE BID ALTERNATE WILL BE ACCEPTED OR REJECTED BY THE OWNER IN ACCORDANCE WITH SOUTH CAROLINA STATE LAW.

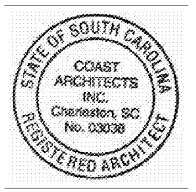
ROOM FINISH SCHEDULE

ROOM NUMBER	ROOM NAME	FLOOR FINISH	BASE	N PAINT	S PAINT	E PAINT	W PAINT	CEILING FINISH	CEILING HT.	COMMENTS
001	DOCK MANAGER / RENTALS	CONC.	CEM-	PT-2	PT-2	PT-2	PT-2	GWB	10' - 7 3/4"	
002	WOMEN	CONC.	--	PT-2	PT-2	PT-2	PT-2	CEM-2	10' - 7 3/4"	
003	MEN	CONC.	--	PT-2	PT-2	PT-2	PT-2	CEM-2	10' - 7 3/4"	



WWW.LDILine.com

coast architects
671 St. Andrews Blvd Charleston, SC 29407
Phone: 843.763.7064 Fax: 843.763.7061
www.coastarchitects.net



BOATING CENTER REDEVELOPMENT - SWAIN BOATING CENTER
H09-9617-PG-C
CITADEL 11 HAMMOND AVENUE CHARLESTON, SC
THE REGISTERED CONTRACTOR OF SOUTH CAROLINA

Revisions	
Rev. No.	Rev. Date

DRAWN BY: LWM
CHECKED BY: FAM
DATE: 06.01.2018

COAST PROJECT NO: 1722.00

DOCK HOUSE FLOOR PLAN & RCP

3.A101

BID DOCUMENTS