

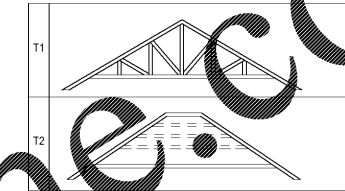
ALL DESIGNS, DRAWINGS AND SPECIFICATIONS DEPICTED ON THIS SHEET ARE PROPERTY OF COAST ARCHITECTS, INC. COPYRIGHT © 2018 ANY UNAUTHORIZED USE OR REPRODUCTION IS SUBJECT TO LEGAL PROSECUTION. POSSESSION IN ANY FORM CONSTITUTES ACCEPTANCE OF THESE CONDITIONS.

ROOF FRAMING PLAN NOTES

- : INDICATES THE DIRECTION THE DECK IS SPANNING.
- T/S : INDICATES TOP OF STEEL BEAM REFERENCED FROM ELEVATION [0'-0"]
- NOTE 1: SEE TYPICAL DETAILS ON SHEETS 0.S501 THROUGH 0.S505
- NOTE 2: ROOF DECK TO BE 1.5" TYPE B 22 GAUGE

BUILDING 2 - PAVILION TRUSS LEGEND

- NOTE 1: TRUSSES DESIGNED BY TRUSS MANUFACTURER. ATTACH EACH VALLEY TRUSS TO THE COMMON TRUSSES BELOW USING (1) SIMPSON VTC2 VALLEY TRUSS CLIP AT EACH END OF EACH VALLEY TRUSS.
- NOTE 2: TRUSS BEARING ELEVATIONS TO BE DETERMINED BY ARCHITECT AND TRUSS DESIGNER.



coast architects
 671 St. Andrews Blvd Charleston, SC 29407
 Phone: 843.763.7064 Fax: 843.763.7061
 www.coastarchitects.net

JOHNSON, MIRMIRAN & THOMPSON, INC.
 No. 3943
 STATE OF SOUTH CAROLINA
 ARCHITECTS

JOHNSON, MIRMIRAN & THOMPSON, INC.
 No. 17731
 STATE OF SOUTH CAROLINA
 REGISTERED PROFESSIONAL ENGINEER
 CLOVER F. REDDY

JMT
 650 HOUSTON MARSHALL BLVD, SUITE 100
 MOUNT PLEASANT, SC 29544
 843.556.2624
 WWW.JMT.COM

BOATING CENTER REDEVELOPMENT - SWAIN BOATING CENTER
 11 HAMMOND AVENUE
CITADEL
 THE MILITARY COLLEGE OF SOUTH CAROLINA

Revisions	
Rev. No.	Rev. Date

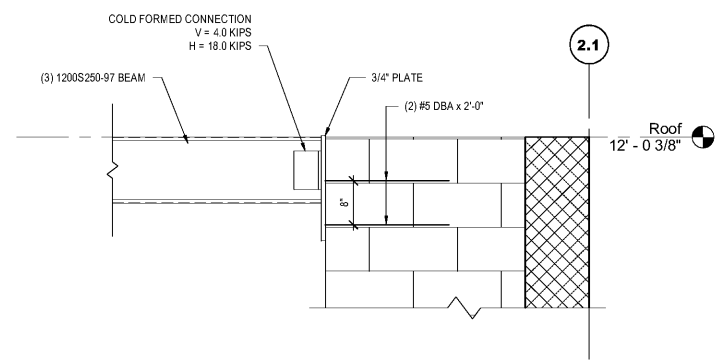
DRAWN BY: BE
 CHECKED BY: CR
 DATE: 06.01.2018

COAST PROJECT NO: 1722.00

PAVILION ROOF FRAMING PLAN

2.S102

BID DOCUMENTS



2 C.F. BEAM BEARING ON CMU
 2.S102 3/4" = 1'-0"

Order Plans @ WWW.LDILine.com

WWW.LDILine.com