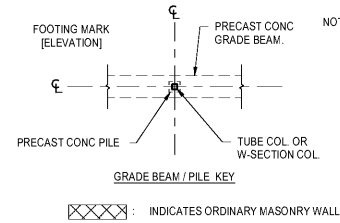


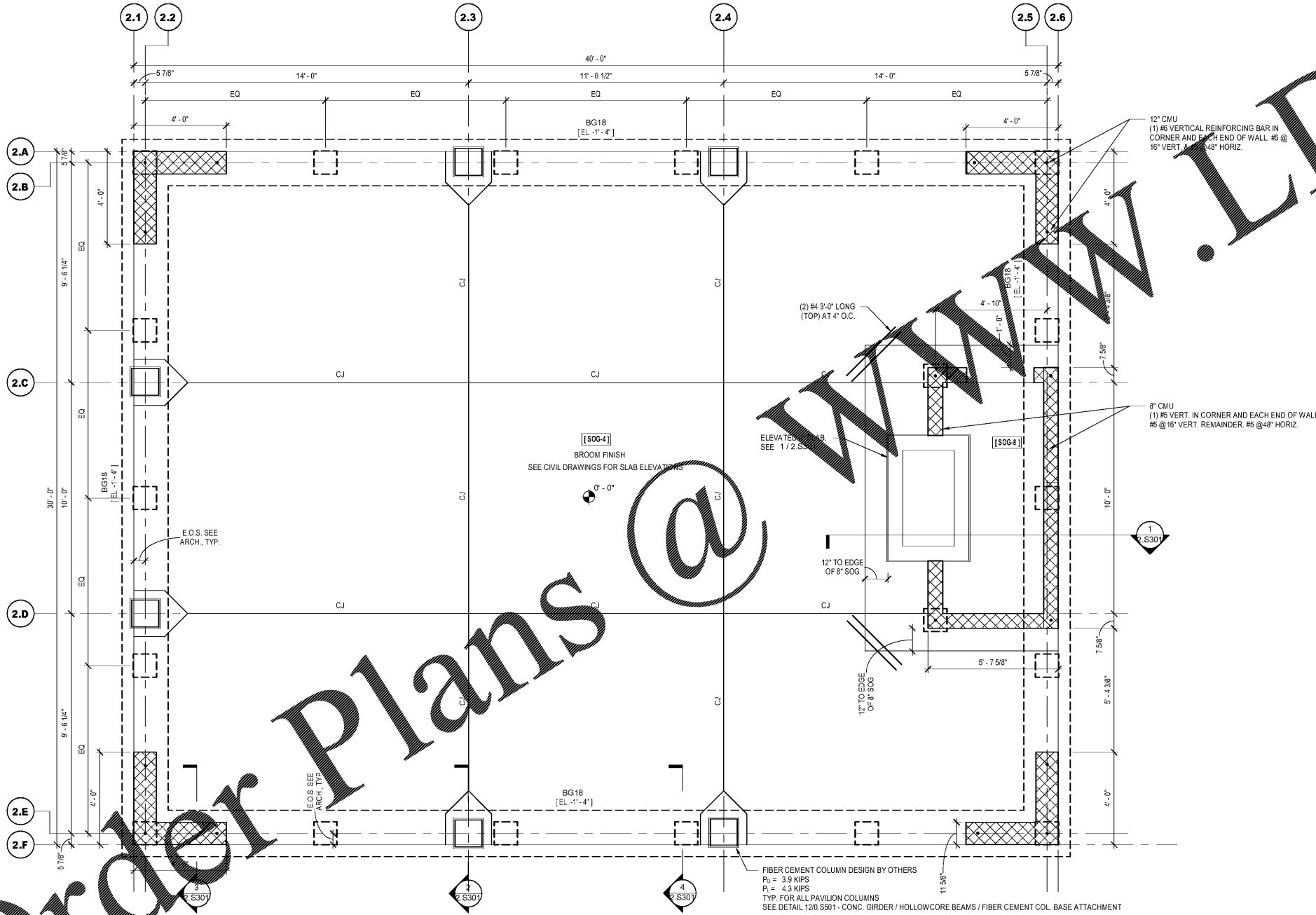
ALL DESIGNS, DRAWINGS AND SPECIFICATIONS DEPICTED ON THIS SHEET ARE PROPERTY OF COAST ARCHITECTS, INC. COPYRIGHT © 2018 ANY UNAUTHORIZED USE OR REPRODUCTION IS SUBJECT TO LEGAL PROSECUTION. POSSESSION IN ANY FORM CONSTITUTES ACCEPTANCE OF THESE CONDITIONS.

SLAB AND DECK SCHEDULE	
MARK	DESCRIPTION
SOG-4	4" CONCRETE SLAB ON GRADE. REINFORCE WITH WWF 6x6-W1 4xW1.4 IN FLAT SHEETS. FINISH FLOOR SLAB ELEVATION SEE CIVIL FOR DATUM
SOG-8	8" CONCRETE SLAB ON GRADE. REINFORCE WITH #4 @ 12" O.C. TOP & BOTTOM. FINISH FLOOR SLAB ELEVATION SEE CIVIL FOR DATUM

**FOUNDATION NOTES**

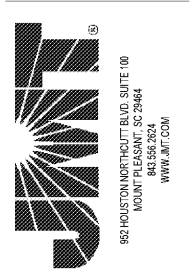
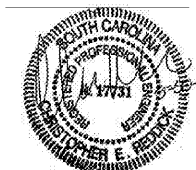


NOTE 1: CONTRACTOR SHALL COORDINATE EXACT LOCATIONS OF ALL FLOOR JOINTS WITH THE ARCHITECTURAL JOINTS IN FINISHES. ALL FLOOR JOINTS SHOULD COINCIDE DIRECTLY UNDER A JOINT IN THE ARCHITECTURAL FINISH ABOVE. SEE ARCHITECTURAL DRAWINGS.



Order Plans @ WWW.LDILine.com

**coast architects**  
 671 St. Andrews Blvd Charleston, SC 29407  
 Phone: 843.763.7064 Fax: 843.763.7061  
 www.coastarchitects.net



**BOATING CENTER REDEVELOPMENT - SWAIN BOATING CENTER**  
 11 HAMMOND AVENUE  
**CITADEL**  
 THE MILITARY COLLEGE OF SOUTH CAROLINA

Revisions	
Rev. No.	Rev. Date

DRAWN BY: BE  
 CHECKED BY: CR  
 DATE: 06.01.2018

COAST PROJECT NO: 1722.00

**PAVILION FOUNDATION PLAN**

**2.S101**

BID DOCUMENTS