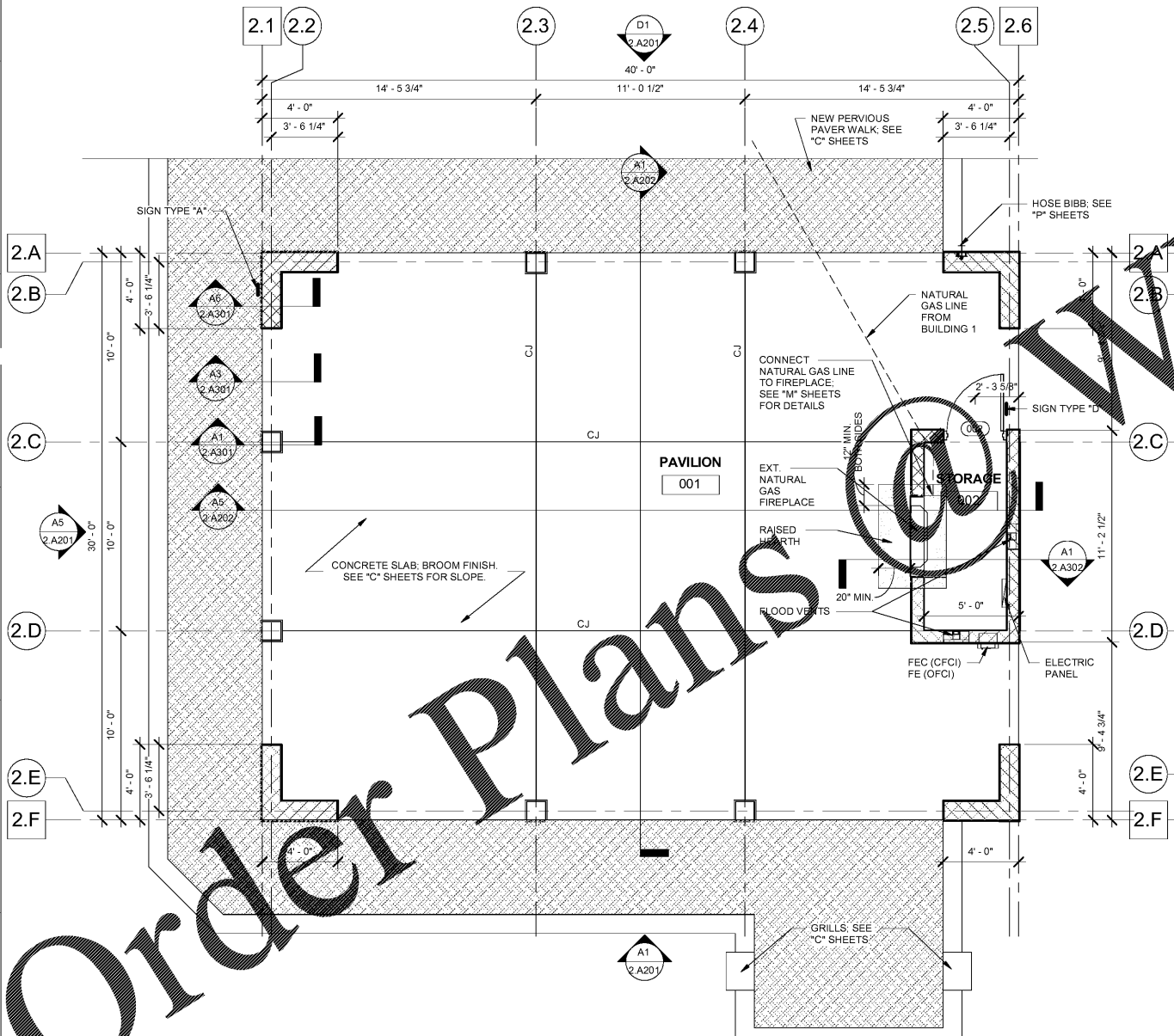


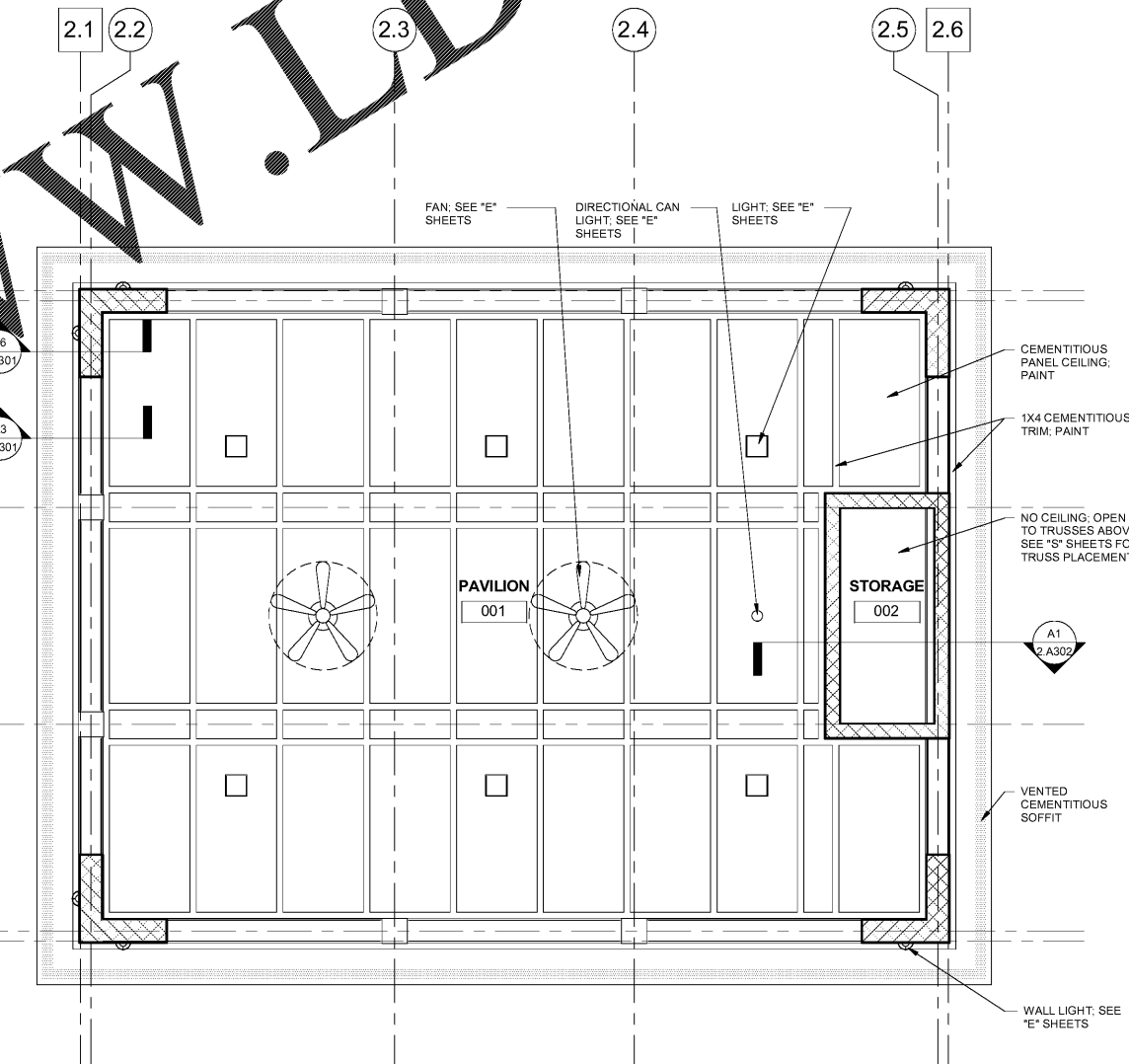
ALL DESIGNS, DRAWINGS AND SPECIFICATIONS DEPICTED ON THIS SHEET ARE PROPERTY OF COAST ARCHITECTS, INC. COPYRIGHT © 2018 ANY UNAUTHORIZED USE OR REPRODUCTION IS SUBJECT TO LEGAL PROSECUTION. POSSESSION IN ANY FORM CONSTITUTES ACCEPTANCE OF THESE CONDITIONS.

BID ALT. NO. 2

1. SEE GENERAL NOTES AND LEGEND ON SHEET 0.A001
2. SEE RCP NOTES ON SHEET 1.A103
3. SEE SHEET 0.A401 FOR DOOR SCHEDULE
4. SEE SHEET 0.A404 FOR SIGN TYPES
5. THE PAVILION, SHOWN ON ALL SHEETS WITH THE PREFIX 2 (I.E. 2.A101)
6. THE GENERAL CONTRACTOR AND SUBCONTRACTORS SHALL PRICE THE WORK SHOWN IN THIS BID ALTERNATE AS A COMPLETE AND SEPARATE SUM TO BE SHOWN ON THE BID FORM
7. THE BID ALTERNATE WILL BE ACCEPTED OR REJECTED BY THE OWNER IN ACCORDANCE WITH SOUTH CAROLINA STATE LAW.



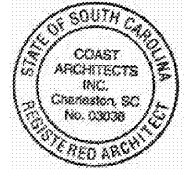
2.A101 PAVILION GROUND FLOOR PLAN
SCALE: 1/4" = 1'-0"



2.A101 PAVILION REFLECTED CEILING PLAN
SCALE: 1/4" = 1'-0"

Order Plans

WWW.LDILine.com



BOATING CENTER REDEVELOPMENT - SWAIN BOATING CENTER
H09-9617-PG-C

CITADEL 11 HAMMOND AVENUE
CHARLESTON, SC

Revisions		
Rev. No.	Rev. Date	

DRAWN BY: LWM
CHECKED BY: FAM
DATE: 06.01.2018

COAST PROJECT NO: 1722.00

PAVILION FLOOR PLAN & RCP

2.A101

BID DOCUMENTS