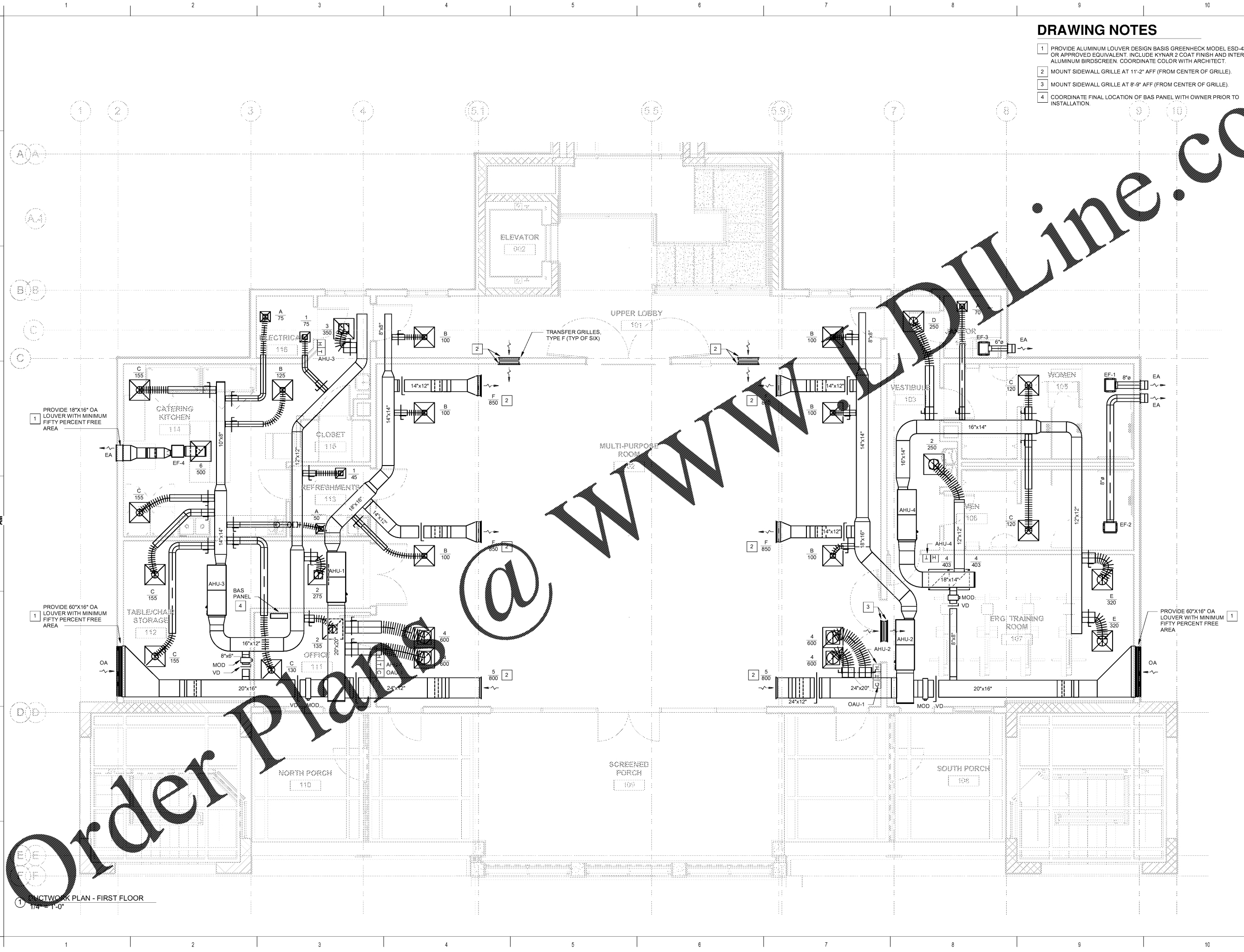


ALL DESIGNS, DRAWINGS AND SPECIFICATIONS DEPICTED ON THIS SHEET ARE PROPERTY OF COAST ARCHITECTS, INC. COPYRIGHT © 2018 ANY UNAUTHORIZED USE OR REPRODUCTION IS SUBJECT TO LEGAL PROSECUTION. POSSESSION IN ANY FORM CONSTITUTES ACCEPTANCE OF THESE CONDITIONS.

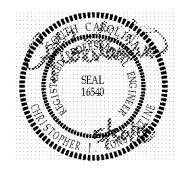


DRAWING NOTES

- 1 PROVIDE ALUMINUM LOUVER DESIGN BASIS GREENHECK MODEL ESD-435X OR APPROVED EQUIVALENT. INCLUDE KYNAR 2 COAT FINISH AND INTERNAL ALUMINUM BIRDSCREEN. COORDINATE COLOR WITH ARCHITECT.
- 2 MOUNT SIDEWALL GRILLE AT 11'-2" AFF (FROM CENTER OF GRILLE).
- 3 MOUNT SIDEWALL GRILLE AT 8'-9" AFF (FROM CENTER OF GRILLE).
- 4 COORDINATE FINAL LOCATION OF BAS PANEL WITH OWNER PRIOR TO INSTALLATION.

MECHANICAL DUCTWORK PLAN - FIRST FLOOR
174-1-0

coast architects
671 St. Andrews Blvd., Charleston, SC 29407
Phone: 843.763.7064 Fax: 843.763.7061
www.coastarchitects.net



CONSTANTINE ENGINEERING ASSOCIATES, LLC
1438 Savannah Hwy., Suite 100, Charleston, SC 29407
Phone: 843.529.7979, Fax: 843.529.9881

BOATING CENTER REDEVELOPMENT - SWAIN BOATING CENTER
H09-9617-PG-C
CITADEL 11 HAMMOND AVENUE
CHARLESTON, SC
THE MILITARY COLLEGE OF SOUTH CAROLINA

Revisions		
Rev. No.	Rev. Date	

DRAWN BY: TJR
CHECKED BY: CJC
DATE: 06.01.2018
COAST PROJECT NO: 17-069

MECHANICAL DUCTWORK PLAN

BID DOCUMENTS

1.M102