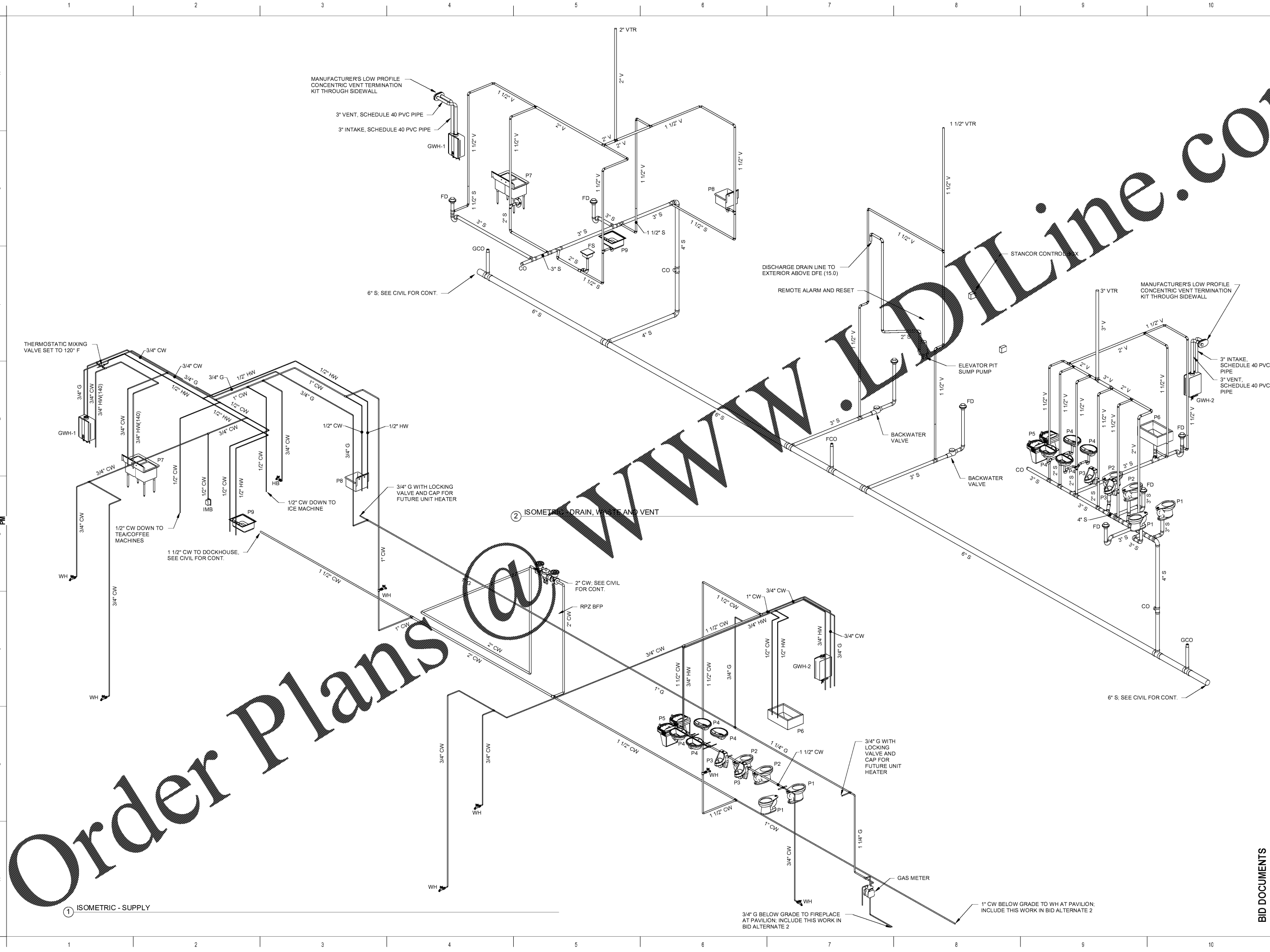


ALL DESIGNS, DRAWINGS AND SPECIFICATIONS DEPICTED ON THIS SHEET ARE PROPERTY OF COAST ARCHITECTS, INC. COPYRIGHT © 2018 ANY UNAUTHORIZED USE OR REPRODUCTION IS SUBJECT TO LEGAL PROSECUTION. POSSESSION IN ANY FORM CONSTITUTES ACCEPTANCE OF THESE CONDITIONS.

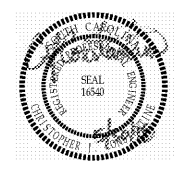


Order Plans

① ISOMETRIC - SUPPLY

② ISOMETRIC DRAIN, WASTE AND VENT

coast architects
 671 St. Andrews Blvd., Charleston, SC 29407
 Phone: 843.763.7064 Fax: 843.763.7061
 www.coastarchitects.net



CONSTANTINE ENGINEERING ASSOCIATES, LLC
 1428 Savannah Hwy., Charleston, SC 29407
 Phone: 843.629.7979, Fax: 843.624.9811

BOATING CENTER REDEVELOPMENT - SWAIN BOATING CENTER
 H09-9617-PG-C

CITADEL
 THE MILITARY COLLEGE OF SOUTH CAROLINA
 11 HAMMOND AVENUE
 CHARLESTON, SC

Revisions		
Rev. No.	Rev. Date	

DRAWN BY: DDF
 CHECKED BY: CJC
 DATE: 06.01.2018

COAST PROJECT NO: 17-069

PLUMBING ISOMETRICS

1.P301

BID DOCUMENTS