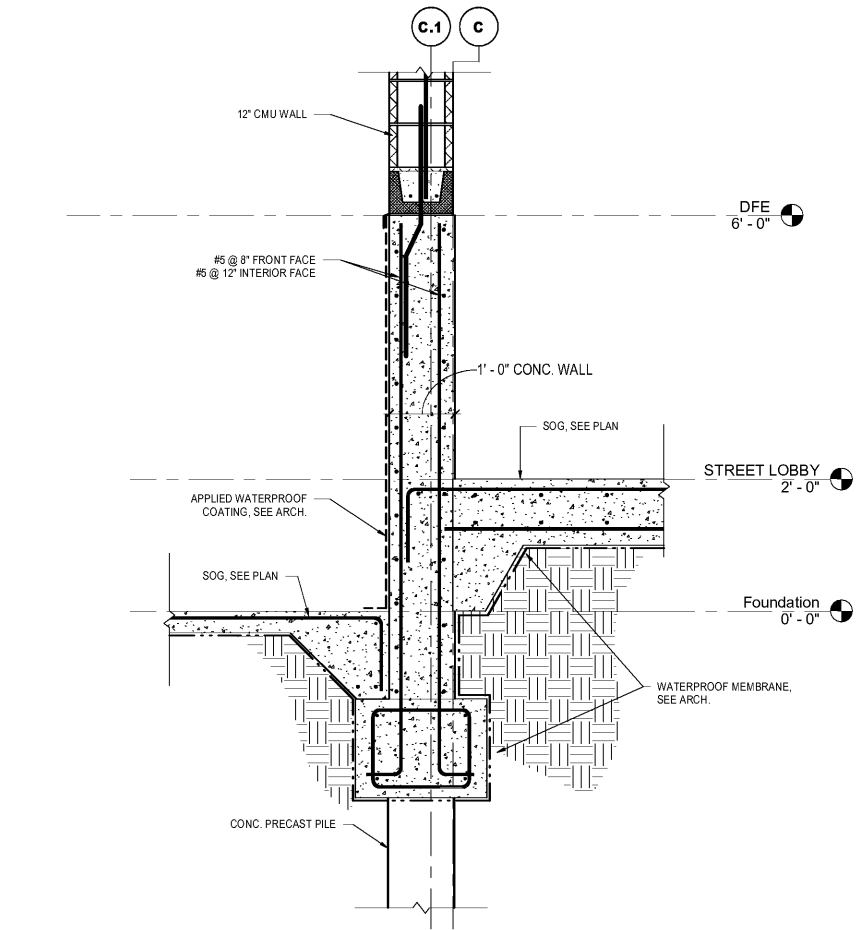
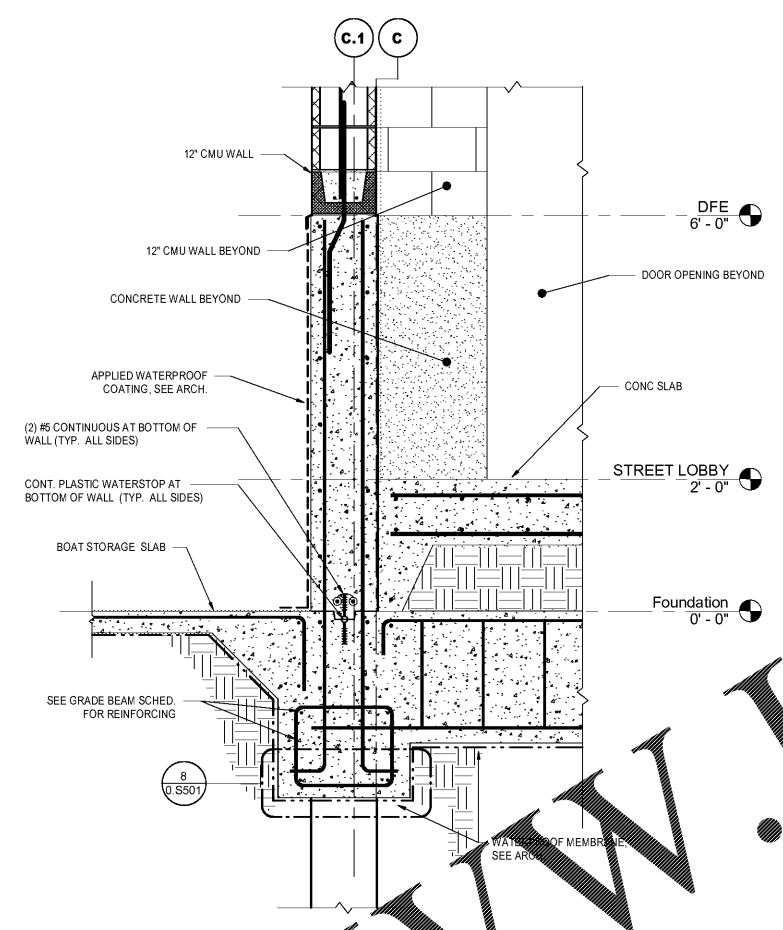


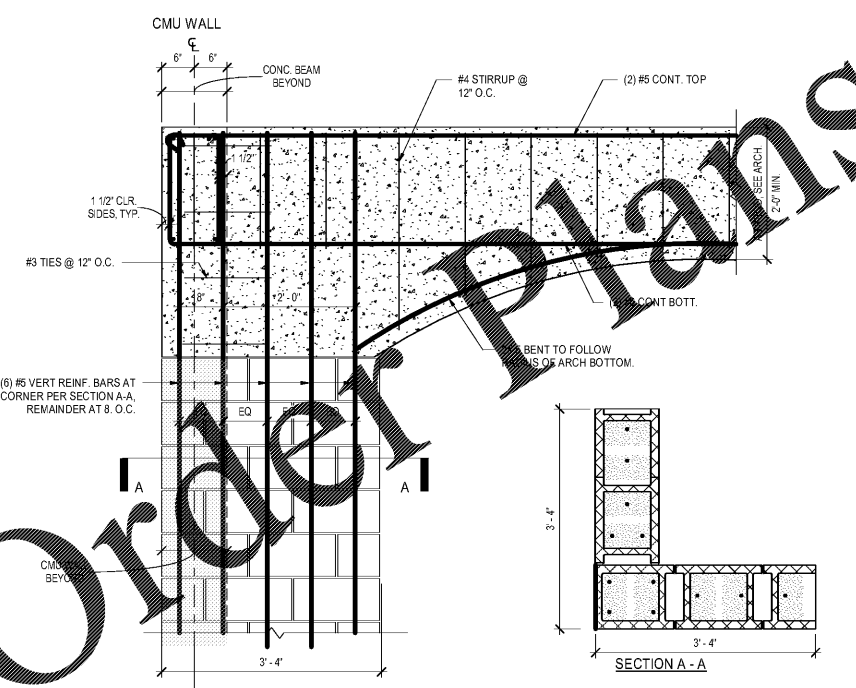
ALL DESIGNS, DRAWINGS AND SPECIFICATIONS DEPICTED ON THIS SHEET ARE PROPERTY OF COAST ARCHITECTS, INC. COPYRIGHT © 2018 ANY UNAUTHORIZED USE OR REPRODUCTION IS SUBJECT TO LEGAL PROSECUTION. POSSESSION IN ANY FORM CONSTITUTES ACCEPTANCE OF THESE CONDITIONS.
12:13:58 PM



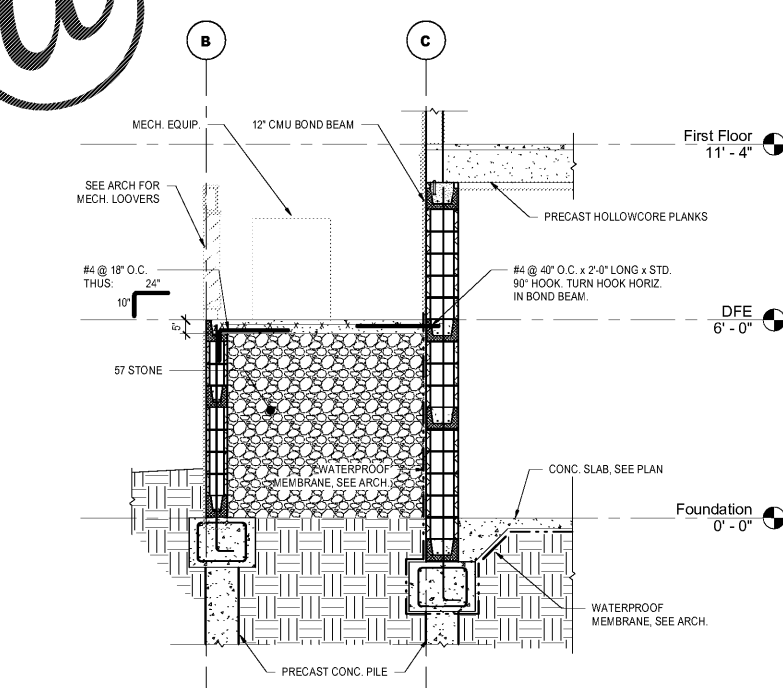
1 FOUNDATION SECTION A (DRY FLOOD PROOFED AREA)
1.S301 3/4" = 1'-0"



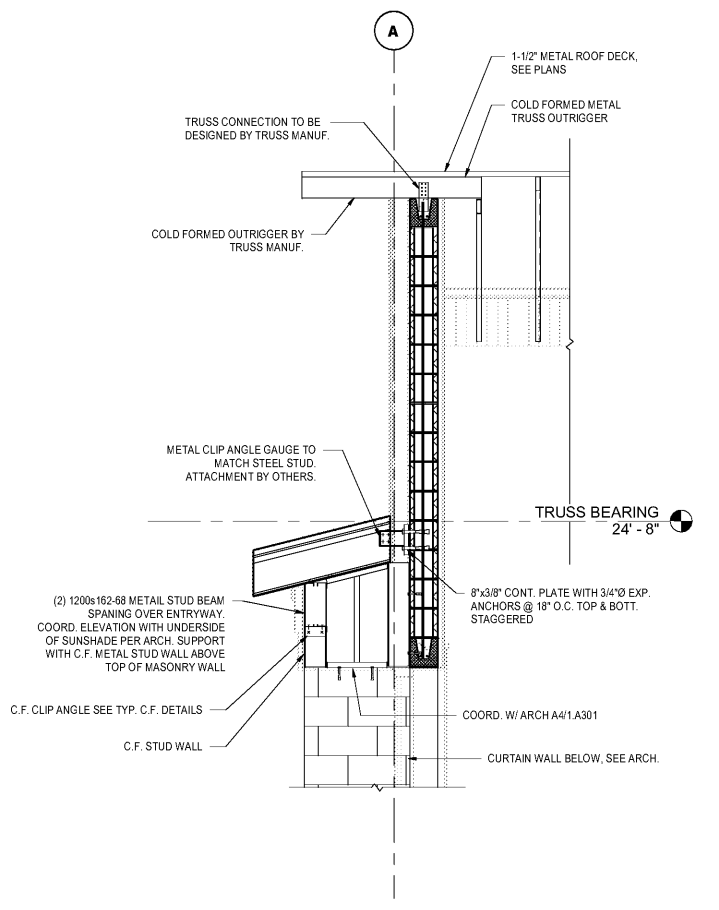
2 FOUNDATION SECTION B (DRY FLOOD PROOFED AREA)
1.S301 3/4" = 1'-0"



4 SECTION AT ARCHED STAIR TOWER
1.S301 3/4" = 1'-0"



5 SECTION AT MECHANICAL UNITS
1.S301 3/8" = 1'-0"



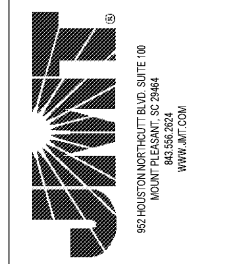
6 SUNSHADE DETAIL
1.S301 1/2" = 1'-0"

Order Plans

@

WWW.LDILine.com

coast
architects
671 St. Andrews Blvd., Charleston, SC 29407
Phone: 843.763.7064 Fax: 843.763.7061
www.coastarchitects.net



BOATING CENTER REDEVELOPMENT - SWAIN BOATING CENTER
11 HAMMOND AVENUE
CITADEL
THE MILITARY COLLEGE OF SOUTH CAROLINA

Revisions	
Rev. No.	Rev. Date

DRAWN BY: BE
CHECKED BY: CR
DATE: 06.01.2018

COAST PROJECT NO. 1722.00

BOAT HOUSE SECTIONS

1.S301

BID DOCUMENTS