

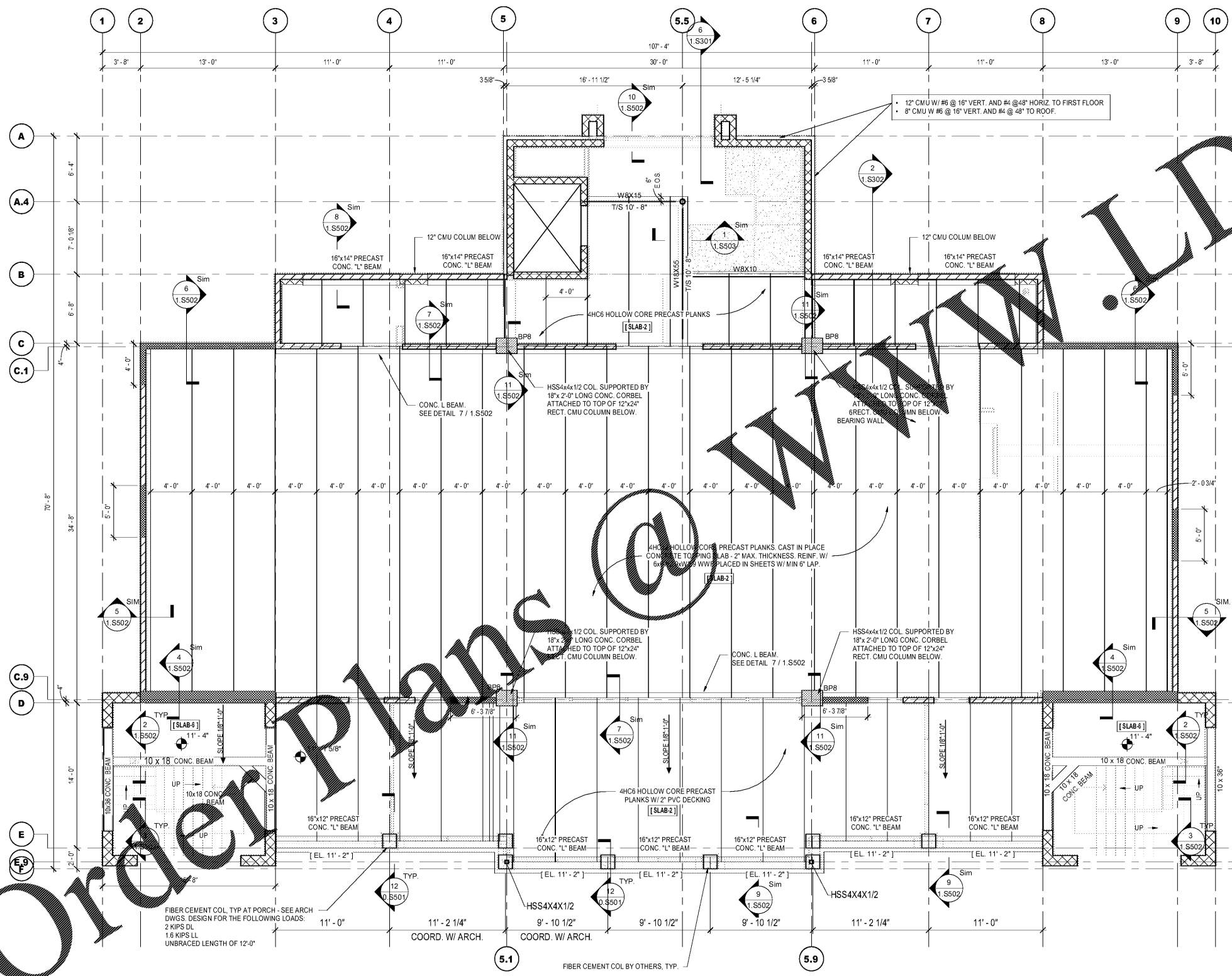
ALL DESIGNS, DRAWINGS AND SPECIFICATIONS DEPICTED ON THIS SHEET ARE PROPERTY OF COAST ARCHITECTS, INC. COPYRIGHT © 2018 ANY UNAUTHORIZED USE OR REPRODUCTION IS SUBJECT TO LEGAL PROSECUTION. POSSESSION IN ANY FORM CONSTITUTES ACCEPTANCE OF THESE CONDITIONS.

SLAB AND DECK SCHEDULE	
MARK	DESCRIPTION
12'	12" CONCRETE ONE WAY SLAB REINF. W/ #5 @ 12" T/B & #6 @ 10" TEMP. SEE FILE & GRADE BEAM LAYOUT FOR REINF. DIAGRAM
12" S0G	12" CONCRETE SLAB ON GRADE REINF. W/ #5 @ 12" T/B EA. WAY
SLAB-2	CAST IN PLACE CONCRETE TOPPING SLAB - 2" MAX. THICKNESS. REINF. W/ #6W2.9HW2.9 WWF PLACED IN SHEETS W/ MIN 6" LAP.
SLAB-4	4" CONCRETE SLAB ON GRADE W/ WWF#6-W1.4W#1.4. SEE PLAN FOR FINISH
SLAB-6	6" CONCRETE ONE WAY SLAB REINF. W/ #6 @ 12" O.C. TOP & BOTT. AND #4 @ 18" O.C. TEMP.
SLAB-16	16" FOUNDATION SLAB ON GRADE W/ #4 @ 12" O.C. EA. WAY TOP & BOTT.

FIRST FLOOR FRAMING NOTES

- INDICATES COLD FORMED SHEAR WALL.
- INDICATES SPECIAL REINFORCED SHEAR WALL.
- INDICATES ORDINARY COLD FORMED STUD WALL.
- INDICATES CONCRETE STEM WALL.

- NOTE 1: MAXIMUM SPACING OF VERTICAL CONTROL JOINTS IN EXTERIOR MASONRY VENEER SHALL BE 16'-0" FROM CORNER AND 32'-0" FOR INTERMEDIATE VERTICAL JOINTS. SEE ARCHITECT FOR EXACT LOCATIONS.
- NOTE 2: SEE ARCHITECTURAL DRAWINGS FOR ALL DIMENSIONS.
- NOTE 3: CONTRACTOR RESPONSIBLE FOR DESIGN OF HORIZONTAL DIAPHRAGM AT PRECAST LEVEL. DESIGN FORCE OF $V_{seismic} = 190$ KIPS, $V_{wind} = 97$ KIPS. ALL LOADS ARE IN KIP/FT.



Order Plans @ www.aldilines.com

1 2 - FIRST FLOOR PLAN
1.S103 3/16" = 1'-0"

BID DOCUMENTS

BOATING CENTER REDEVELOPMENT - SWAIN BOATING CENTER



Revisions	
Rev. No.	Rev. Date

DRAWN BY: BE
CHECKED BY: CR
DATE: 06.01.2018

COAST PROJECT NO. 1722.00

BOAT HOUSE FIRST FLOOR PLAN

1.S103

coast architects
671 St. Andrews Blvd., Charleston, SC 29407
Phone: 843.763.7064 Fax: 843.763.7061
www.coastarchitects.net

