

ALL DESIGNS, DRAWINGS AND SPECIFICATIONS DEPICTED ON THIS SHEET ARE PROPERTY OF COAST ARCHITECTS, INC. COPYRIGHT © 2018 ANY UNAUTHORIZED USE OR REPRODUCTION IS SUBJECT TO LEGAL PROSECUTION. POSSESSION IN ANY FORM CONSTITUTES ACCEPTANCE OF THESE CONDITIONS.

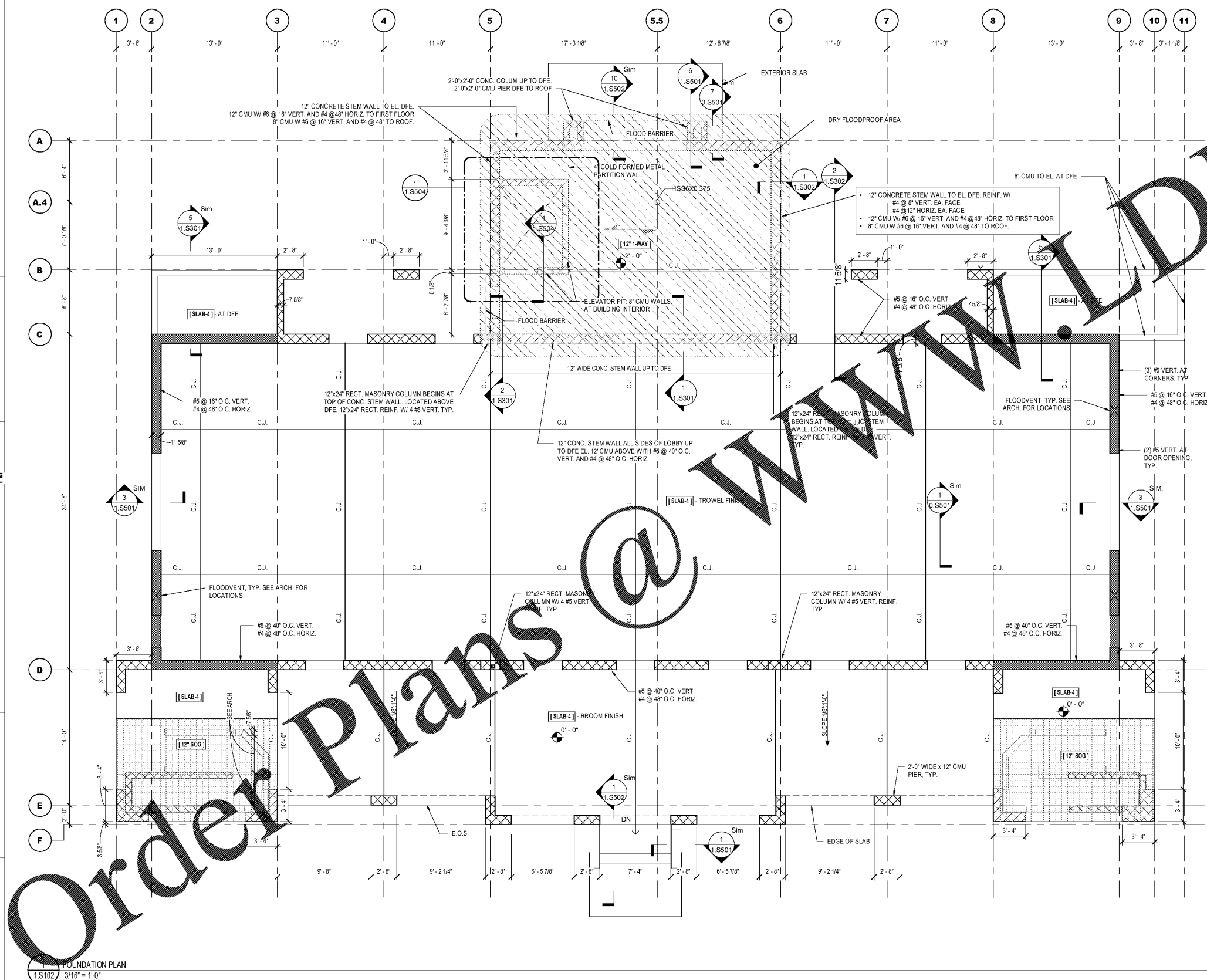
MARK	DESCRIPTION
12" 1-WAY	12" CONCRETE ONE WAY SLAB REINF. W/ #5 @ 12" TIB & #5 @ 10" TEMP. SEE PILE & GRADE BEAM LAYOUT FOR REINF. DIAGRAM
12" SOG	12" CONCRETE SLAB ON GRADE REINF. W/ #5 @ 12" TIB EA. WAY
SLAB-2	CAST IN PLACE CONCRETE TOPPING SLAB - 2" MAX. THICKNESS. REINF. W/ 6x6W2.9WV2.9 WWF PLACED IN SHEETS W/ MIN 6" LAP.
SLAB-4	4" CONCRETE SLAB ON GRADE W/ WWF6x6-W1.4W1.4 - SEE PLAN FOR FINISH
SLAB-6	6" CONCRETE ONE WAY SLAB REINF. W/ #5 @ 12" O.C. TOP & BOTT. AND #4 @ 18" O.C. TEMP.
SLAB-16	16" FOUNDATION SLAB ON GRADE W/ #4 @ 12" O.C. EA. WAY TOP & BOTT.

**FOUNDATION PLAN NOTES**

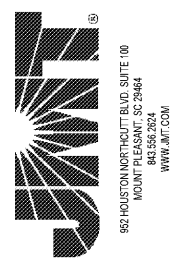
- INDICATES SPECIAL REINFORCED SHEAR WALL.
- INDICATES ORDINARY MASONRY WALL.
- INDICATES CONCRETE STEM WALL.
- INDICATES DRY FLOODPROOF AREA.
- INDICATES EXTENT OF 12" SOG AT STAIR TOWERS.
- INDICATES TO SLOPE SLAB. SEE ARCHITECTURAL FOR AMOUNT OF SLOPE AND EXACT LOCATION.
- C.J.: CONTROL JOINTS @ 15' MAX SPAN UNLESS NOTED OTHERWISE.
- [SLAB-X]: INDICATES SLAB SCHEDULE MARK.
- INDICATES FLOOD BARRIER ARCH FINISHES.

- NOTE 1: CONTRACTOR SHALL COORDINATE EXACT LOCATIONS OF ALL FLOOR JOINTS WITH THE ARCHITECTURAL JOINTS IN FINISHED FLOOR FINISHES. FLOOR JOINTS SHOULD LOCATE DIRECTLY UNDER A JOINT IN THE ARCHITECTURAL FINISH ABOVE. SEE ARCHITECTURAL DRAWINGS FOR EXACT LOCATIONS.
- NOTE 2: AT THE BASE OF ALL STEPS, PROVIDE UNOPENED SLAB 10" THICK & 20" WIDE REINF. WITH 2 #5 CONT.
- NOTE 3: MAXIMUM SPACING OF VERTICAL CONTROL JOINTS IN EXTERIOR MASONRY VENEER IS 16'-0" FROM CORNERS AND 32'-0" FOR INTERMEDIATE VERTICAL JOINTS. SEE ARCHITECT FOR EXACT LOCATIONS.
- NOTE 4: ALL SLAB ON GRADE SHALL BE CONCRETE WITH THICKNESS AS INDICATED IN THE SCHEDULE OVER A 10 MIL POLYMER BARRIER AND 4" OF COMPACTED GRANULAR MATERIAL. SLAB SHALL BE REINFORCED WITH 12" SPACING OF WWF PLACED IN FLAT SHEETS AND SECURED IN THE TOP THIRD OF THE SLAB.
- NOTE 5: SEE ARCHITECTURAL DRAWINGS FOR ALL DIMENSIONS.
- NOTE 6: CONTRACTOR TO COORDINATE WITH ARCHITECTURAL DRAWINGS ALL LOCATIONS WHERE SLAB-ON-GRADE SLOPES TO DRAIN.
- NOTE 7: CONTRACTOR TO COORDINATE WITH ARCHITECTURAL DRAWINGS FOR FINISH OF ALL CONCRETE SLAB ON GRADE SURFACES.
- NOTE 8: CONTRACTOR TO COORDINATE WITH ARCHITECTURAL DRAWINGS ALL LOCATIONS AND DIMENSIONS OF FLOOD VENTS.
- NOTE 9: COORDINATE EXACT LOCATIONS OF MASONRY CONTROL JOINTS WITH ARCHITECT. JOINT SHALL EXTEND TO TOP OF WALL AND SHALL NOT BE LOCATED WITHIN 1'-0" OF A TRUSS BEARING SEAT ABOVE, 2'-0" OF A BEAM BEARING, OR WITHIN 2'-0" OF JAMB OF ANY OPENING.

- FLOODPROOFING**
- NOTE 1: DRY FLOODPROOFED AREA IS DESCRIBED IN ACCORDANCE WITH ASCE 24.
- NOTE 2: PRIOR TO THE APPLICATION OF WATERPROOFING MATERIALS ON CONCRETE WALLS, HOLES AND RECESSES RESULTING FROM THE REMOVAL OF FORM TIES SHALL BE SEALED WITH A BITUMINOUS MATERIAL OR OTHER APPROVED METHODS OR MATERIALS.
- NOTE 3: WATERPROOFING (INCLUDING FLOOD SHIELDS) SHALL BE APPLIED FROM THE BOTTOM OF THE WALL TO NOT LESS THAN 12" INCHES ABOVE THE BASE FLOOD ELEVATION.
- NOTE 4: FLOOR WATERPROOFING SHALL BE ACCOMPLISHED BY PLACING A MEMBRANE OF NOT LESS THAN 10-MIL POLYVINYL CHLORIDE WITH JOINTS LAPPED NOT LESS THAN 6 INCHES OR OTHER APPROVED MATERIALS UN THE SLAB. JOINTS SHALL BE LAPPED AND SEALED IN ACCORDANCE WITH THE MANUFACTURER'S INSTALLATION INSTRUCTIONS. (REF. IBC, 1905.3.1)
- NOTE 5: REF TO ARCHITECT FOR DAMP PROOFING ON WALL.
- NOTE 6: FLOOD BARRIERS SHALL BE DESIGNED TO MEET THE REQUIREMENTS OF ASCE-24 BASED ON THE DESIGN CRITERIA PROVIDED IN THESE DRAWINGS. SHOP DRAWINGS AND CALCULATIONS SIGNED AND SEALED BY AN ENGINEER REGISTERED IN THE STATE OF SOUTH CAROLINA, SHALL BE SUBMITTED TO THE ARCHITECT FOR APPROVAL.



Order Plans @ WWW.IDLINE.CO



**BOATING CENTER REDEVELOPMENT - SWAIN BOATING CENTER**  
 11 HAMMOND AVENUE  
**CITADEL**  
 THE MILITARY COLLEGE OF SOUTH CAROLINA

Revisions	
Rev. No.	Rev. Date

DRAWN BY: BE  
 CHECKED BY: CR  
 DATE: 06.01.2018

COAST PROJECT NO. 1722.00

**BOAT HOUSE FOUNDATION PLAN LAYOUT**

**1.S102**

BID DOCUMENTS