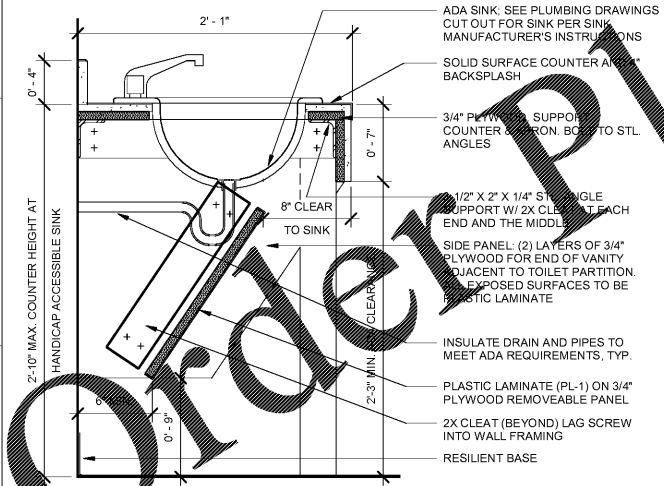
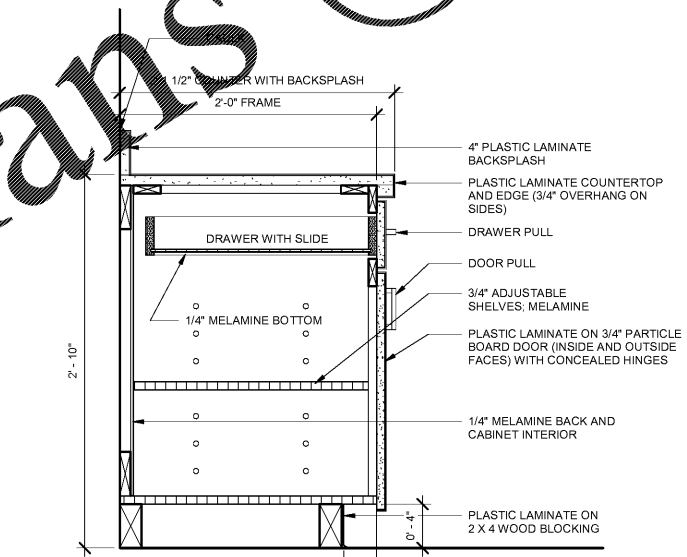


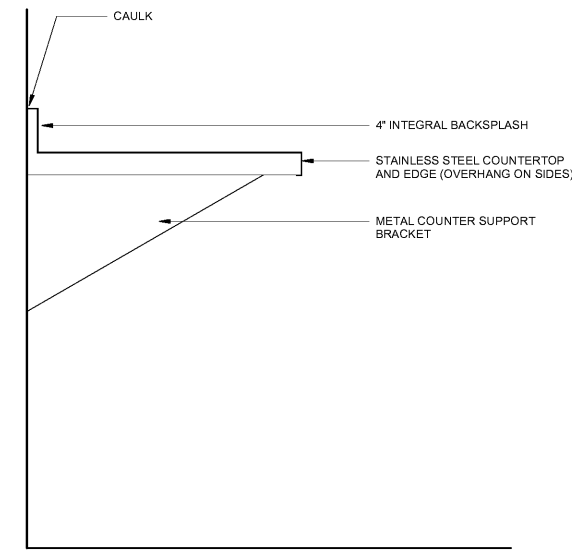
ALL DESIGNS, DRAWINGS AND SPECIFICATIONS DEPICTED ON THIS SHEET ARE PROPERTY OF COAST ARCHITECTS, INC. COPYRIGHT © 6/1/2018 ANY UNAUTHORIZED USE OR REPRODUCTION IS SUBJECT TO LEGAL PROSECUTION. POSSESSION IN ANY FORM CONSTITUTES ACCEPTANCE OF THESE CONDITIONS.  
 11:08:21 AM



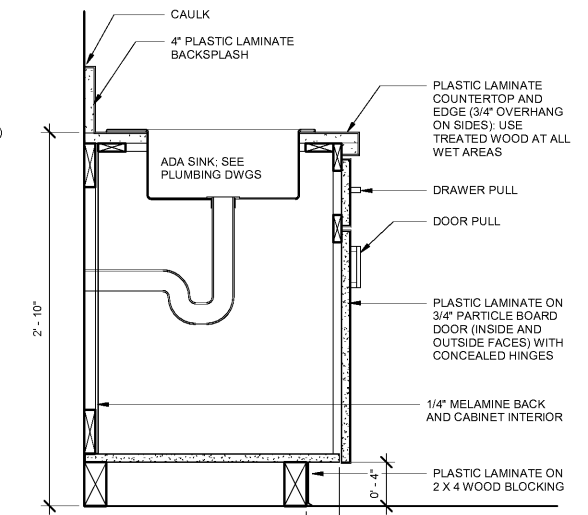
**A1** 34" VANITY SECTION  
 1.A601 SCALE: 1 1/2" = 1'-0"



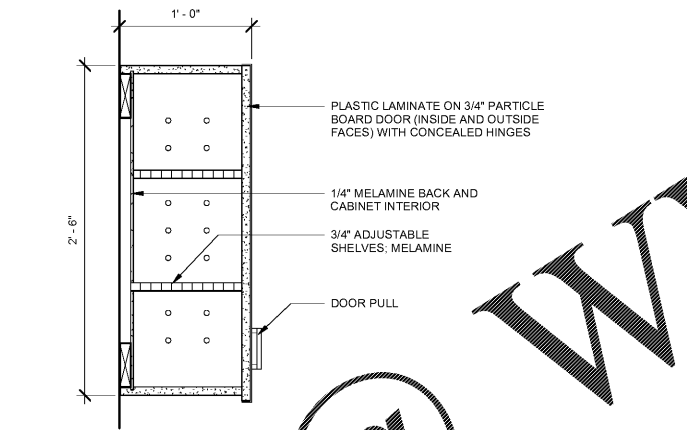
**A3** 34" BASE CABINET  
 1.A601 SCALE: 1 1/2" = 1'-0"



**A6** 36" COUNTERTOP  
 1.A601 SCALE: 1 1/2" = 1'-0"



**A8** 34" SINK BASE CABINET  
 1.A601 SCALE: 1 1/2" = 1'-0"

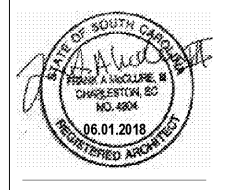


**C3** 30" UPPER CABINET  
 1.A601 SCALE: 1 1/2" = 1'-0"

WWW.LDILine.com

Order Plans

**coast architects**  
 671 St. Andrews Blvd Charleston, SC 29407  
 Phone: 843.763.7064 Fax: 843.763.7061  
 www.coastarchitects.net



**BOATING CENTER REDEVELOPMENT - SWAIN BOATING CENTER**  
 H09-9617-PG-C  
 THE CITADEL 11 HAMMOND AVENUE CHARLESTON, SC  
 THE MILITARY COLLEGE OF SOUTH CAROLINA

| Revisions |           |
|-----------|-----------|
| Rev. No.  | Rev. Date |
|           |           |

DRAWN BY: MCC  
 CHECKED BY: FAM  
 DATE: 06.01.2018  
 COAST PROJECT NO: 1722.00

**BOAT HOUSE CASEWORK SECTIONS**  
**1.A601**

BID DOCUMENTS