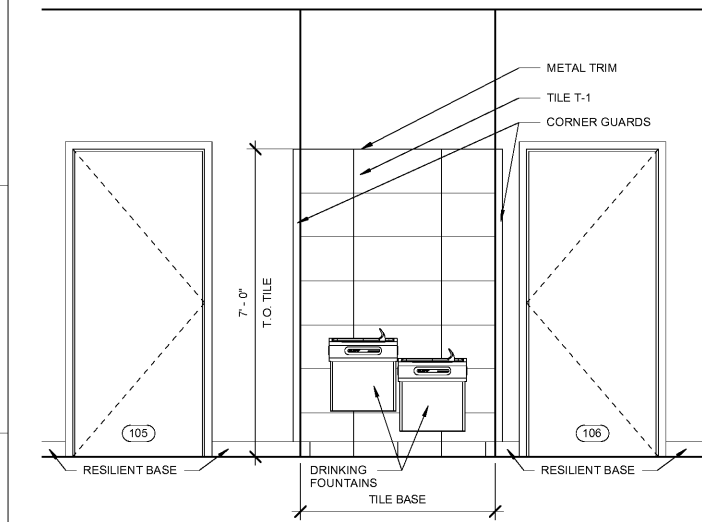
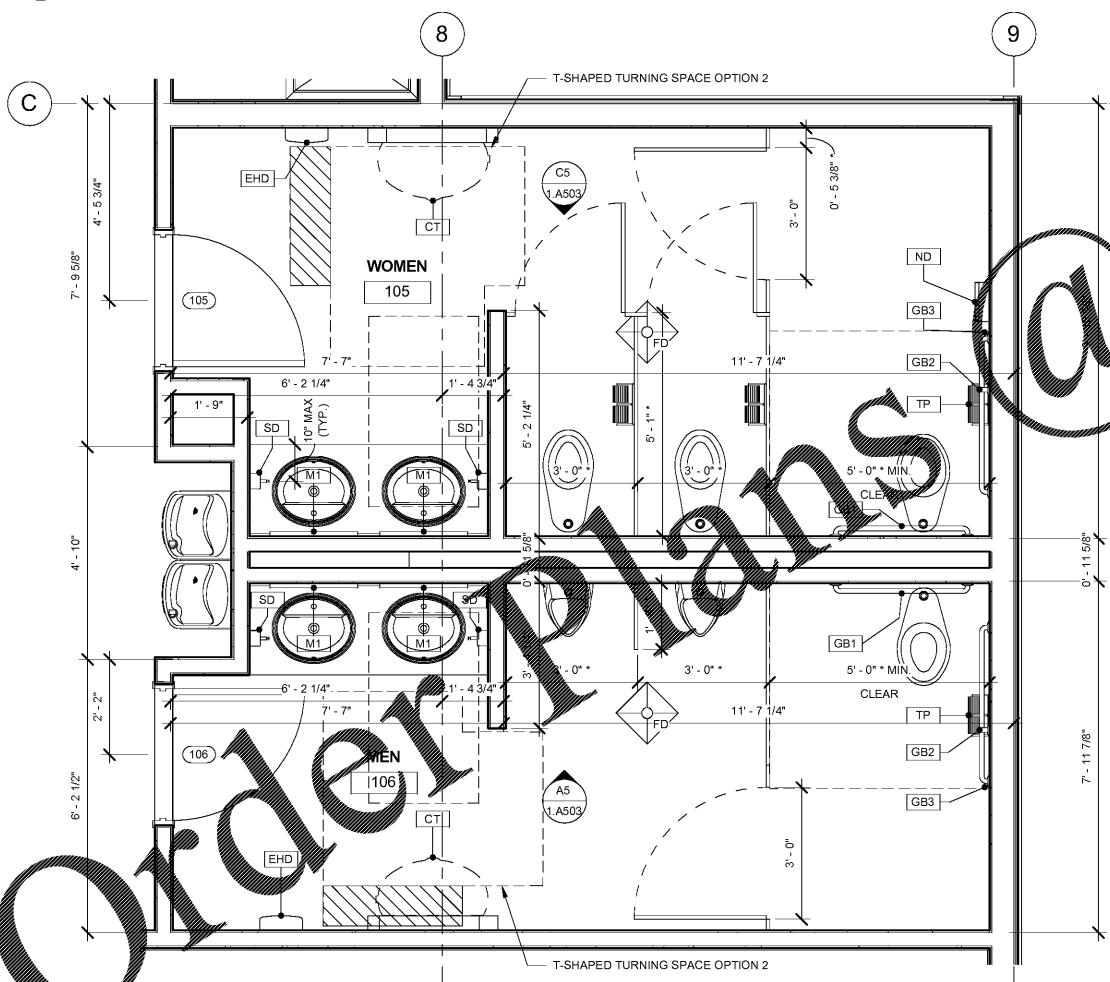


ALL DESIGNS, DRAWINGS AND SPECIFICATIONS DEPICTED ON THIS SHEET ARE PROPERTY OF COAST ARCHITECTS, INC. COPYRIGHT © 6/1/2018 ANY UNAUTHORIZED USE OR REPRODUCTION IS SUBJECT TO LEGAL PROSECUTION. POSSESSION IN ANY FORM CONSTITUTES ACCEPTANCE OF THESE CONDITIONS.

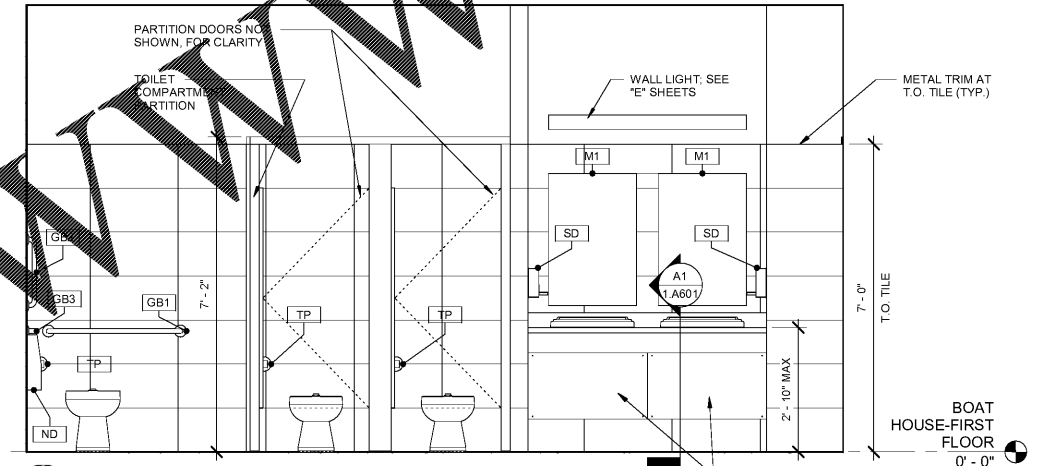


E1 INTERIOR ELEVATION VESTIBULE 103 ALCOVE
1.A503 SCALE: 1/2" = 1'-0"

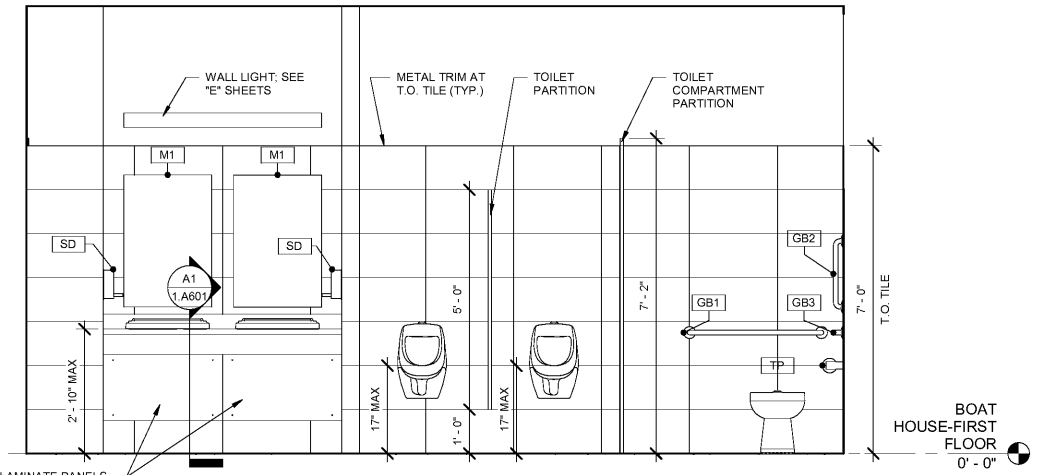


A1 ENLARGED TOILET PLAN
1.A503 SCALE: 1/2" = 1'-0"

NOTE: (*) DENOTES DIMENSION TO FINISH FACE OF WALL
 SEE TOILET ACCESSORY SCHEDULE ON SHEET 0.A004



C5 WOMEN 105 INTERIOR ELEVATION
1.A503 SCALE: 1/2" = 1'-0"

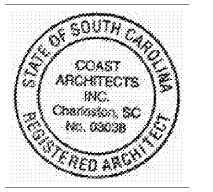


A5 MEN 106 INTERIOR ELEVATION
1.A503 SCALE: 1/2" = 1'-0"

www.LDILine.com

Order Plans @

coast architects
 671 St. Andrews Blvd Charleston, SC 29407
 Phone: 843.763.7064 Fax: 843.763.7061
 www.coastarchitects.net



BOATING CENTER REDEVELOPMENT - SWAIN BOATING CENTER
 H09-9617-PG-C
CITADEL 11 HAMMOND AVENUE
 CHARLESTON, SC
THE MILITARY COLLEGE OF SOUTH CAROLINA

Revisions	
Rev. No.	Rev. Date

DRAWN BY: LWM
 CHECKED BY: FAM
 DATE: 06.01.2018
 COAST PROJECT NO: 1722.00

BOAT HOUSE ENLARGED TOILET PLANS & ELEVATIONS
1.A503

BID DOCUMENTS