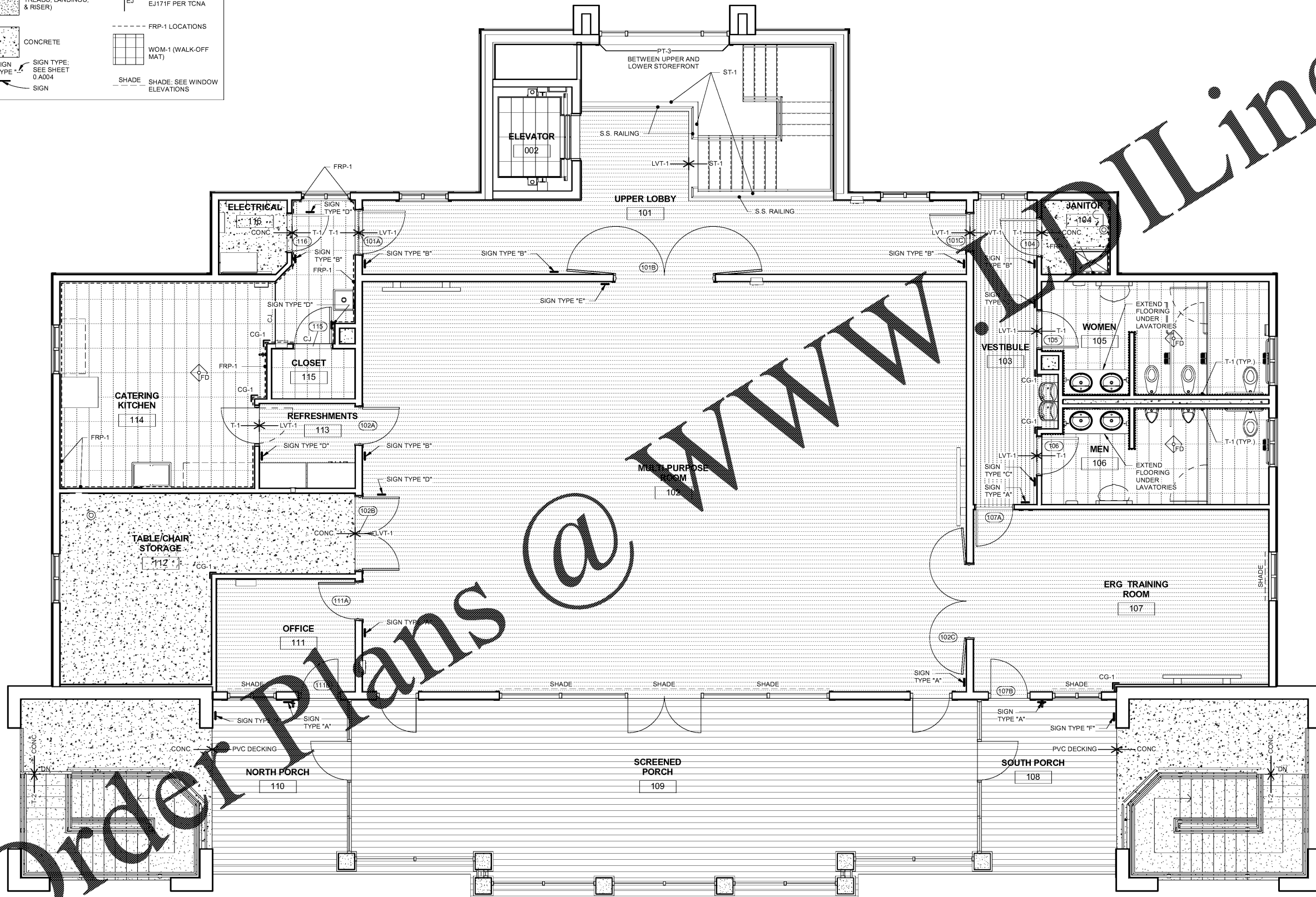


ALL DESIGNS, DRAWINGS AND SPECIFICATIONS DEPICTED ON THIS SHEET ARE PROPERTY OF COAST ARCHITECTS, INC. COPYRIGHT © 6/1/2018 ANY UNAUTHORIZED USE OR REPRODUCTION IS SUBJECT TO LEGAL PROSECUTION. POSSESSION IN ANY FORM CONSTITUTES ACCEPTANCE OF THESE CONDITIONS.

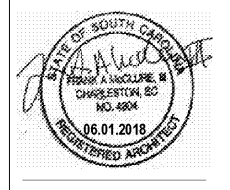
FINISH LEGEND	
	T-1 (PORCELAIN TILE)
	T-1 ON WALLS
	T.S. = TRANSITION STRIP SEE DETAILS A503
	EJ EXPANSION JOINT EJ171F PER TCNA
	FRP-1 LOCATIONS
	WOM-1 (WALK-OFF MAT)
	SHADE: SEE WINDOW ELEVATIONS



Order Plans @
WWW.Line.coast
Order Plans @

BOAT HOUSE-FIRST FLOOR FINISH PLAN
 SCALE: 1/4" = 1'-0"

coast architects
 671 St. Andrews Blvd Charleston, SC 29407
 Phone: 843.763.7064 Fax: 843.763.7061
 www.coastarchitects.net



BOATING CENTER REDEVELOPMENT - SWAIN BOATING CENTER
 H09-9617-PG-C
CITADEL
 THE MILITARY COLLEGE OF SOUTH CAROLINA
 11 HAMMOND AVENUE
 CHARLESTON, SC

Revisions	
Rev. No.	Rev. Date

DRAWN BY: MCC
 CHECKED BY: FAM
 DATE: 06.01.2018
 COAST PROJECT NO: 1722.00

BOAT HOUSE FIRST FLOOR FINISH PLAN
1.A502

BID DOCUMENTS