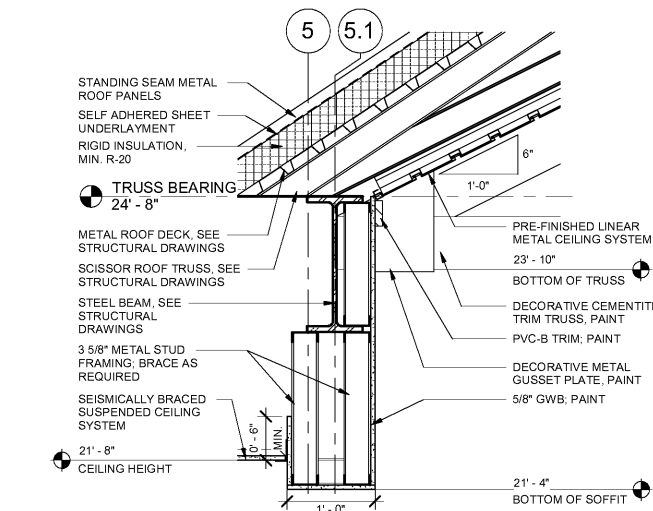
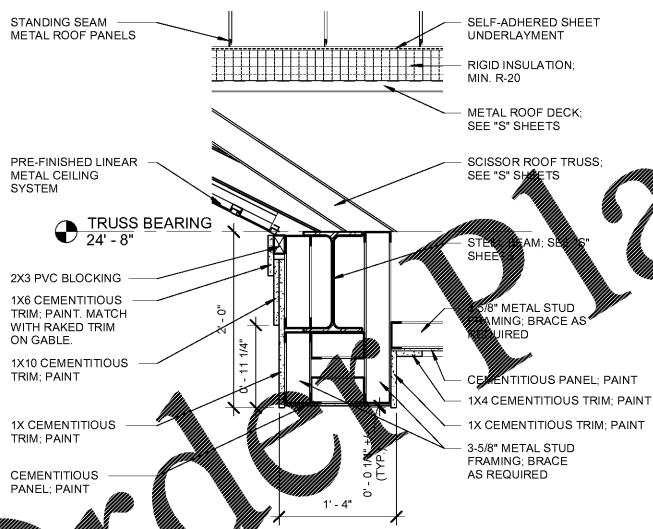


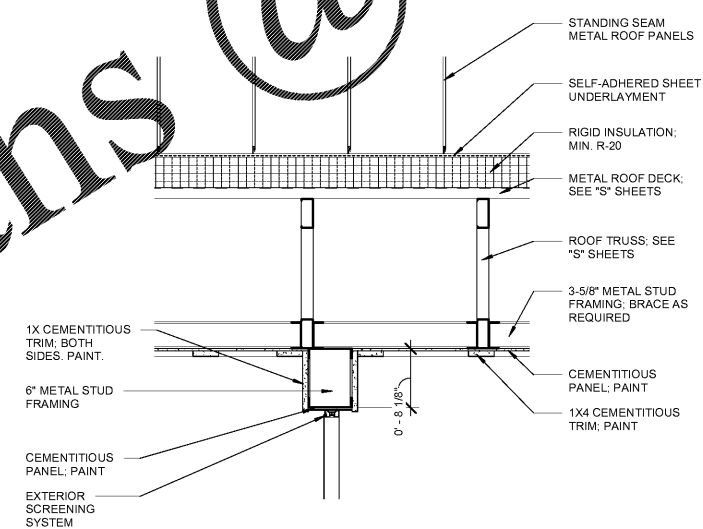
ALL DESIGNS, DRAWINGS AND SPECIFICATIONS DEPICTED ON THIS SHEET ARE PROPERTY OF COAST ARCHITECTS, INC. COPYRIGHT © 6/1/2018 ANY UNAUTHORIZED USE OR REPRODUCTION IS SUBJECT TO LEGAL PROSECUTION. POSSESSION IN ANY FORM CONSTITUTES ACCEPTANCE OF THESE CONDITIONS.



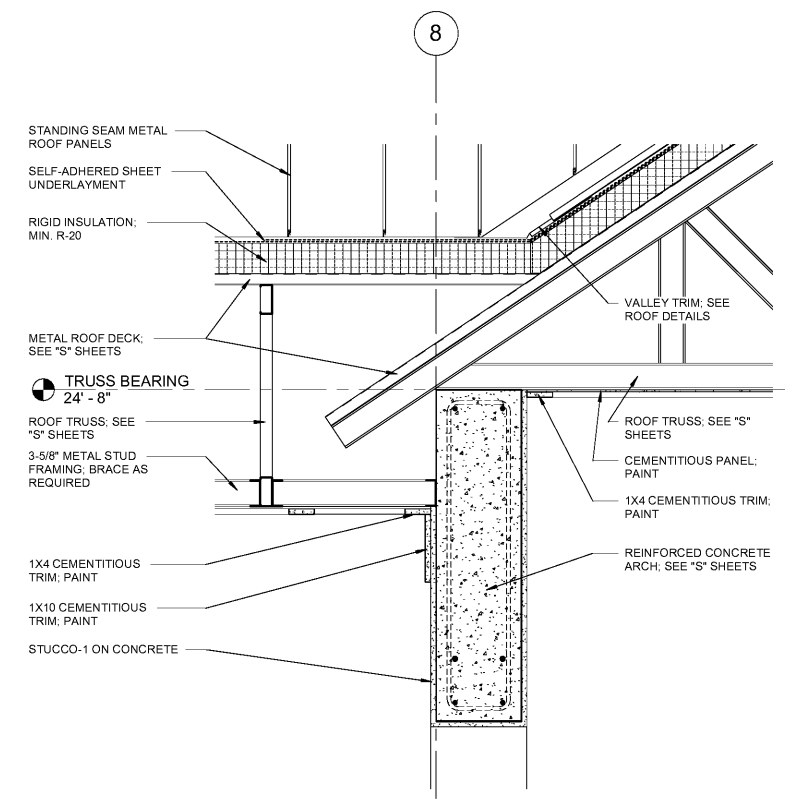
D1 INTERIOR SOFFIT SECTION
1.A407 SCALE: 1" = 1'-0"



A1 SOFFIT DETAIL AT SCREENED PORCH
1.A407 SCALE: 1" = 1'-0"



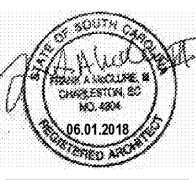
A3 SOFFIT DETAIL AT NORTH & SOUTH PORCH SCREEN
1.A407 SCALE: 1" = 1'-0"



A6 SOFFIT DETAIL AT ARCHED STAIR TOWER
1.A407 SCALE: 1" = 1'-0"

WWW.LDILine.com

coast architects
671 St. Andrews Blvd, Charleston, SC 29407
Phone: 843.763.7064 Fax: 843.763.7061
www.coastarchitects.net



BOATING CENTER REDEVELOPMENT - SWAIN BOATING CENTER
H09-9617-PG-C

CITADEL
11 HAMMOND AVENUE
CHARLESTON, SC

THE MILITARY COLLEGE OF SOUTH CAROLINA

Revisions	
Rev. No.	Rev. Date

DRAWN BY: LWM
CHECKED BY: FAM
DATE: 06.01.2018

COAST PROJECT NO: 1722.00

BOAT HOUSE CEILING DETAILS

1.A407

BID DOCUMENTS