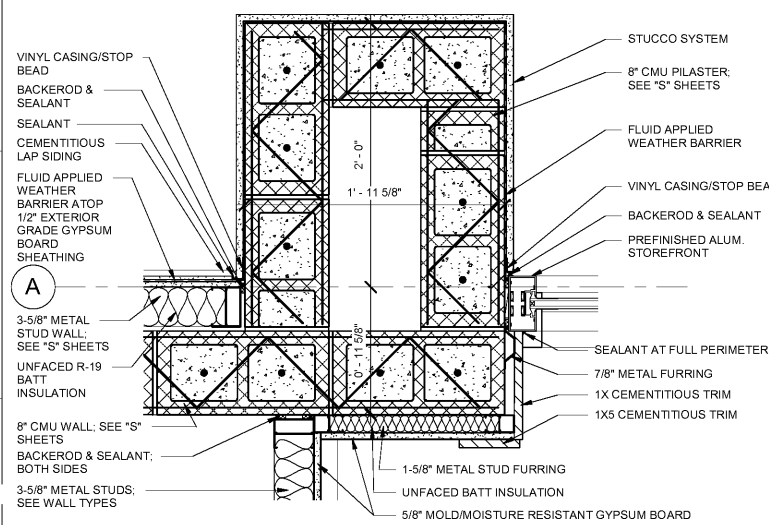
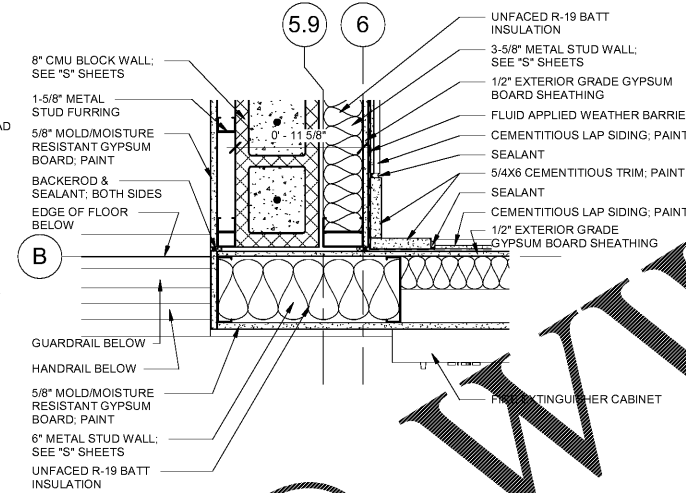


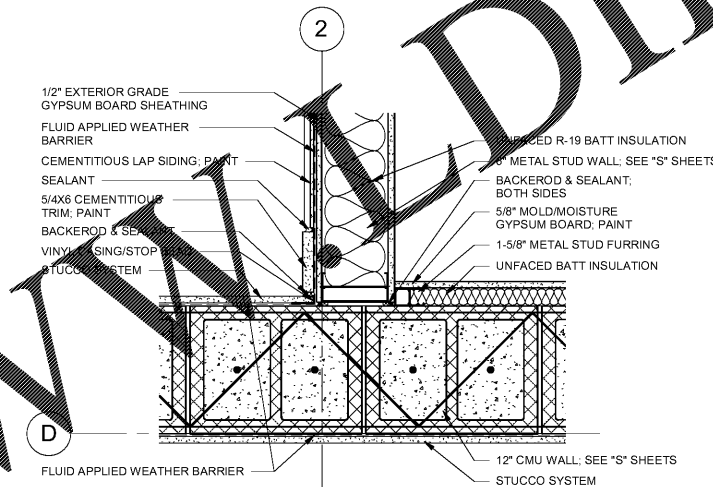
ALL DESIGNS, DRAWINGS AND SPECIFICATIONS DEPICTED ON THIS SHEET ARE PROPERTY OF COAST ARCHITECTS, INC. COPYRIGHT © 06/12/2018 ANY UNAUTHORIZED USE OR REPRODUCTION IS SUBJECT TO LEGAL PROSECUTION. POSSESSION IN ANY FORM CONSTITUTES ACCEPTANCE OF THESE CONDITIONS.
10:51:37 AM



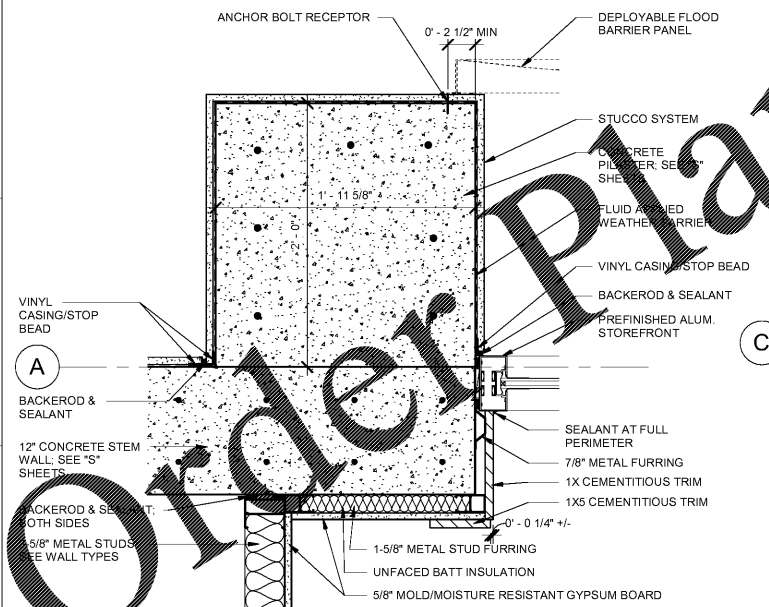
D1 CMU PILASTER PLAN DETAIL
1.A406 SCALE: 1 1/2" = 1'-0"



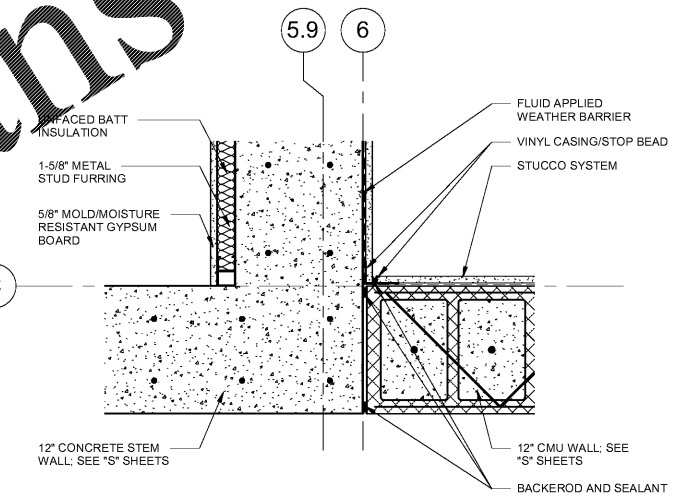
D3 PLAN DETAIL
1.A406 SCALE: 1 1/2" = 1'-0"



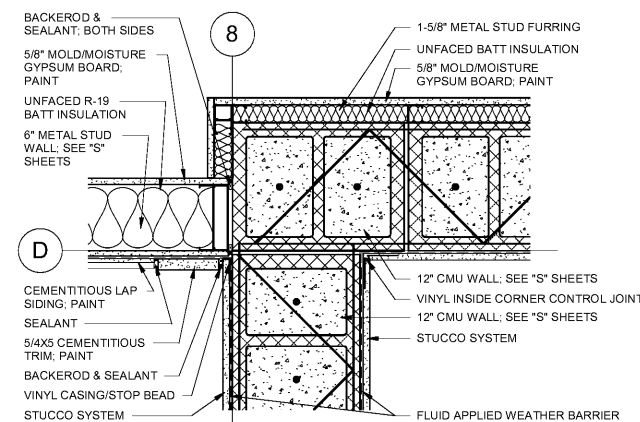
D6 PLAN DETAIL
1.A406 SCALE: 1 1/2" = 1'-0"



A1 CONCRETE PILASTER PLAN DETAIL
1.A406 SCALE: 1 1/2" = 1'-0"



A3 PLAN DETAIL
1.A406 SCALE: 1 1/2" = 1'-0"



A6 PLAN DETAIL
1.A406 SCALE: 1 1/2" = 1'-0"

coast architects
671 St. Andrews Blvd., Charleston, SC 29407
Phone: 843.763.7064 Fax: 843.763.7061
www.coastarchitects.net



BOATING CENTER REDEVELOPMENT - SWAIN BOATING CENTER
H09-9617-PG-C
CITADEL 11 HAMMOND AVENUE CHARLESTON, SC
THE MILITARY COLLEGE OF SOUTH CAROLINA

Revisions	
Rev. No.	Rev. Date

DRAWN BY: LWM
CHECKED BY: FAM
DATE: 06.01.2018
COAST PROJECT NO: 1722.00

BOAT HOUSE PLAN DETAILS
1.A406

BID DOCUMENTS