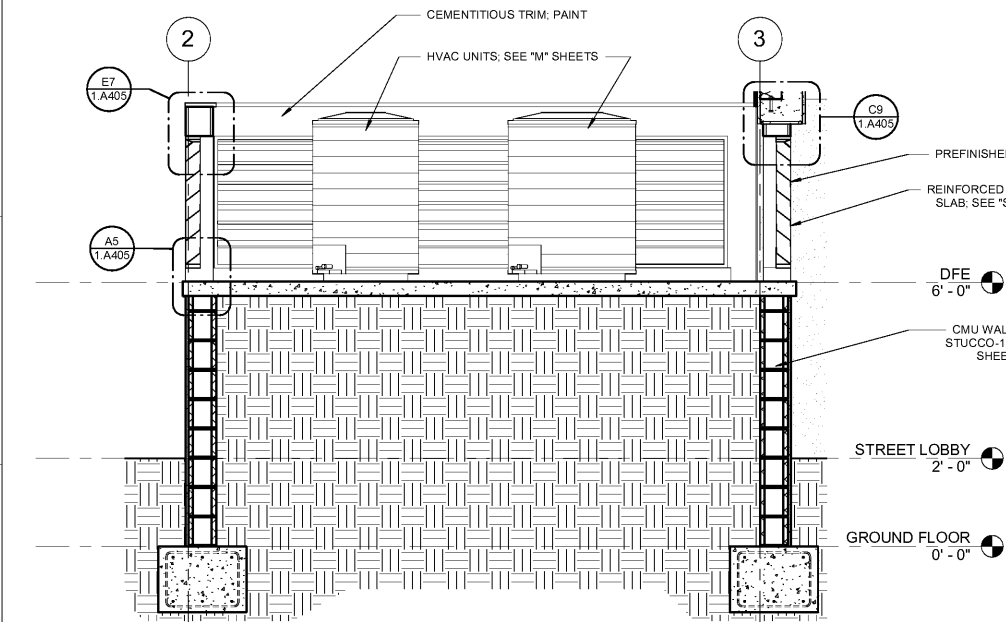
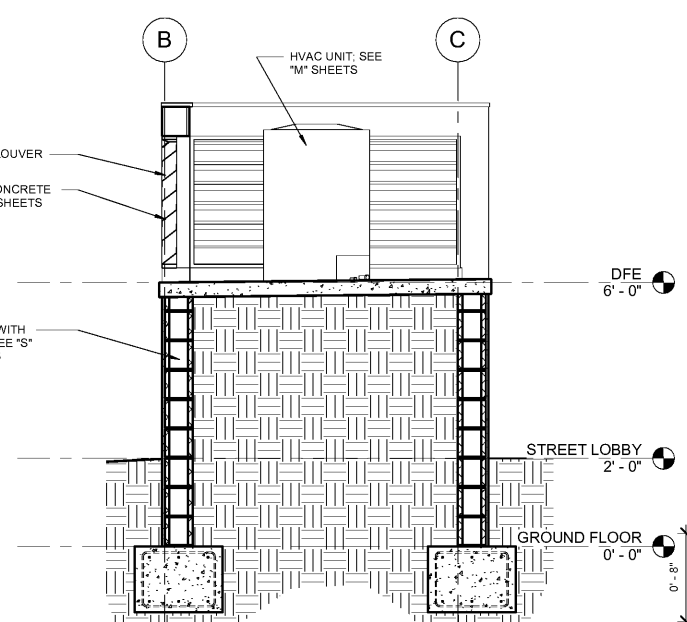


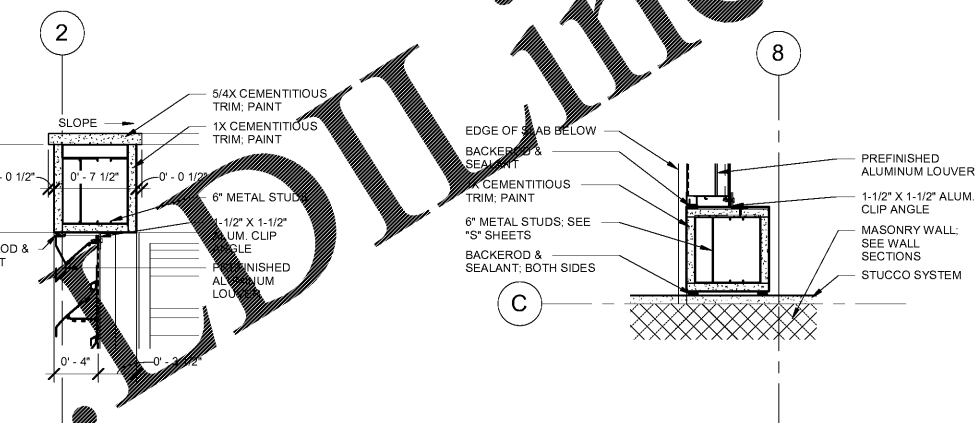
ALL DESIGNS, DRAWINGS AND SPECIFICATIONS DEPICTED ON THIS SHEET ARE PROPERTY OF COAST ARCHITECTS, INC. COPYRIGHT © 6/1/2018 ANY UNAUTHORIZED USE OR REPRODUCTION IS SUBJECT TO LEGAL PROSECUTION. POSSESSION IN ANY FORM CONSTITUTES ACCEPTANCE OF THESE CONDITIONS.
10:51:26 AM



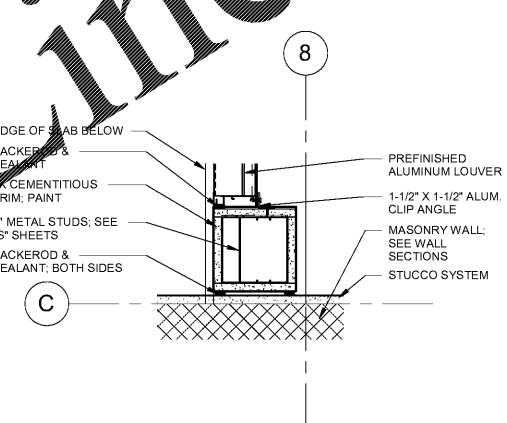
F1 SECTION 1 - HVAC PLATFORM
1.A405 SCALE: 1/2" = 1'-0"



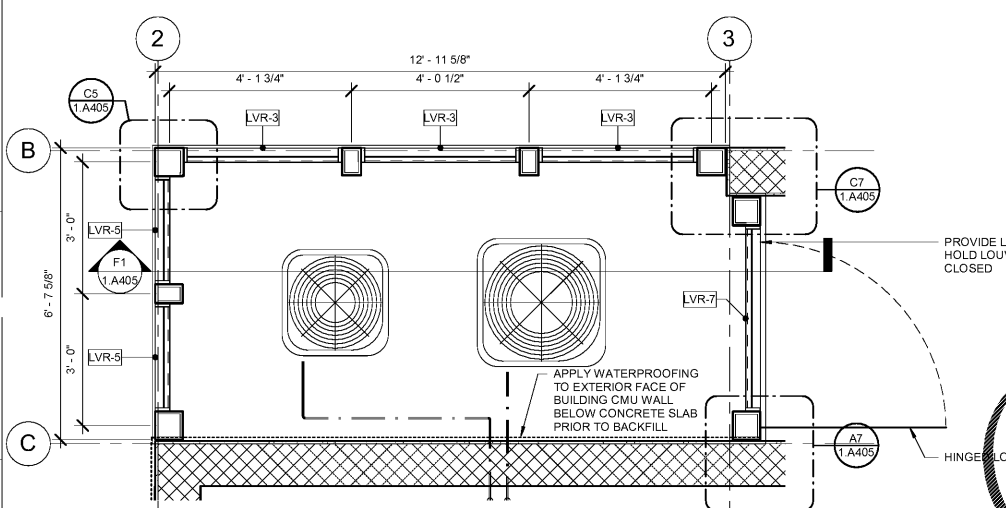
F5 SECTION 2 - HVAC PLATFORM
1.A405 SCALE: 1/2" = 1'-0"



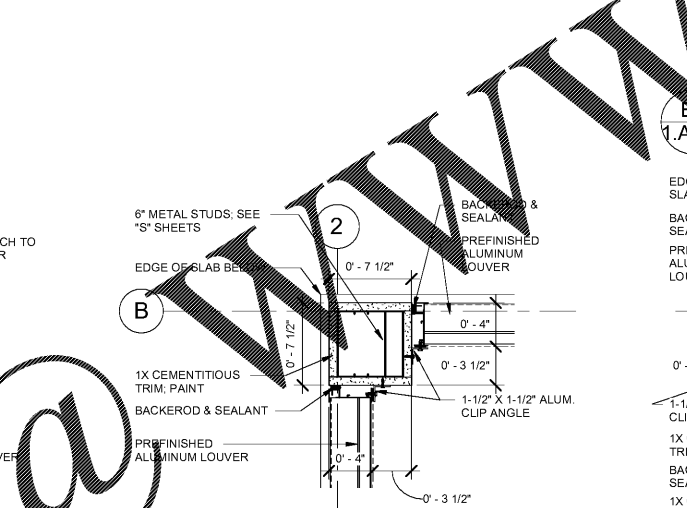
E1 PLATFORM SECTION DETAIL
1.A405 SCALE: 1 1/2" = 1'-0"



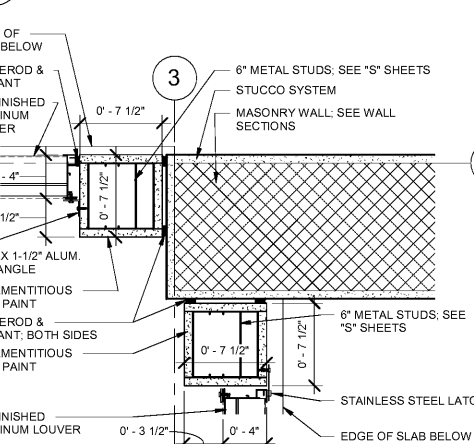
E9 PLATFORM PLAN DETAIL
1.A405 SCALE: 1 1/2" = 1'-0"



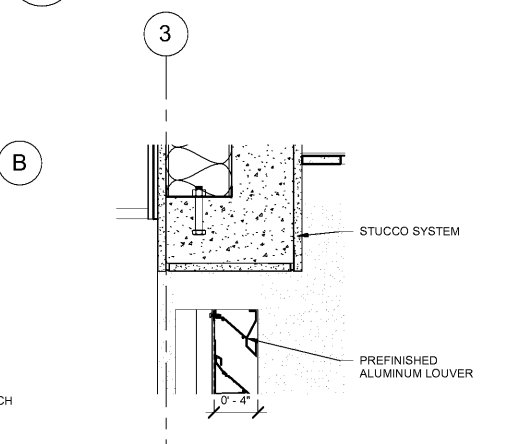
C1 BOAT HOUSE-GROUND FLOOR - HVAC PLATFORM 2
1.A405 SCALE: 1/2" = 1'-0"



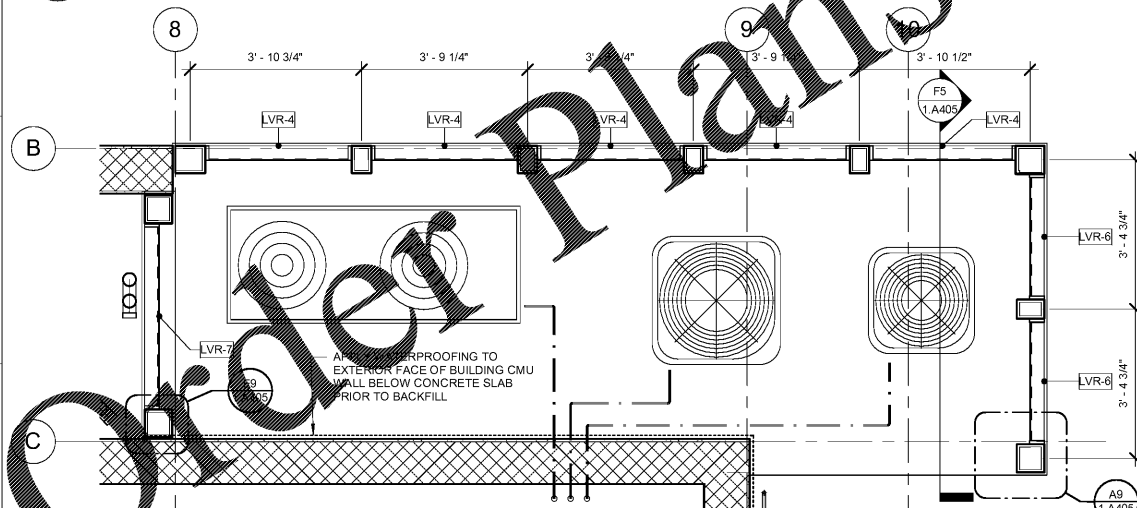
C5 PLATFORM PLAN DETAIL
1.A405 SCALE: 1 1/2" = 1'-0"



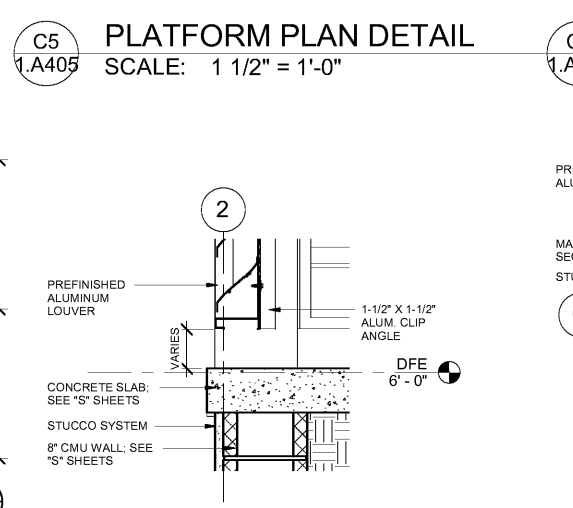
C7 PLATFORM PLAN DETAIL
1.A405 SCALE: 1 1/2" = 1'-0"



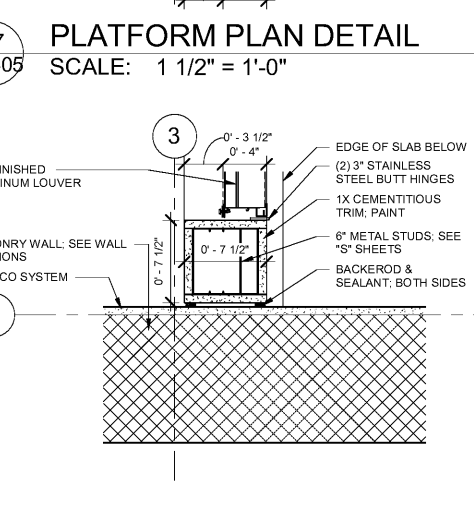
C9 PLATFORM SECTION DETAIL
1.A405 SCALE: 1 1/2" = 1'-0"



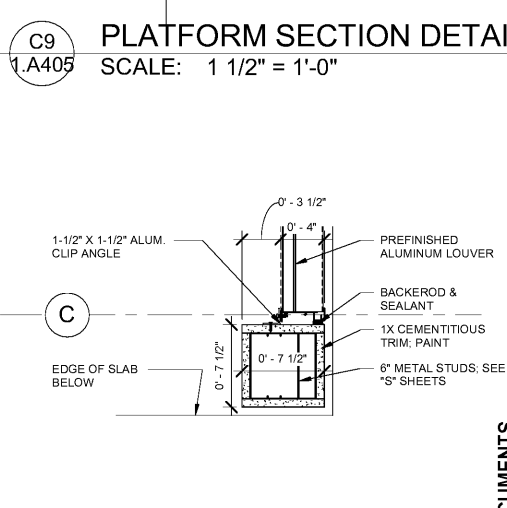
A1 BOAT HOUSE-GROUND FLOOR - HVAC PLATFORM 1
1.A405 SCALE: 1/2" = 1'-0"



A5 PLATFORM SECTION DETAIL
1.A405 SCALE: 1 1/2" = 1'-0"



A7 PLATFORM PLAN DETAIL
1.A405 SCALE: 1 1/2" = 1'-0"



A9 PLATFORM PLAN DETAIL
1.A405 SCALE: 1 1/2" = 1'-0"

Order Plans @

coast
architects
671 St. Andrews Blvd Charleston, SC 29407
Phone: 843.763.7064 Fax: 843.763.7061
www.coastarchitects.net



BOATING CENTER REDEVELOPMENT -
SWAIN BOATING CENTER
H09-9617-PG-C
CITADEL 11 HAMMOND AVENUE
CHARLESTON, SC
THE MILITARY COLLEGE OF SOUTH CAROLINA

Revisions	
Rev. No.	Rev. Date

DRAWN BY: LWM
CHECKED BY: FAM
DATE: 06.01.2018
COAST PROJECT NO: 1722.00
BOAT HOUSE HVAC PLATFORM PLANS, SECTIONS AND DETAILS
1.A405

BID DOCUMENTS