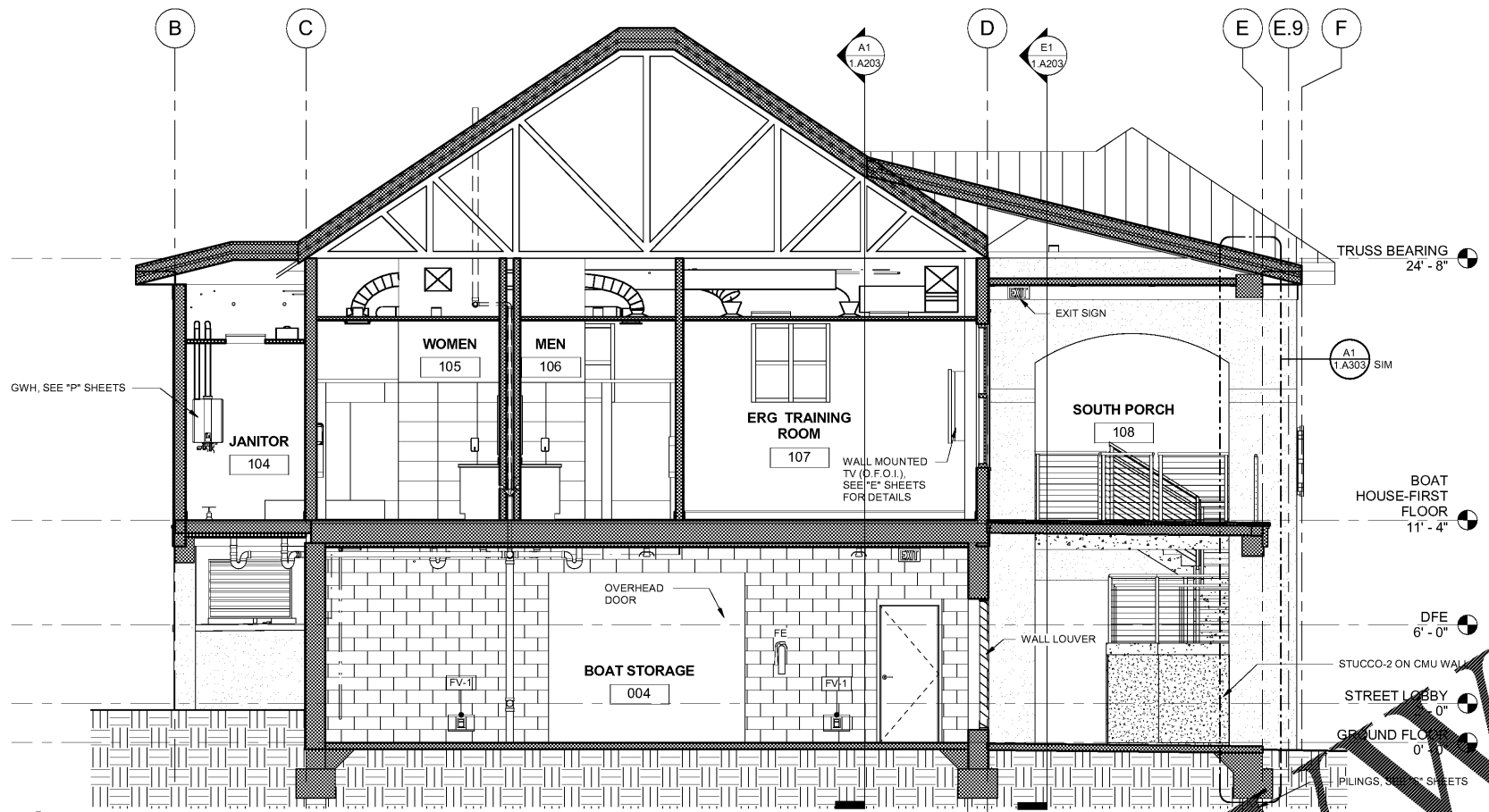
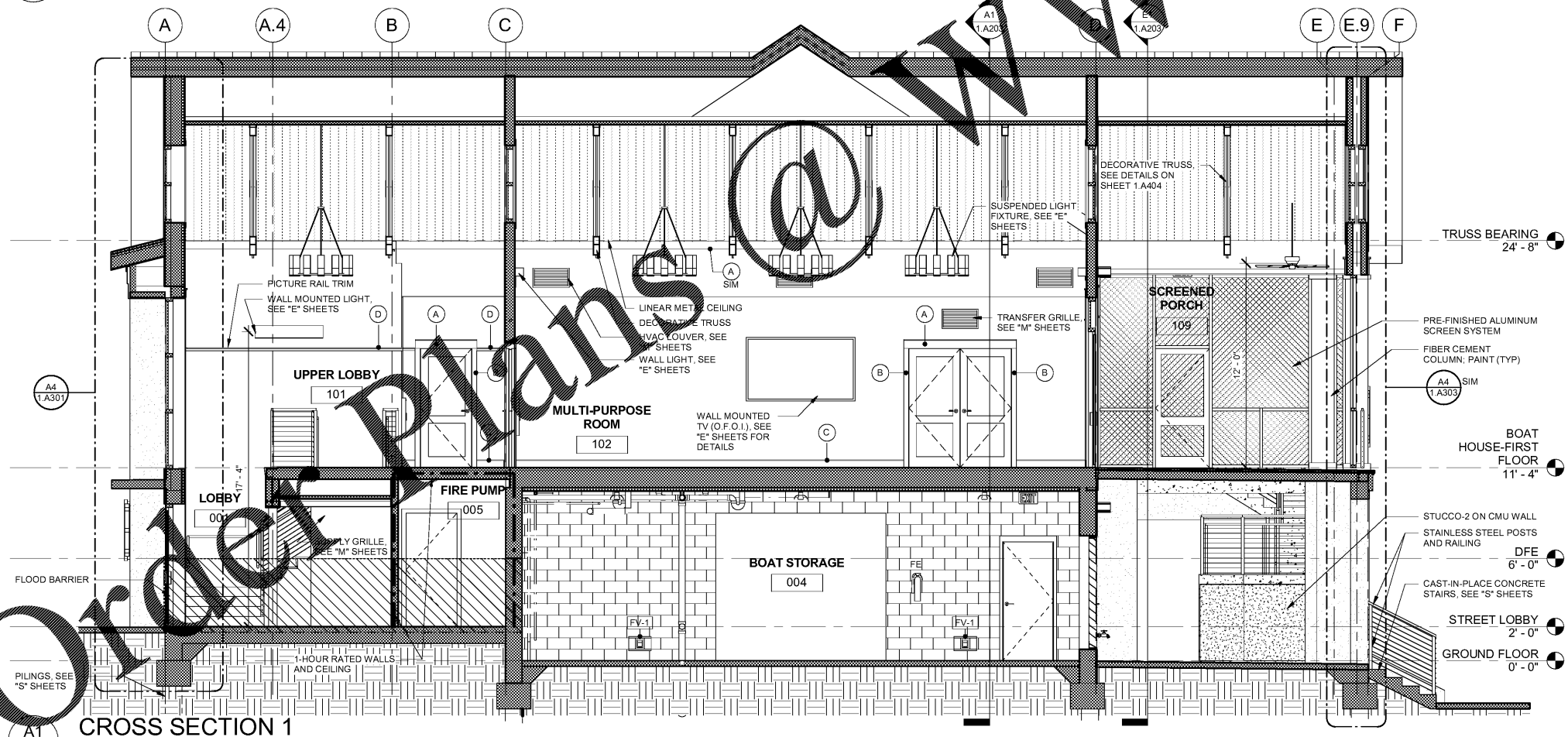


ALL DESIGNS, DRAWINGS AND SPECIFICATIONS DEPICTED ON THIS SHEET ARE PROPERTY OF COAST ARCHITECTS, INC. COPYRIGHT © 6/1/2018 ANY UNAUTHORIZED USE OR REPRODUCTION IS SUBJECT TO LEGAL PROSECUTION. POSSESSION IN ANY FORM CONSTITUTES ACCEPTANCE OF THESE CONDITIONS.



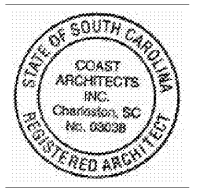
E1
1.A204
CROSS SECTION 2
SCALE: 1/4" = 1'-0"



A1
1.A204
CROSS SECTION 1
SCALE: 1/4" = 1'-0"

LDI Line .com

coast
architects
671 St. Andrews Blvd Charleston, SC 29407
Phone: 843.763.7064 Fax: 843.763.7061
www.coastarchitects.net



**BOATING CENTER REDEVELOPMENT -
SWAIN BOATING CENTER**
H09-9617-PG-C

CITADEL
11 HAMMOND AVENUE
CHARLESTON, SC

Revisions	
Rev. No.	Rev. Date

DRAWN BY: MCC
CHECKED BY: FAM
DATE: 06.01.2018
COAST PROJECT NO: 1722.00

**BOAT HOUSE
BUILDING
SECTIONS**

1.A204

BID DOCUMENTS