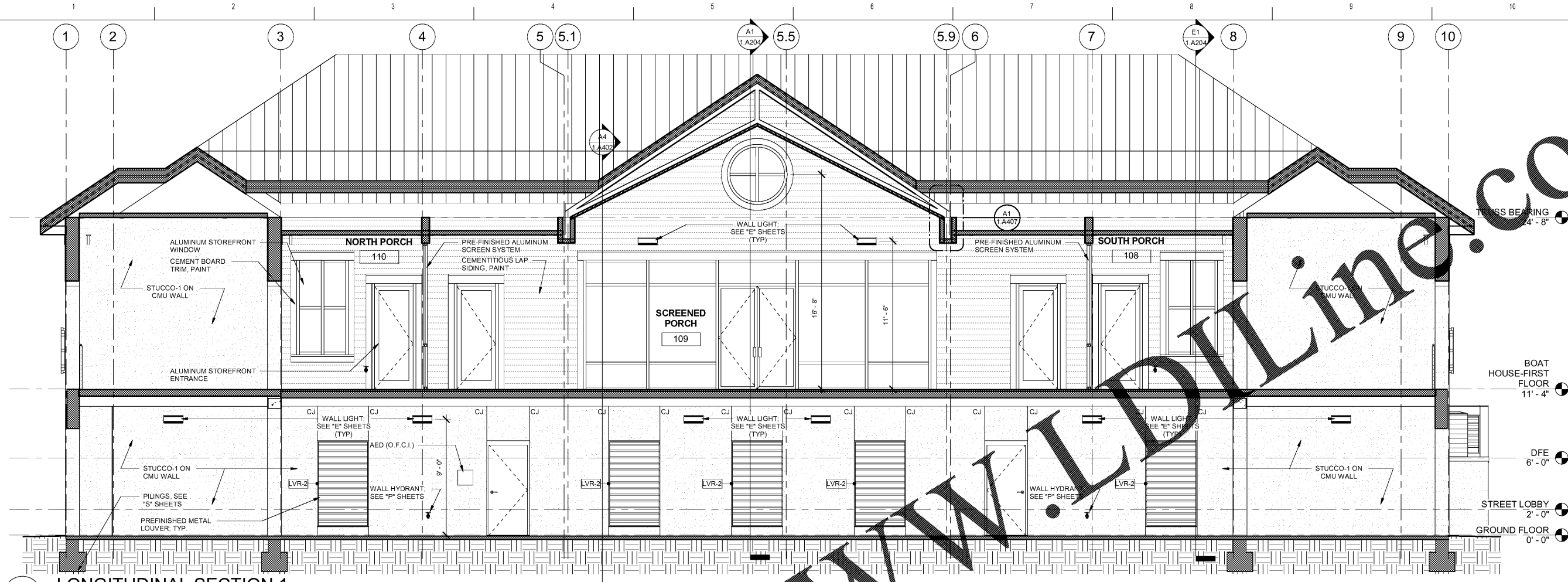
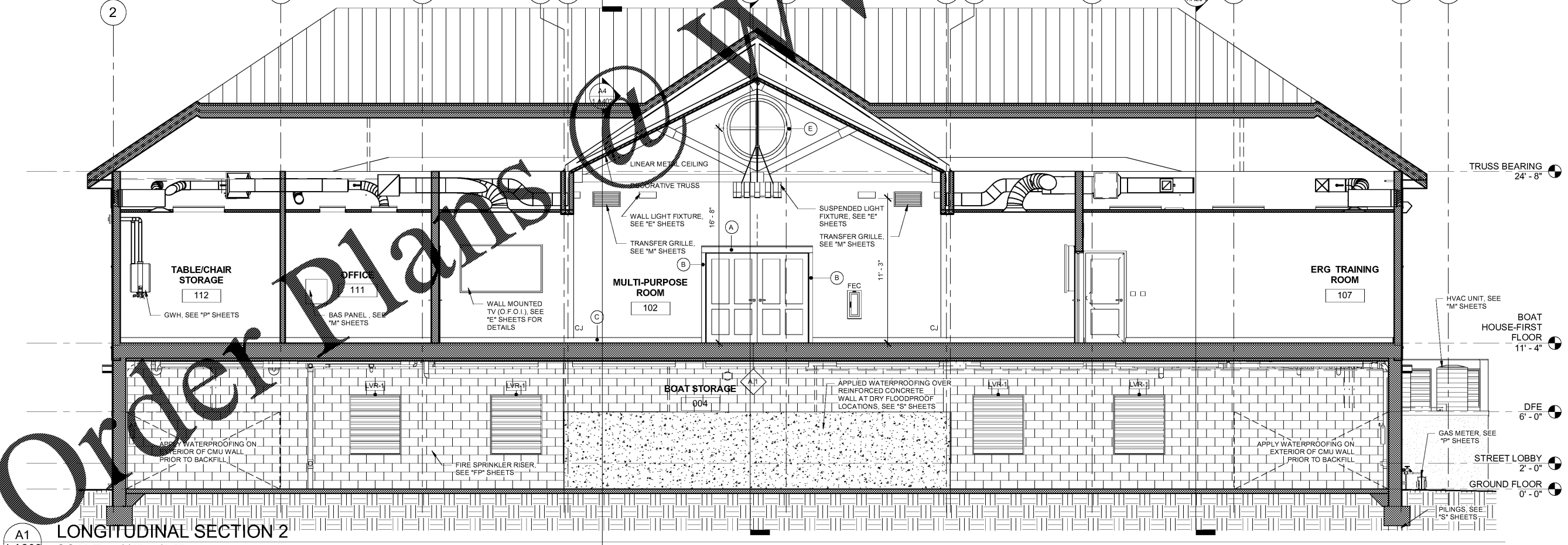


ALL DESIGNS, DRAWINGS AND SPECIFICATIONS DEPICTED ON THIS SHEET ARE PROPERTY OF COAST ARCHITECTS, INC. COPYRIGHT © 6/1/2018 ANY UNAUTHORIZED USE OR REPRODUCTION IS SUBJECT TO LEGAL PROSECUTION. POSSESSION IN ANY FORM CONSTITUTES ACCEPTANCE OF THESE CONDITIONS.  
 10:48:47 AM



**E1 1.A203**  
**LONGITUDINAL SECTION 1**  
 SCALE: 1/4" = 1'-0"



**A1 1.A203**  
**LONGITUDINAL SECTION 2**  
 SCALE: 1/4" = 1'-0"

Order Plans @ WWW.Line.co

**coast architects**  
 671 St. Andrews Blvd Charleston, SC 29407  
 Phone: 843.763.7064 Fax: 843.763.7061  
 www.coastarchitects.net



**BOATING CENTER REDEVELOPMENT - SWAIN BOATING CENTER**  
 1109-9617-PG-C  
**CITADEL** 11 HAMMOND AVENUE  
 CHARLESTON, SC  
THE MILITARY COLLEGE OF SOUTH CAROLINA

Revisions	
Rev. No.	Rev. Date

DRAWN BY: MCC  
 CHECKED BY: FAM  
 DATE: 06.01.2018  
 COAST PROJECT NO: 1722.00

**BOAT HOUSE BUILDING SECTIONS**

**1.A203**

BID DOCUMENTS