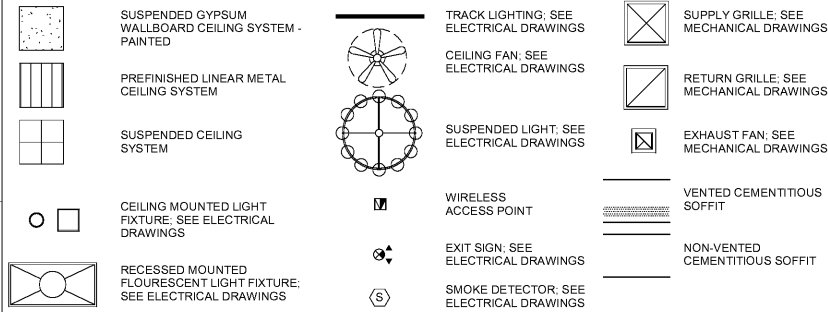


ALL DESIGNS, DRAWINGS AND SPECIFICATIONS DEPICTED ON THIS SHEET ARE PROPERTY OF COAST ARCHITECTS, INC. COPYRIGHT © 6/1/2018 ANY UNAUTHORIZED USE OR REPRODUCTION IS SUBJECT TO LEGAL PROSECUTION. POSSESSION IN ANY FORM CONSTITUTES ACCEPTANCE OF THESE CONDITIONS.

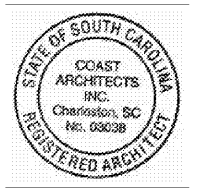
RCP SYMBOL LEGEND



REFLECTED CEILING PLAN NOTES

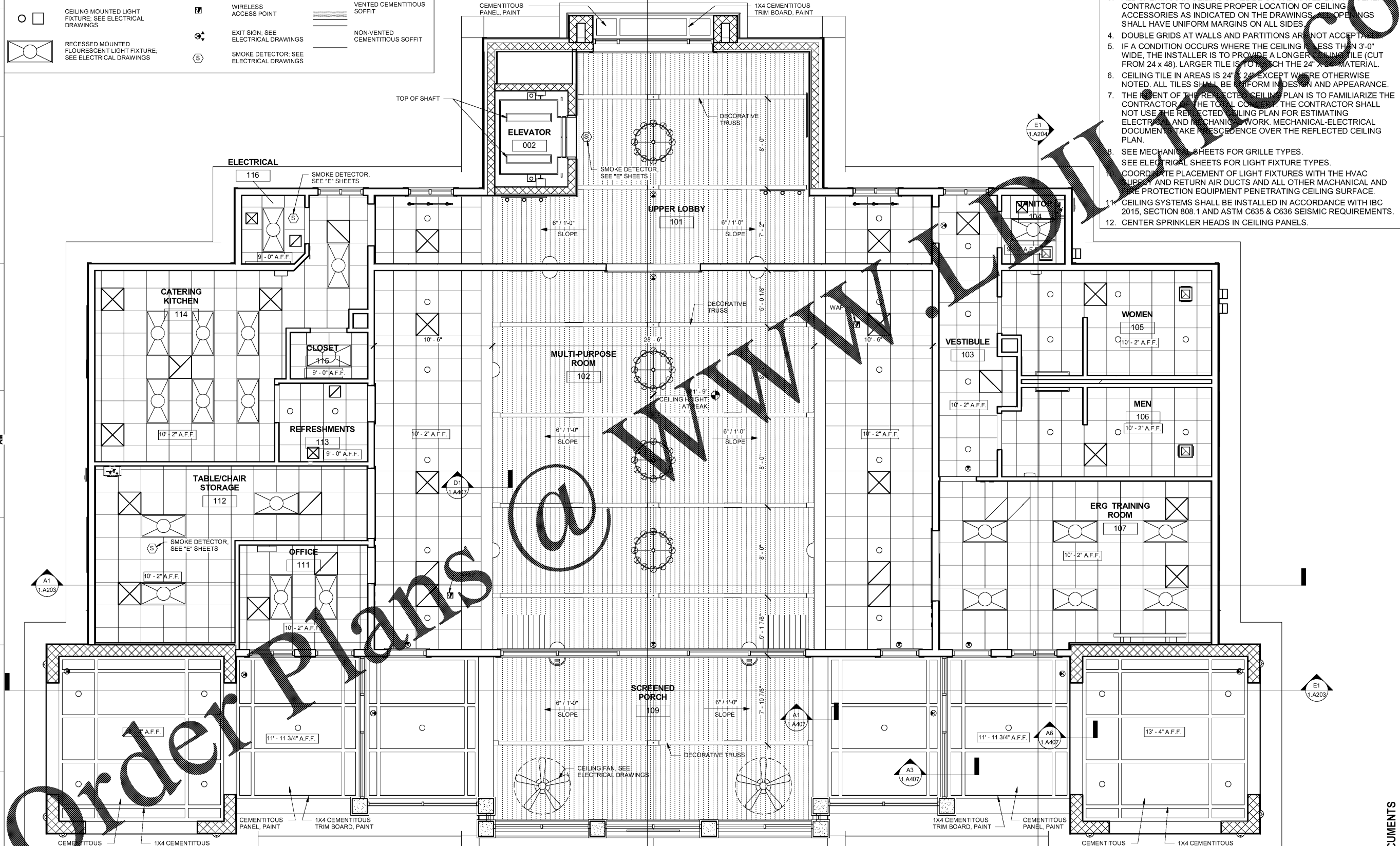
1. VERIFY ENTIRE CEILING LAYOUT IN FIELD BEFORE INSTALLATION OF ANY CEILING MATERIAL OR EQUIPMENT. ANY DEVIATION FROM THE REFLECTED CEILING PLAN SHALL HAVE PRIOR APPROVAL FROM THE ARCHITECT OR THE ARCHITECT'S REPRESENTATIVE IN THE FIELD. THE INSTALLER SHALL PROVIDE THE ARCHITECT (THROUGH THE GENERAL CONTRACTOR) A REFLECTED CEILING PLAN SHOWING ANY REQUESTED CHANGES.
2. SEE FINISH SCHEDULE FOR CEILING FINISHES AND HEIGHTS.
3. ALL OPENINGS IN CEILING SHALL BE COORDINATED BY THE GENERAL CONTRACTOR TO INSURE PROPER LOCATION OF CEILING ACCESSORIES AS INDICATED ON THE DRAWINGS. ALL OPENINGS SHALL HAVE UNIFORM MARGINS ON ALL SIDES.
4. DOUBLE GRIDS AT WALLS AND PARTITIONS ARE NOT ACCEPTABLE.
5. IF A CONDITION OCCURS WHERE THE CEILING IS LESS THAN 3'-0" WIDE, THE INSTALLER IS TO PROVIDE A LONGER CEILING TILE (CUT FROM 24 x 48). LARGER TILE IS TO MATCH THE 24" x 48" MATERIAL.
6. CEILING TILE IN AREAS IS 24" x 24" EXCEPT WHERE OTHERWISE NOTED. ALL TILES SHALL BE UNIFORM IN DESIGN AND APPEARANCE.
7. THE INTENT OF THE REFLECTED CEILING PLAN IS TO FAMILIARIZE THE CONTRACTOR WITH THE TOTAL CEILING. THE CONTRACTOR SHALL NOT USE THE REFLECTED CEILING PLAN FOR ESTIMATING ELECTRICAL AND MECHANICAL WORK. MECHANICAL-ELECTRICAL DOCUMENTS TAKE PRECEDENCE OVER THE REFLECTED CEILING PLAN.
8. SEE MECHANICAL SHEETS FOR GRILLE TYPES.
SEE ELECTRICAL SHEETS FOR LIGHT FIXTURE TYPES.
9. COORDINATE PLACEMENT OF LIGHT FIXTURES WITH THE HVAC SUPPLY AND RETURN AIR DUCTS AND ALL OTHER MECHANICAL AND PROTECTION EQUIPMENT PENETRATING CEILING SURFACE.
10. CEILING SYSTEMS SHALL BE INSTALLED IN ACCORDANCE WITH IBC 2015, SECTION 808.1 AND ASTM C635 & C636 SEISMIC REQUIREMENTS.
12. CENTER SPRINKLER HEADS IN CEILING PANELS.

coast architects
 671 St. Andrews Blvd Charleston, SC 29407
 Phone: 843.763.7064 Fax: 843.763.7061
 www.coastarchitects.net



Order Plans

DRAWING



A1 1.A103 FIRST FLOOR REFLECTED CEILING PLAN
 SCALE: 1/4" = 1'-0"

BOATING CENTER REDEVELOPMENT - SWAIN BOATING CENTER
 1109-9617-PG-C
 THE CITADEL
 THE MILITARY COLLEGE OF SOUTH CAROLINA
 11 HAMMOND AVENUE
 CHARLESTON, SC

Revisions	
Rev. No.	Rev. Date

DRAWN BY: MCC
 CHECKED BY: FAM
 DATE: 06.01.2018
 COAST PROJECT NO: 1722.00

BOAT HOUSE FIRST FLOOR REFLECTED CEILING PLAN
1.A103

BID DOCUMENTS