

ALL DESIGNS, DRAWINGS AND SPECIFICATIONS DEPICTED ON THIS SHEET ARE PROPERTY OF COAST ARCHITECTS, INC. COPYRIGHT ©2010. ANY UNAUTHORIZED USE OR REPRODUCTION IS SUBJECT TO LEGAL PROSECUTION. POSSESSION IN ANY FORM CONSTITUTES ACCEPTANCE OF THESE CONDITIONS.

PANEL M												
600 AMP MAINS SURFACE ☒												
208/120 V, 3 PH, 4 W, 60 HZ 600 AMP MAIN BKR (SHUNT TRIP TYPE)												
ALL BREAKERS SHALL HAVE A MINIMUM INTERRUPTING RATING OF 22,000 AMPS. PANEL SHALL BE PROVIDED WITH SEPARATE GROUND BUS.												
CKT No.	LOAD DESCRIPTION	BREAKERS POLE	AMP	KVA	BREAKERS AMP	POLE	LOAD DESCRIPTION	CKT No.				
1	SHUNT-TRIP CTRL	1	20		100	2	DOCK HOUSE	2				
3								4				
5								6				
7				2.8	60	2	PAVILION	8				
9								10				
11	CU-1	2	20	2.5				12				
13								14				
15	VENTLESS RANGE	3	20	8.0				16				
17								18				
19								20				
21	ELEVATOR	3	150	20	6.0	40	HP-2	22				
23								24				
25								26				
27	AHU-1	3	60	17.0	6.0	40	HP-1	28				
29								30				
31								32				
33	AHU-2	3	60	17.0	18.0	60	OAU-1	34				
35								36				
37								38				
39	PANEL "B"	3	200	38.4	50	225	3	PANEL A	40			
41								42				
TOTAL CONNECTED LOAD 186 KVA												

* SHUNT TRIP TYPE CIRCUIT BREAKER

PANEL A											
225 AMP MAINS SURFACE ☒											
208/120 V, 3 PH, 4 W, 60 HZ MLO AMP MAIN BKR											
ALL BREAKERS SHALL HAVE A MINIMUM INTERRUPTING RATING OF 22,000 AMPS. PANEL SHALL BE PROVIDED WITH SEPARATE GROUND BUS.											
CKT No.	LOAD DESCRIPTION	BREAKERS POLE	AMP	KVA	BREAKERS AMP	POLE	LOAD DESCRIPTION	CKT No.			
1	LIGHTING GND FLR	1	20	1.4	1.5	20	1	PORCH FANS	2		
3	EXTERIOR LIGHTING	1	20	1.0	1.0	20	1	OFFICE REC.	4		
5	LTS B RMS & ERG	1	20	0.8	0.4	20	1	PORCH REC.	6		
7	LTS KITCHEN&OFFICE	1	20	1.1	1.0	20	1	RM 102 REC.	8		
9	CHANDELIERS	1	20	0.8	1.8	20	1	HAND DRYER	10		
11	LTS MULTIPURPOSE	1	20	0.7	1.8	20	1	HAND DRYER	12		
13	LTS MULTIPURPOSE	1	20	0.3	0.2	20	1	MINDER ALARM	14		
15	LTS PORCH	1	20	0.8	1.8	20	1	HEAT TRACE	16		
17	LTS LOBBY	1	20	0.7					18		
19	SITE AREA LIGHTS	1	20	0.6	0.2	20	1	ELEVATOR REC.	20		
21	SITE AREA LIGHTS	1	20	0.3	0.5	20	1	ELEVATOR CAR	22		
23					0.5	20	1	DOOR ACCESS	24		
25					1.2	20	1	ELEVATOR PUMP	26		
27	AHU-3	2	50	8.5	0.4	20	1	ELEVATOR PIT	28		
29					0.8	20	1	RECEPTACLES	30		
31	AHU-4	2	50	8.5	1.5	20	1	CORD REELS	32		
33					1.5	20	1	CORD REELS	34		
35									36		
37	HP-3	2	30	4.0					38		
39	HP-4	2	40	4.6					40		
41									42		
TOTAL CONNECTED LOAD 50 KVA											

* ROUTE CIRCUIT THROUGH LIGHTING CONTROL PANEL

PANEL B											
200 AMP MAINS SURFACE ☒											
208/120 V, 3 PH, 4 W, 60 HZ MLO AMP MAIN BKR											
ALL BREAKERS SHALL HAVE A MINIMUM INTERRUPTING RATING OF 22,000 AMPS. PANEL SHALL BE PROVIDED WITH SEPARATE GROUND BUS.											
CKT No.	LOAD DESCRIPTION	BREAKERS POLE	AMP	KVA	BREAKERS AMP	POLE	LOAD DESCRIPTION	CKT No.			
1	FACP	1	20	0.5	1.0	20	1	MICROWAVE	2		
3	TELEPHONE BKBD	1	20	1.0	0.5	20	1	UNDER CTR. REF.	4		
5	WATER HEATER 1	1	20	0.2	1.0	20	1	ICE MACHINE	6		
7	WATER HEATER 2	1	20	0.2	0.2	20	1	DRINK REC.	8		
9	BAC CTRL. CAB.	1	20	0.2	1.5	20	1	COFFEE SERVICE	10		
11	TELEVISION MP RM	1	20	1.0	1.5	20	1	ICE TEA SERVICE	12		
13	TELEVISION MP RM	1	20	1.0	1.2	20	1	REACH-IN REF.	14		
15	REC. MP ROOM	1	20	0.8	1.2	20	1	REACH-IN REF.	16		
17	TELEVISION MP RM	1	20	1.0	1.2	20	1	ICE MACHINE	18		
19	REC. RM 107	1	20	0.8	0.4	20	1	KITCHEN REC.	20		
21	REC. RM 107	1	20	0.8	0.4	20	1	KITCHEN REC.	22		
23	BATHRM REC.	1	20	0.6	1.0	20	1	AIR COMPRESSOR	24		
25	WATER COOLER	1	20	0.8	1.0	20	1	CATERING REC.	26		
27	KITCHEN EXHAUST	1	20	0.4	1.0	20	1	CATERING REC.	28		
29					1.0	20	1	CATERING REC.	30		
31									32		
33									34		
35									36		
37	ENTERTAINMENT REC.	2	50	4.0	4.0	30	2	WARMING CAB.	38		
39	ENTERTAINMENT REC.	2	50	4.0	4.0	30	2	WARMING CAB.	40		
41									42		
TOTAL CONNECTED LOAD 24 KVA											

TOTAL CONNECTED LOAD 24 KVA

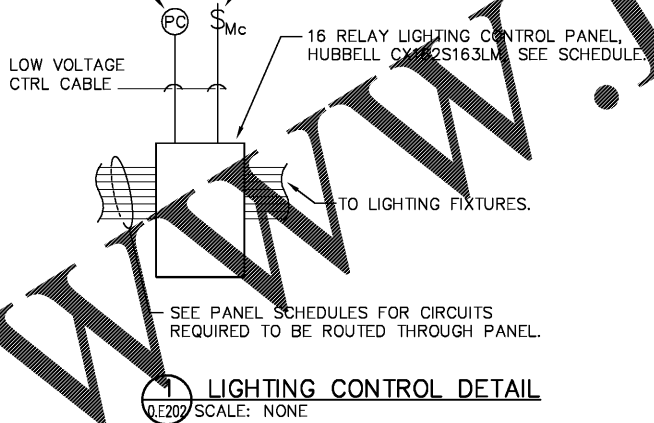
LIGHTING CONTROL PANEL SCHEDULE									
DESCRIPTION	CKT	DIM	LOAD	RELAY	RELAY	LOAD	DIM	CKT	DESCRIPTION
REAR EXTERIOR LIGHTS	A-3	NO	LED	1	2	LED	NO	A-3	ENTRANCE EXTERIOR LTS
PORCH LIGHTING	A-15	NO	LED	3	4	LED	YES	A-11	MP ROOM-RECESSED LTS
MP ROOM-CHANDELIERS	A-9	YES	LED	5	6	LED	YES	A-13	MP ROOM-RECESSED LTS
VESTIBULE 103 LTS	A-13	YES	LED	7	8	LED	NO	A-17	LOBBY LIGHTS
UPPER LOBBY LIGHTS	A-17	YES	LED	9	10	LED	YES	A-17	LOBBY TRACK LIGHTS
SITE LIGHTING	A-19	NO	LED	11	12	LED	NO	A-21	SITE LIGHTING
SPARE		YES	LED	13	14	LED	YES		SPARE
SPARE		YES	LED	15	16	LED	YES		SPARE

LIGHTING CONTROL PANEL NOTES:

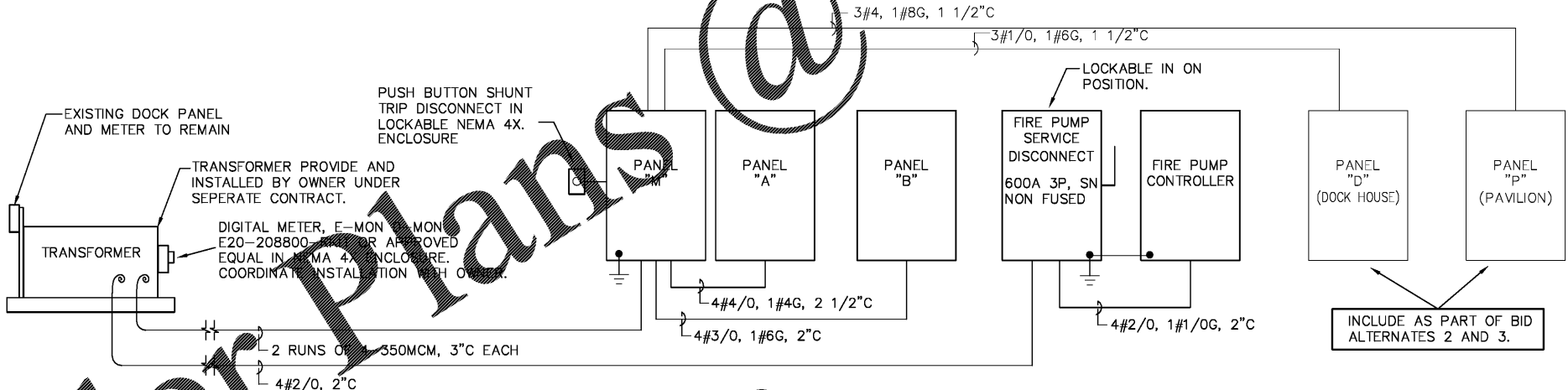
- LIGHTING CONTROL DESIGN BASIS - HUBBELL CX SERIES 16 RELAY PANNEL OR EQUAL BY LUTRON OR LC&D. PANNEL SHALL BE FULLY PROGRAMMABLE AND ALL RELAYS SHALL BE 1P, 20A, LATCHING TYPE.
- PROVIDE DIMMING MODULES COMPATIBLE WITH LOAD TYPES SHOWN. MODULES SHALL BE FULL RANGE DIMMING WITH PRESET FEATURE.
- PROVIDE ALL NECESSARY LOW VOLTAGE CABLING FOR SWITCHES/DIMMERS. SEE LIGHTING PLANS FOR LOCATIONS AND QUANTITIES. DIMMERS SHALL HAVE RAISE/LOWER FEATURE AND PRESET POSITION.
- PROVIDE INITIAL START UP, FULL PROGRAMMING AND OWNER TRAINING BY QUALIFIED MANUFACTURER'S TECHNICIAN.

HUBBELL LUXSTATLSO PHOTOCCELL. LOCATE PHOTOCCELL TO ELIMINATE FALSE ACTUATION OF LIGHTS

HUBBELL LV SERIES OVERRIDE SWITCH. MODEL CKSW-3 OR EQUAL BY LEVITON OR LUTRON. SEE PLANS FOR LOCATIONS OF CONTROL SWITCHES



1 LIGHTING CONTROL DETAIL
SCALE: NONE



2 POWER SINGLE LINE DIAGRAM
SCALE: NONE

SINGLE LINE NOTES:

- FIRE PUMP SERVICE SHALL BE RUN BELOW GROUND FLOOR CONCRETE SLAB AND TERMINATED IN FIRE PUMP CONTROLLER. MAIN CIRCUIT BREAKER IN FIRE PUMP CONTROLLER IS THE ONLY OVER CURRENT PROTECTION ALLOWED. ESTABLISH GROUND AT FIRE PUMP CONTROLLER. SEE FIRE PROTECTION PLANS FOR COORDINATION WITH FIRE PUMP INSTALLATION. FIRE PUMP DISCONNECT SHALL BE LOCKABLE IN "ON" POSITION.
- TERMINATE ALL SECONDARY WIRING IN TRANSFORMER. COORDINATE OUTAGE WITH OWNER. PROVIDE 48 HOUR NOTICE TO OWNER.
- PANEL "D" AND PANEL "P" ARE PART OF BID ALTERNATES. FEEDER CIRCUITS AND PANELS ARE NOT PART OF THE BASE BID. SEE SHEETS 2.E101 AND 3.E101 FOR BID ALTERNATE DETAILS.

Order Plans @

WWW.LDLINE.COM

coast architects
671 St. Andrews Blvd., Charleston, SC 29407
Phone: 843.763.7064 Fax: 843.763.7061
www.coastarchitects.net



DAVID F. WILSON, P.E.
1421 BRIAN ROAD
CHARLESTON, SC 29407
TEL: (843) 225-7191

BOATING CENTER REDEVELOPMENT-
SWAIN BOATING CENTER
H09-9617-PG-C

CITADEL
11 HAMMOND AVENUE
CHARLESTON, SC

THE MILITARY COLLEGE OF SCOTLAND, CAROLINA

Revisions	
Rev. No.	Rev. Date

DRAWN BY: DFW
CHECKED BY: DFW
DATE: 06.01.2018

COAST PROJECT NO.: 1722.00

ELECTRICAL
PANEL SCHEDULES
AND RISER
DIAGRAM

0.E202

BID DOCUMENTS