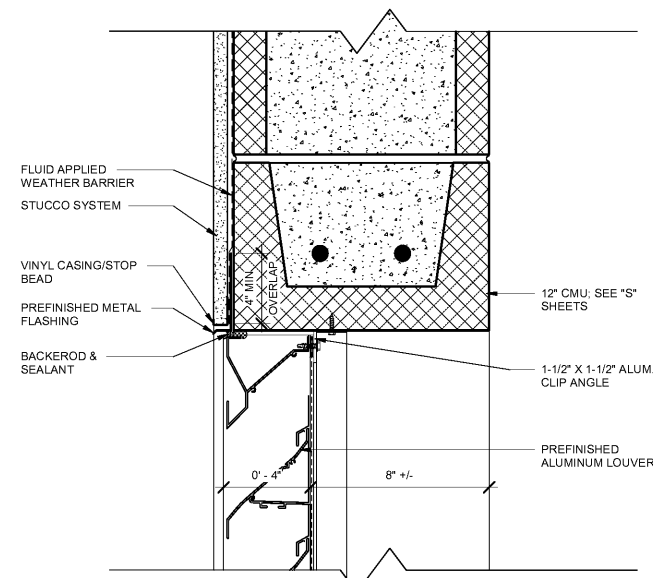
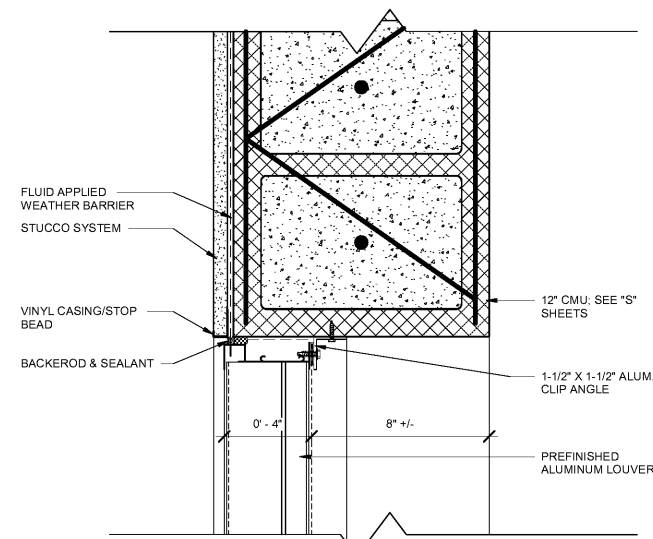


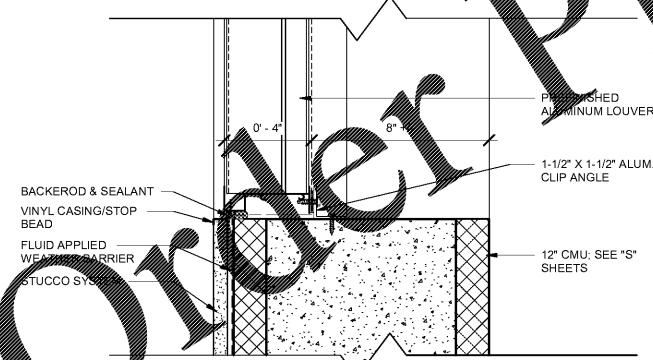
ALL DESIGNS, DRAWINGS AND SPECIFICATIONS DEPICTED ON THIS SHEET ARE PROPERTY OF COAST ARCHITECTS, INC. COPYRIGHT © 6/1/2018 10:46:37 AM ANY UNAUTHORIZED USE OR REPRODUCTION IS SUBJECT TO LEGAL PROSECUTION. POSSESSION IN ANY FORM CONSTITUTES ACCEPTANCE OF THESE CONDITIONS.



H9 LOUVER HEAD DETAIL
0.A404 SCALE: 3" = 1'-0"



J9 LOUVER JAMB DETAIL
0.A404 SCALE: 3" = 1'-0"



S9 LOUVER SILL DETAIL
0.A404 SCALE: 3" = 1'-0"

Order Plans @ WWW.LDILine.COM

coast
 architects
 671 St. Andrews Blvd Charleston, SC 29407
 Phone: 843.763.7064 Fax: 843.763.7061
 www.coastarchitects.net



**BOATING CENTER REDEVELOPMENT -
 SWAIN BOATING CENTER**
 H09-9617-PG-C
 11 HAMMOND AVENUE
 CHARLESTON, SC



Revisions	
Rev. No.	Rev. Date

DRAWN BY: LWM
 CHECKED BY: FAM
 DATE: 06.01.2018

COAST PROJECT NO: 1722.00

LOUVER DETAILS

0.A404

BID DOCUMENTS