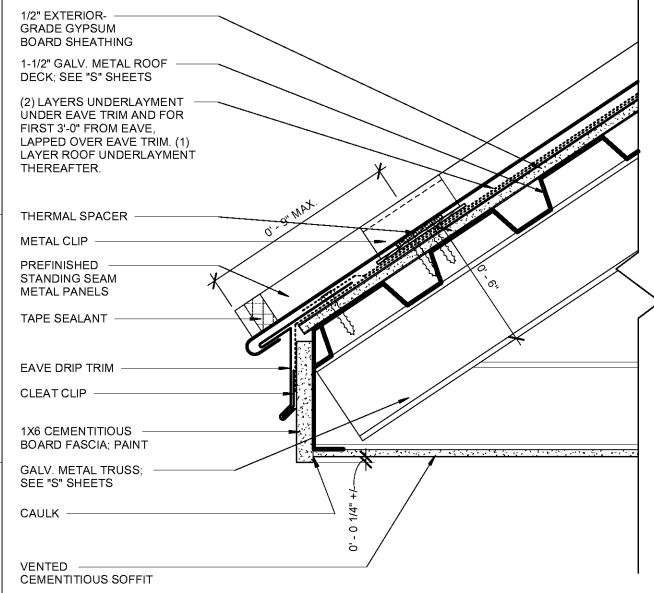
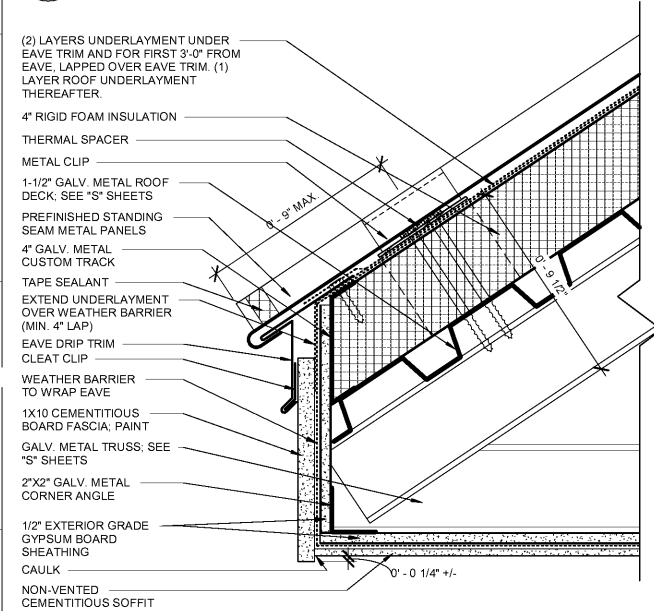


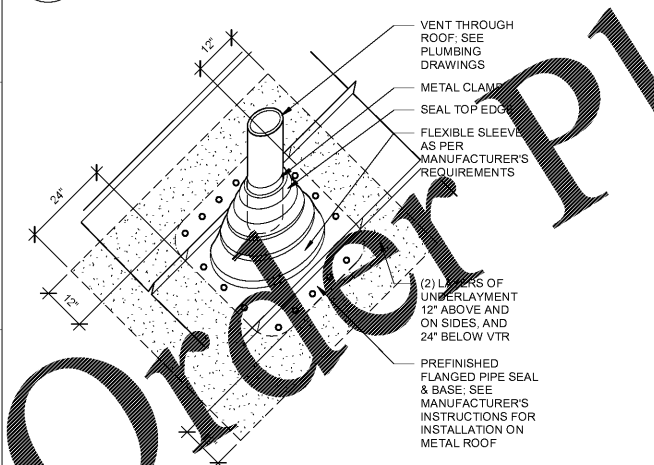
ALL DESIGNS, DRAWINGS AND SPECIFICATIONS DEPICTED ON THIS SHEET ARE PROPERTY OF COAST ARCHITECTS, INC. COPYRIGHT © 6/1/2018 ANY UNAUTHORIZED USE OR REPRODUCTION IS SUBJECT TO LEGAL PROSECUTION. POSSESSION IN ANY FORM CONSTITUTES ACCEPTANCE OF THESE CONDITIONS.



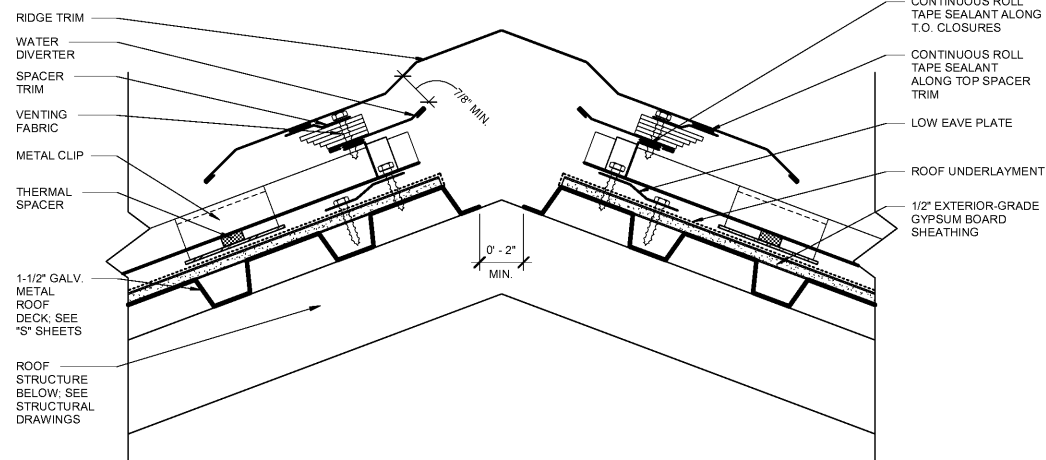
F1 EAVE DETAIL - NO INSULATION
0.A003 SCALE: 3" = 1'-0"



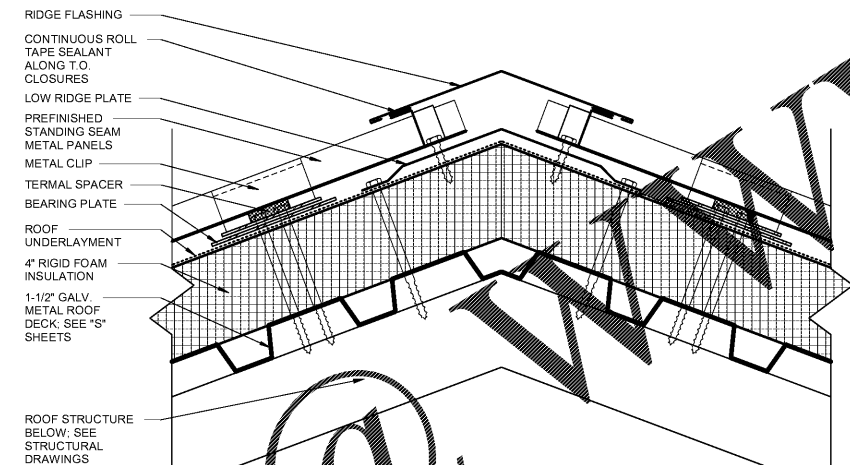
C1 EAVE DETAIL - WITH INSULATION
0.A003 SCALE: 3" = 1'-0"



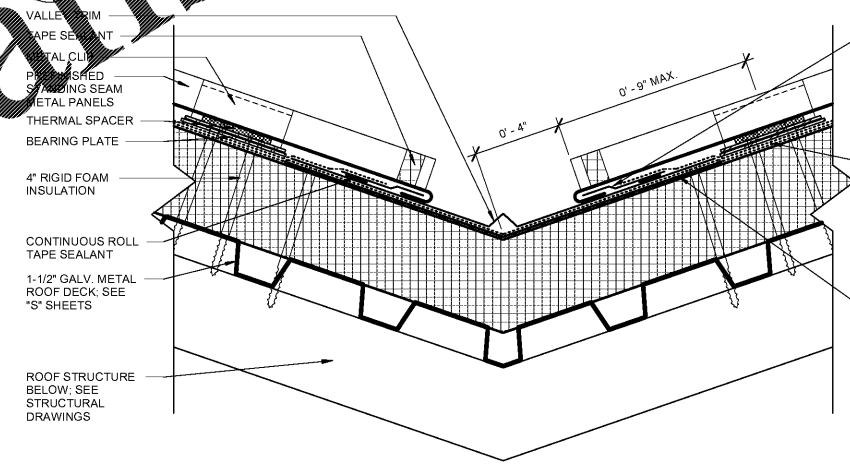
A1 VTR DETAIL
0.A003 SCALE: 1/2" = 1'-0"



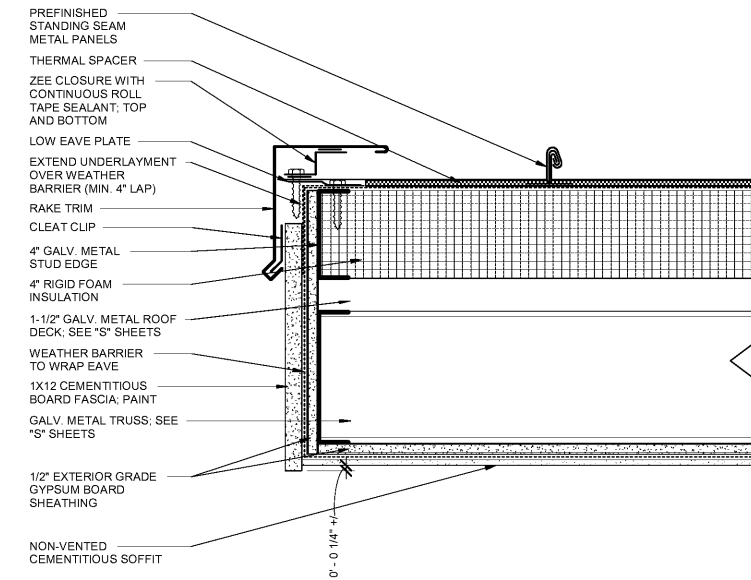
F4 RIDGE VENT DETAIL - NO INSULATION
0.A003 SCALE: 3" = 1'-0"



C4 NON-VENTILATED RIDGE/HIP CAP DETAIL - WITH INSULATION
0.A003 SCALE: 3" = 1'-0"



A4 VALLEY ROOF DETAIL
0.A003 SCALE: 3" = 1'-0"



A7 RAKE DETAIL - WITH INSULATION
0.A003 SCALE: 3" = 1'-0"

ROOF NOTES

- REFER TO SPECIFICATION FOR DETAILS ON MATERIALS AND CONSTRUCTION.
- ROOFING SUB CONTRACTOR TO COORDINATE WORK WITH OTHER TRADES AND SHALL BE RESPONSIBLE FOR FLASHING AND VAPOR TIGHTNESS OF ALL ROOF PENETRATIONS. ROOF SYSTEMS SPECIFIED SHALL BE APPLIED ONLY BY MANUFACTURER APPROVED APPLICATOR IN ORDER TO MEET WARRANTY REQUIREMENTS.
- ALL CURBS AND PIPE PENETRATIONS SHALL HAVE A MINIMUM OF 16" CLEAR FROM EACH OTHER FOR ROOF FLASHING PURPOSES. ALL EQUIPMENT SHALL HAVE A MIN. 18" CLEAR FROM ALL ADJACENT PANELS.
- CONDUCT PRE-ROOFING CONFERENCE OUTLINED IN ROOFING SPECIFICATION.

coast architects
671 St. Andrews Blvd Charleston, SC 29407
Phone: 843.763.7064 Fax: 843.763.7061
www.coastarchitects.net



BOATING CENTER REDEVELOPMENT - SWAIN BOATING CENTER
H09-9617-PG-C
CITADEL
11 HAMMOND AVENUE
CHARLESTON, SC

Revisions	
Rev. No.	Rev. Date

DRAWN BY: LWM
CHECKED BY: FAM
DATE: 06.01.2018

COAST PROJECT NO: 1722.00
ROOF DETAILS & ROOF NOTES

0.A003

BID DOCUMENTS