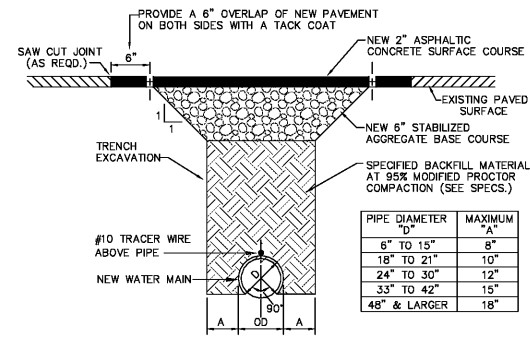
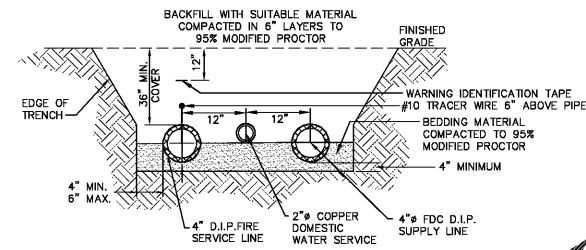


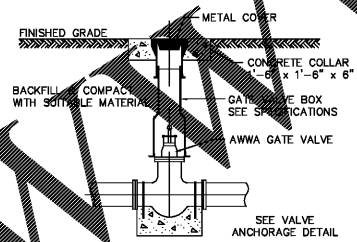
ALL DESIGNS, DRAWINGS AND SPECIFICATIONS DEPICTED ON THIS SHEET ARE PROPERTY OF COAST ARCHITECTS, INC. COPYRIGHT © 2017 ANY UNAUTHORIZED USE OR REPRODUCTION IS SUBJECT TO LEGAL PROSECUTION. POSSESSION IN ANY FORM CONSTITUTES ACCEPTANCE OF THESE CONDITIONS.



PAVEMENT TRENCHING/REPAIR DETAIL 1
NOT TO SCALE

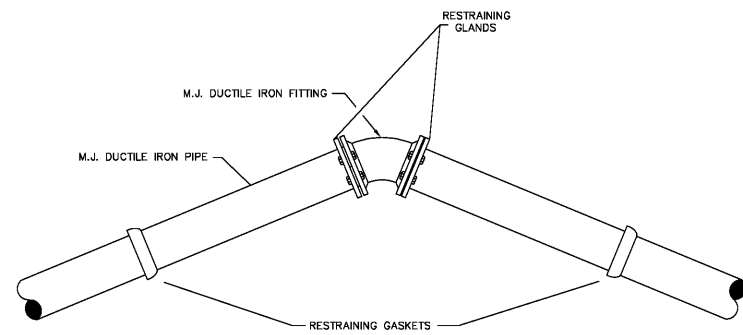


WATER MAIN TRENCH DETAIL 2
NOT TO SCALE



GATE VALVE & BOX DETAIL 3
NOT TO SCALE

- NOTES:
- THE FOLLOWING CONDITIONS WERE USED TO CALCULATE THE RESTRAINED LENGTHS:
LAYING CONDITION IS TYPE 3;
SOIL DESIGNATED AS SAND-SILT;
DEPTH IS 3 FT.;
DESIGN PRESSURE (TEST) IS 150 PSI;
SAFETY FACTOR IS 1.5.
FOR THE TEE BRANCH AND REDUCER, LENGTHS ARE BASED ON BRANCHING AND REDUCING FROM THE NEXT LARGER SIZE IN THE TABLE. DEVIATIONS FROM THESE CONDITIONS MUST BE BASED ON THE ABOVE PARAMETERS.
 - REFER TO THE MINIMUM STANDARDS FOR APPROVED PRODUCTS FOR THE RESTRAINING GLANDS AND GASKETS.

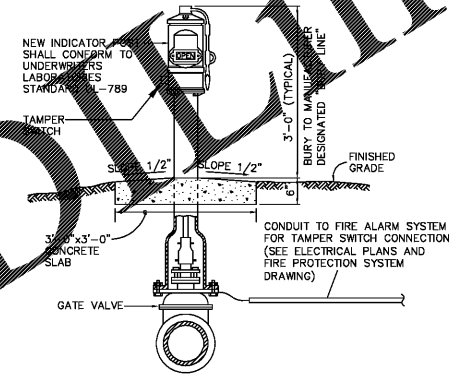


RESTRAINED JOINT FITTING (HORIZONTAL PIPE ONLY) 4
NOT TO SCALE

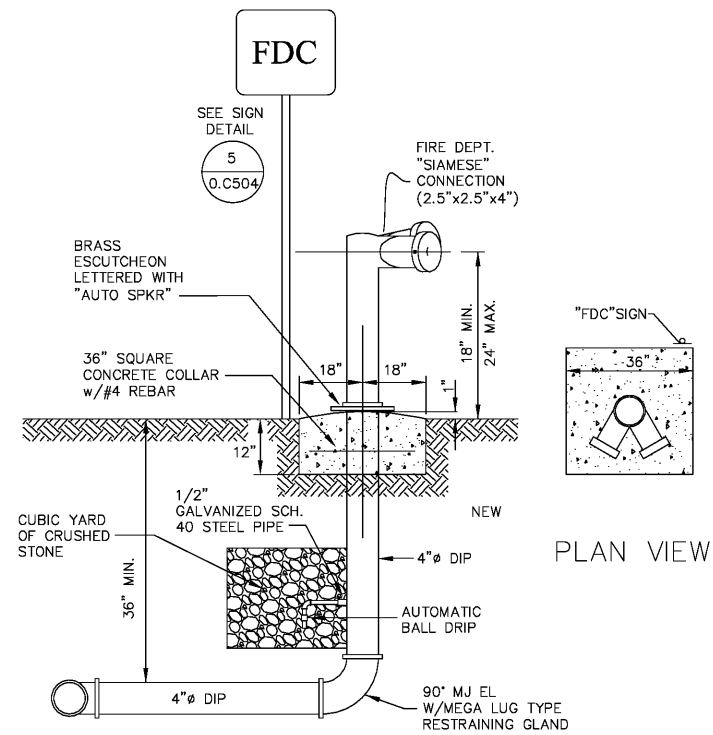


- 6" RED LETTERS READING "FDC" POSTED ON DURABLE SIGN WITH A WHITE BACKGROUND,
- 2" RED LETTER BELOW "FDC" INDICATING THE BUILDING ADDRESS.
- SIGN SHALL BE MOUNTED ABOVE THE FDC ON FENCE OR WALL AS INDICATED.
- SIGN SHALL BE VISIBLE AND UNOBSTRUCTED.

"FDC" SIGN 5
NOT TO SCALE



POST INDICATOR VALVE WITH TAMPER SWITCH 6
NOT TO SCALE

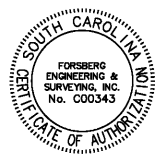


FIRE DEPARTMENT CONNECTION DETAIL 7
NOT TO SCALE

Order Plans @

WWW.LDOnline.com

coast architects
671 St. Andrews Blvd Charleston, SC 29407
Phone: 843.763.7064 Fax: 843.763.7061
www.coastarchitects.net



FORSBERG ENGINEERING AND SURVEYING, INC.
1587 SAVANNAH HIGHWAY SUITE B
CHARLESTON, SC 29405
(843) 771-2622 FAX (843) 571-4780
CIVIL ENGINEERING, SURVEYING AND LAND PLANNING

BOATING CENTER REDEVELOPMENT SWAIN BOATING CENTER H09-9617-PG-C

CITADEL 11 HAMMOND AVENUE CHARLESTON, SC

THE MILITARY COLLEGE OF SOUTH CAROLINA

Revisions	
Rev. No.	Rev. Date

DRAWN BY: MSJ
CHECKED BY: DCF
DATE: 06-01-2018
COAST PROJECT NO.: 1722.00

WATER UTILITY CONSTRUCTION DETAILS
0.C504
JOB# 4727-1

BID DOCUMENTS