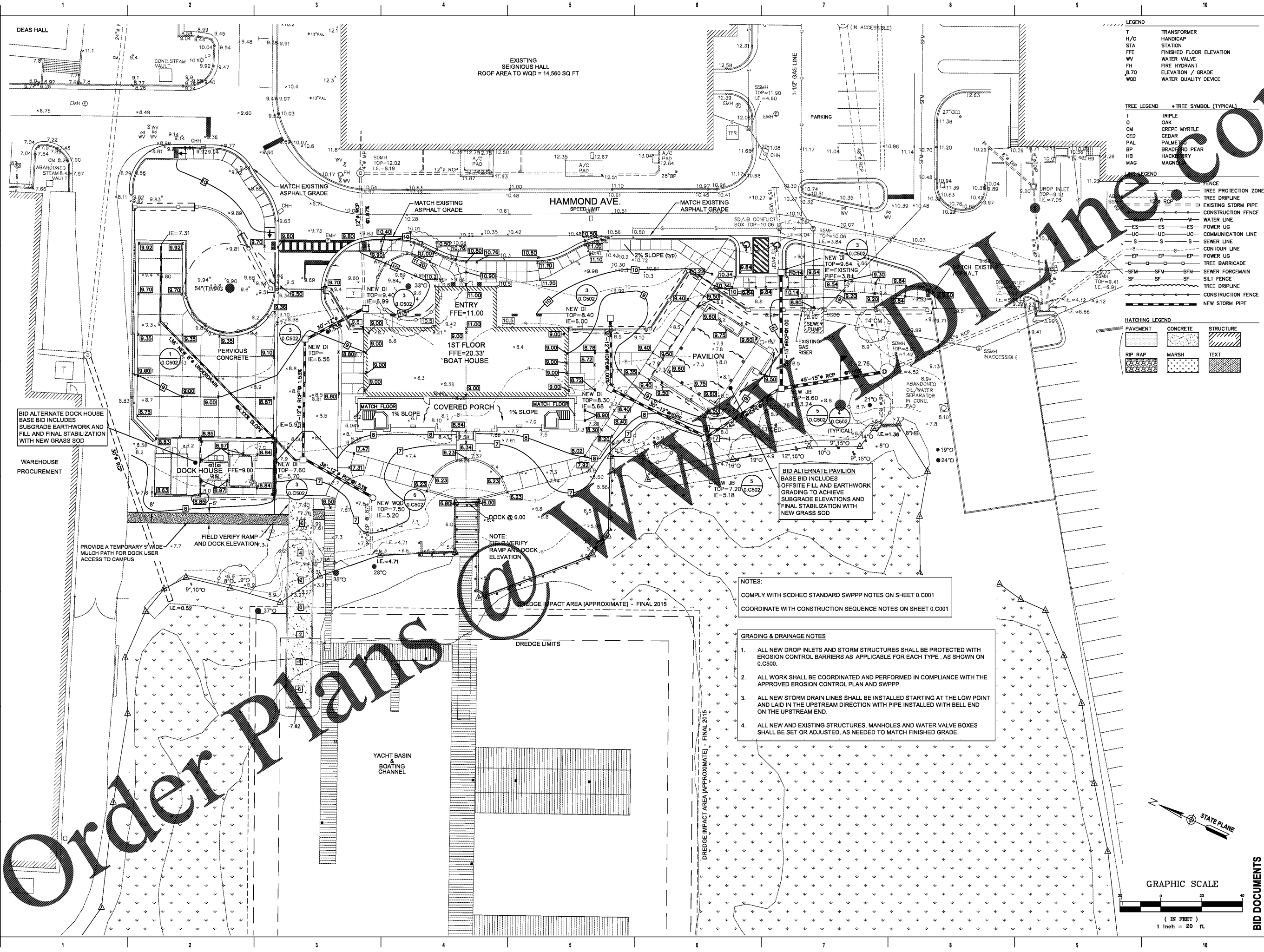


ALL DESIGNS, DRAWINGS AND SPECIFICATIONS DEPICTED ON THIS SHEET ARE PROPERTY OF COAST ARCHITECTS, INC. COPYRIGHT © 2017 ANY UNAUTHORIZED USE OR REPRODUCTION IS SUBJECT TO LEGAL PROSECUTION. POSSESSION IN ANY FORM CONSTITUTES ACCEPTANCE OF THESE CONDITIONS.



BID ALTERNATE DOCK HOUSE
BASE BID INCLUDES
SUBGRADE EARTHWORK AND
FILL AND FINAL STABILIZATION
WITH NEW GRASS SOD

BID ALTERNATE PAVILION
BASE BID INCLUDES
OFFSITE FILL AND EARTHWORK
GRADING TO ACHIEVE
SUBGRADE ELEVATIONS AND
FINAL STABILIZATION WITH
NEW GRASS SOD

NOTES:
COMPLY WITH SCDEH STANDARD SWPPP NOTES ON SHEET 0.C001
COORDINATE WITH CONSTRUCTION SEQUENCE NOTES ON SHEET 0.C001

- GRADING & DRAINAGE NOTES**
1. ALL NEW DROP INLETS AND STORM STRUCTURES SHALL BE PROTECTED WITH EROSION CONTROL BARRIERS AS APPLICABLE FOR EACH TYPE, AS SHOWN ON 0.C500.
 2. ALL WORK SHALL BE COORDINATED AND PERFORMED IN COMPLIANCE WITH THE APPROVED EROSION CONTROL PLAN AND SWPPP.
 3. ALL NEW STORM DRAIN LINES SHALL BE INSTALLED STARTING AT THE LOW POINT AND LAID IN THE UPSTREAM DIRECTION WITH PIPE INSTALLED WITH BELL END ON THE UPSTREAM END.
 4. ALL NEW AND EXISTING STRUCTURES, MANHOLES AND WATER VALVE BOXES SHALL BE SET OR ADJUSTED, AS NEEDED TO MATCH FINISHED GRADE.

LEGEND

T	TRANSFORMER
H/C	HANDICAP STATION
STA	FINISHED FLOOR ELEVATION
FFE	WATER VALVE
WV	FIRE HYDRANT
EH	ELEVATION / GRADE
8.70	WATER QUALITY DEVICE
WQD	

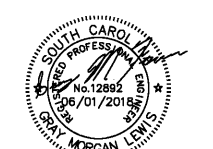
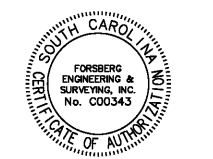
TREE LEGEND

•	TREE SYMBOL (TYPICAL)
T	TRIPLE OAK
O	CREPE MYRTLE
CM	CEDAR
CED	PALM TREE
PAL	BRADSHAW PEAR
SP	HACKBERRY
HB	MAGNOLIA
MAG	

HATCHING LEGEND

[Pattern]	PAVEMENT
[Pattern]	CONCRETE
[Pattern]	STRUCTURE
[Pattern]	GRASS
[Pattern]	MARSH
[Pattern]	TEXT

coast architects
671 St. Andrews Blvd. Charleston, SC 29407
Phone: 843.763.7064 Fax: 843.763.7061
www.coastarchitects.net



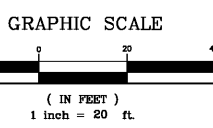
FORSBERG ENGINEERING AND SURVEYING, INC.
1587 SAVANNAH HIGHWAY SUITE B
P.O. BOX 30575
CHARLESTON, SOUTH CAROLINA 29417
(843) 571-2622 FAX (843) 571-6780
CIVIL ENGINEERING, SURVEYING AND LAND PLANNING

**BOATING CENTER REDEVELOPMENT
SWAIN BOATING CENTER
H09-9617-PG-C**
11 HAMMOND AVENUE
CHARLESTON, SC

Revisions	
Rev. No.	Rev. Date

DRAWN BY: WFS
CHECKED BY: DCF
DATE: 06-01-2018
COAST PROJECT NO: 1722.00

GRADING & DRAINAGE PLAN
0.C301
JOB# 4727-1



Order Plans