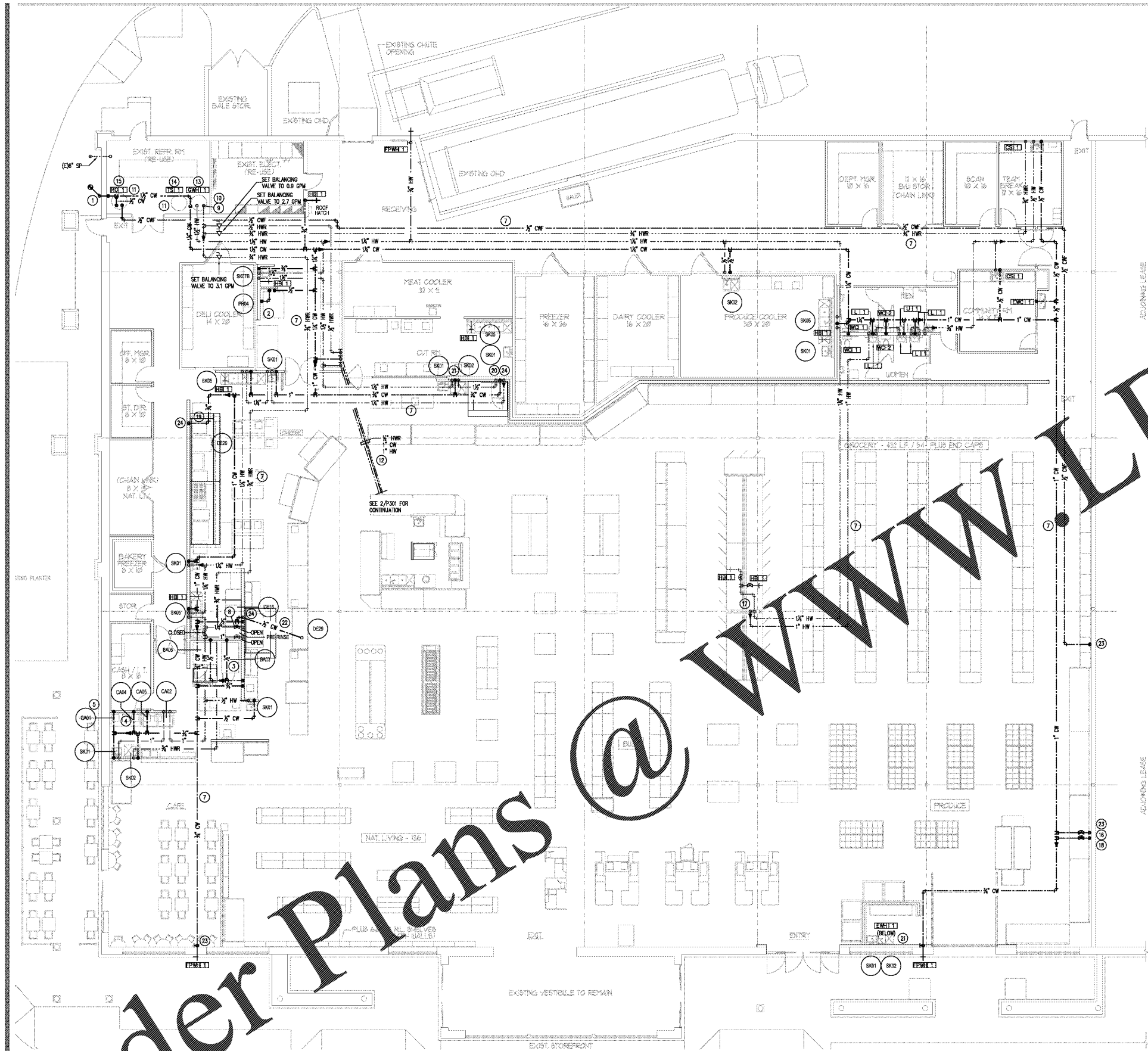


Order Plans @

WWW.LDILLING.COM



HOT WATER MAIN DROP DISTANCE

WHERE HOT WATER MAIN IS LOOPED DOWN TO NON-PUBLIC LAVATORY FIXTURES, IT SHALL BE EXTENDED TO WITHIN A DISTANCE SO RUN-OUTS FROM IT TO FIXTURES SHALL NOT EXCEED THE MAXIMUMS NOTED BELOW AS REQUIRED BY 2017 FLORIDA BUILDING CODE - ENERGY CONSERVATION TABLE C404.5.1

1/2"	45'
3/4"	24'
1"	13'
1-1/4"	8'
1-1/2"	6'

WHERE HOT WATER MAIN IS LOOPED DOWN TO PUBLIC LAVATORY FIXTURES, IT SHALL BE EXTENDED TO WITHIN 2' OF THE FIXTURES AS REQUIRED BY 2017 FLORIDA BUILDING CODE - ENERGY CONSERVATION TABLE C404.5.1. NOTE THAT RUN-OUT SIZE SHALL NOT EXCEED 1/2".

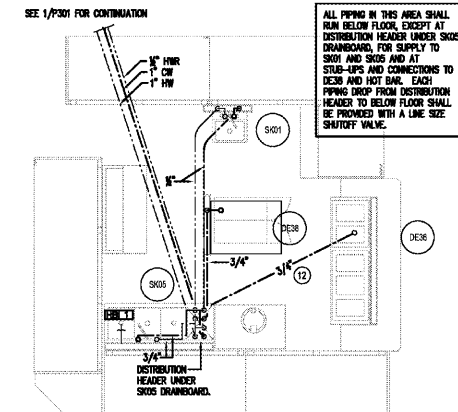
1 WATER PLAN
P301 1/8" = 1'-0"

MIXING VALVE NOTE

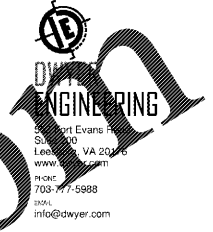
ALL LAVATORIES AND HAND SINKS SHALL BE PROVIDED WITH ASSE 1070 MIXING VALVES WITH INTEGRAL CHECKS - SEE PLUMBING FIXTURE SCHEDULE ON SHEET P1011. SET OUTLET TEMPERATURE TO 105 DEGREES, OR AS OTHERWISE REQUIRED BY JURISDICTION - VERIFY.

NUMBERED NOTES

- Connect new domestic cold water piping to existing domestic cold water piping. Verify size and location of existing piping prior to construction, and report any problems to engineer.
- 1/2" cold water piping thru water filter, thru backflow preventer and to ice maker. Coordinate filter and backflow preventer installation heights and locations with general contractor, filter supplier and local jurisdiction, prior to construction, and provide as directed. Coordinate filter spec with filter and ice maker suppliers, prior to construction, and provide as directed.
- 3/4" cold water piping thru water filter, thru backflow preventers and to oven and cooler. Coordinate filter and backflow preventer installation heights and locations with Lucky's construction manager, general contractor, filter supplier and local jurisdiction, prior to construction, and provide as directed. Coordinate filter spec with filter, oven and cooler suppliers, prior to construction, and provide as directed.
- 1/2" cold water piping thru water filter, thru backflow preventer and to espresso machine. Coordinate filter and backflow preventer installation height and location with Lucky's construction manager, general contractor, filter supplier and local jurisdiction, prior to construction, and provide as directed. Coordinate filter spec with filter and espresso machine suppliers, prior to construction, and provide as directed.
- 1/2" cold water piping thru water filter, thru backflow preventer and to coffee maker. Coordinate filter and backflow preventer installation height and location with Lucky's construction manager, general contractor, filter supplier and local jurisdiction, prior to construction, and provide as directed. Coordinate filter spec with filter and coffee machine suppliers, prior to construction, and provide as directed.
- Run piping on outside of masonry exterior walls.
- Run piping up in joist voiding piping run with electrical, mechanical, structural, refrigeration and existing conditions, prior to construction, and provide as directed. Do not run piping over lights or electrical conduits, thru door hatch area, over refrigeration racks or under roof top units.
- Provide an install pressure reducing valve (PRV) and pressure gauge via outlet side serving dishwasher. Set outlet pressure to 20 psi (Detail 8 on Sheet P501).
- Run 1-1/2" hot water, 1-1/2" cold water and 1" recirculated hot water to water heater. See detail on Sheet P-501.
- Combine into 1 1/2" header. See water heater detail on Sheet P-501 for construction.
- Install on 6" concrete maintenance pad, by GC.
- Piping below floor.
- Water heater. See detail on Sheet P-501.
- Hot water reheat tank. See detail on Sheet P-501.
- Reverse osmosis system/tank. Coordinate specification with Lucky's construction manager, general contractor and R/O dispenser supplier, prior to construction, and provide as directed.
- Run piping down in wall and extend to produce case mixers. Coordinate all requirements with Lucky's construction manager, general contractor, refrigeration contractor and produce case supplier, prior to construction, and provide as required.
- Hose bibb on top of frozen food case. Coordinate final location with Lucky's construction manager, general contractor and architect, prior to construction, and provide as directed.
- Drop piping down in wall behind case, and provide shutoff valve and connect to case quick disconnect. Coordinate all requirements with Lucky's construction manager, general contractor and refrigeration contractor, prior to construction, and provide as directed.
- 1/4" cold water piping thru water filter, thru backflow preventer and to each (of two) double steamers. Coordinate filter and backflow preventer installation heights and locations with general contractor, architect, Lucky's construction manager, filter supplier and local jurisdiction, prior to construction, and provide as directed. Coordinate filter spec with filter and double steamer suppliers, prior to construction, and provide as directed.
- Drop piping down in framed wall, thru meat cut box wall, and extend cut room exposed on wall to fixtures.
- Run piping in low wall to sinks.
- 3/8" cold water thru water filter, thru backflow preventer and down to below floor. Extend under floor and turn up under hot food bar. Drop and underbar runs shown for general scope mitigation only. Coordinate final drop and stub-up locations with Lucky's construction manager, general contractor and refrigeration contractor, prior to construction, and provide as directed. (Note that this is a separate line from the unfiltered line that is to drop adjacent to serve the premises.)
- Paint pipe to match that of wall - coordinate.
- Water piping within 18" of mechanical hood must be insulated with noncombustible Owens Corning No-Wrap.

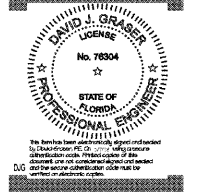


2 GRAB AND GO WATER DETAIL
P301 1/4" = 1'-0"



Lucky's Market

LUCKY'S MARKET
6420 NAPLES BLVD.
NAPLES, FLA. 34109



REVISIONS

PERMIT ISSUE
APRIL 27, 2019
BID ISSUE 04/27/19
STORE NUMBER
57
WD PROJECT NUMBER
LKYUP001

P301

WATER PLAN