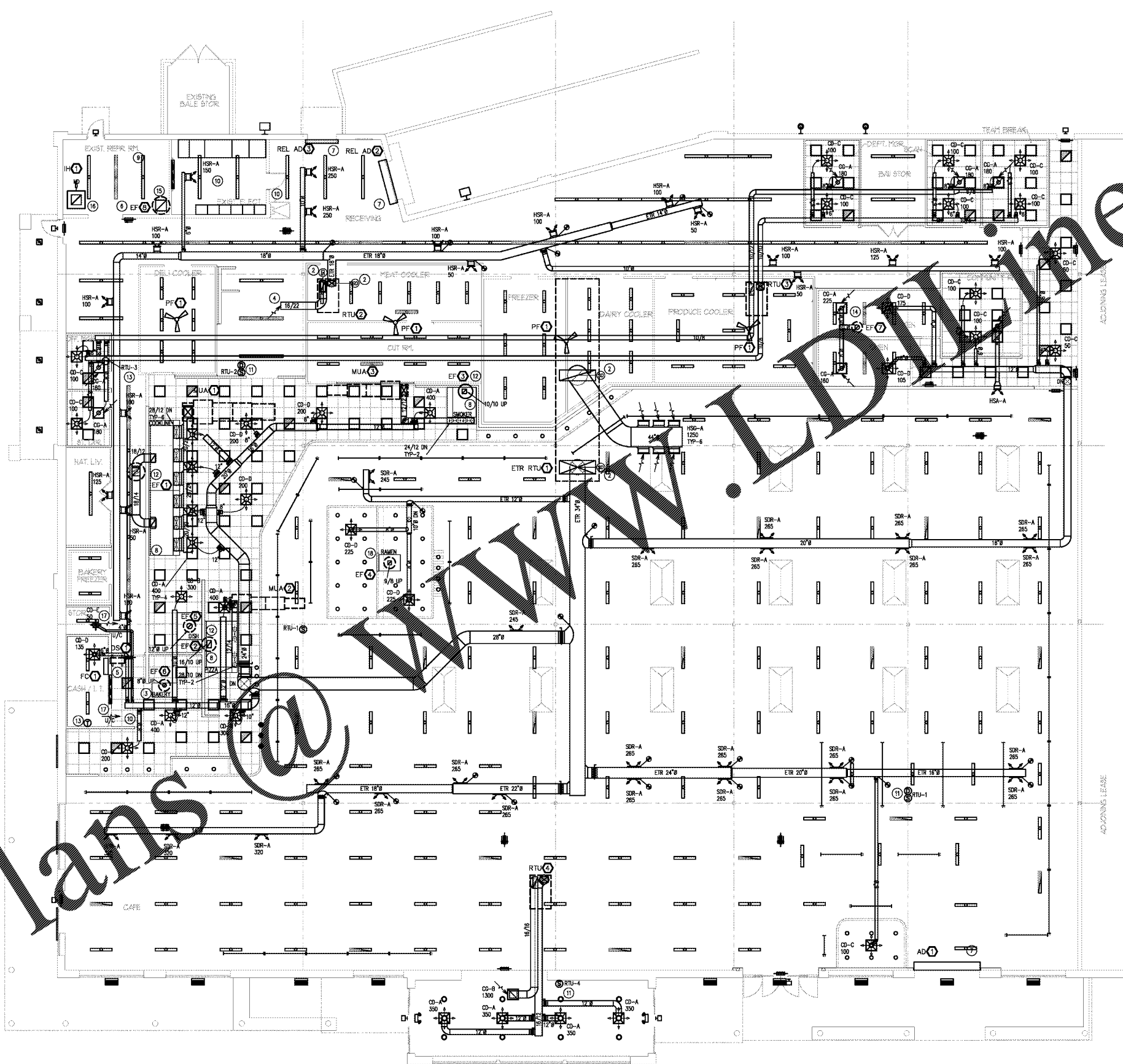
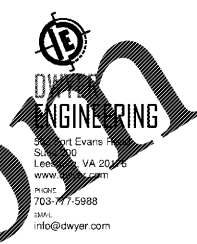


NUMBERED NOTES

- 1 Coordinate steel area ductwork with lights, verify in field. Ductwork shall be exposed. Ductwork shall be provided with a paint grip finish and shall be painted in field by GC, coordinate with architect. All taps and branches shall be continuously welded, in field.
- 2 Relocate duct smoke detector in supply and return duct to shut down the unit in the event of fire. Detectors shall be compatible with new fire alarm. Verify in field and report problems to engineer. Smoke detectors and remote indicating/test/reset stations provided by fire alarm contractor. Smoke detectors installed in duct by MC. Verify operation of REL smoke detectors in field and report problems to tenant.
- 3 Connect MetalFab PIC (1" air insulated) duct to collar at bakery oven hood and extend up through roof, transition to 8" connection. Maintain 6" clearance from duct to combustibles.
- 4 Terminate duct open with hardware screen.
- 5 High wall ductless split system. Coordinate exact location and mounting height with architect prior to installation. See plumbing drawings for condensate information.
- 6 PWT, DTE and combustion air pipes serving sealed combustion gas water heaters. Follow manufacturer's requirements for pipe sizes after exact lengths and quantity of elbows are determined in field. Slope horizontal offsets to drain back to water heater. Terminate at m/c's concrete vent fan.
- 7 Coordinate REL fire door installation with ETR roll-up door. ETR roll-up door to have motor safe mounted.
- 8 See sheets M-501 and M-502 for hood exhaust duct sizes and details.
- 9 Coordinate roof penetrations and rain curbs with refrigeration contractor prior to installation. Also confirm location and height of ducts in relation to refrigerant piping with refrigeration contractor prior to construction.
- 10 Do not run ducts or pipes over electric panels or roof hatch.
- 11 Zone sensor wired back to building EMS system, see sheet RC-101 for additional information. Coordinate exact location and mounting height with architect prior to installation.
- 12 Kitchen exhaust fan, installed level on roof curb. Fan shall terminate shall be minimum 42" above roof. Outdoor air intakes shall be 10'-0" away horizontal or 3'-0" below exhaust terminations.
- 13 Thermostats on wall at 60" AFF, verify mounting height with tenant and architect.
- 14 Customer restroom exhaust fan, installed level on curb. Termination shall be min. 10'-0" from all OA intakes, see sheet M-501 for additional information.
- 15 Motor Room fan, installed level on curb. See Motor Room notes on this sheet and schedule on sheet M-102 for additional information.
- 16 Motor Room intake hood installed level on m/c's insulated curb. Exact location shall be coordinated with structure, see schedule on sheet M-102. Install mounted damper in 24"/24" duct in Motor Room. Extend ductwork minimum 24" below roof joists.
- 17 Door shall be undercut for make-up/relief fan.
- 18 Ramen/Dish hood fans, installed level on curb. See schedule on sheet M-102 for additional information.



MECHANICAL PLAN
1/8" = 1'-0"



Lucky's Market

LUCKY'S MARKET
6420 NAPLES BLVD.
NAPLES, FLA. 34108



REVISIONS

PERMIT ISSUE
APRIL 27, 2018
BID ISSUE 04/27/18
STORE NUMBER
57
WD PROJECT NUMBER
LKYUP011

M201
MECHANICAL PLAN

Order Plans @ www.dwyer.com