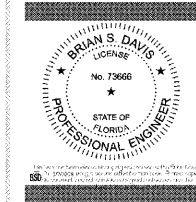


KEYED NOTES	
1	DISCONNECT SWITCH PROVIDED WITH UNIT AND WIRED BY ELECTRICAL CONTRACTOR.
2	208 VOLT, 3 POLE, NEMA 3R, 60 AMP, FUSED SAFETY SWITCH, FUSED AT 40 AMPS.
3	208 VOLT, 3 POLE, NEMA 3R, 30 AMP, FUSED SAFETY SWITCH, FUSED AT 25 AMPS.
4	208 VOLT, 2 POLE, NEMA 3R, 30 AMP, FUSED SAFETY SWITCH, FUSED AT 20 AMPS.
5	RUN 2 #12 PLUS GROUND IN SEPARATE 3/4" CONDUIT DOWN TO HOOD CONTROL PANEL FOR MUA COMPONENTS. SHEET E101-M FOR ADDITIONAL INFORMATION.
6	INDOOR UNITS MUST BE PROVIDED WITH WEATHER PROOF CONTROL PANEL AND WIRE AS NEEDED TO FEED AND CONTROL OUTDOOR UNIT PER MANUFACTURER'S INSTRUCTIONS.
7	EXHAUST FAN SHALL BE CONTROLLED VIA EMS SYSTEM TO RUN ONLY DURING OCCUPIED HOURS.
8	CONTACTOR PROVIDED WITH WEATHER PROOF CONTROL PANEL AND DOOR ACTIVATED DISCONNECT SWITCH.
9	FAN AND MOTORIZED DAMPER CIRCUITS SHALL BE RUN THROUGH A CONTACTOR. SEE DETAIL 2/E104. COORDINATE WITH HUSSMANN CONTROL DRAWINGS.
10	CIRCUIT SHALL BE RUN THROUGH HOOD CONTROL PANEL FOR FAN CONTROL. SEE SHEETS E602-E603 FOR HOOD WIRING DIAGRAMS.
11	FAN SHALL BE POWERED FROM BAKERY OVEN. COORDINATE WITH MANUFACTURER'S INSTALLATION INSTRUCTIONS. SEE SHEET E601 FOR MORE INFORMATION.
12	EXHAUST FAN TO BE INTERLOCKED WITH THE OPERATION OF THE DISHWASHER. REFER TO EXHAUST FAN CURRENT SENSOR DETAIL 2/E101. EC TO COORDINATE REQUIREMENTS WITH MECHANICAL CONTRACTOR AND EQUIPMENT MANUFACTURER FOR A COMPLETE AND OPERABLE SYSTEM.
13	EXHAUST FAN SHALL BE CONTROLLED VIA EMS SYSTEM TO RUN ONLY WHEN THE PASTA COOKER IS ENERGIZED. CIRCUIT SHALL BE ROUTED THROUGH CONTACTOR IN LIGHTING CONTROL PANEL.
14	EC TO RUN 2-WIRE OUTDOOR RATED SHIELDED TWISTED PAIR FROM PRIMARY HOOD PANEL TO FAN FOR SPEED CONTROL. REFER TO HOOD WIRING DIAGRAMS ON E602-E603 FOR ADDITIONAL INFORMATION.

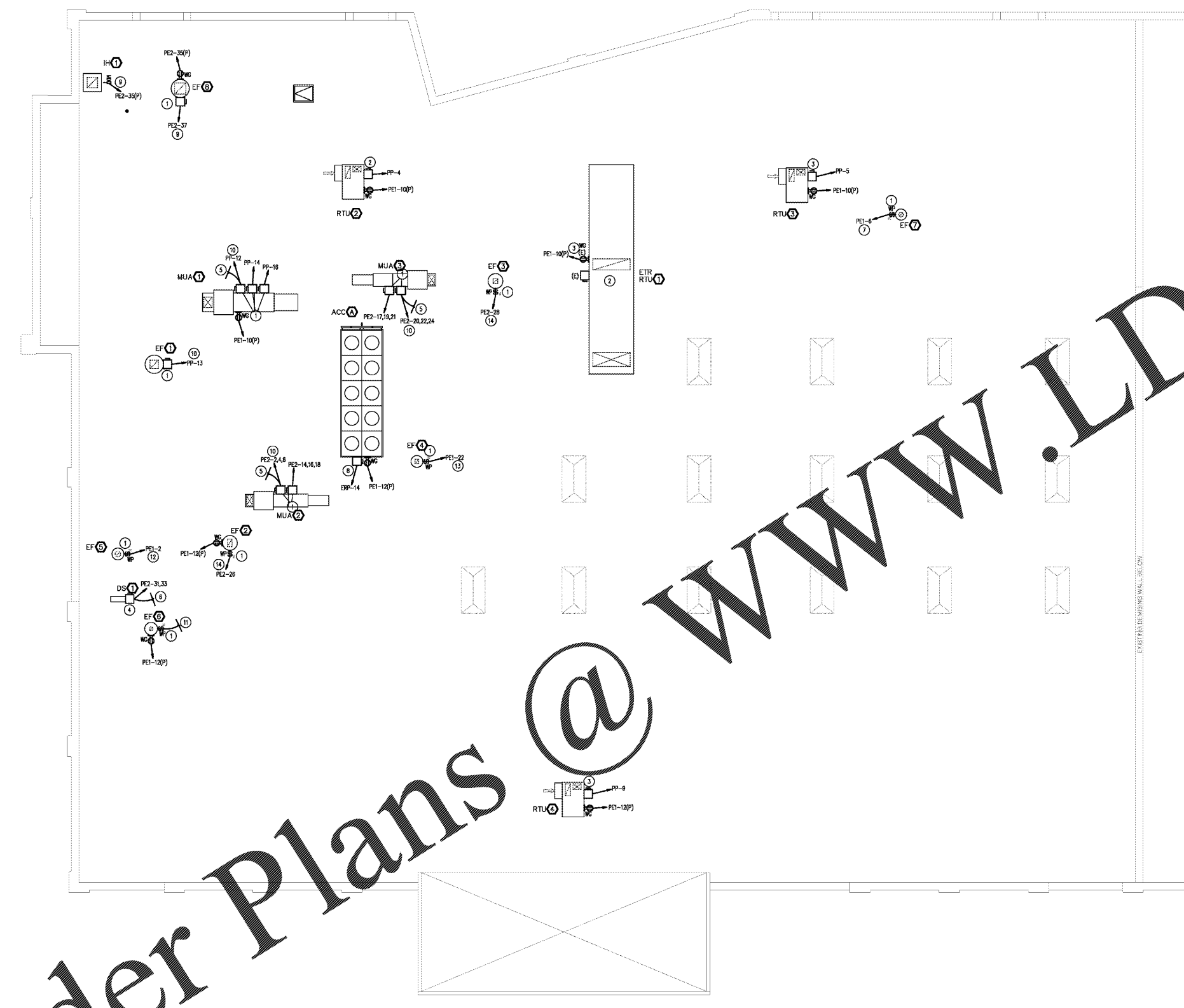
Lucky's Market

LUCKY'S MARKET
 6420 NAPLES BLVD.
 NAPLES, FLA. 34108

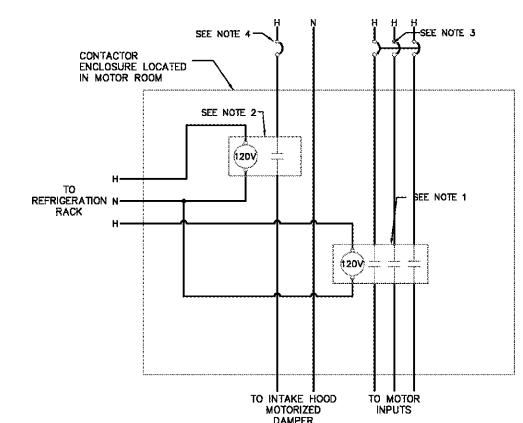


REVISIONS

PERMIT ISSUE
 APRIL 27, 2019
 BID ISSUE 04/27/19
 STORE NUMBER
 57
 WD PROJECT NUMBER
 LKYUF0011



1 ROOF POWER PLAN
 E104 1/8" = 1'-0"



- NOTES:
- SINGLE SPEED STARTER WITH THREE CR123+ HEATERS INSTALLED FOR OVERLOAD PROTECTION. HEATERS TO BE SIZED PER AMPERAGE OF FAN. VERIFY AMPERAGES WITH HOOD MANUFACTURER.
 - MOTORIZED DAMPER CONTACTOR.
 - BREAKER IN PANEL FEEDING THE COMPRESSOR ROOM EXHAUST FAN. SEE PANEL SCHEDULE FOR EXACT CIRCUIT BREAKER.
 - BREAKER IN PANEL FEEDING THE COMPRESSOR ROOM MOTORIZED DAMPERS. SEE PANEL SCHEDULE FOR EXACT CIRCUIT BREAKER.

2 MOTOR ROOM EXHAUST FAN & MOTORIZED DAMPER CONNECTION
 E104 NOT TO SCALE

Order Plans @