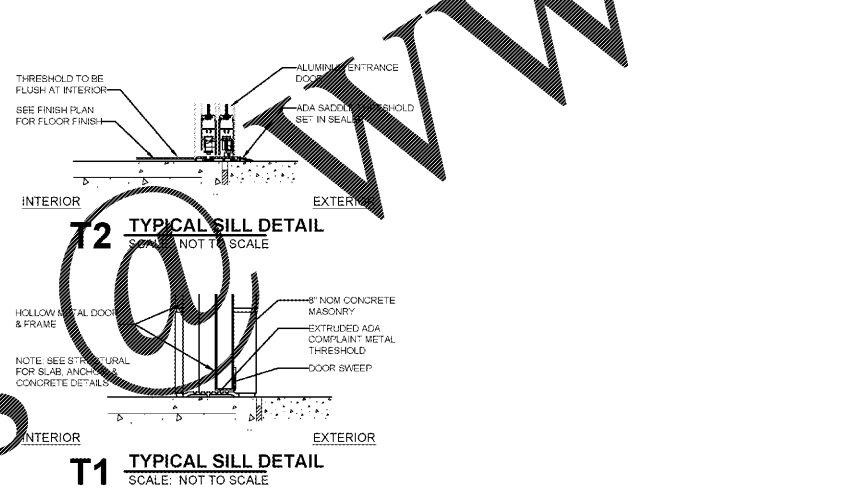
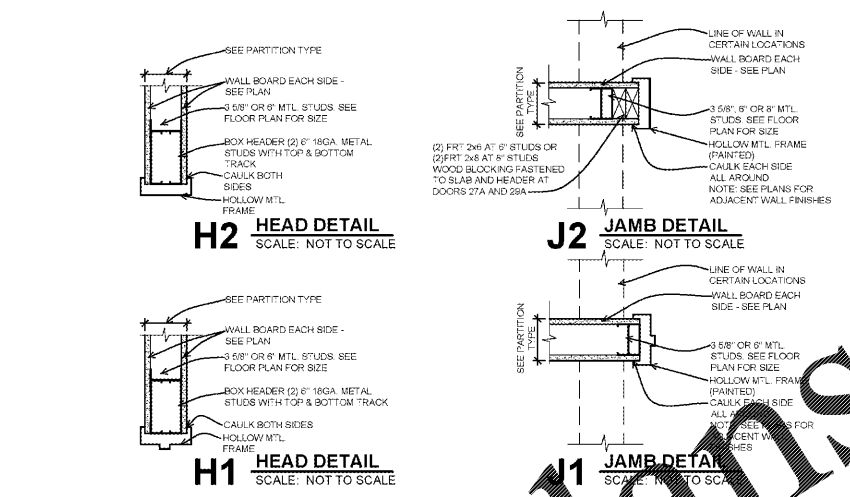


DOOR NO.	ROOM NAME	TYPE	SIZE (W x H)	W	H	MAT	FNISH	FRAME	GLASS	INSULATED	REMARKS	HARDWARE SET	NOTES
100a	ENTRY	J	EXIST	EXIST	EXIST	AL	CLAN	AL	YES	-	AUTO-OPERATING ENTRY DOOR	7	1, 3, 5, 7, 16
100b	ENTRY	J	EXIST	EXIST	EXIST	AL	CLAN	AL	YES	-	AUTO-OPERATING ENTRY DOOR	7	1, 3, 5, 7, 16
101	ENTRY	J	(2) 3'-0" x 7'-0"	1'-3/4"	AL	CLAN	AL	YES	-	-	AUTO-OPERATING ENTRY DOOR	7	1, 3, 7, 12
101a	SALES FLOOR	L	12'-0" x 12'-0"	-	-	AL	WHITE	AL	YES	-	FULLY GLAZED OVERHEAD DOOR	7	1, 12
102	SEATING AREA	J	EXIST	EXIST	EXIST	AL	CLAN	AL	YES	-	AUTO-OPERATING ENTRY DOOR	7	1, 3, 5, 7, 16
103	SALES FLOOR EXIT	A	3'-0" x 7'-0"	1'-3/4"	HM	PAINT	HM	YES	-	-	AUTO-OPERATING ENTRY DOOR	3	2, 3, 7, 9, 13
104	STORAGE	A	3'-0" x 7'-0"	1'-3/4"	HM	PAINT	HM	-	-	-	-	8	2, 10, 11
105	CASH	A	3'-0" x 7'-0"	1'-3/4"	HM	PAINT	HM	-	-	-	NO CLOSER THIS DOOR	1	2, 6
106	COMMUNITY ROOM	D	3'-0" x 7'-0"	1'-3/4"	HM	PAINT	HM	-	-	-	PROVIDE UNIT WITH SIDELITE	-	-
108	MEN'S RESTROOM	A	3'-0" x 7'-0"	1'-3/4"	HM	PAINT	HM	-	-	-	-	0	2, 4, 6, 16
109	WOMEN'S RESTROOM	A	3'-0" x 7'-0"	1'-3/4"	HM	PAINT	HM	-	-	-	-	0	2, 4, 6, 16
111	BACKROOM	C	(2) 3'-0" x 7'-0"	1'-3/4"	HM	PAINT	HM	-	-	-	-	2	-
112	MEAT PREP	C	(2) 2'-8" x 7'-0"	1'-3/4"	HM	PAINT	HM	-	-	-	-	7	-
113	BAKERY PREP	C	(2) 2'-8" x 7'-0"	1'-3/4"	HM	PAINT	HM	-	-	-	-	7	-
125	SCAN ROOM	A	3'-0" x 7'-0"	1'-3/4"	HM	PAINT	HM	-	-	-	-	1	2, 6
126	TEAM BREAK ROOM	B	3'-0" x 7'-0"	1'-3/4"	HM	PAINT	HM	-	-	-	-	1	2, 6, 16
127	DEPT. MANAGERS	B	3'-0" x 7'-0"	1'-3/4"	HM	PAINT	HM	-	-	-	-	1	2, 6
128	STORE DIRECTOR	A	3'-0" x 7'-0"	1'-3/4"	HM	PAINT	HM	-	-	-	-	1	2, 6
130	OFFICE MANAGER	A	3'-0" x 7'-0"	1'-3/4"	HM	PAINT	HM	-	-	-	-	1	2, 6
132a	RACK ROOM	A	EXIST	EXIST	EXIST	HM	PAINT	HM	-	-	-	12	2, 5, 8, 9, 10, 13, 15
132b	RACK ROOM / RECEIVING	A	(2) 3'-0" x 7'-0"	1'-3/4"	HM	PAINT	HM	-	-	-	-	9	2, 5, 10
133	ELECTRICAL ROOM	A	(2) 3'-0" x 7'-0"	1'-3/4"	HM	PAINT	HM	-	-	-	-	4	2, 5, 9, 11
134	RECEIVING	A	EXIST	EXIST	EXIST	HM	PAINT	HM	-	-	-	4	2, 5, 9, 11
134a	RECEIVING (COMPACTOR)	G	EXIST	EXIST	EXIST	HM	PAINT	HM	YES	-	-	5	2, 5, 9, 18
134b	RECEIVING	K	EXIST	EXIST	EXIST	HM	PAINT	HM	-	-	-	5	2, 5, 9, 18
135	STOCK ROOM	A	EXIST	EXIST	EXIST	HM	PAINT	HM	YES	-	-	6	2, 5, 8, 9, 10, 13, 16, 20
136	ROOF HATCH	-	-	-	-	-	-	-	-	-	-	-	-

**DOOR NOTES** GO TO COORDINATE ALL HARDWARE w/ LUCKY'S CONSTRUCTION REP.

- ALL GLASS IN DOORS TO BE TEMPERED GLASS, CLEAR ACRYLIC (WHERE SPECIFIED) OR LAMINATED GLASS AS APPROVED BY BUILDING INSPECTOR, TYPICAL.
  - FRAME AND PAINT HOLLOW METAL FRAMES, TYPICAL. SEE FINISH SCHEDULE FOR COLOR.
  - SIGN: PROVIDE ADA COMPLIANT SIGN AT THIS DOOR AND REFER TO SHEET 04 FOR SIGNS REQUIRED @ EXIT DOORS.
  - (SIGN FOR RESTROOMS) SHALL BE RAISED AND BRAILLE CHARACTERS AND PICTORIAL SYMBOL SIGNS. SIGNS SHALL BE INSTALLED ON THE WALL ADJACENT TO THE LATCH SIDE OF THE DOOR, WHERE THERE IS NO WALL SPACE TO THE LATCH SIDE OF THE DOOR, INCLUDING AT DOUBLE LEAF DOORS. SIGNS SHALL BE PLACED ON THE NEAREST ADJACENT WALL. MOUNTING HEIGHT SHALL BE 60 INCHES ABOVE THE FINISH FLOOR TO THE CENTERLINE OF THE SIGN. SEE ACCESSIBILITY NOTES FOR ADDITIONAL INFORMATION.
  - EXISTING DOOR: SEE NOTE ABOVE. RE-FURISH EXISTING HARDWARE OR INSTALL NEW HARDWARE AS SCHEDULED. ALL HARDWARE TO BE CLEANED AND FULLY FUNCTIONAL. \*LIKE NEW\* CONDITION COORDINATE ALL WORK WITH THE LUCKY'S CONSTRUCTION REP ON SITE.
  - USE WALL TYPE DOOR STOP.
  - INCLUDE THE FOLLOWING SIGN ON THESE DOORS: IN EMERGENCY PUSH TO OPEN. THIS DOOR MUST REMAIN UNLOCKED WHEN BUILDING IS OCCUPIED.
  - AT EXTERIOR DOORS: PAINT COLOR FOR DOOR & FRAME TO BE BLACK. INSIDE AND THE OUTSIDE AS SCHEDULED ON THE EXTERIOR ELEVATIONS OR TO MATCH BUILDING COLOR.
  - DOOR SHALL BE EQUIPPED w/ SELF CLOSURE HARDWARE.
  - S.S. KICK PLATE ON ONE (PUSH) SIDE ONLY.
  - USE FLOOR TYPE DOOR STOP.
  - COORDINATE UNIT WIDTH WITH EXISTING OPENING AND FINAL FRAMED OPENING CONDITIONS.
  - PROVIDE SIGN ON EXTERIOR FACE OF DOOR "EMERGENCY EXIT" DO NOT BLOCK.
  - PROVIDE CLEAR VINYL STRIP KIT: STANDARD 6" SMOOTH w/ 60% OVERLAP BY STRIP-CURTAIN.COM OR EQUIVALENT. CONFIRM OPENING SIZE.
  - VERIFY ROUGH OPENING WITH DOOR SHOP DRAWINGS (TYPICAL ALL FRAMES).
  - UNDERCUT DOOR "I".
  - NO EXTERIOR HARDWARE REQUIRED AT THIS DOOR.
  - THE GENERAL CONTRACTOR SHALL INSPECT ALL HARDWARE ON ALL EXISTING DOORS TO REMAIN. REPLACE ALL DAMAGED HARDWARE WITH NEW AS SCHEDULED FOR THE DOOR FUNCTION. REPLACE ALL WEATHER STRIPPING AND THRESHOLDS ON ALL EXTERIOR DOORS. ALL HARDWARE SHALL BE NEW OR "LIKE NEW" AND FULLY FUNCTIONAL UPON PROJECT COMPLETION.
  - DOOR TO HAVE VIEWER.
  - NO EXTERIOR HARDWARE ON IN-ACTIVE LEAF.
- NOTE: ALL LOCKSETS SHALL HAVE REMOVEABLE CORES AND BE COMPATIBLE WITH SCHLAGE SFC CORES.
- NOTE: ALL DOORS SHALL UTILIZE ADA COMPLIANT LEVER HARDWARE.
- NOTE: DOORS AND WINDOWS AT ALL WALK-IN COOLERS AND FREEZERS TO BE FURNISHED w/ THE WALK-IN BOX BY THE MANUFACTURER AND EQUIPPED w/ HARDWARE THAT IS EASILY OPERABLE FOR EGRESS FROM THE INSIDE.

**DOOR ELEVATIONS**  
SCALE: 3/8" = 1'-0"



**DOOR HARDWARE SETS**  
SCALE: as noted

Door Hardware Set No.	Description	Hardware
1	Door Hardware Set No. 1 (OFFICE DOOR)	3 - Hinges 1 - Exit Device 1 - Exterior Trim 1 - Closer 1 - Kick Plate 1 - Wall/Floor Stop
2	Door Hardware Set No. 2	3 - Hinges 1 - Passage Set 1 - Closer 2 - Kick Plates 1 - Wall/Floor Stop 3 - Silencers
3	Door Hardware Set No. 3 (EXIT DOOR)	3 - Hinges 1 - Exit Device NO EXTERIOR HARDWARE 1 - Cylinder 1 - Sweep 1 - Threshold 1 - Set - Weatherstrip
4	Door Hardware Set No. 4 (ELECTRICAL ROOMS)	3 - Hinges 1 - Exit Device 1 - Exterior Trim 1 - Closer 1 - Kick Plate 1 - Wall/Floor Stop
5	Door Hardware Set No. 5 (COMPACTOR DOOR)	3 - Hinges 1 - Pull 1 - Deadbolt 1 - Set - Weatherstrip
6	Door Hardware Set No. 6	6 - Hinges 1 - Exit Device 1 - Exterior Trim (Active Leaf Only) 1 - Pull (Interior side of In-Active Leaf) 1 - Cylinder 1 - Vowder 1 - Closer (Active Leaf) 1 - Sweep 1 - Threshold 1 - Set Weatherstrip 2 - Kick Plates 1 - Wall/Floor Stop 1 - Astragal Plate
7	Door Hardware Set No. 7	Hardware by Door Manufacturer
8	Door Hardware Set No. 8	3 - Hinges 1 - Silencer Set 1 - Closer 1 - Kick Plate 3 - Silencers
9	Door Hardware Set No. 9 (RACK ROOM)	3 - Hinges 1 - Manual Flush Bolt (In-Active Leaf) 1 - Exit Device (Active Leaf) 1 - Exterior Trim 1 - Cylinder 1 - Sweep (Active Leaf)
10	Door Hardware Set No. 10 (RESTROOMS)	3 - Hinges 1 - Push Plate 1 - Pull Plate 1 - Closer 2 - Kick Plates 1 - Wall/Floor Stop 3 - Silencers
11	Door Hardware Set No. 11	3 - Hinges 1 - Exit Device 1 - Lock/Latch 1 - Closer 1 - Kick Plate 3 - Silencers
12	Door Hardware Set No. 12 (EXIT/ENTRY DOOR)	3 - Hinges 1 - Exit Device Precision - FL 2303 x 630 (w/ NO Alarm) 0 - Exterior Trim 1 - Cylinder 1 - Sweep 1 - Threshold 1 - Set - Weatherstrip
13	Door Hardware Set No. 13	3 - Hinges 1 - Lock/Latch Set 1 - Closer 1 - Kick Plate 3 - Silencers



LUCKY'S MARKET  
PROMENADE at NAPLES  
6424 NAPLES BLVD.  
NAPLES, FL 34109

REVIEWS

NO.	REVISION
1	
2	
3	
4	
5	
6	
7	
8	
9	
10	
11	
12	
13	
14	
15	
16	
17	
18	
19	
20	

PERMIT ISSUE  
MAY 7, 2018  
BIO ISSUE 05/07/18  
STORE NUMBER  
57

WD PROJECT NUMBER  
LKYU0011

A6.1 DOOR SCHEDULE AND DETAILS