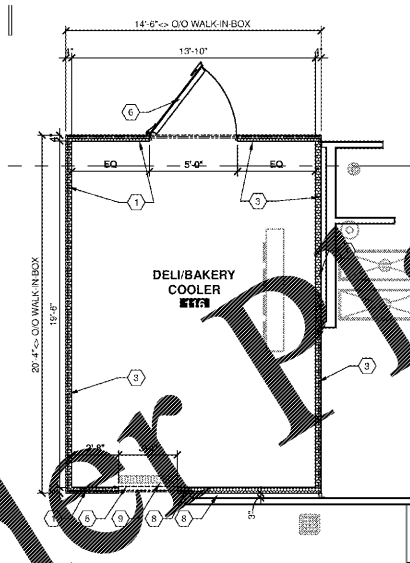
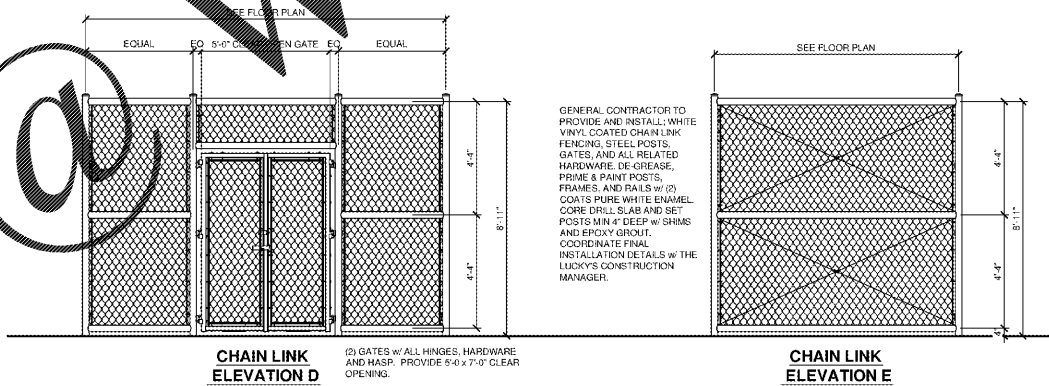


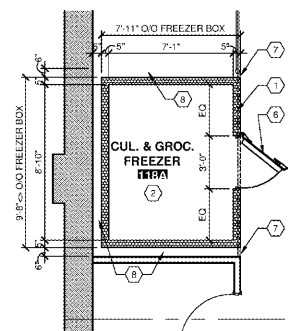
02 COOLER & FREEZER FLOOR PLAN
SCALE: 1/4" = 1'-0"



01 DELI COOLER FLOOR PLAN
SCALE: 1/4" = 1'-0"



03 INTERIOR ROOM ELEVATIONS
SCALE: 3/8" = 1'-0"



04 CULINARY FREEZER FLOOR PLAN
SCALE: 1/4" = 1'-0"

GENERAL NOTES

- A. COOLER WALLS ARE PREFABRICATED COOLER PANELS BY COOLER MANUFACTURER. CONTRACTOR TO CONFIRM EXACT DIMENSIONS WITH COOLER SUPPLIER. COOLERS AND FREEZERS SHALL BE INSTALLED PER COOLER MANUFACTURER'S STANDARD DETAILS. SEE RESPONSIBILITY SCHEDULE FOR SCOPE OF WORK.
- B. COOLER AND FREEZER BOXES SHALL BE FURNISHED AND INSTALLED BY LUCKY'S MARKET. CLOSE OFFS, FLASHING AND CLOSURE STRIPS SHALL BE FURNISHED AND INSTALLED BY THE WALK-IN BOX CONTRACTOR. FINISH ALL CLOSE OFF BETWEEN COOLER/FREEZER BOX AND ADJACENT WALL TO MATCH WALK-IN BOX. G.C. TO PROVIDE AND INSTALL SCREEN BETWEEN THE TOP OF WALK-IN FREEZER/COOLERS AND ADJACENT WALLS. SEE MECHANICAL, ELECTRICAL AND REFRIGERATION DRAWINGS FOR ADDITIONAL WORK TO BE INCLUDED IN BID.
- C. ALL DIMENSIONS ARE TAKEN FROM FACE OF EXISTING GYPSUM BOARD AT FURRED EXTERIOR WALLS OR CENTERLINE OF EXISTING COLUMNS, UNLESS NOTED OTHERWISE.
- D. FIELD VERIFY ALL DIMENSIONS.
- E. CONTRACTOR TO ENSURE WORK IS COMPLETED TO BE ACCEPTABLE FOR NEW COOLER PANEL INSTALLATION. NOTIFY ARCHITECT OF ANY DISCREPANCIES IMMEDIATELY.
- F. PROVIDE THE FOLLOWING CLEARANCES: 3" MIN. CLEARANCE BETWEEN COOLER PANEL AND EXTERIOR AND/OR STUD WALLS, 6" MIN. CLEARANCE BETWEEN FREEZER WALL PANEL AND EXTERIOR AND/OR STUD WALLS, 3" MIN. CLEARANCE BETWEEN REFRIGERATED CASES AND EXTERIOR AND/OR STUD WALLS.
- G. PROVIDE PROTECTION FOR EXPOSED REFRIGERATION PIPING. PROVIDE CONDENSATE PIPING LOCATED OUTSIDE OF COOLER/FREEZER. PROVIDE 1/2" PL WOOD BOX OUT (PAINTED TO 8" HEIGHT) AT LARGE AREAS. PROVIDE 1/2" PL STEEL ALUMINUM PLATE PIPE GUARD TO 4" HEIGHT AT LARGE AREAS (SEE FLOOR PLAN FOR SPECIFIC LOCATIONS). PROTECTION OF REFRIGERATION PIPING INSIDE COOLER/FREEZER SHALL BE BY REFRIGERATION CONTRACTOR.
- H. IF REQUIRED, GENERAL CONTRACTOR TO COORDINATE SPRINKLER HEAD LOCATIONS INSIDE COOLER/FREEZER BOXES TO AVOID PANICLED FLOOR STRUCTURE. WALL BRACING AND EXTERIOR WALLS DO NOT INSTALL SPRINKLER HEADS DIRECTLY IN FRONT OF THE AIR DAMS FROM FAN CO.

KEYED NOTES

- 1. WALK-IN WALL OF COOLER/FREEZER BOX. SEE DETAILS FOR ADDITIONAL INFORMATION. COORDINATE ACCEPTABLE MEANS OF SECURING METAL STUD TO TOP OF COOLER/FREEZER WITH COOLER SUPPLIER.
- 2. REINFORCED CONCRETE INSULATED FREEZER FLOOR TO BE CONSTRUCTED BY THE GENERAL CONTRACTOR. SEE DETAIL ON SLAB COORDINATION PLAN.
- 3. 4" INSULATED COOLER WALL, TYPICAL AT COOLERS.
- 4. 5" INSULATED FREEZER WALL, TYPICAL AT FREEZERS.
- 5. COOLER MANUFACTURE TO PROVIDE OPENING WITH CLEAR VINYL CURTAIN.
- 6. COOLER DOOR PROVIDED AND INSTALLED BY COOLER MANUFACTURER. ALL DOORS TO PROVIDE A MINIMUM CLEAR OPENING WIDTH OF 52".
- 7. COOLER CLOSURE AT WALL BY COOLER MANUFACTURER.
- 8. PROVIDE A MINIMUM AIR GAP OF 3" BETWEEN WALL SHEATHING AND COOLER BOX AND 6" MAXIMUM AIR GAP BETWEEN WALL AND FREEZER BOX.
- 9. FLOOR SINK OR TRENCH DRAIN. REFER TO PLUMBING DRAWINGS.
- 10. INSULATED WINDOW IN WALK-IN PROVIDED BY WALK-IN BOX MANUFACTURER.

NOTE:

INFORMATION SHOWN FOR GENERAL CONTRACTOR BID REFERENCE ONLY. THE WALK-IN REFRIGERATION BOX MANUFACTURER SHALL VERIFY AND COORDINATE ALL WALK-IN BOX SIZES WITH THE LUCKY'S MARKET CONSTRUCTION MANAGER AND PROVIDE FINAL SHOP DRAWINGS FOR REVIEW AND APPROVAL PRIOR TO INSTALLATION. THE GENERAL CONTRACTOR SHALL COORDINATE ALL WORK WITH THE FINAL APPROVED SHOP DRAWINGS.

ALL DIMENSIONS SHOWN ARE NOMINAL FOR REFERENCE PURPOSES. THE GENERAL CONTRACTOR SHALL FIELD COORDINATE ALL FINAL DIMENSIONS WITH THE WALK-IN MANUFACTURER SHOP DRAWINGS.

ALSO NOTE: THE WALK-IN BOX MANUFACTURER SHALL INCLUDE IN THEIR SHOP DRAWING / PERMIT SUBMITTAL ALL REQUIRED STAMPED ENGINEERING CALCULATIONS AND DESIGN DETAILS REQUIRED FOR APPROVAL. SPECIFICALLY, BUT NOT LIMITED TO, FLAME SPREAD INFORMATION AND STRUCTURAL ANCHORAGE OF WALL AND CEILING PANELS.

File R10631 Page 11-8 of 8 Issued: 2013-07-24

Test Record Summary:

The results of this investigation, including construction review and testing, indicate that the products evaluated comply with the applicable requirements in the Standard for Surface Burning Characteristics for Building Materials, (ASTM E 848), Test Section (dated September 13, 2010) and, therefore, such products are judged eligible to bear UL's Mark as described below and on the Conclusion Page of this Report.

Any information and documentation provided to you involving UL Mark services are provided on behalf of UL or any authorized licensee of UL.

Classification Marking:

The Surface Burning Characteristics as shown below in the Classification Marking represent the judgment of UL based upon the results of the examination and tests presented in this Report.

CLASSIFIED	Building Units Control No.	Surface Burning Characteristics
UL	34 to 536, Thick Painted or Unpainted Aluminum or Steel	UL Class 1
Flame Spread	20	15
Smoke Develop	450	Over 500

Test Record by:

Jason Fox-Smith

Engineering Associate
Fire Protection Division

Reviewed by:

James Smith

Staff Engineering Associate
Fire Protection Division

WALK-IN PANEL UL TEST ACCEPTANCE
SCALE: no scale

www.LDILLING.com
 LUCKY'S Market
 6424 NAPLES BLVD.
 NAPLES, FL 34109

Order Plans

REVISIONS
 PERMIT ISSUE
 MAY 7, 2018
 BID ISSUE 05/07/18
 STORE NUMBER
 57
 WD PROJECT NUMBER
 LKYUP0011
A4.2
 ENLARGED WALK-IN PLANS