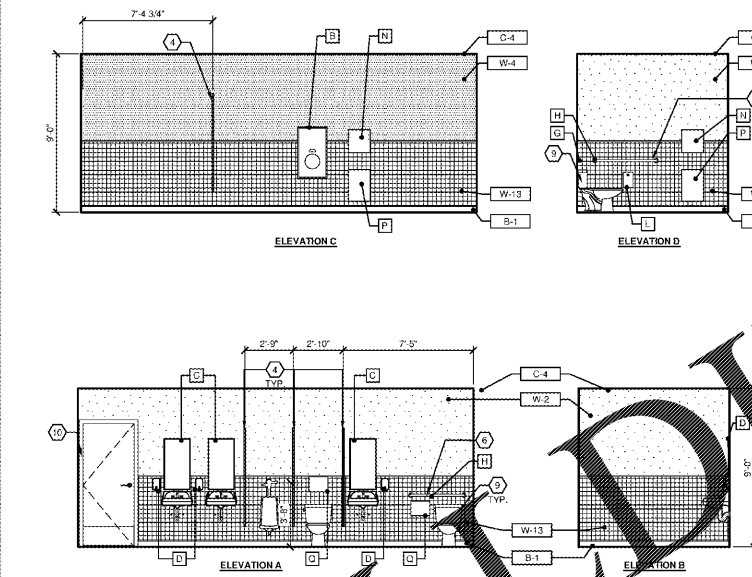
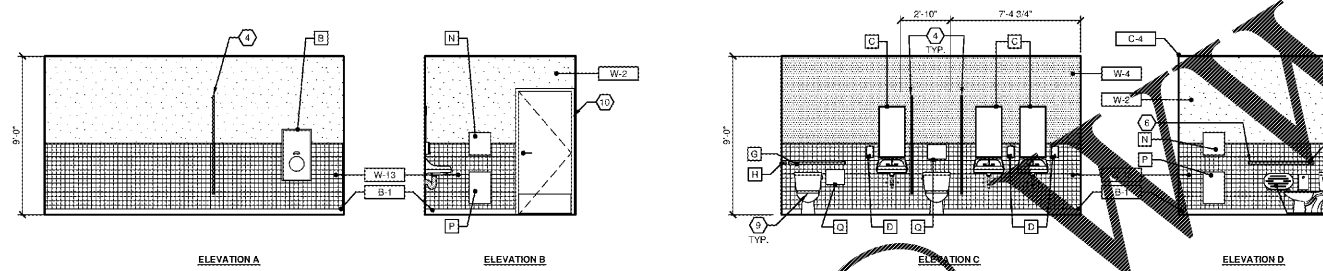


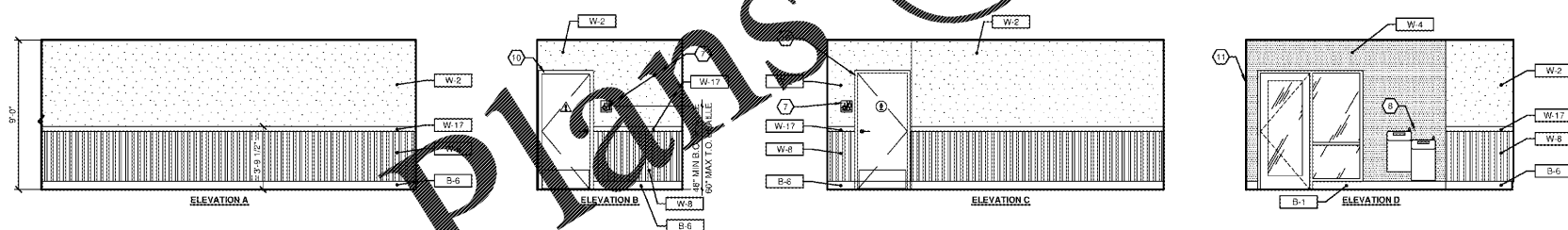
**01 ENLARGED RESTROOM/COMMUNITY PLAN**  
SCALE: 3/8" = 1'-0"



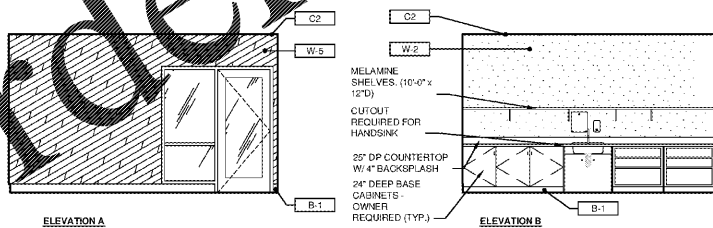
**02 MENS RESTROOM**  
SCALE: 1/4" = 1'-0"



**03 WOMENS RESTROOM**  
SCALE: 1/4" = 1'-0"



**04 RESTROOM HALL**  
SCALE: 1/4" = 1'-0"



**05 COMMUNITY ROOM ELEVATIONS**  
SCALE: 1/4" = 1'-0"

**GENERAL NOTES**

- A. LOCATE DOOR BUMPER ON WALL SO DOOR DOES NOT HIT OR DAMAGE ADJACENT ACCESSORIES OR TILE.
- B. FLUSH CONTROLS ON WATER CLOSETS IN ADA COMPLIANT STALLS SHALL BE MOUNTED TO THE OPEN SIDE, OPPOSITE FROM THE GRABBAR.
- C.C. SHALL COORDINATE DELIVERY OF OWNER SUPPLIED MATERIALS WITH SUPPLIER.
- D. G.C. SHALL PROVIDE WOOD BLOCKING FOR ALL TOILET ACCESSORIES, TYPICAL FOR MOUNTING AND ADEQUATE SUPPORT TO MEET CODE REQUIREMENTS.
- E. MAINTAIN MIN. 32" CLEAR OPENING ON SWING DOORS AT ACCESSIBLE STALLS.
- F. LOCATE COAT HOOK ON DOOR OF SINGLE USE TOILETS SO THAT THE HOOK DOES NOT HIT OR DAMAGE OTHER TOILET ACCESSORIES OR PARTITIONS, 48" MAXIMUM MOUNTING HEIGHT TYPICAL.
- G. SOUND ATTENUATION BATTS AT ALL RESTROOM WALLS AND CEILINGS, TYPICAL.
- H. WRAP EXPOSED UNDER-COUNTER LAVATORY WASTE AND SUPPLY LINES WITH VINYL-FACED PADDING "HANDY-SHIELD" AS MANUFACTURED BY PLUMBER SPECIALTY PRODUCTS, OR EQUIVALENT.
- J. PROVIDE ADDITIONAL PULL ON INSIDE FACE OF ACCESSIBLE TOILET STALL DOOR.
- K. ADJUST TOILET PARTITION DOORS TO STAND OPEN 6" WHEN COMPARTMENT IS UNOCCUPIED.
- L. REFER TO SHEET A4.1.2 FOR FINISH SCHEDULES.
- M. INSTALL TOILET ACCESSORY UNITS IN ACCORDANCE WITH MANUFACTURER'S INSTALLATION INSTRUCTIONS. FASTENERS APPROPRIATE TO SUBSTRATE, AND RECOMMENDED BY MANUFACTURER. VERIFY INSTALLATION'S PLUMB AND LEVEL, FIRMLY ANCHORED IN LOCATIONS AND HEIGHTS INDICATED.
- N. CATALOG NUMBERS BASED ON BOBRICK, UN. EQUIVALENT ACCESSORIES FROM ANOTHER MANUFACTURER WILL BE ACCEPTED, SUBJECT TO OWNER APPROVAL. REFER TO LOCAL JURISDICTION REGARDING ALL ACCESSIBILITY CODES FOR BUILDING CONSTRUCTION FOR GRAB BAR LOCATIONS, TYP.
- P. GRAB BARS (NOT LESS THAN 10GA) ARE TO BE MOUNTED TO SUPPORT 275 POUNDS LOAD. AT GRAB ON METAL STUD WALLS, INSTALL SOLID BLOCKING ON WALLS BEHIND MOUNTING POINTS OF GRAB BARS AND BABY CHANGERS. CHAIR WALLS AND/OR SECURELY TO WALL.
- U. USE ONE PART MILDWE RESISTANT SILICONE SEALANT FOR SANITARY SILICONE. PERFORM CORPORATION, OR EQUIVALENT. USE COLOR MATCHING TOPS, BACKS, ASHES AND OTHER WET INTERIOR LOCATIONS.
- R. COORDINATE ACCESSIBILITY INSTALLATION WITH ALL OTHER WORK INCLUDING OTHER WORK TO AVOID INTERFERENCE. ASSURE OPERATOR INSTRUCTIONS, OPERATION, ADJUSTMENT, CLEANING AND SERVICING OF TOILET ACCESSORY ITEMS.
- S. ALL ALTERNATES MUST BE APPROVED BY THE GENERAL CONTRACTOR PRIOR TO PURCHASE AND INSTALLATION.

**KEYED NOTES**

1. 60" DIAMETER CLEAR SPACE FOR WHEEL CHAIR TURNING.
2. 30" x 48" CLEAR SPACE FOR WHEEL CHAIR ACCESS.
3. 48" x 60" MAXIMUM CLEAR SPACE IN FRONT OF TOILET.
4. SOLID BLOCKING TOILET PARTITION, FURNISHED AND INSTALLED BY GENERAL CONTRACTOR. REFER TO SPECIFICATIONS.
5. FLOOR DRAIN. REFER PLUMBING DRAWINGS FOR MORE INFORMATION.
6. ANCHOR GRAB BARS SECURELY TO WALL. PROVIDE SOLID WOOD BLOCKING IN STUD WALL FOR PROPER ATTACHMENT. SEE ACCESSIBILITY NOTES ON SHEET 003 FOR ADDITIONAL INFORMATION. SEE ACCESSIBLE MOUNTING HEIGHTS, THIS SHEET.
7. BARRIER FREE SIGNS PROVIDED AND INSTALLED BY GENERAL CONTRACTOR. SEE 004.
8. ACCESSIBLE H2O DRINKING FOUNTAIN - SEE 004 FOR MOUNTING HEIGHT INFORMATION.
9. INSTALL WATER CLOSET SO FLUSH ACTIVATOR IS ON OPEN SIDE OF WATER CLOSET.
10. DOOR AND FRAME - SEE FINISH SCHEDULE SHEET A4.1.2.
11. RIN WOOD TRIM W-17 FULL HEIGHT AT END OF WALL.
12. GENERAL CONTRACTOR TO PROVIDE AND INSTALL PLYWOOD BLOCKING/BACKING IN STUD WALL FOR WALL MOUNTED TELEVISION MONITOR. COORDINATE EXACT SIZE AND HEIGHT WITH THE LUCKY'S CONSTRUCTION MANAGER.

**TOILET ACCESSORIES SCHEDULE**

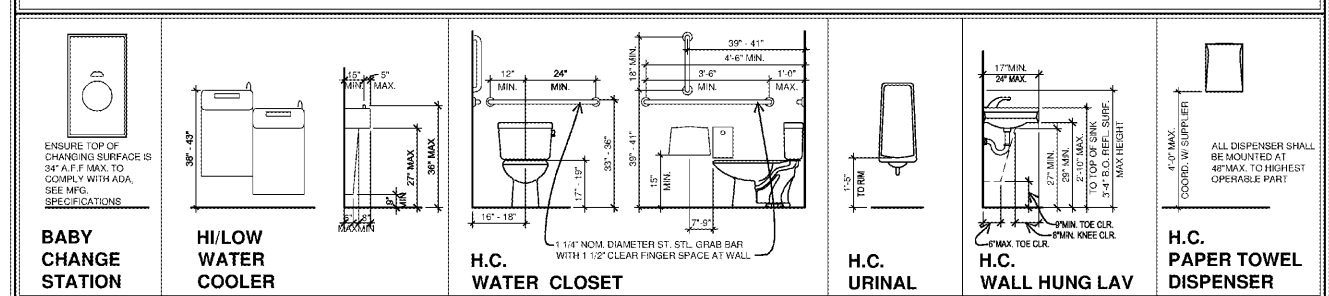
MARK	QUANTITY	DESCRIPTION	MODEL
A	4	ACCESSIBLE ROOM SIGNAGE ON WALL AND GEOMETRIC ROOM IDENTIFICATION SIGN ON DOOR	SEE INTERIOR SIGNAGE DETAILS AND SPECIFICATIONS ON SHEET 004
B	2	WALL MOUNTED BABY CHANGING STATIONS	SAFE STRAP VERTICAL MODEL, ADAAG COMPLIANT MOUNTING.
C	4	SURFACE MOUNTED CHANNEL FRAME MIRROR	BOBRICK B-165-1855.
D	4	SURFACE MOUNTED SOAP DISPENSER	
E	not used		
F	not used		
G	2	1 1/4" Ø SATIN FINISH SNAP-FLANGE GRAB BAR	BOBRICK B-5806-99 x 36"
H	2	1 1/4" Ø SATIN FINISH SNAP-FLANGE GRAB BAR	BOBRICK B-5806-99 x 42"
J	2	1 1/4" Ø SATIN FINISH SNAP-FLANGE GRAB BAR	BOBRICK B-5806-99 x 18"
K	4	SURFACE MOUNTED MULTI-ROLL TOILET TISSUE DISPENSER	
L	3	SURFACE MOUNTED SANITARY NAPKIN DISPOSAL	BOBRICK B-254
M	6	SURFACE MOUNTED COAT HOOK	48" AFF MAX.
N	4	SURFACE MOUNTED PAPER TOWEL DISPENSER	EMOTION 10" ROLL DISPENSER PROVIDED BY VENDOR
P	4	SURFACE MOUNTED WASTE RECEPTACLE	BOBRICK B-279 SATIN STAINLESS STEEL MOUNTED WITH TOP EDGE AT 28" AFF.
Q	4	SANITARY TOILET SEAT COVER DISPENSER	BOBRICK B-221

- NOTE: REFER TO THE SUPPLY/INSTALL SCHEDULE FOR RESPONSIBILITIES.
1. MOUNT PER MANUFACTURER'S INSTALLATION SPECIFICATIONS. GC TO PROVIDE & INSTALL SOLID IN WALL BLOCKING.
  2. OWNER SUPPLIED AND INSTALLED. SEE RESPONSIBILITY SCHEDULE FOR ADDITIONAL INFORMATION.
  3. GC SUPPLIED AND INSTALLED. INSTALL PER MANUFACTURER'S WRITTEN INSTALLATION SPECIFICATIONS.
  4. OWNER SUPPLIED AND INSTALLED BY GC.
- NOTE: THE RESTROOM ACCESSORIES SHOWN SHALL BE INSTALLED AS DIMENSIONED ON PLAN. THE GENERAL CONTRACTOR SHALL VERIFY PLACEMENT OF ALL ACCESSORIES AND PARTITIONS INCLUDING ITEMS INSTALLED BY LUCKY'S VENDORS AND CONTACT THE LUCKY'S CONSTRUCTION REP REGARDING ANY DISCREPANCIES.

NOTE: SEE ACCESSIBILITY NOTES ON SHEETS 004 AND ACCESSIBLE MOUNTING DETAILS ON THIS SHEET FOR ADDITIONAL ACCESSIBILITY REQUIREMENTS.

AS DESIGNED, IT IS THE INTENT OF THE PROPOSED PLAN TO BE IN FULL COMPLIANCE WITH THE REQUIREMENTS. THE GENERAL CONTRACTOR SHALL BE RESPONSIBLE FOR INSTALLATION OF ALL FIXTURES, PARTITIONS, AND ACCESSORIES AS SHOWN. THERE ARE TO BE NO ENCROACHMENTS INTO THE REQUIRED CLEAR FLOOR SPACES WITHIN THE PUBLIC RESTROOMS.

**ACCESSIBLE MOUNTING HEIGHTS**



wd  
DISCOVER BY BLVD  
LIN, OH 4  
8134 7000 T  
WDP BUSINESS.COM

**Lucky's Market**

LUCKY'S MARKET  
PROMENADE at NAPLES  
6424 NAPLES BLVD.  
NAPLES, FL 34109

REVISIONS

PERMIT ISSUE  
MAY 7, 2018  
BID ISSUE 05/07/18  
STORE NUMBER  
57

WD PROJECT NUMBER  
LKYU0011

**A4.0**

ENLARGED RESTROOM PLANS

Order Plans @