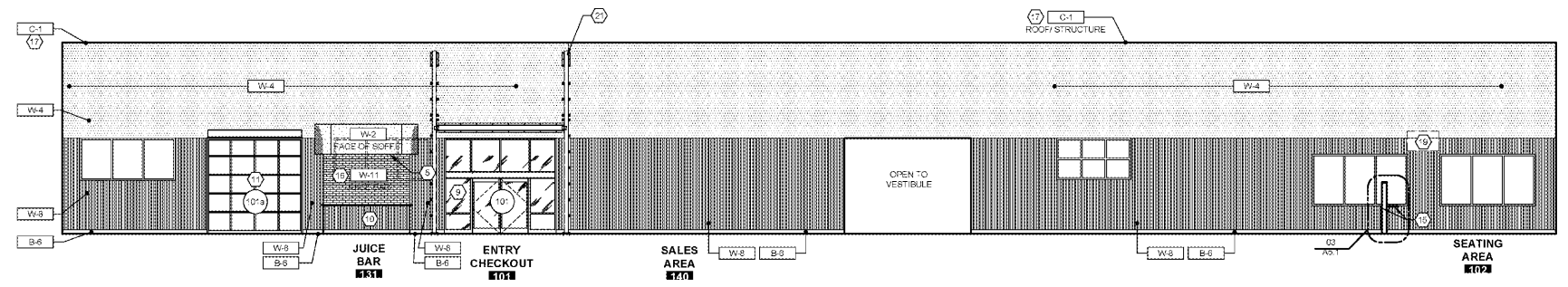
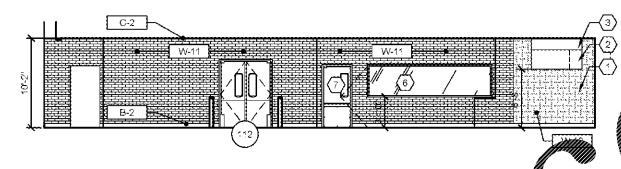


REVISIONS

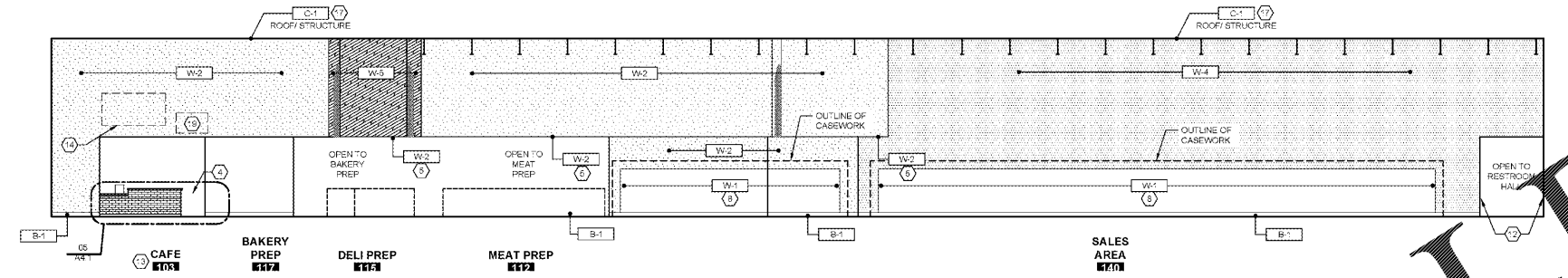
PERMIT ISSUE
 MAY 7, 2018
 BID ISSUE 06/07/18
 STORE NUMBER
 57
 WDP PROJECT NUMBER
 LKYUF0011



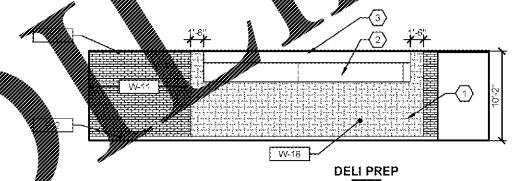
01 INTERIOR ELEVATION
 SCALE: 1/8" = 1'-0"



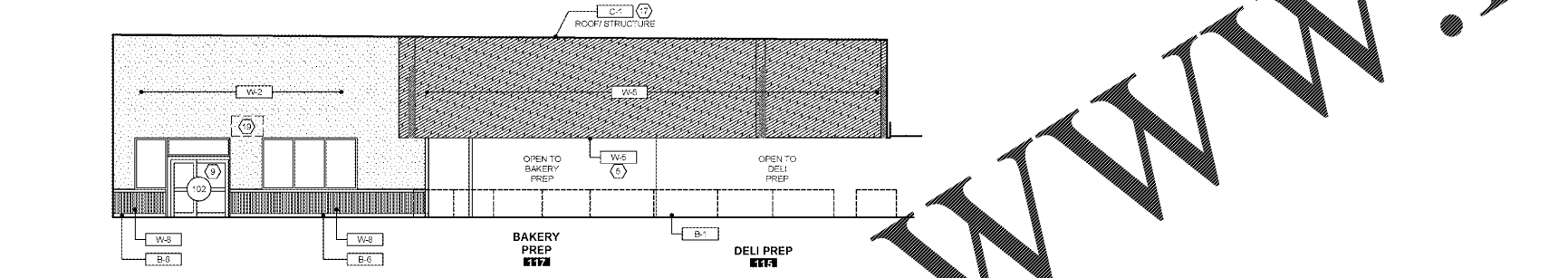
05 MEAT PREP ELEVATION
 SCALE: 1/8" = 1'-0"



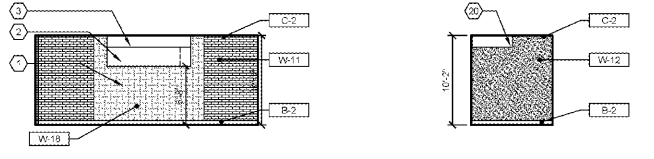
02 INTERIOR ELEVATION
 SCALE: 1/8" = 1'-0"



06 DELI PREP ELEVATION
 SCALE: 1/8" = 1'-0"

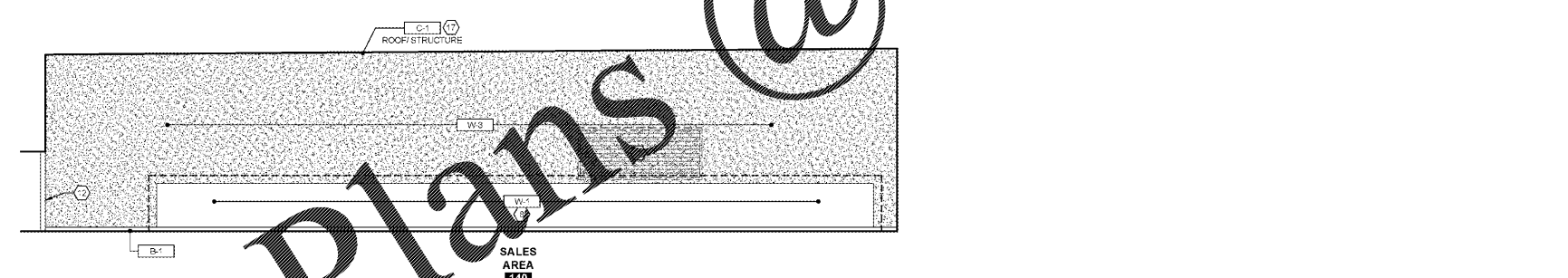


03 INTERIOR ELEVATION
 SCALE: 1/8" = 1'-0"



07 BAKERY PREP ELEVATION
 SCALE: 1/8" = 1'-0"

08 BAKERY PREP ELEVATION
 SCALE: 1/8" = 1'-0"



04 INTERIOR ELEVATION
 SCALE: 1/8" = 1'-0"

GENERAL NOTES

- A. PRIOR TO BEGINNING INTERIOR FINISH WORK, REVIEW AND VERIFY ALL INTERIOR FINISHES, MATERIALS AND COLORS WITH THE LUCKY'S CONSTRUCTION MANAGER.
- B. APPLICATION OF FINISHES OVER WALK-IN PANEL WALLS: FRP TO BE INSTALLED OVER 5/8" CDX PLYWOOD ATTACHED DIRECTLY TO WALL PANEL (GLUED & SCREWED). WHERE WALL FINISH IS CERAMIC TILE CONFIRM W/TILE INSTALLER IF IT IS SUITABLE TO ADHERE TILE DIRECTLY TO COOLER WALL. OTHERWISE, USE 1/2" THINSET OR 5/8" THICK SHIELD TILE BACKER. SCREW SUBSTRATE TO COOLER WALL FACE. NOTE: PROVIDE JOINTS IN WALL FINISH AT ALL COOLER PANEL JOINTS.
- C. SEE FLOOR PLAN, SHEET A-1.0 AND ROOM FINISH SCHEDULE SHEET A8.1.2 FOR ADDITIONAL WALL FINISH NOTES.
- D. INSTALL GYP BOARD CONTROL JOINTS (C.J.) AS PER INDUSTRY STANDARDS. COORDINATE FINAL LOCATIONS AS REQUIRED WITH CHANGES OF MATERIALS AND BUILDING STRUCTURE.
- E. SEE EXTERIOR ELEVATIONS AND WINDOW SCHEDULE FOR GLAZING TYPES AT PERIMETER WALLS.

KEYED NOTES

- 1. APPLY 18ga STAINLESS STEEL FINISH (W-18) WITHIN 18" OF ALL TYPE I HOODS. FULL HEIGHT AND WIDTH OF WALLS INCLUDING BEHIND HOOD, FROM TOP OF BASE TO 6" MIN ABOVE CEILING.
- 2. TYPE I EXHAUST HOOD - SEE MECHANICAL DRAWINGS FOR ADDITIONAL SPECIFICATIONS AND REQUIREMENTS.
- 3. GENERAL CONTRACTOR TO PROVIDE 8 S.S. SHROUD ABOVE HOOD TO EXTEND MINIMUM 4" ABOVE FINISHED CEILING.
- 4. SEE DETAIL 05A.4.1 FOR CAFE AREA BACK ELEVATION AND COUNTER FINISHES.
- 5. HEADER OR SOFFIT ABOVE: REFER TO REFLECTED CEILING PLAN.
- 6. WALK-IN MANUFACTURER TO PROVIDE WINDOW FRAME AND GLAZING.
- 7. DOOR AND HARDWARE PROVIDED BY WALK-IN MANUFACTURER.
- 8. GWB BEHIND ALL CASES AT SALES FLOOR WALL W-1 (PARTIALLY DISBANDED) UP TO 1'-0" BELOW TOP OF CASES. VERIFY LOCATION WITH LUCKY'S PROJECT MANAGER.
- 9. PROPOSED EXTERIOR DOORS: STORE FRONT FRAMING AND GLAZING PROVIDED AND INSTALLED BY LANDLORD IN SHELL PACKAGE.
- 10. JUICE BAR LOW WALL BY MILLWORK CONTRACTOR. G.C. TO INSTALL CORRUGATED METAL PANELS (W-8) ON PUBLIC SIDE OF WALL.
- 11. OVERHEAD DOOR - SEE DOOR SCHEDULE SHEET A8.1.
- 12. INSTALL 1X TRIM (W-7) FULL HEIGHT OF JAMB UP TO CEILING OR HEADER.
- 13. CHALK BOARD PAINT - COORDINATE FINAL AREA AND EXTENT WITH LUCKY'S CONSTRUCTION REP.
- 14. GENERAL CONTRACTOR TO INSTALL PLYWOOD BACKING IN STUD WALL FRAMING FOR MOUNTING OF INTERIOR GRAPHICS AND SIGNS. COORDINATE EXTENT AND EXACT LOCATIONS WITH LUCKY'S INTERIOR GRAPHIC PACKAGE.
- 15. CAFE SEATING LOW WALL - SEE DETAIL 03A.5.1.
- 16. INSTALL FRP (W-11) FULL HEIGHT OF JUICE BAR BACK WALL.
- 17. ALL EXPOSED ROOF DECK AND STRUCTURE TO BE FINISHED PER ROOM FINISH SCHEDULE SHEET A8.1.2.
- 18. LOCATION OF W-17 WOOD TRIM PANEL, ON WALL - VERIFY EXACT SIZE WITH LUCKY'S FIELD REP. G.C. TO PROVIDE UN-STRUT AND ALL-THREAD REQUIRED FOR INSTALLATION.
- 19. APPROXIMATE LOCATION OF TELEVISION MOUNTED ON WALL ABOVE CAFE. GC TO PROVIDE ADDITIONAL BLOCKING FOR SUPPORT.
- 20. BAKERY OVEN HOOD.
- 21. PRIME AND PAINT STRUCTURAL FRAME W-4 (PACIFIC PINES).

WALL FINISH LEGEND

W-1 CAFE AND PATCH GYP BOARD	W-5 PAINT STOLEN KISSES	W-11 FRP SUBWAY TILE
W-2 PAINT WHITE	W-6 PAINT CHALKBOARD	W-12 FRP PEBBLE FINISH
W-3 PAINT CHOCOLATE FROTH	W-7 WOOD TRIM PANEL	W-17 8G WOOD BEEFLEKILL
W-4 PAINT PACIFIC PINES	W-8 GALV. SIDING	W-18 18ga STAINLESS STEEL PANEL

SEE FINISH SCHEDULE ON SHEET A8.1.2 FOR ADDITIONAL INFORMATION

Order Plans @

File Path: \\p01nas01\p01\projects\060718\060718_011\planwork\3_pacific08\tablets\order_plans\interior_elevations.dwg Issue: 06/07/18 10:54 AM User: JLD