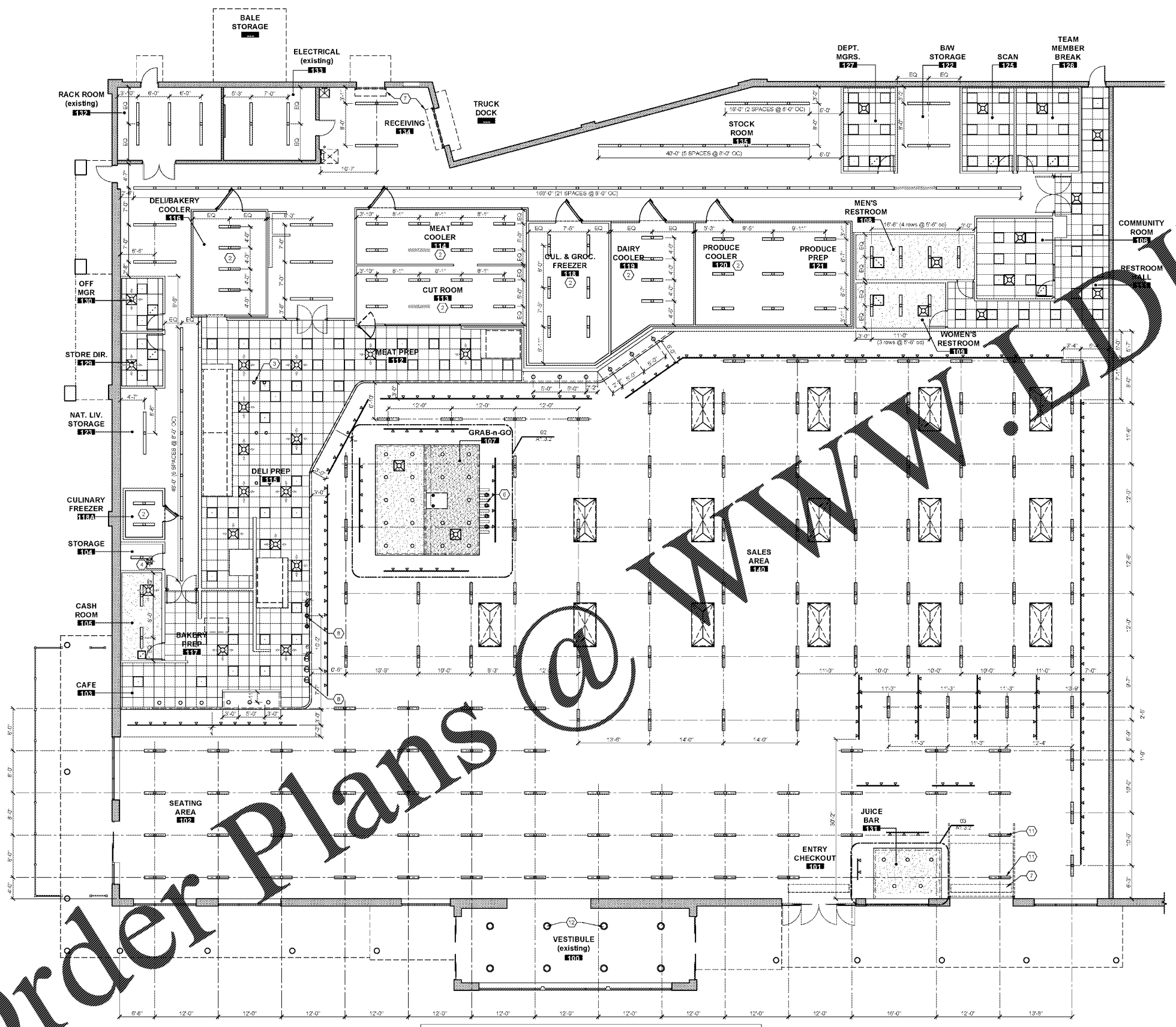


Order Plans



**01 DIMENSIONED LIGHTING PLAN**  
SCALE: 1/8" = 1'-0"

**CRITICAL NOTE:**  
THERE SHALL BE NO COMBUSTIBLE MATERIALS INSTALLED WITHIN 24" OF THE EXPOSED GREASE DUCT, INCLUDING BUT NOT LIMITED TO FRAMING OR BLOCKING, PLASTIC (COMBUSTIBLE) CONDUIT, DATA CABLING, WIRING ETC. GENERAL CONTRACTOR SHALL ENSURE ALL TRADES MAINTAIN MINIMUM INSTALLATION SEPARATION OF MATERIALS TO THE GREASE DUCTWORK FROM ALL TYPE I EXHAUST HOODS.

**NOTE:**  
GENERAL CONTRACTOR/ELECTRICAL CONTRACTOR SHALL ENSURE THAT ALL PUBLIC AREA LIGHT FIXTURES ARE SUSPENDED AND IN NEAT STRAIGHT ROWS AS SHOWN AND AT THE PROPER HEIGHT TO THE BOTTOM OF THE FIXTURES AS NOTED ON THE LIGHT FIXTURE SCHEDULE. SEE ELECTRICAL LIGHT PLAN FOR ADDITIONAL NOTES.

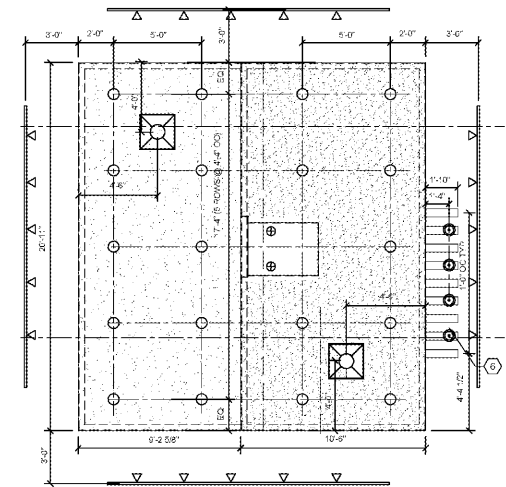
REFER TO ELECTRICAL DRAWINGS FOR FIXTURE DETAILS AND FIXTURE MOUNTING HEIGHTS.

**GENERAL NOTES**

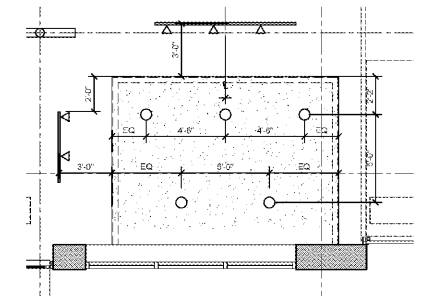
- A ALL LIGHTING IS PROVIDED BY THE OWNER AND INSTALLED BY THE C.C. UNLESS OTHERWISE NOTED. THIS DRAWING IS FOR THE PURPOSE OF COORDINATION. SEE ELECTRICAL DRAWINGS FOR ACTUAL DESCRIPTION AND LOCATION OF LIGHTING FIXTURES. LIGHT FIXTURE PLACEMENT IS ASSOCIATED WITH THE FIXTURE PLAN LAYOUT. COORDINATE FINAL LIGHTING LAYOUT WITH LUCKY'S MARKET.
- B PROVIDE UNISTRUT SUPPORTS AS REQUIRED TO SUPPORT SUSPENDED LIGHTING GRIDS, SUSPENDED CEILINGS, REFRIGERATION UNITS, ETC. PAINT ANY UNISTRUT OR SUPPORTS TO MATCH COLOR OF STRUCTURE ABOVE. CONNECTIONS AT BAR JOIST SHALL BE MADE AT PANEL POINTS. UNISTRUT SUPPORTS ARE TO BE MANUFACTURED BY UNISTRUT CORP. SUSPEND CEILINGS FROM EXISTING BAR JOISTS WHERE APPLICABLE.
- C ALL OVERHEAD STRUCTURE AND SYSTEMS EXPOSED TO THE SALES AREA SHALL BE PAINTED WHITE. INCLUDES BUT IS NOT LIMITED TO: ROOF DECK, STRUCTURE, PIPES, DUCTS, BRACING, SUPPLEMENTAL SUPPORTS & HANGERS, HARDWARE, CONDUITS AND COVER PLATES, ETC.
- D PENDANT LIGHT TO BE SUPPORTED FROM EXISTING ROOF STRUCTURE USING WHITE ELECTRICAL CORD SUPPORT WITH LIGHT'S PROVIDE WHITE CEILING CANOPY @ JUNCTION BOX.
- E SEE ELECTRICAL DRAWINGS FOR EMERGENCY LIGHTING AND EXIT LIGHTING LAYOUT AND INFORMATION.
- F ALL REQUIRED CHANGE OF DIRECTION OR TURNS REQUIRED FOR ALL EXPOSED OVERHEAD PIPE/CONDUIT/DUCTWORK, ETC. SHALL BE 90° NO 45° OR CROSS RUNS ALLOWED.
- G ALL OVERHEAD PIPES, CONDUITS, ETC. SHALL BE INSTALLED BEHIND SOFFIT WALLS IS AS POSSIBLE AND THOSE THAT ARE EXPOSED SHALL BE INSTALLED AS HIGH AS POSSIBLE THRU JOIST'S OPEN WEB. THE DUCTWORK SHALL BE INSTALLED AS HIGH AS POSSIBLE BELOW JOIST'S.
- H DIMENSIONS ARE FROM FACE OF FINISH TO FINISH AS SHOWN.

**KEYED NOTES**

- 1 EXIT LIGHT, REFER TO ELECTRICAL DRAWINGS.
- 2 WALK-IN BOX LIGHT FIXTURE PROVIDE LIGHT FIXTURE SCHEDULE. FINAL INSTALLATION BY ELECTRICAL CONTRACTOR. ELECTRICAL POWER CHANGES THROUGH CEILING TO TABLES BELOW. COORDINATE EXACT LOCATIONS IN THE FIELD WITH ELECTRICAL PLANS FOR ADDITIONAL NOTES.
- 3 CENTER FIXTURE IN ROOM.
- 4 SEE ELECTRICAL DRAWINGS FOR ADDITIONAL NOTES.
- 5 SEE ELECTRICAL DRAWINGS FOR ADDITIONAL NOTES.
- 6 DOWNROD LIGHTS SHALL BE MOUNTED ON WOOD TRIM (W-17) BRACKETS. SEE MILLWORK SCHEDULE FOR METAL SHEET A5.0.
- 7 AIR CURTAIN EXTERIOR DOOR, SEE MECHANICAL PLAN FOR ADDITIONAL NOTES.
- 8 RECURVATIVE HIGHLIGHTING SPECIALITY "ASK" LIGHT FIXTURE. COORDINATE EXACT LOCATION IN FIELD WITH MECHANICAL FIXTURE. VERIFY LOCATION WITH LUCKY'S CONSTRUCTION MANAGER PRIOR TO FINAL INSTALLATION.
- 9 EXTERIOR WALL MOUNTED SCENE LIGHTING - CENTER FIXTURE ON WALL SPACE. SEE LIGHTING PLAN FOR MOUNTING HEIGHT.
- 10 SUPPORT FIXTURE FROM UNISTRUT ATTACHED TO BOTTOM CHORD OF TRUSS.
- 11 COORDINATE IN FIELD - MOUNT LIGHT FIXTURE AT OVERHEAD DOOR TO BE 10" CLEAR ABOVE DOOR IN OPEN POSITION.
- 12 NEW LIGHT FIXTURE TO BE INSTALLED IN ENTRY VESTIBULE IN PLACE OF EXISTING. SEE ELECTRICAL LIGHTING PLAN FOR ADDITIONAL NOTES.



**02 GRAB-n-GO LIGHTING LAYOUT**  
SCALE: 1/4" = 1'-0"



**03 JUICE BAR LIGHTING LAYOUT**  
SCALE: 1/4" = 1'-0"

**Lucky's Market**

LUCKY'S MARKET  
PROMENADE at NAPLES  
6424 NAPLES BLVD.  
NAPLES, FL 34109

REVISIONS

ARCHITECTURAL LIGHTING PLAN

PERMIT ISSUE  
MAY 7, 2018  
BID ISSUE 05/07/18  
STORE NUMBER  
57  
WD PROJECT NUMBER  
LKYUF0011

**A1.3.2**

wd  
107 DISCOVERY BLVD  
COLUMBUS, OH 43240  
614.444.7000 T  
WWW.DRAWINGLINE.COM